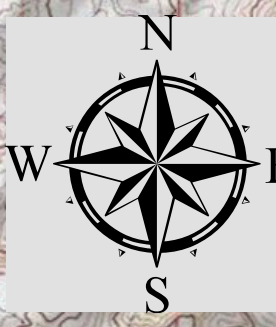
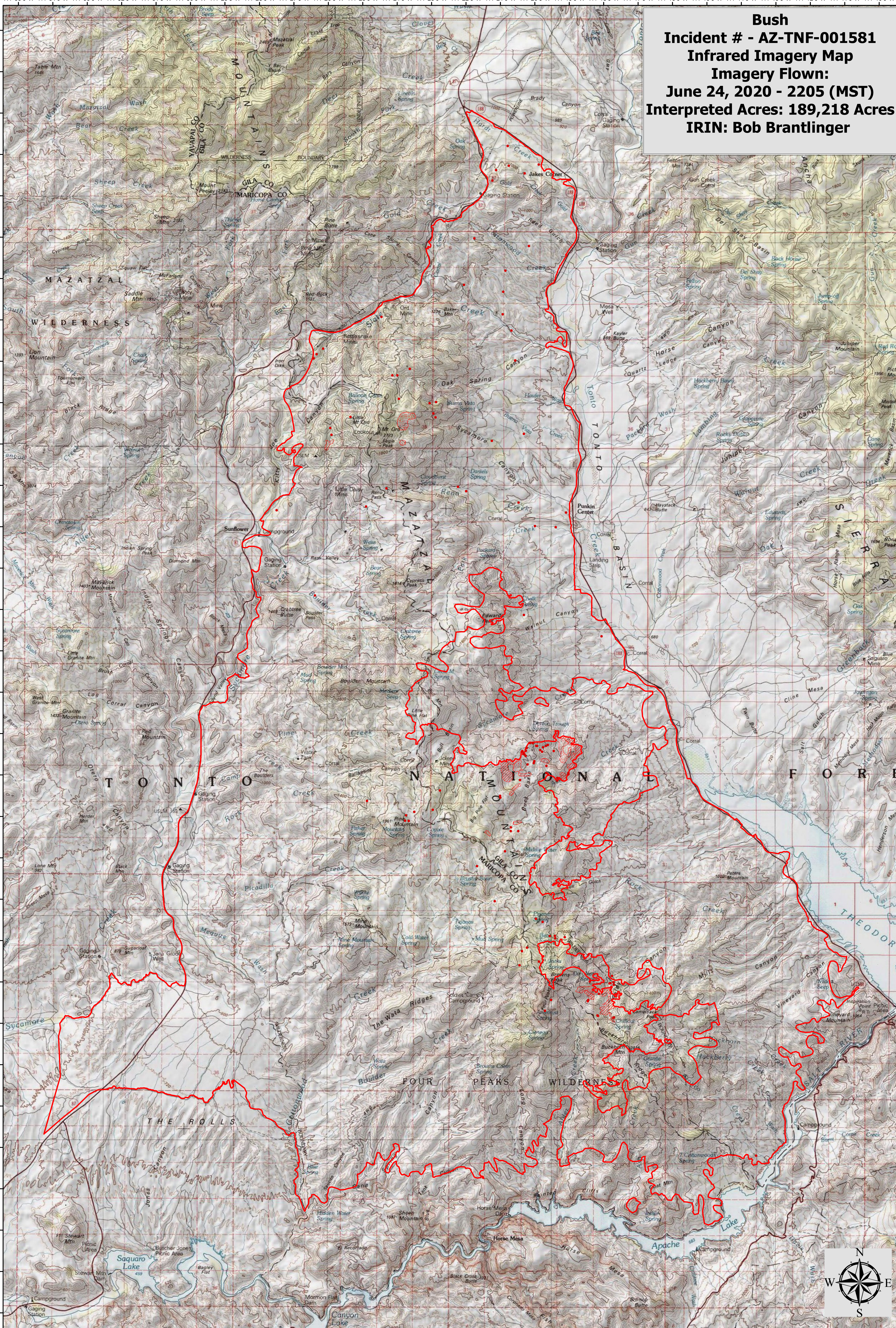


111°35'0"W 111°34'0"W 111°33'0"W 111°32'0"W 111°31'0"W 111°30'0"W 111°29'0"W 111°28'0"W 111°27'0"W 111°26'0"W 111°25'0"W 111°24'0"W 111°23'0"W 111°22'0"W 111°21'0"W 111°20'0"W 111°19'0"W 111°18'0"W 111°17'0"W 111°16'0"W 111°15'0"W 111°14'0"W 111°13'0"W 111°12'0"W 111°11'0"W 111°10'0"W

Bush
Incident # - AZ-TNF-001581
Infrared Imagery Map
Imagery Flown:
June 24, 2020 - 2205 (MST)
Interpreted Acres: 189,218 Acres
IRIN: Bob Brantlinger



Legend

- Heat Perimeter**
- Isolated Heat Source**
- Intense Heat**
- Scattered Heat Source**

0 1.25 2.5 5 7.5 10 Kilometers

0 1.25 2.5 5 7.5 10 Miles

