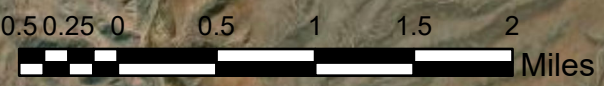
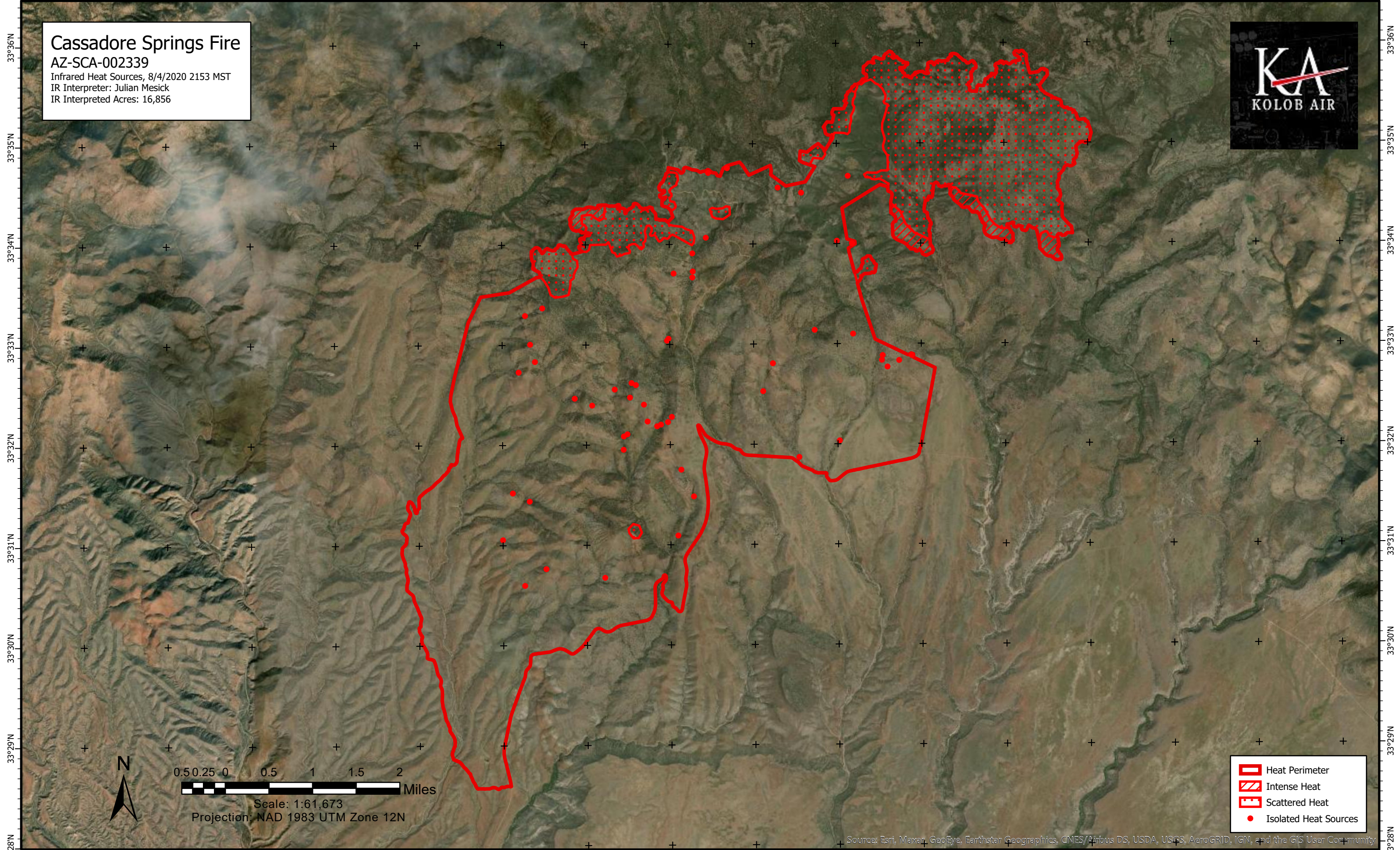
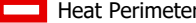





110°31'W 110°30'W 110°29'W 110°28'W 110°27'W 110°26'W 110°25'W 110°24'W 110°23'W 110°22'W 110°21'W 110°20'W 110°19'W 110°18'W 110°17'W 110°16'W

Cassadore Springs Fire
AZ-SCA-002339
Infrared Heat Sources, 8/4/2020 2153 MST
IR Interpreter: Julian Mesick
IR Interpreted Acres: 16,856



Scale: 1:61,673
Projection: NAD 1983 UTM Zone 12N

-  Heat Perimeter
-  Intense Heat
-  Scattered Heat
-  Isolated Heat Sources

Source: Esri, Maxar, GeoEye, Earthstar Geographics, CNES/Airbus DS, USDA, USGS, AeroGRID, IGN, and the GIS User Community

33°28'N 33°29'N 33°30'N 33°31'N 33°32'N 33°33'N 33°34'N 33°35'N 33°36'N