

109°15'W 109°14'W 109°13'W 109°12'W 109°11'W 109°10'W 109°9'W 109°8'W 109°7'W 109°6'W 109°5'W 109°4'W 109°3'W 109°2'W 109°1'W 109°W 108°59'W 108°58'W 108°57'W 108°56'W

33°38'N
33°37'N
33°36'N
33°35'N
33°34'N
33°33'N
33°32'N
33°31'N
33°30'N
33°29'N
33°28'N

33°38'N
33°37'N
33°36'N
33°35'N
33°34'N
33°33'N
33°32'N
33°31'N
33°30'N
33°29'N
33°28'N

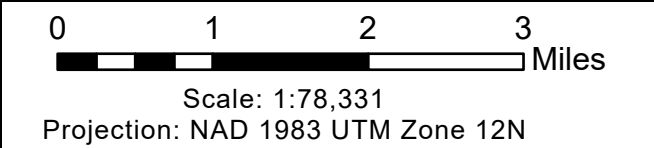
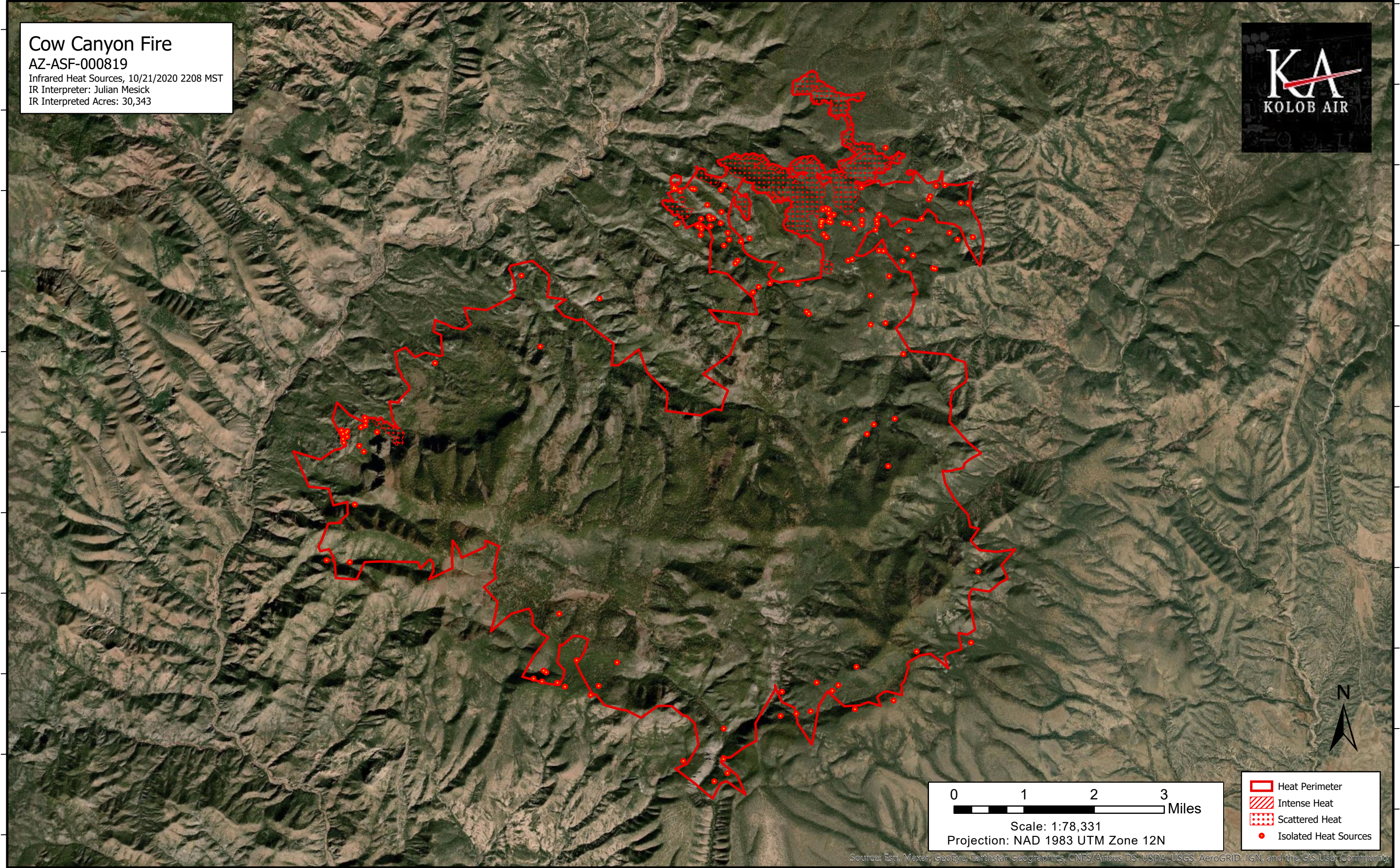
Cow Canyon Fire

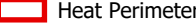



AZ-ASF-000819

Infrared Heat Sources, 10/21/2020 2208 MST

IR Interpreter: Julian Mesick

IR Interpreted Acres: 30,343



-  Heat Perimeter
-  Intense Heat
-  Scattered Heat
-  Isolated Heat Sources



Source: Esri, Maxar, GeoEye, Earthstar Geographics, CNES/Airbus DS, USDA, USGS, AeroGRID, IGN, and the GIS User Community