



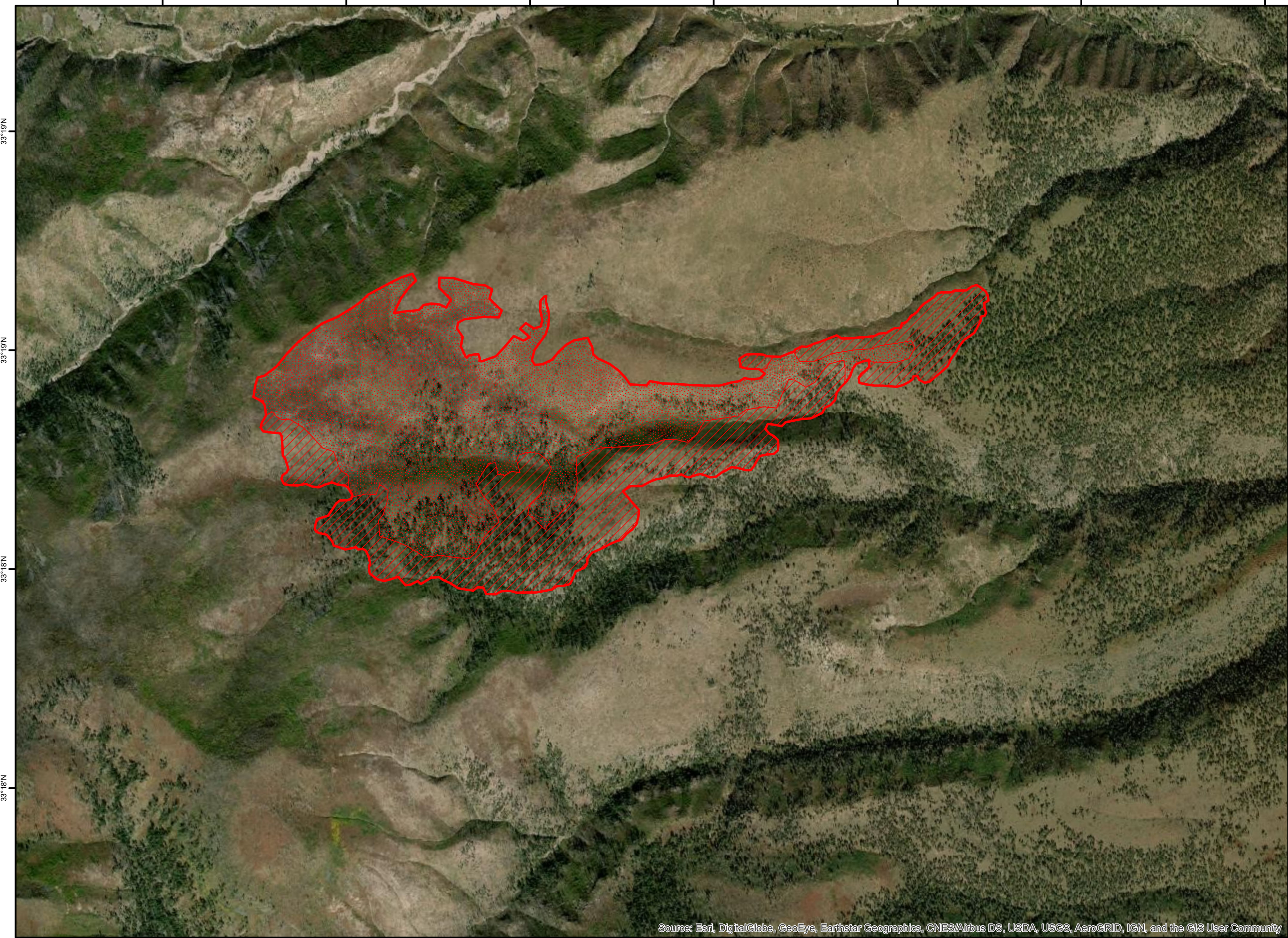


108°34'W 108°33'W 108°33'W 108°32'W 108°32'W 108°31'W 108°31'W

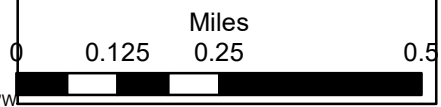
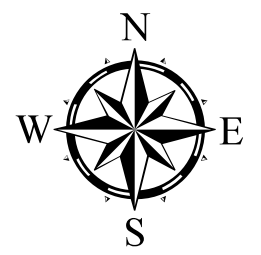
# Cub NM-GNF-0002XX Infrared Heat Sources 1:15,000



-  Heat Perimeter
  -  Intense Heat Areas
  -  Scattered Heat Areas
  -  Isolated Heat Sources
- NAD 1983 UTM Zone 12N



IR Interpreter: Brian Monroe  
IR interpreted acres: 484  
Date:7/01/2020  
Scan Date/Time: 6/30/20 2111 hrs



108°34'W 108°33'W 108°33'W 108°32'W 108°32'W 108°31'W 108°31'W

Source: Esri, DigitalGlobe, GeoEye, Earthstar Geographics, CNES/Airbus DS, USDA, USGS, AeroGRID, IGN, and the GIS User Community