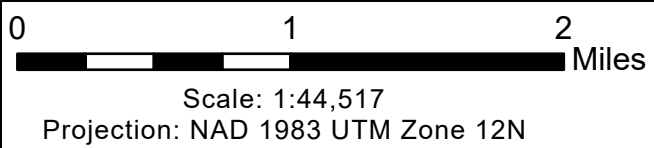
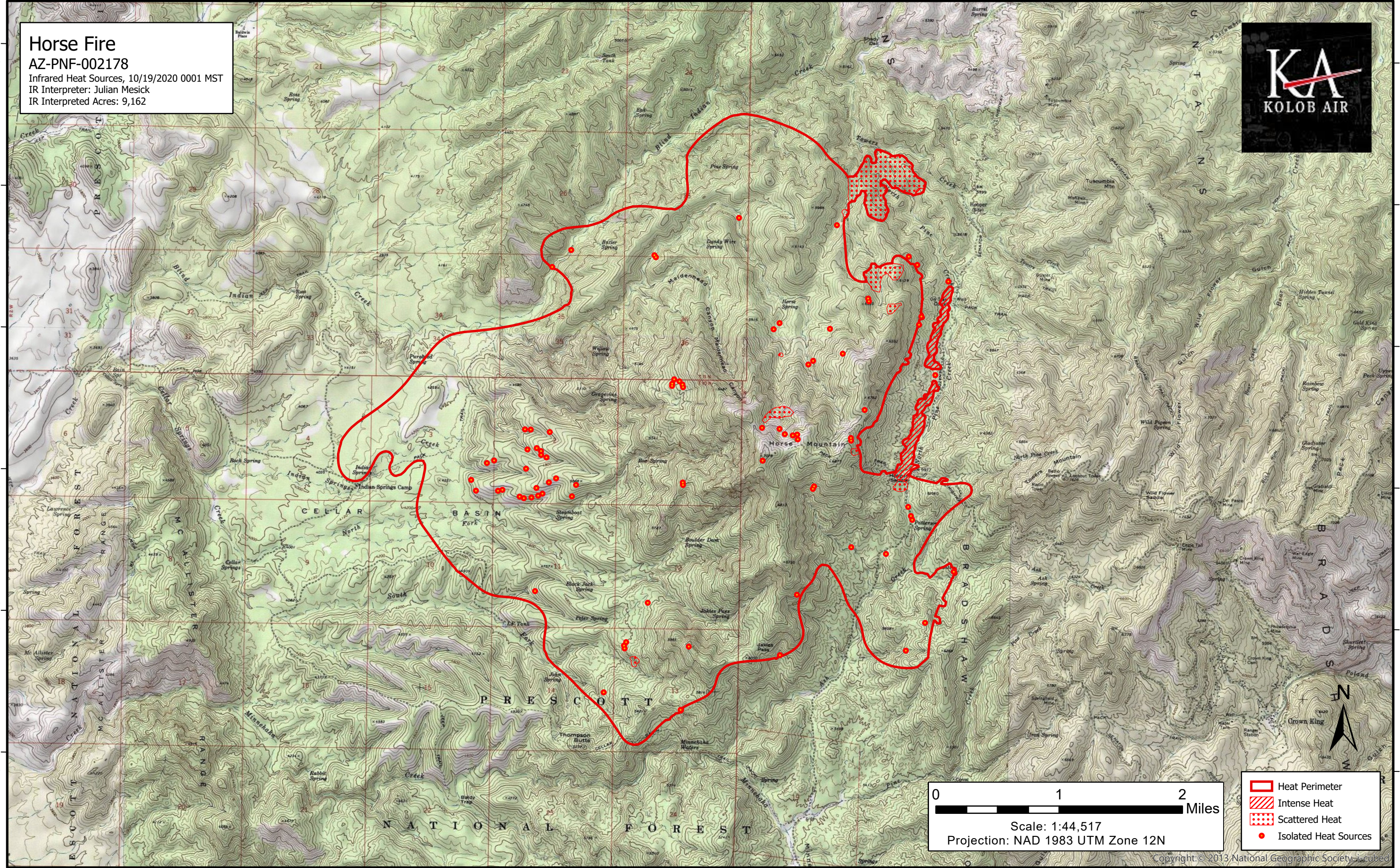


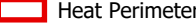



112°31'W 112°30'W 112°29'W 112°28'W 112°27'W 112°26'W 112°25'W 112°24'W 112°23'W 112°22'W 112°21'W 112°20'W

34°17'N  
34°16'N  
34°15'N  
34°14'N  
34°13'N  
34°12'N

34°17'N  
34°16'N  
34°15'N  
34°14'N  
34°13'N  
34°12'N

**Horse Fire**  
AZ-PNF-002178  
Infrared Heat Sources, 10/19/2020 0001 MST  
IR Interpreter: Julian Mesick  
IR Interpreted Acres: 9,162



-  Heat Perimeter
-  Intense Heat
-  Scattered Heat
-  Isolated Heat Sources



112°31'W 112°30'W 112°29'W 112°28'W 112°27'W 112°26'W 112°25'W 112°24'W 112°23'W 112°22'W 112°21'W 112°20'W