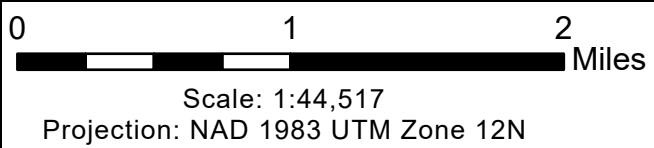
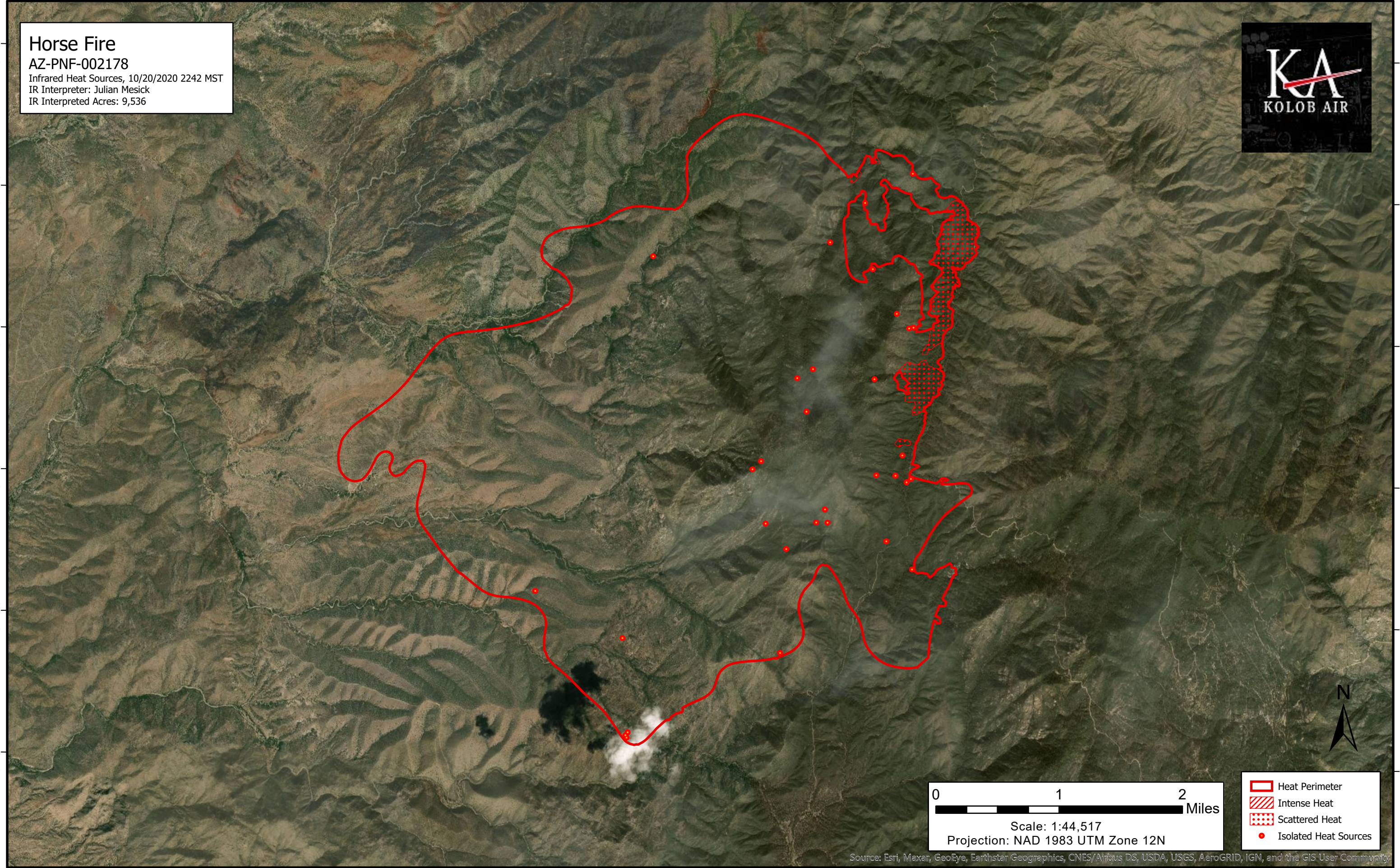


112°31'W 112°30'W 112°29'W 112°28'W 112°27'W 112°26'W 112°25'W 112°24'W 112°23'W 112°22'W 112°21'W 112°20'W

34°17'N  
34°16'N  
34°15'N  
34°14'N  
34°13'N  
34°12'N

34°17'N  
34°16'N  
34°15'N  
34°14'N  
34°13'N  
34°12'N

**Horse Fire**  
AZ-PNF-002178  
Infrared Heat Sources, 10/20/2020 2242 MST  
IR Interpreter: Julian Mesick  
IR Interpreted Acres: 9,536



- Heat Perimeter
- Intense Heat
- Scattered Heat
- Isolated Heat Sources



112°31'W 112°30'W 112°29'W 112°28'W 112°27'W 112°26'W 112°25'W 112°24'W 112°23'W 112°22'W 112°21'W 112°20'W

Source: Esri, Maxar, GeoEye, Earthstar Geographics, CNES/Airbus DS, USDA, USGS, AeroGRID, IGN, and the GIS User Community