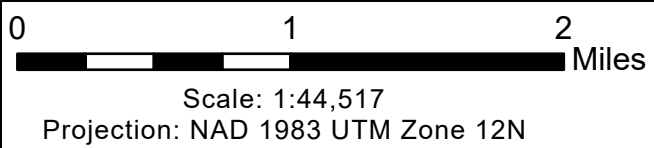
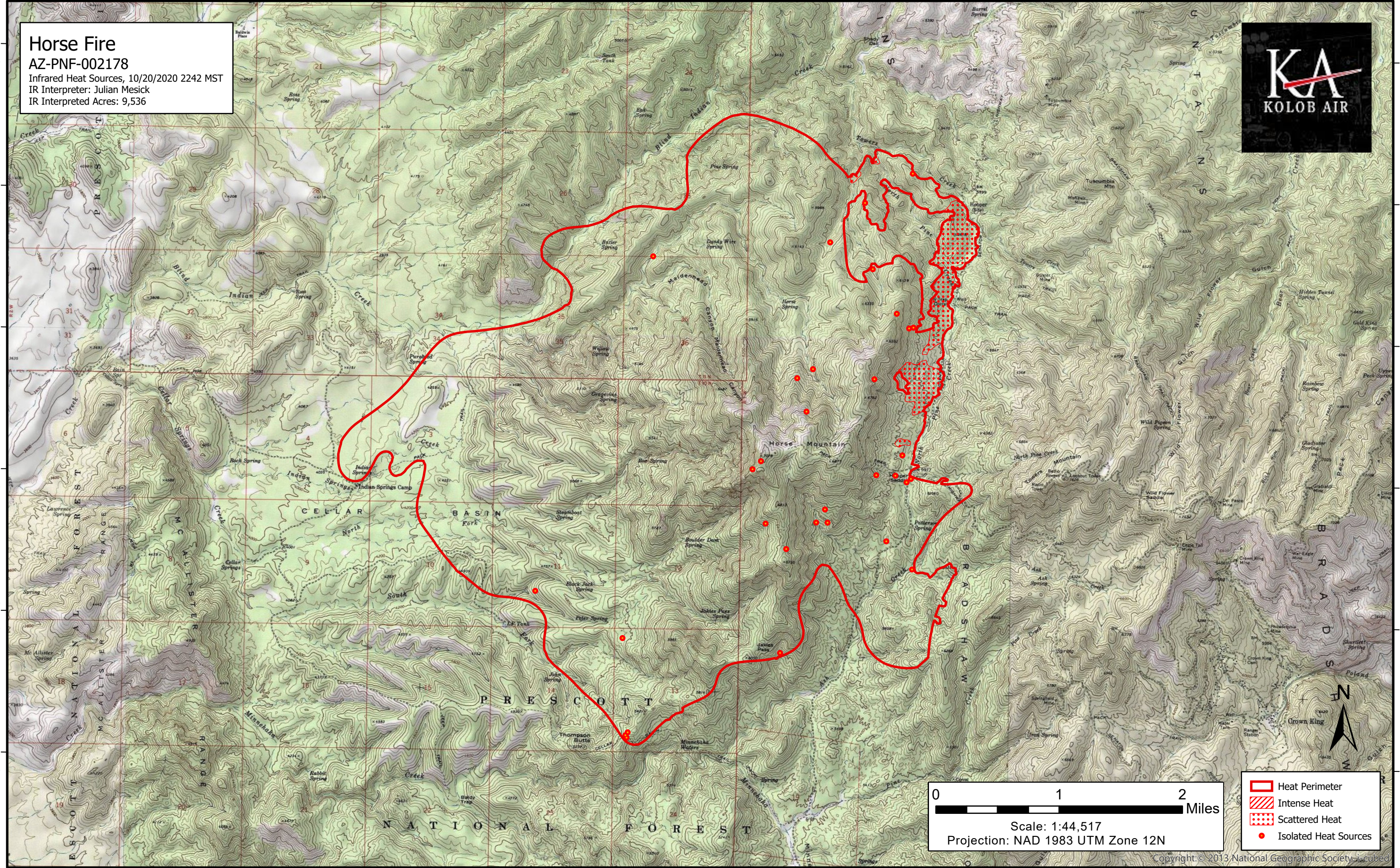


112°31'W 112°30'W 112°29'W 112°28'W 112°27'W 112°26'W 112°25'W 112°24'W 112°23'W 112°22'W 112°21'W 112°20'W

34°17'N
34°16'N
34°15'N
34°14'N
34°13'N
34°12'N

34°17'N
34°16'N
34°15'N
34°14'N
34°13'N
34°12'N

Horse Fire
AZ-PNF-002178
Infrared Heat Sources, 10/20/2020 2242 MST
IR Interpreter: Julian Mesick
IR Interpreted Acres: 9,536



- Heat Perimeter
- Intense Heat
- Scattered Heat
- Isolated Heat Sources



112°31'W 112°30'W 112°29'W 112°28'W 112°27'W 112°26'W 112°25'W 112°24'W 112°23'W 112°22'W 112°21'W 112°20'W