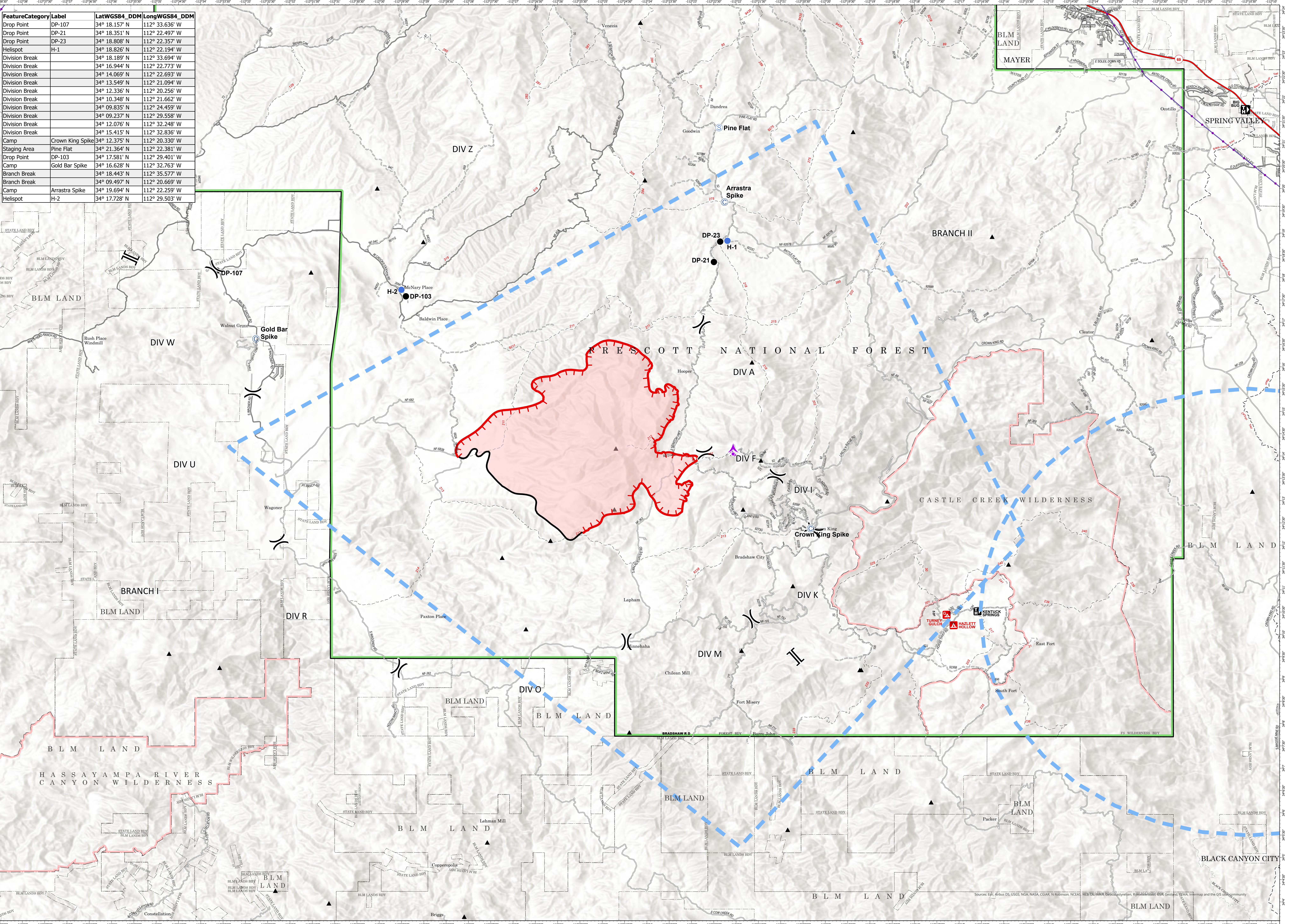
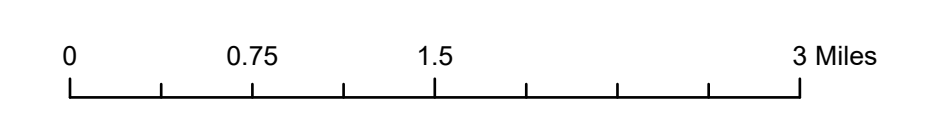


FeatureCategory	Label	LatWGS84_DDM	LongWGS84_DDM
Drop Point	DP-107	34° 18.157' N	112° 33.636' W
Drop Point	DP-21	34° 18.351' N	112° 22.497' W
Drop Point	DP-23	34° 18.808' N	112° 22.357' W
Helispot	H-1	34° 18.826' N	112° 22.194' W
Division Break		34° 18.189' N	112° 33.694' W
Division Break		34° 16.944' N	112° 22.773' W
Division Break		34° 14.069' N	112° 22.693' W
Division Break		34° 13.549' N	112° 21.094' W
Division Break		34° 12.336' N	112° 20.256' W
Division Break		34° 10.348' N	112° 21.662' W
Division Break		34° 09.835' N	112° 24.459' W
Division Break		34° 09.237' N	112° 29.558' W
Division Break		34° 12.076' N	112° 32.248' W
Division Break		34° 15.415' N	112° 32.836' W
Camp	Crown King Spike	34° 12.375' N	112° 20.330' W
Staging Area	Pine Flat	34° 21.364' N	112° 22.381' W
Drop Point	DP-103	34° 17.581' N	112° 29.401' W
Camp	Gold Bar Spike	34° 16.628' N	112° 32.763' W
Branch Break		34° 18.443' N	112° 35.577' W
Branch Break		34° 09.497' N	112° 20.669' W
Camp	Arrastra Spike	34° 19.694' N	112° 22.259' W
Helispot	H-2	34° 17.728' N	112° 29.503' W



Air Operations

Horse
 AZ-PNF-002178
 10/19/2020
 8,965 acres at 10/17/2020 2207



- Camp
- Staging Area
- ▲ Aerial Hazard
- Temporary Flight Restriction
- Drop Point
- Helispot
-) Division Break
- | Branch Break
- Uncontrolled Fire Edge
- Contained Line
- Transmission Lines
- Wildfire Daily Fire Perimeter



Southwest IMT 2
 10/18/2020 1929

North American 1983 Datum. Lat Long Grid
 Name: Map Frame



Maps