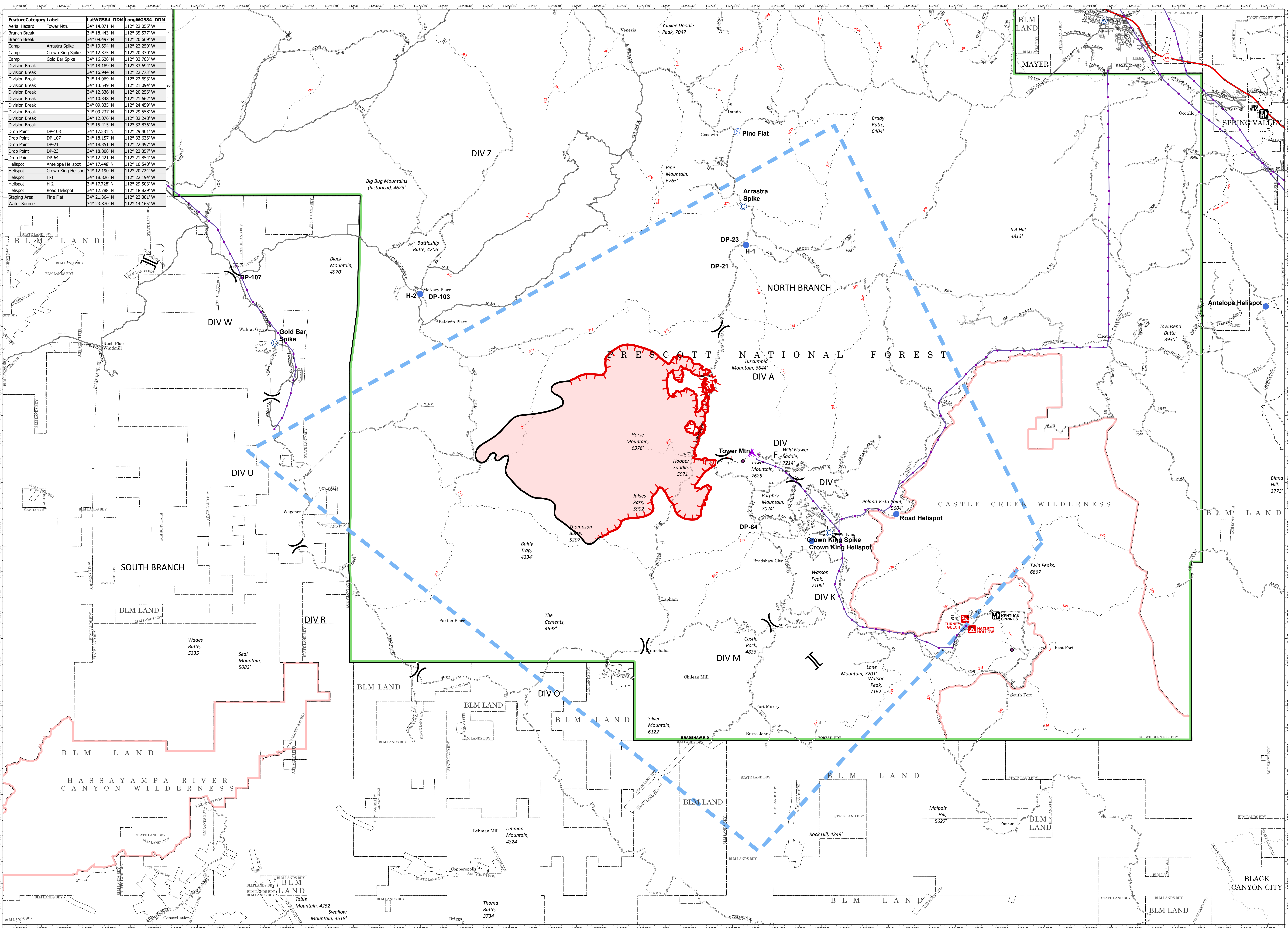
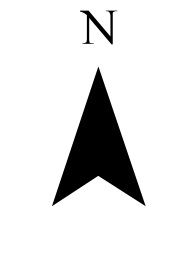


FeatureCategory	Label	LatWGS84_DDM	LongWGS84_DDM
Aerial Hazard	Tower Mtn.	34° 14.071' N	112° 22.055' W
Branch Break		34° 18.443' N	112° 25.577' W
Branch Break		34° 09.497' N	112° 26.669' W
Camp	Arrastra Spike	34° 19.694' N	112° 22.259' W
Camp	Crown King Spike	34° 12.375' N	112° 20.330' W
Camp	Gold Bar Spike	34° 16.628' N	112° 32.763' W
Division Break		34° 18.189' N	112° 33.694' W
Division Break		34° 16.944' N	112° 22.773' W
Division Break		34° 14.069' N	112° 22.693' W
Division Break		34° 13.549' N	112° 21.094' W
Division Break		34° 12.336' N	112° 20.256' W
Division Break		34° 10.348' N	112° 21.662' W
Division Break		34° 09.835' N	112° 24.459' W
Division Break		34° 09.237' N	112° 29.558' W
Division Break		34° 12.076' N	112° 32.248' W
Drop Point	DP-103	34° 15.415' N	112° 32.836' W
Drop Point	DP-107	34° 17.581' N	112° 20.401' W
Drop Point	DP-21	34° 18.351' N	112° 22.497' W
Drop Point	DP-23	34° 18.808' N	112° 22.357' W
Drop Point	DP-64	34° 12.421' N	112° 21.854' W
Helispot	Antelope Helispot	34° 17.448' N	112° 10.540' W
Helispot	Crown King Helispot	34° 12.190' N	112° 20.724' W
Helispot	H-1	34° 18.926' N	112° 22.194' W
Helispot	H-2	34° 17.728' N	112° 29.503' W
Helispot	Road Helispot	34° 12.788' N	112° 18.829' W
Staging Area	Pine Flat	34° 21.364' N	112° 22.381' W
Water Source		34° 23.870' N	112° 14.165' W



Air Operations
 Horse
 AZ-PNF-002178
 10/21/2020
 9,442 acres at 10/19/2020 2341

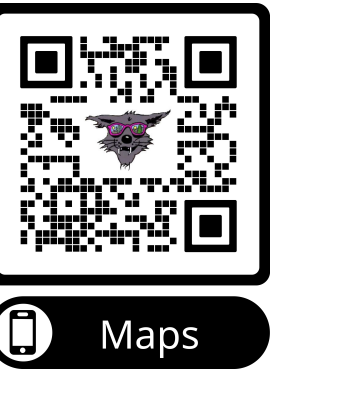


- ▲ Aerial Hazard
- ⊙ Camp
- Drop Point
- Helispot
- ⊙ Staging Area
- ⊙ Water Source
- ⊕ Division Break
- ⊕ Branch Break
- Electronic Site
- Layer
- Transmission Lines
- Uncontrolled Fire Edge
- Contained Line
- - - Temporary Flight Restriction
- Wildfire Daily Fire Perimeter



**SOUTHWEST AREA TYPE 1
 INCIDENT MANAGEMENT TEAM 2**

Southwest IMT 2
 10/20/2020 1916
 North American 1983 Datum. Lat Long Grid
 Name: Air Ops



Maps