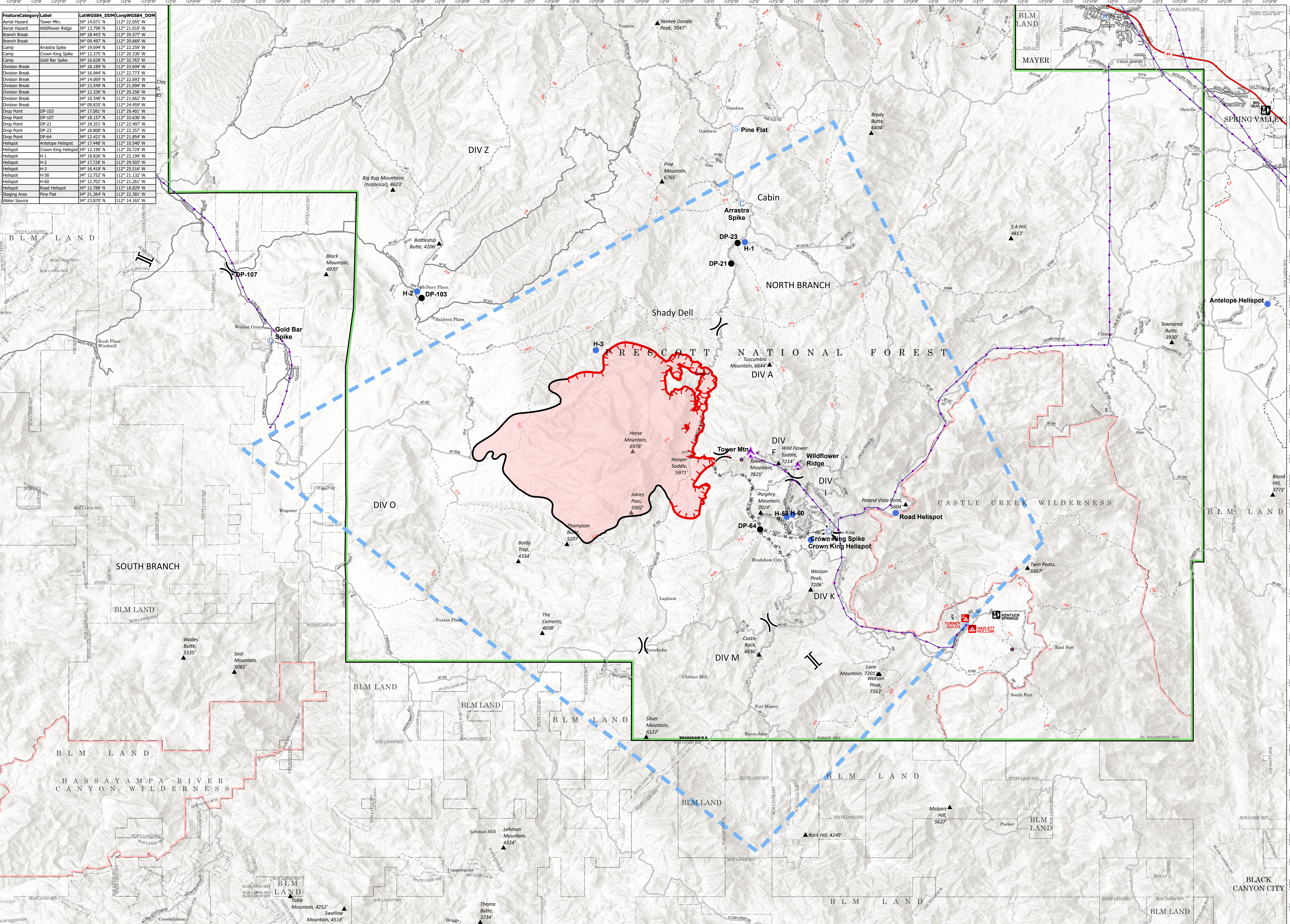


| FeatureCategory | Label               | LatWGS84_DDM  | LongWGS84_DDM  |
|-----------------|---------------------|---------------|----------------|
| Aerial Hazard   | Tower Mtn.          | 34° 14.071' N | 112° 22.055' W |
| Aerial Hazard   | Wildflower Ridge    | 34° 13.788' N | 112° 21.010' W |
| Branch Break    | Branch Break        | 34° 18.443' N | 112° 35.577' W |
| Branch Break    | Branch Break        | 34° 09.497' N | 112° 20.669' W |
| Camp            | Arrastra Spike      | 34° 15.694' N | 112° 22.259' W |
| Camp            | Crown King Spike    | 34° 12.375' N | 112° 20.330' W |
| Camp            | Gold Bar Spike      | 34° 16.628' N | 112° 32.763' W |
| Division Break  | Division Break      | 34° 18.789' N | 112° 23.094' W |
| Division Break  | Division Break      | 34° 16.944' N | 112° 22.773' W |
| Division Break  | Division Break      | 34° 14.069' N | 112° 22.693' W |
| Division Break  | Division Break      | 34° 13.549' N | 112° 21.094' W |
| Division Break  | Division Break      | 34° 12.336' N | 112° 20.256' W |
| Division Break  | Division Break      | 34° 10.348' N | 112° 21.662' W |
| Drop Point      | DP-103              | 34° 17.581' N | 112° 29.401' W |
| Drop Point      | DP-107              | 34° 18.157' N | 112° 33.636' W |
| Drop Point      | DP-21               | 34° 18.351' N | 112° 22.497' W |
| Drop Point      | DP-23               | 34° 18.808' N | 112° 22.357' W |
| Drop Point      | DP-64               | 34° 12.421' N | 112° 21.854' W |
| Helispot        | Antelope Helispot   | 34° 17.448' N | 112° 10.540' W |
| Helispot        | Crown King Helispot | 34° 12.190' N | 112° 20.724' W |
| Helispot        | H-1                 | 34° 18.826' N | 112° 22.194' W |
| Helispot        | H-2                 | 34° 17.728' N | 112° 25.503' W |
| Helispot        | H-3                 | 34° 16.418' N | 112° 25.516' W |
| Helispot        | H-58                | 34° 12.752' N | 112° 21.132' W |
| Helispot        | H-60                | 34° 12.702' N | 112° 21.351' W |
| Helispot        | Road Helispot       | 34° 12.788' N | 112° 18.829' W |
| Staging Area    | Pine Flat           | 34° 21.364' N | 112° 22.381' W |
| Water Source    | Water Source        | 34° 23.870' N | 112° 14.165' W |



### Air Operations

Horse  
 AZ-PNF-002178  
 10/23/2020  
 9,536 acres at 10/20/2020 2242

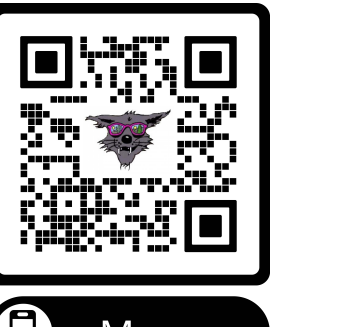


- ▲ Aerial Hazard
- Ⓞ Camp
- Drop Point
- Helispot
- Ⓢ Staging Area
- Ⓜ Water Source
- ⌋ Division Break
- ⌋ Branch Break
- Electronic Site
- Transmission Lines
- Uncontrolled Fire Edge
- Contained Line
- ⊘ Completed Dozer Line
- H - H Completed Hand Line
- R - R Road as Completed Line
- Temporary Flight Restriction
- Wildfire Daily Fire Perimeter



**SOUTHWEST AREA TYPE 1  
 INCIDENT MANAGEMENT TEAM 2**

Southwest IMT 2  
 10/22/2020 1923  
 North American 1983 Datum. Lat Long Grid  
 Name: Air Ops



Maps