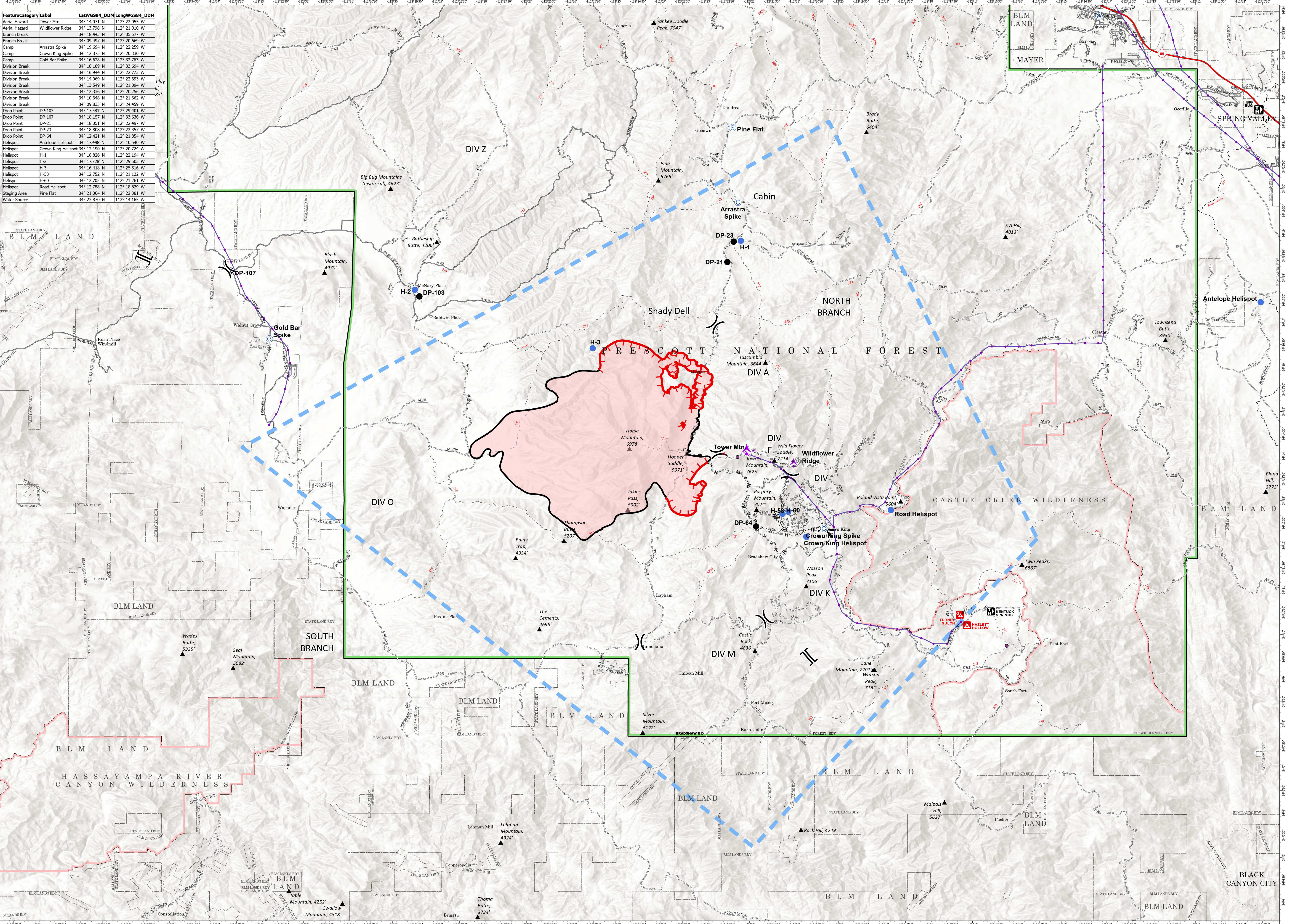


Feature/Category	Label	LatWGS84_DDM	LongWGS84_DDM
Aerial Hazard	Tower Mtn.	34° 14.071' N	112° 22.055' W
Aerial Hazard	Wildflower Ridge	34° 13.788' N	112° 21.010' W
Branch Break		34° 18.443' N	112° 35.577' W
Branch Break		34° 09.497' N	112° 20.669' W
Camp	Arrastra Spike	34° 19.694' N	112° 22.259' W
Camp	Crown King Spike	34° 12.375' N	112° 20.330' W
Camp	Gold Bar Spike	34° 16.628' N	112° 32.763' W
Division Break		34° 18.189' N	112° 23.694' W
Division Break		34° 16.944' N	112° 22.773' W
Division Break		34° 14.069' N	112° 22.693' W
Division Break		34° 13.549' N	112° 21.094' W
Division Break		34° 12.336' N	112° 20.256' W
Division Break		34° 10.348' N	112° 21.662' W
Division Break		34° 09.335' N	112° 24.459' W
Drop Point	DP-103	34° 17.581' N	112° 29.401' W
Drop Point	DP-107	34° 18.157' N	112° 33.636' W
Drop Point	DP-21	34° 18.351' N	112° 22.497' W
Drop Point	DP-23	34° 18.808' N	112° 22.357' W
Drop Point	DP-64	34° 12.421' N	112° 21.854' W
Helispot	Antelope Helispot	34° 17.448' N	112° 10.540' W
Helispot	Crown King Helispot	34° 12.190' N	112° 20.724' W
Helispot	H-1	34° 18.826' N	112° 22.194' W
Helispot	H-2	34° 17.728' N	112° 29.503' W
Helispot	H-3	34° 16.418' N	112° 25.516' W
Helispot	H-58	34° 10.752' N	112° 21.132' W
Helispot	H-60	34° 12.702' N	112° 21.261' W
Helispot	Road Helispot	34° 12.788' N	112° 18.629' W
Staging Area	Pine Flat	34° 21.364' N	112° 22.381' W
Water Source		34° 23.870' N	112° 14.165' W



Air Operations
Horse
AZ-PNF-002178
10/24/2020
9,537 acres at 10/20/2020 2242



- ▲ Aerial Hazard
- Ⓞ Camp
- Drop Point
- Helispot
- Ⓢ Staging Area
- Ⓜ Water Source
- ⌋ Division Break
- ⌋ Branch Break
- Electronic Site
- Transmission Lines
- Uncontrolled Fire Edge
- Contained Line
- ⊘ Completed Dozer Line
- H - H Completed Hand Line
- R - R Road as Completed Line
- Temporary Flight Restriction
- Wildfire Daily Fire Perimeter



**SOUTHWEST AREA TYPE 1
INCIDENT MANAGEMENT TEAM 2**

Southwest IMT 2
10/23/2020 1931
North American 1983 Datum, Lat Long Grid
Name: Air Ops



Maps