

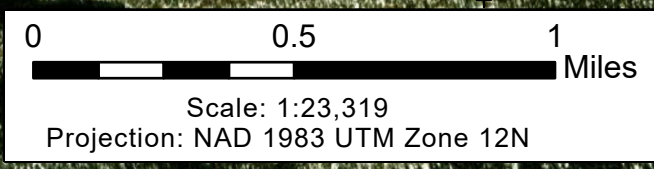
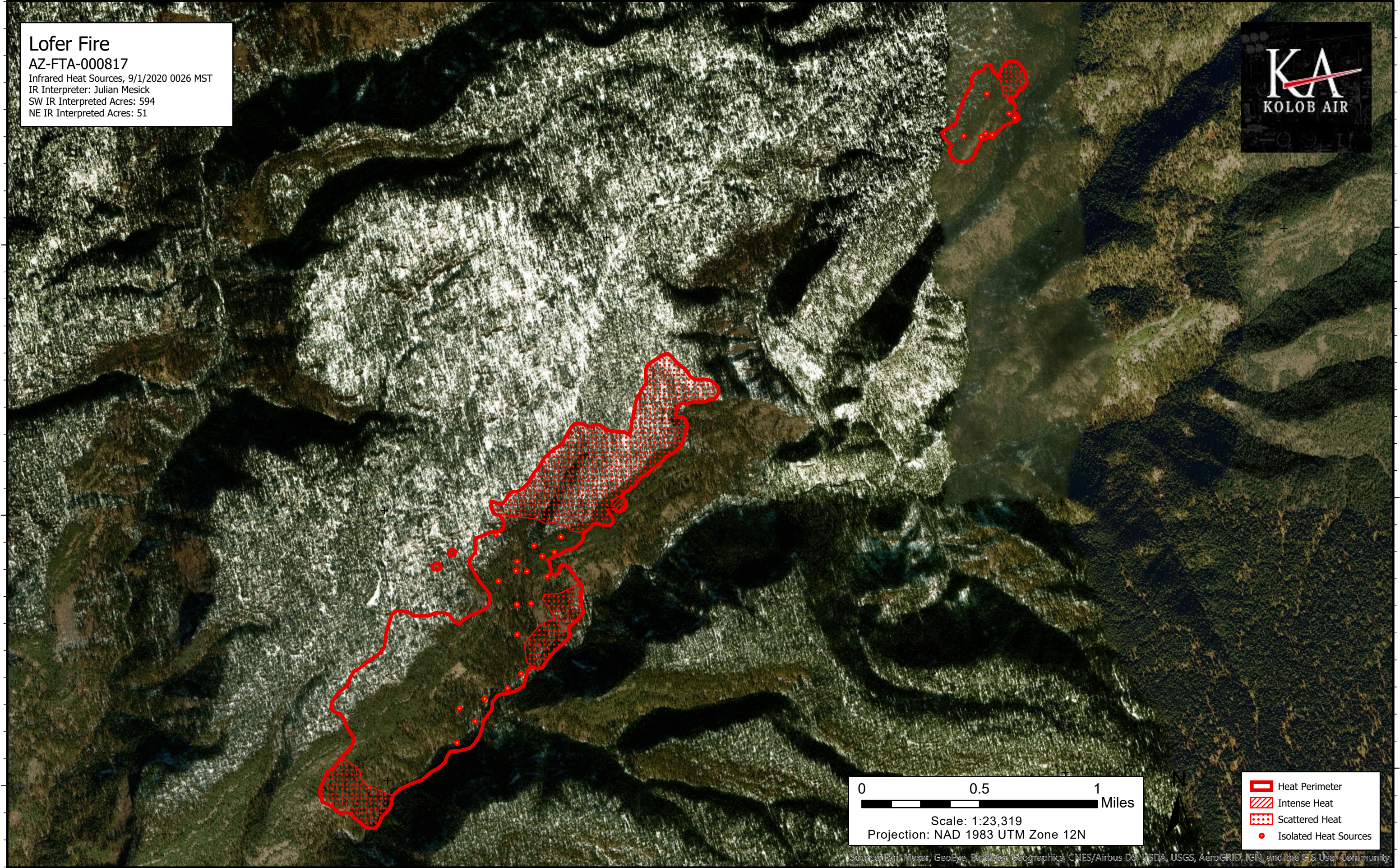
109°44'W 109°43'W 109°42'W 109°41'W 109°40'W 109°39'W

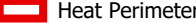



Lofer Fire
AZ-FTA-000817
Infrared Heat Sources, 9/1/2020 0026 MST
IR Interpreter: Julian Mesick
SW IR Interpreted Acres: 594
NE IR Interpreted Acres: 51



33°46'N
33°45'N
33°44'N

33°46'N
33°45'N
33°44'N



-  Heat Perimeter
-  Intense Heat
-  Scattered Heat
-  Isolated Heat Sources

Source: Esri, Maxar, GeoEye, Earthstar Geographics, CNES/Airbus DS, USDA, USGS, AeroGRID, IGN, and the GIS User Community

109°44'W 109°43'W 109°42'W 109°41'W 109°40'W 109°39'W