

BRANCH I

DIV C

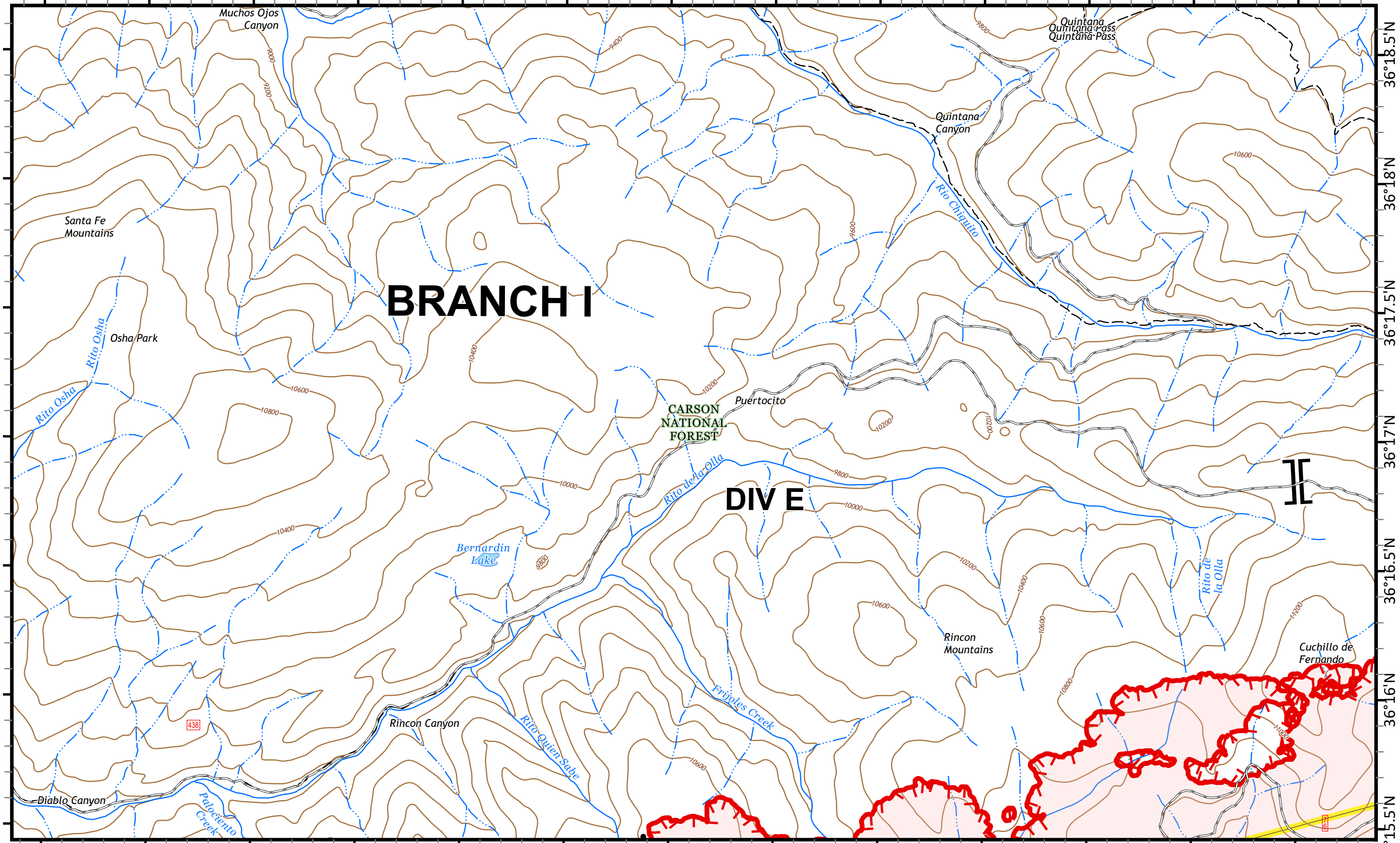
DP-10

DP-5

CARSON NATIONAL FOREST

**TAOS COUNTY
MORA COUNTY**

105°27.5'W 105°27'W 105°26.5'W 105°26'W 105°25.5'W 105°25'W 105°24.5'W 105°24'W 105°23.5'W 105°23'W 105°22.5'W 105°22'W 105°21.5'W



BRANCH I

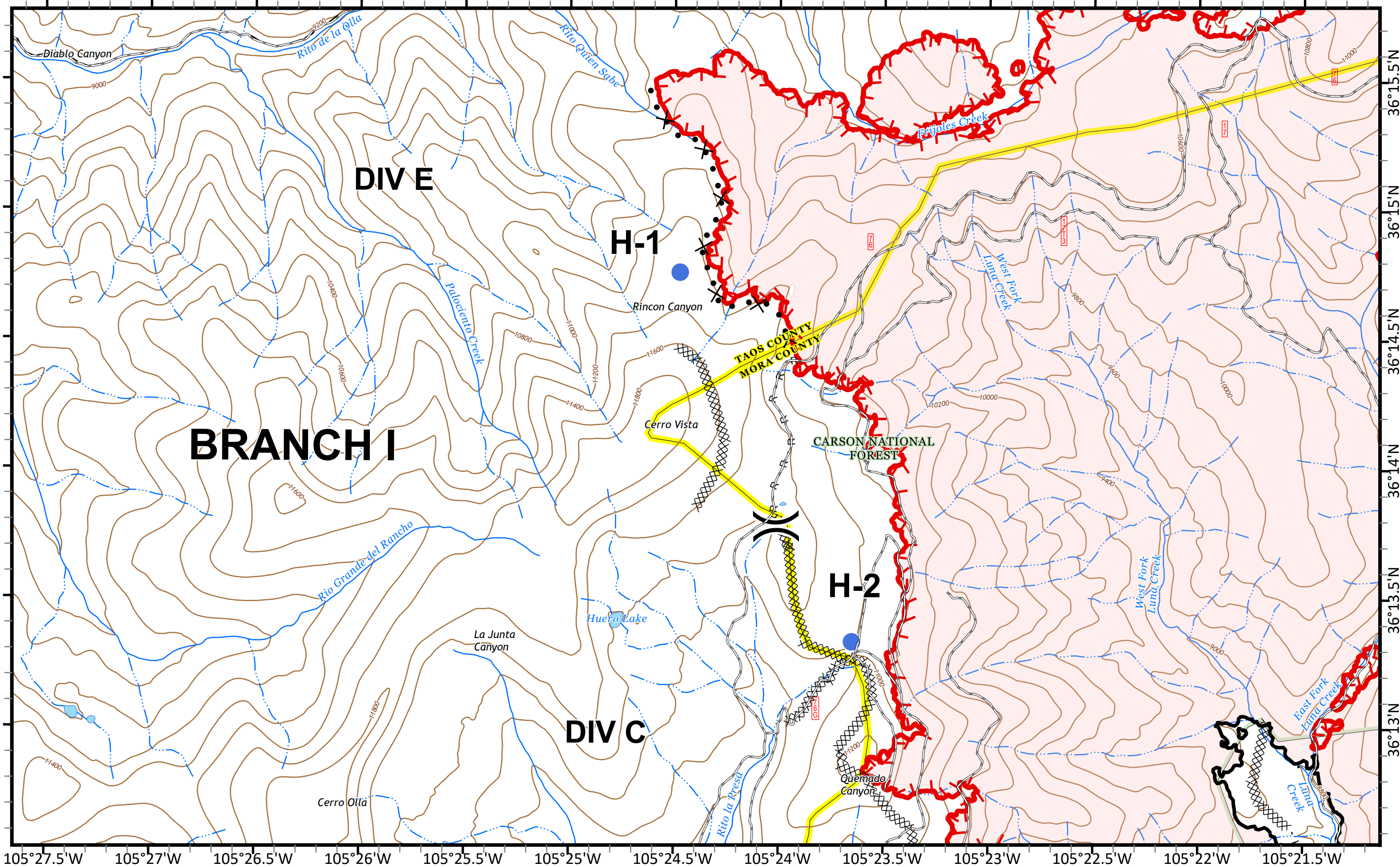
CARSON NATIONAL FOREST

DIV E

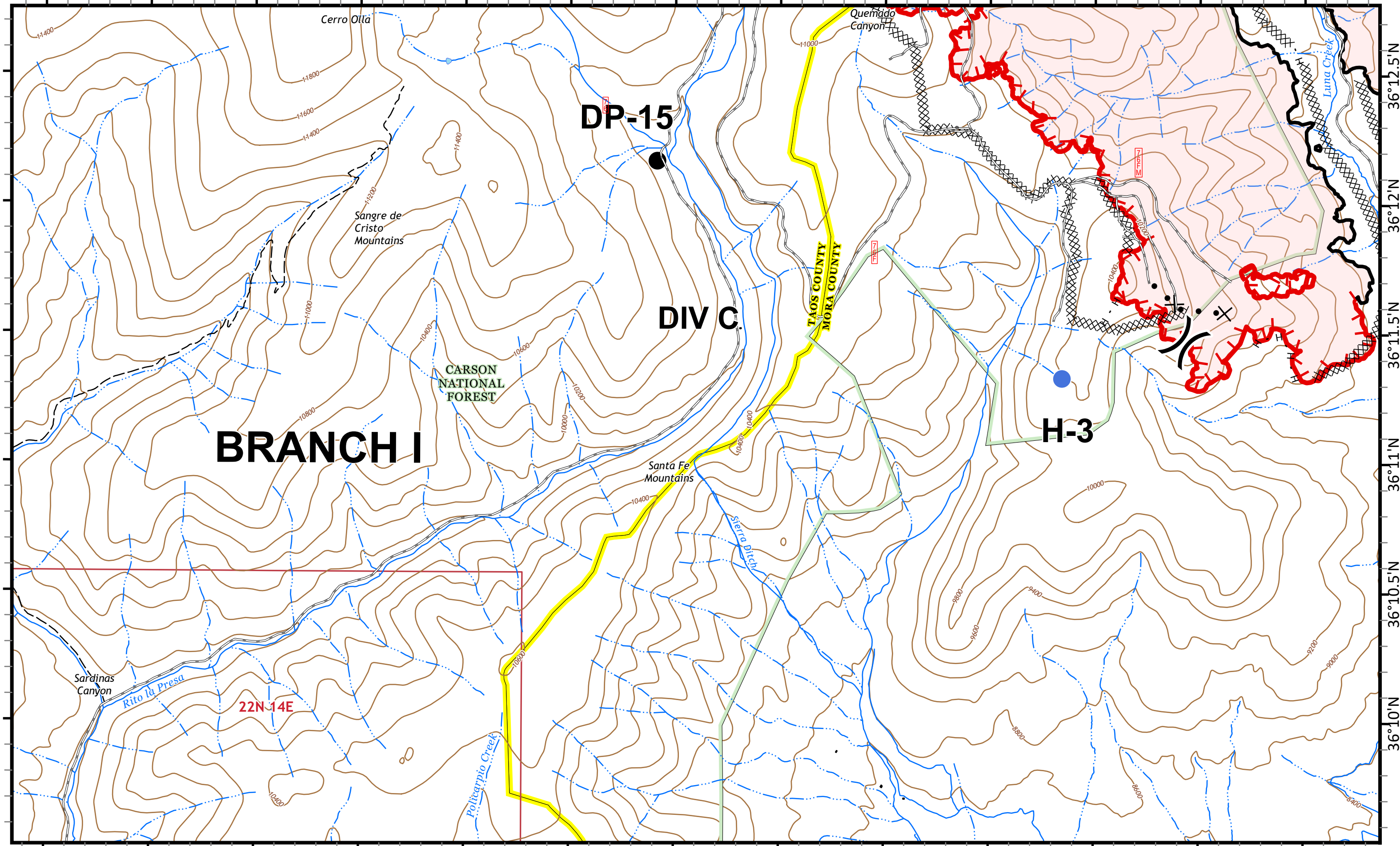
II

105°27.5'W 105°27'W 105°26.5'W 105°26'W 105°25.5'W 105°25'W 105°24.5'W 105°24'W 105°23.5'W 105°23'W 105°22.5'W 105°22'W 105°21.5'W

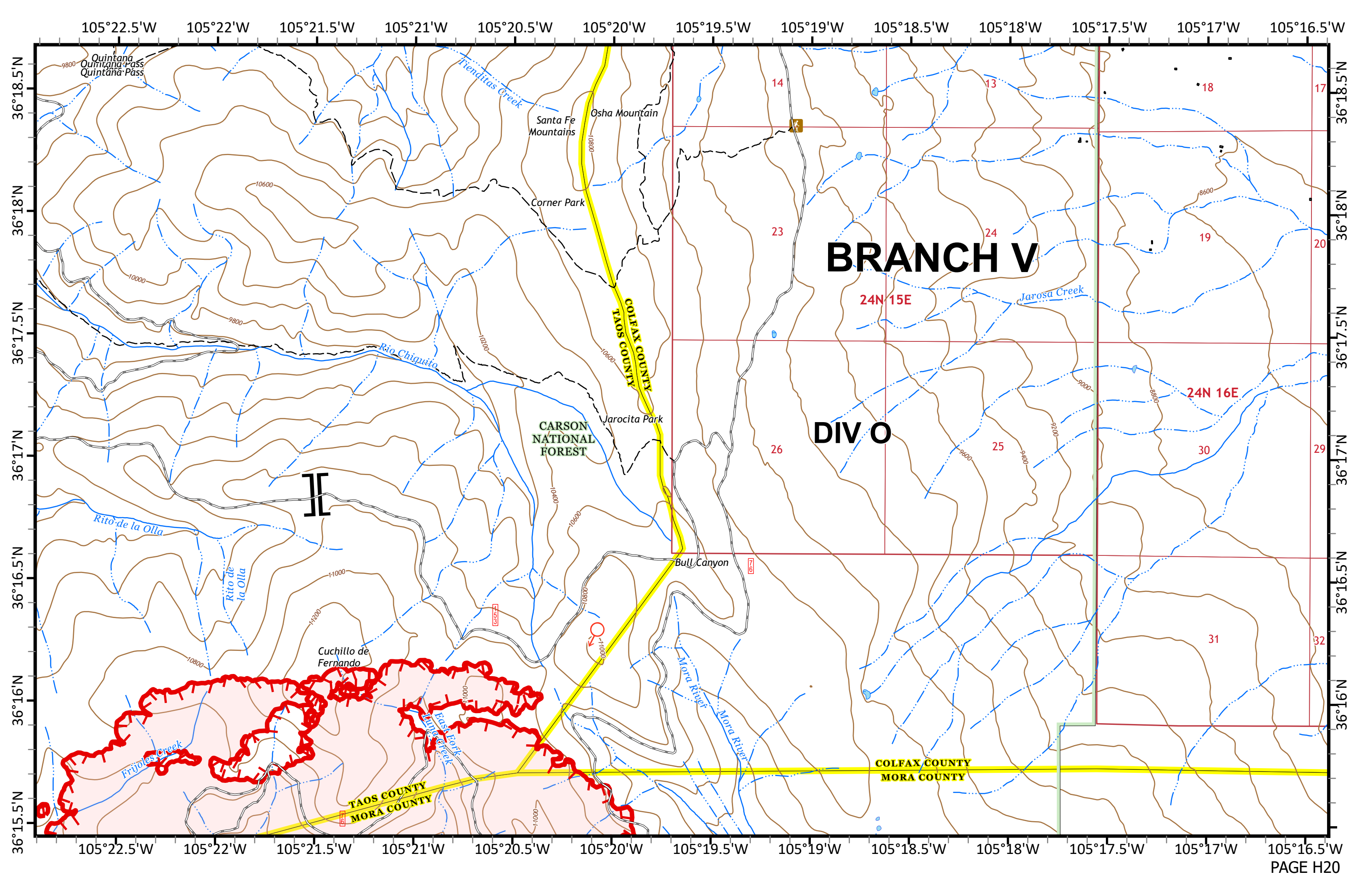
105°27.5'W 105°27'W 105°26.5'W 105°26'W 105°25.5'W 105°25'W 105°24.5'W 105°24'W 105°23.5'W 105°23'W 105°22.5'W 105°22'W 105°21.5'W



105°27.5'W 105°27'W 105°26.5'W 105°26'W 105°25.5'W 105°25'W 105°24.5'W 105°24'W 105°23.5'W 105°23'W 105°22.5'W 105°22'W 105°21.5'W



105°27.5'W 105°27'W 105°26.5'W 105°26'W 105°25.5'W 105°25'W 105°24.5'W 105°24'W 105°23.5'W 105°23'W 105°22.5'W 105°22'W 105°21.5'W



105°22.5'W 105°22'W 105°21.5'W 105°21'W 105°20.5'W 105°20'W 105°19.5'W 105°19'W 105°18.5'W 105°18'W 105°17.5'W 105°17'W 105°16.5'W

36°18.5'N
36°18'N
36°17.5'N
36°17'N
36°16.5'N
36°16'N
36°15.5'N

36°18.5'N
36°18'N
36°17.5'N
36°17'N
36°16.5'N
36°16'N
36°15.5'N

105°22.5'W 105°22'W 105°21.5'W 105°21'W 105°20.5'W 105°20'W 105°19.5'W 105°19'W 105°18.5'W 105°18'W 105°17.5'W 105°17'W 105°16.5'W

Quintana
Quintana Pass
Quintana Pass

Trenditas Creek

Santa Fe
Mountains

Osha Mountain

Corner Park

COLFAX COUNTY
TAOS COUNTY

CARSON
NATIONAL
FOREST

Jarosita Park

Bull Canyon

Cuchillo de
Fernando

TAOS COUNTY
MORA COUNTY

COLFAX COUNTY
MORA COUNTY

BRANCH V

DIV O

14

13

18

17

23

24

19

20

24N 15E

Jarosa Creek

24N 16E

26

25

30

29

Rito de la Olla

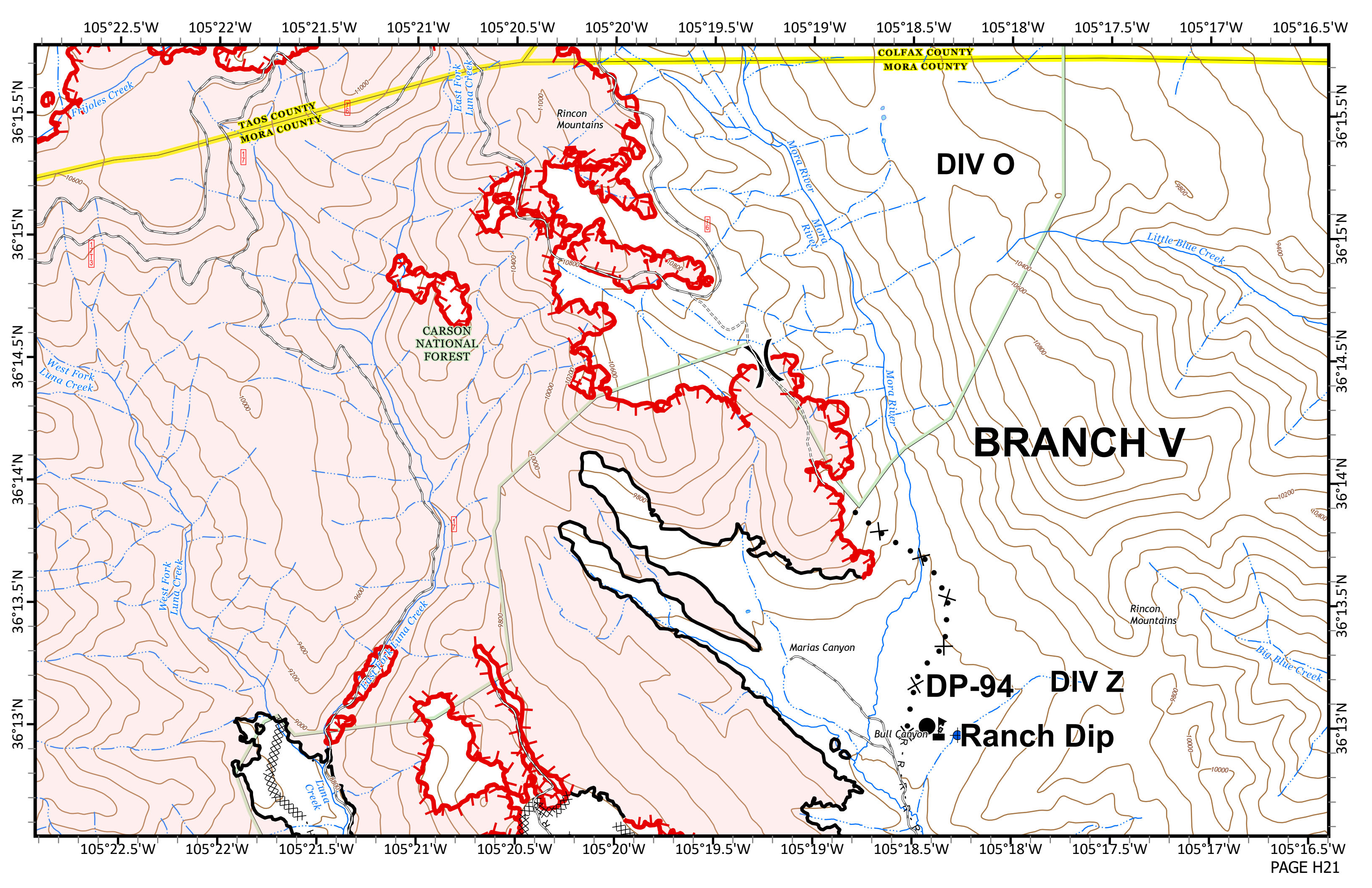
Rito de
la Olla

Frijoles Creek

East Fork
Tulipe Creek

Mora River

Mora River



COLFAX COUNTY
MORA COUNTY

TAOS COUNTY
MORA COUNTY

CARSON
NATIONAL
FOREST

DIV O

BRANCH V

DP-94 DIV Z

Ranch Dip

