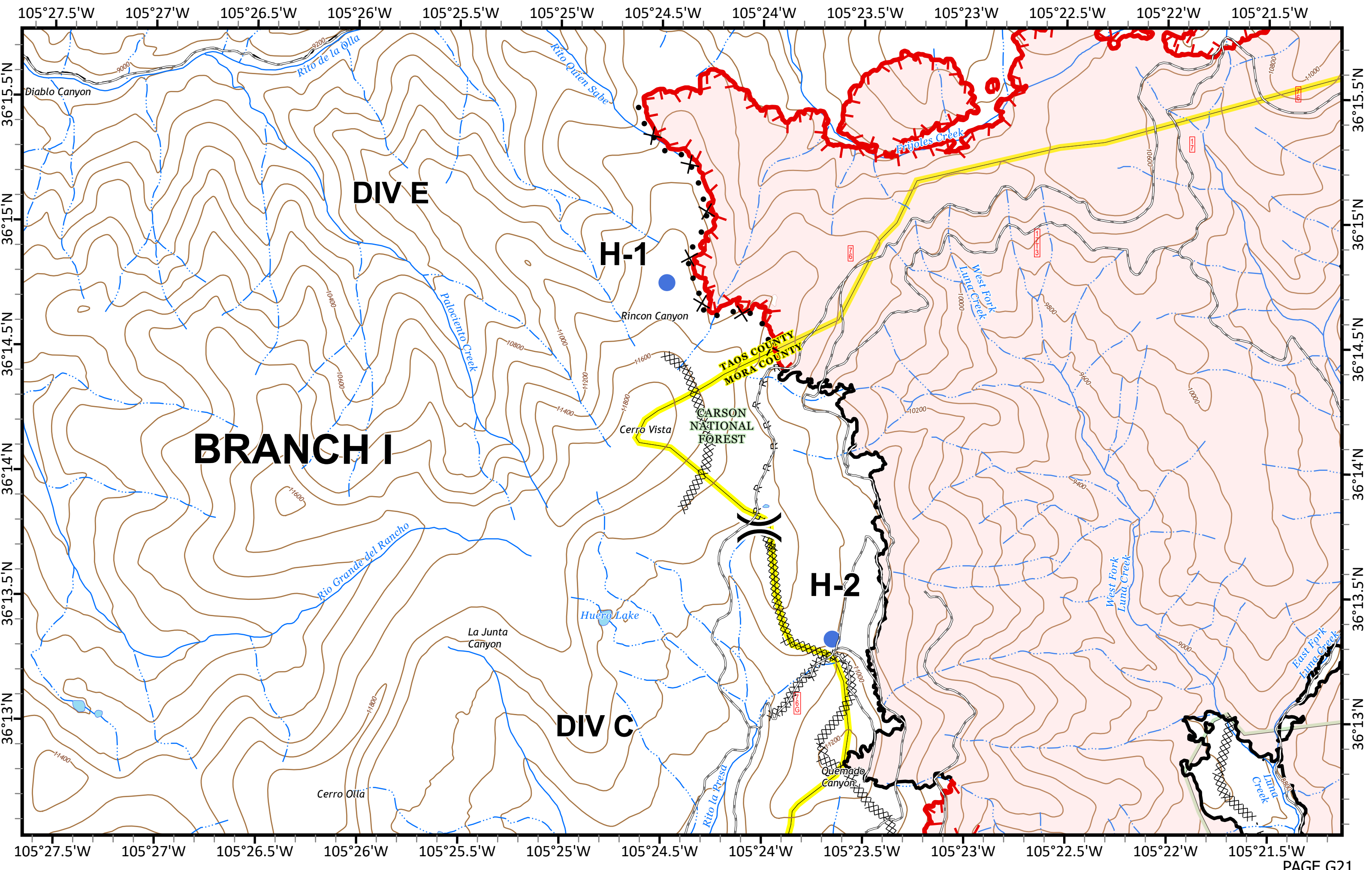
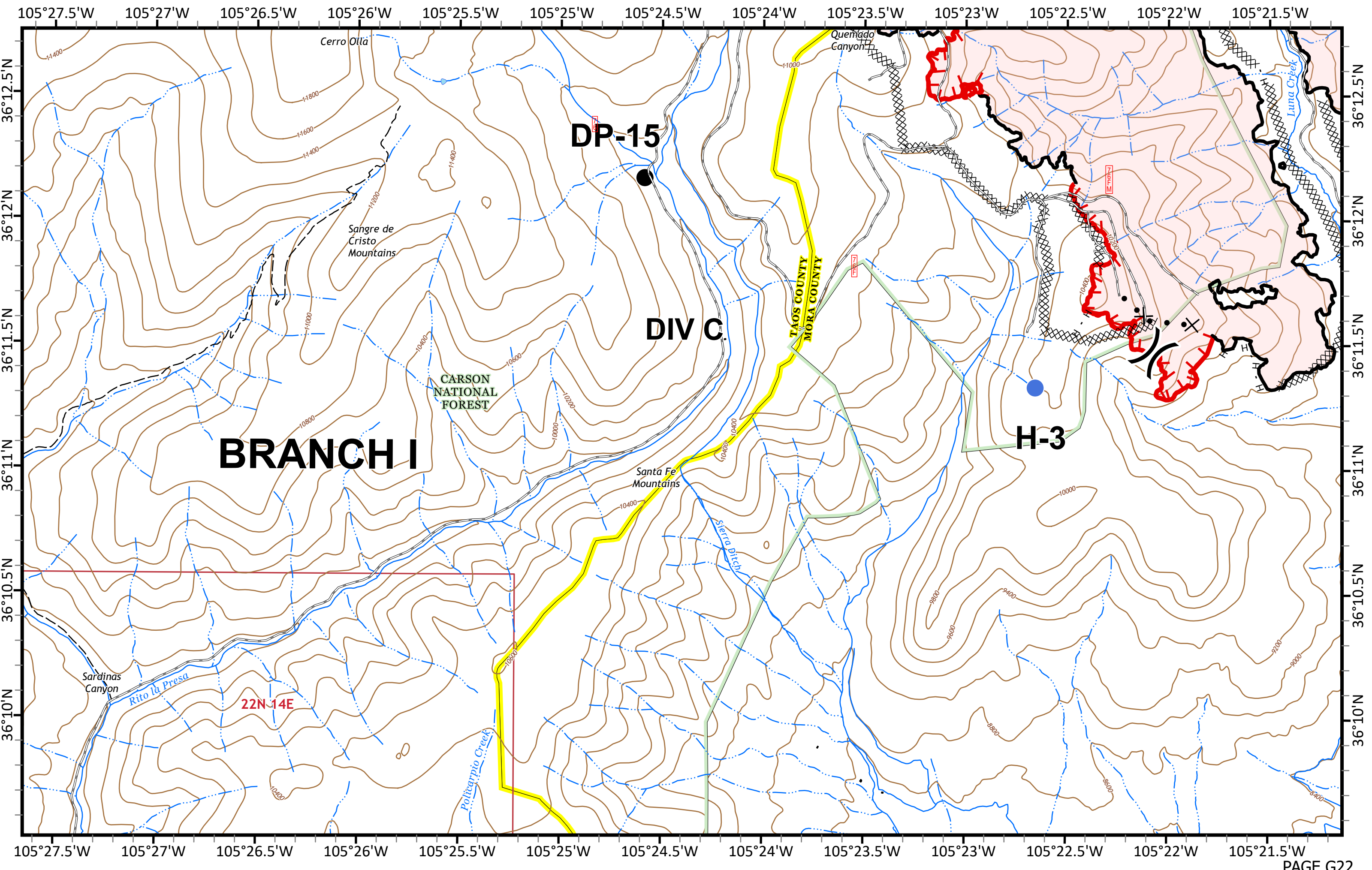


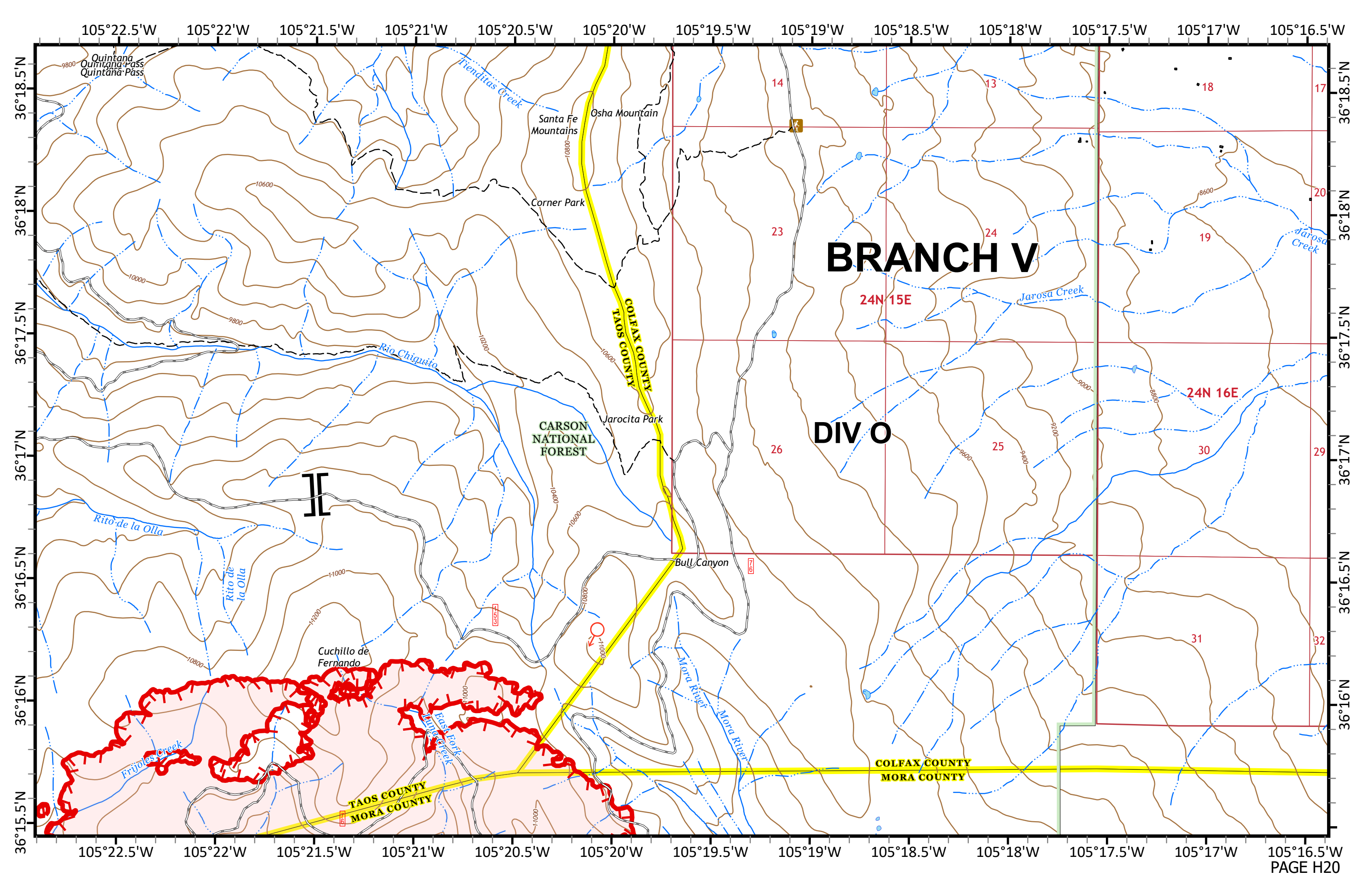
BRANCH I

DIVE

II







105°22.5'W 105°22'W 105°21.5'W 105°21'W 105°20.5'W 105°20'W 105°19.5'W 105°19'W 105°18.5'W 105°18'W 105°17.5'W 105°17'W 105°16.5'W

36°18.5'N
36°18'N
36°17.5'N
36°17'N
36°16.5'N
36°16'N
36°15.5'N

36°18.5'N
36°18'N
36°17.5'N
36°17'N
36°16.5'N
36°16'N
36°15.5'N

105°22.5'W 105°22'W 105°21.5'W 105°21'W 105°20.5'W 105°20'W 105°19.5'W 105°19'W 105°18.5'W 105°18'W 105°17.5'W 105°17'W 105°16.5'W

BRANCH V

DIV O

**COLFAX COUNTY
TAOS COUNTY**

**COLFAX COUNTY
MORA COUNTY**

**TAOS COUNTY
MORA COUNTY**

**CARSON
NATIONAL
FOREST**

II

Quintana
Quintana Pass
Quintana Pass

Trenditas Creek

Santa Fe
Mountains

Osha Mountain

Corner Park

Rio Chiquito

Jarocita Park

Rito de la Olla

Rito de
la Olla

Cuchillo de
Fernando

Frijoles Creek

East Fork
Tular Creek

Bull Canyon

Mora River

Mora River

Jarosa
Creek

Jarosa
Creek

14

13

18

17

23

24

19

20

24N 15E

24N 16E

26

25

30

29

31

32

71

65

11000

9

6

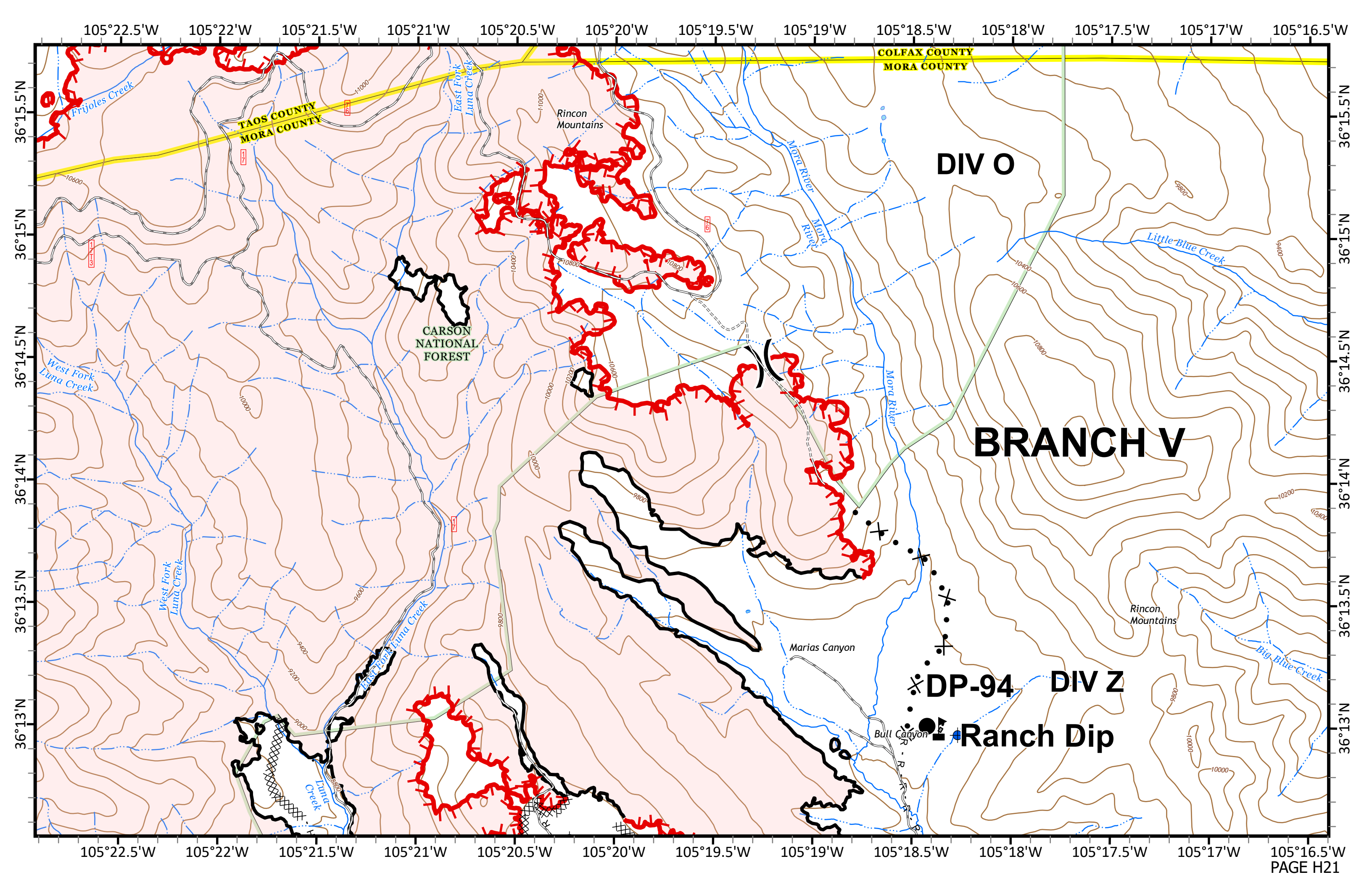
71

65

11000

9

6



COLFAX COUNTY
MORA COUNTY

TAOS COUNTY
MORA COUNTY

DIV O

CARSON
NATIONAL
FOREST

BRANCH V

✕ **DP-94**

DIV Z

● **Ranch Dip**

