

Saturday

INCIDENT ACTION PLAN

LUNA FIRE

NM-CAF-000631
P3NN84 (0302)



IAP'S



MAPS

OPERATIONAL PERIOD

10/24/2020 0700

to

10/25/2020 0700

INCIDENT OBJECTIVES (ICS 202)

1. Incident Name: <p style="text-align: center;">Luna Fire</p>	2. Operational Period:	Date From: 10/24/2020 Time From: 0700	Date To: 10/25/2020 Time To: 0700
--	-------------------------------	--	--------------------------------------

3. Objective(s):

Management Objectives

- Ensure that strategies and tactics provide for firefighter and public safety through the application of sound risk management principles.
- Minimize the threat of exposure to COVID-19 within the incident and surrounding communities by adhering to the CDC COVID-19 Guidelines.
- Minimize the threat to private property, threatened and endangered species, critical habitat, historic and cultural sites.
- Establish and strengthen cooperators, partners, and stakeholder relationships.

Control Objectives

- Keep the fire north of Chacon and Guadalupita.
- Keep the fire south of the 437 Road and Rio Chiquito Creek.
- Keep the fire east of the 518 Road.
- Keep the fire West of the 434 Road.

General Situational Awareness:

- Steep and rugged terrain, critically dry and receptive fuel beds, active area for fire history and drought stressed trees.
- In the COVID-19 environment, high density populations or large groups are particularly at risk. To help protect yourself, your family and to ensure all employees return home safely, make sure to practice social distancing.
- Enhanced hygiene (especially handwashing), PPE & monitoring practices help limit the infection rate of first responders.

5. Site Safety Plan Required? Yes No

Approved Site Safety Plan(s) Located at:


6. Incident Action Plan

<input checked="" type="checkbox"/> ICS 203	<input checked="" type="checkbox"/> ICS 215A	<input type="checkbox"/> ICS 205 A	<input type="checkbox"/> Check-in Procedure
<input checked="" type="checkbox"/> ICS 204	<input checked="" type="checkbox"/> ICS 220	<input checked="" type="checkbox"/> Training Message	<input checked="" type="checkbox"/> Human Resources Message
<input checked="" type="checkbox"/> ICS 205	<input checked="" type="checkbox"/> Facility Maps	<input checked="" type="checkbox"/> Travel Map	<input checked="" type="checkbox"/> Covid Screening Tool
<input checked="" type="checkbox"/> ICS 206	<input checked="" type="checkbox"/> Weather Forecast	<input type="checkbox"/> Demob Plan	<input type="checkbox"/> County Health Message
<input checked="" type="checkbox"/> ICS 208	<input checked="" type="checkbox"/> Fire Behavior	<input checked="" type="checkbox"/> Finance Message	<input checked="" type="checkbox"/> ICS 214

7. Prepared By: J. Schillinger, J. Owen, R. Asht Position/Title: PSC Signature:

8. Approved by Incident Commander: D. Mueller(T) Signature:

ORGANIZATION ASSIGNMENT LIST (ICS 203)

1. Incident Name: Luna Fire		2. Operational Period: Date From: 10/24/2020 Time From: 0700		Date To: 10/25/2020 Time To: 0700	
3. Incident Commander(s) and Command Staff:			7. Operation Section:		
IC/UC's	R. Young, D. Mueller(T)	Operations	S. Burns		
Deputy	C. Joseph	Deputy Operations			
Safety Officer	B. Savage	Night Ops	D. Fregulia		
Information Officer	N. Judy, S. Exline, P. Corral(T), J. Goodman(T)	Planning Ops	A. McBath		
Liaison Officer	R. Alpert, F. Flores	Branch	I	C. Rose	
4. Agency/Organization Representatives:		Division/Group	A	C. Costa	
Agency/Organization	Name	Division/Group	C	A. Valdez	
USFS AA	James Duran, Debbie Cress(T), Jack Lewis(T)	Division/Group	E	B. Glen, E. Hurtado(T)	
		Division/Group			
New Mexico State Forestry AA	Shannon Atencio, Arnie Friedt, Donald Griego	Division/Group			
		Division/Group			
Angel Fire Chief	John Murtagh	Division/Group			
SBR Fire Chief	Mickey Richardson	Branch	V	C. Stevens	
Mora County Under Sheriff	Americk Padilla	Division/Group	G	S. Erickson	
		Division/Group	O	S. Griego	
Mora County Emergency Manager	Rumaldo Piño	Division/Group	Z	P. Catlett, R. Ream(T)	
		Division/Group			
		Branch			
		Division/Group	STRUCTURE	K. Olson, T. Decker(T)	
		Division/Group			
		Division/Group			
		Division/Group			
		Division/Group			
		Division/Group			
		Division/Group			
		Branch			
5. Planning Section:		Division/Group			
Chief	J. Schillinger, J. Owen, R. Ashby(T)	Division/Group			
Deputy		Division/Group			
Resource Unit	R. Resnick, H. Kelmanson(T), K. McDonald(T)	Division/Group			
		Division/Group			
Situation Unit	T. Morlock, R. DeCamp, J. Mosley(T)	Division/Group			
Documentation Unit	J. Ostling	Division/Group			
Status Check-In	A. Saltzman	Division/Group			
Demobilization Unit	D. Loop	Division/Group			
GISS	D. Hutchinson, B. Kirk	Division/Group			
FBAN	M. Brown	Air Operations Branch	Director:	J. Keese	
LTAN	J. Shelton	Air Support Group Supervisor	K. McElfish		
IMET	R. Fontenot	Air Tactical Group Supervisor			
Training Tech Spec	B. Smith	Helibase Manager			
6. Logistics Section					
Chief	B. Schurr, J. Eckroth	8. Finance/Administration Section:			
Supply Unit	M. Bradford	Chief	T. Fork		
Facilities Unit	D. Roberts, D. Nugent, D. Norvell	Time Unit	M. Prochazka		
Ground Support Unit	Z. Wilcox, L. Campbell	Equipment Time	S. Reid		
Communications Unit	K. Throop(T)	Personnel Unit	C. Hamlet		
Medical Unit	J. Carlton, N. Ong(T)	Comp/Claims Unit	E. Downing		
ITSS	J. Youngblood, R. Martinez	Cost Unit	R. Siemers		
Prepared By: Name:	J. Schillinger, J. Owen, R. Ashby(T)	Position/Title:	PSC	Signature:	
ICS 203		Date/Time:	10/23/2020 2300 hours		



Fire Weather Forecast

SATURDAY, OCTOBER 24, 2020



FORECAST NO: 2
PREDICTION FOR: Saturday
SHIFT DATE: October 24, 2020
ISSUED: 1900 Friday, October 23, 2020

NAME OF FIRE:
UNIT:
Incident Meteorologist:

Luna
USFS/CNF
Royce Fontenot /s/
(240) 499-6642

**...RED FLAG WARNING TODAY...
 ...WINTER WEATHER CONDITIONS DEVELOPING SUNDAY...**

DISCUSSION: Winds will increase steadily through the day with the strongest winds along high ridges. Strong and erratic gusts are possible at all elevations due to mountain waves the strongest winds on ridges east of the main crest. Humidity values will fall into the upper teens to low 20's in the afternoon with moderate temperatures. Winds will continue through the evening hours and into the early morning hours on Sunday with fair humidity recoveries. A strong weather system will begin to move through the region on Sunday with light rain starting midday before rapidly turning to snow in the late afternoon.

SATURDAY:

- WEATHER: Partly cloudy becoming mostly sunny in the afternoon.
- WIND (20 FT): Ridges: W winds 16-19 mph with gusts to 25 mph increasing to 25-30 mph with gusts to 45 mph by 1300.
 Strongest winds just east of the crest.
 Valley: Downvalley 6-8 mph becoming W-NW 9-13 mph with gust to 25 mph by 1300.
- MAX TEMPERATURES: 54-60 F
- MIN RH: 17-20 %
- HAINES: 3
- INVERSION LIFT/MIXING HEIGHT: 1200 hrs/13000 feet MSL
- CHANCE PRECIPITATION: 0 %

SATURDAY NIGHT:

- WEATHER: Partly cloudy.
- WIND (20 FT): Ridges: W winds 25-30 mph with gusts to 40 mph becoming 17-20 mph with gusts to 25 mph by 0300.
 Strongest winds just east of the crest.
 Valley: W-NW 9-13 mph with gust to 25 mph becoming 7-10 mph with gusts to 18 mph by 0300
- MIN TEMPERATURES: 35-45 F
- MAX RH: 35-45%
- INVERSION: 500 feet AGL, weak
- CHANCE PRECIPITATION: 0%

SUNDAY:

- WEATHER: Increasing clouds through the day. Light rain expected by 1200 becoming snow by 1700.
- WIND (20 FT): Ridges: W winds 13-16 mph becoming SW 16-20 mph with gust to 25 mph by 1400.
 Valley: Downvalley 5-8 mph becoming SW 6-9 mph with gusts to 20 mph by 1400.
- MAX TEMPERATURES: 45-55 F
- MIN RH: 25-30 %
- HAINES: 2
- INVERSION LIFT/MIXING HEIGHT: 0900 hrs/10000 feet MSL
- CHANCE PRECIPITATION: 0% increasing to 70 % by 1700

3-5 DAY TRENDS

Monday: Very Cold. Winter conditions expected. Tuesday: Very Cold. Frequent snow showers. Wednesday: Slightly warmer. Snow showers.

Sunrise: 7:17 am Sunset: 6:13 pm
 Total Daylight 10:55:53 Gain/Loss -2:07

FIRE BEHAVIOR FORECAST

FORECAST NUMBER: 003	TYPE OF FIRE: Wildfire Full Suppression
FIRE NAME: Luna Fire	OPERATIONAL PERIOD: 10-24-20 24hr
DATE ISSUED: 10-23-20	TIME ISSUED: 2100
UNIT: NM-CAF-000631	SIGNED: <u> <i>Matt Brown</i> </u> Typed/printed: Matt Brown FBAN(t)

INPUTS

WEATHER SUMMARY: ******Red Flag Warning******

Temperature: 54-60 daytime, 35-40 overnight RH: 17-20% daytime, 35-45% overnight
 Ridge-top Winds: West 25-30 gusts to 45 mph by 1300 hrs
 Valley Winds: Down-valley 8-12 mph with gusts to 25 by 1300 hrs. Overnight W 14-18mph

OUTPUTS

FIRE BEHAVIOR

GENERAL:

The west winds will pressure the northern and eastern divisions especially in south-west aligned drainages. West winds will continue to cause the fire to flank into Bull Canyon where fuels are continuous. Fuels have continued to dry with the high winds and low RH. The ERCs are setting records with numbers that are 25% above previous records. The mixed conifer is predominately short needle or compact litter mixed with small hardwood leaf litter. The compactness of the litter resists fire spread until alignment of solar drying, high wind, and open exposed canopy. However, when these conditions align they can produce moderate to rapid rates of spread. Spotting has been observed up to ¼ mile. Probability of Ignition will be 70%.

SPECIFIC:

Divisions A/C/E: These divisions will experience favorable winds for most of the shift. Drainages in these divisions will continue to fill in as fire backs into the drainage bottoms and into wind sheltered areas. Interior islands and isolated concentrations of heavy dead and down will continue to consume completely as day-time RH remains low, lack of overnight recovery and good ventilation throughout the burn period.

Division G/O/Z: These divisions will experience adverse west wind conditions. The northwest and northeast corners of the fire will have the most concentrated heat and spread potential into aligned drainages. Fire will continue to back into Bull canyon inside the forest boundary as it enters a wind sheltered drainage that runs perpendicular to the forecasted wind direction. Fire spread on the south end of Bull Canyon has good spread potential in the continuous fuels. Fire will continue to move up Cuchillo de Fernando and wrap around in the continuous conifer fuels layer. Should spotting occur to opposite aspects, rapid rates of spread can be expected.

Mixed Conifer High Load (TU5) 4% Fine Dead Fuel Moisture

Mid Flame Winds Speed	Head Fire Flame Length	Heat Fire Rate of Spread
5	6-9 ft	10-15 ft/min
10	10-15 ft	20-28 ft/min
15	13-18 ft	35-45 ft/min

AIR OPERATIONS:

Smoke will be mixed out by daybreak from the wind impacts in the early morning. This will also mix out any inversions. High winds will have an adverse impact on air operations especially after 1300 hours.

SAFETY

Expect increased fire behavior in south west aligned drainages. The critical burning conditions in the area were able to produce spread distances exceeding 6 miles from the time of ignition. Prepare a risk management plan that accounts for the critical fire weather event and set trigger points before engaging. Watch for fire weakened trees. High winds will make mop-up operations hazardous inside the canopy within the burn.

ASSIGNMENT LIST (ICS 204 WF)

CONTROLLED UNCLASSIFIED
INFORMATION//BASIC

1. Incident Name: <p style="text-align: center;">Luna Fire</p>	2. Operational Period: Date From: 10/24/20 Date To: 10/25/20 Time From: 0700 Time To: 0700	3. Branch Division <p style="text-align: center;">I C</p>
---	---	---


4. Operations Personnel:		Page 1 of 1 Charlie
Operations Section Chief: S. Burns	Night Ops: D. Fregulia	
Branch Director: C. Rose	Branch Safety: J. Garber, C. Murillo, J. Smith	
Division/Group Supervisor: A. Valdez	Air Attack:	

5. Resources Assigned:							
Resource Identifier	ALS	LWD	Leader	Personnel	Request #	Hours	Reporting Location
HC2 PVT PACIFIC OASIS		11/4	J. Kwiatkowski	20	C-9	0700-1900	Mora High School
SMOD BLACK CANYON		11/2	W. Dasheno	13	O-79	0700-1900	Mora High School
SMOD RED RIVER CREW 12		11/4	J. Montoya	12	O-175	0700-1900	Mora High School
DOZ2 PVT PACHECO 1		11/1	E. Hurtado	2	E-1	0700-1900	Mora High School
DOZ2 PVT MARUJO		11/1	M. Marujo	2	E-3	0700-1900	Mora High School
DOZ2 PVT ESPINOZA		11/3	A. Espinoza	2	E-45	0700-1900	Mora High School
WT1 SANDOVAL COUNTY		11/2	D.J. Ortiz	1	E-30	0700-1900	Mora High School
WTS2 PVT BFPS		11/2	Lincoln	1	E-29	0700-1900	Mora High School
HEQB NAEGELE		11/2	K. Naegele	1	O-64	0700-1900	Mora High School
TFLD GILMORE		11/4	J. Gilmore	1	O-149	0700-1900	Mora High School
TFLD STANCIL(T)		11/4	D. Stancil	1	O-150	0700-1900	Mora High School
FAL1 DIEHL		11/5	T. Diehl	1	O-118	0700-1900	Mora High School
REMS CARLSBAD 6		11/2	E. Phelps	2	O-65	0700-1900	Mora High School

6. Work Assignments:
Continue to construct indirect dozer line and hand line from Alpha/Zulu break to Charlie/Echo break.

7. Special Instructions:
Work with READs to identify sensitive sites and mark with white flagging.
Backhaul excess trash and supplies.

8. Communications							
Name	Ch	Function	Rx Freq	Rx Tone	Tx Freq	Tx Tone	Notes
VISTA	1	COMMAND	172.2750		166.2000	114.8	Carson NF, Cerro Vista RPTR
PICURIS	2	COMMAND	172.2750		166.2000	110.9	Carson NF, Picuris RPTR
NIFC T2	4	TACTICAL	168.2000N	110.9	168.2000N	110.9	
VMED 28	12	MEDICAL	155.3400		155.3400		
A/G CMD	14	A/G CMD	167.9500		167.9500		
A/G TAC	15	A/G TAC	166.6125		166.6125		
AIRGUARD V3	16	AIRGUARD	168.6250N		168.6250N	110.9	

9. Prepared by: Name: R. Resnick, H. Kelmanson(T), K. McDonald(T) RESL Signature: 

ICS 204 Date/Time: 10/23/2020 2200 Personnel Count: 59

ASSIGNMENT LIST (ICS 204 WF)

CONTROLLED UNCLASSIFIED
INFORMATION/BASIC

1. Incident Name: <p style="text-align: center;">Luna Fire</p>	2. Operational Period: Date From: 10/24/20 Date To: 10/25/20 Time From: 0700 Time To: 0700	3. Branch Division <p style="text-align: center;">V O</p>
		Page 1 of 1 Oscar

4. Operations Personnel:	
Operations Section Chief: S. Burns	Night Ops: D. Fregulia
Branch Director: C. Stevens	Branch Safety: J. Garber, C. Murillo, J. Smith
Division/Group Supervisor: S. Griego	Air Attack:

5. Resources Assigned:							
Resource Identifier	ALS	LWD	Leader	Personnel	Request #	Hours	Reporting Location
HC2IA RIO GRANDE		11/1	S. Grvogus	15	C-8	0700-1900	Mora High School
HC2IA PVT GREYBACK FORESTRY 5A		10/28	B. Larkin	20	C-12	0700-1900	Mora High School
DOZ2 PVT TRAMBLEY CONST		11/4	F. Trambley	1	E-62	0700-1900	Mora High School
DOZ2 PVT GARCIA EXCAVATING		11/5	G. Garcie	1	E-63	0700-1900	Mora High School
DOZ2 PVT ASHE EARTH MOVING		11/5	J. Sanchez	2	E-65	0700-1900	Mora High School
TFLD RANDALL		11/5	J. Randall	1	O-137	0700-1900	Mora High School
REAF OSIPCHUK			M. Osipchuk	1	O-30	0700-1900	Mora High School
REAF BAILEY			R. Bailey	1	O-32	0700-1900	Mora High School

6. Work Assignments:
Construct dozer line and hand line staying as direct as possible from the Oscar/Zulu break north into Marias Canyon to prevent fire spread into Bull Canyon.

7. Special Instructions:

8. Communications							
Name	Ch	Function	Rx Freq	Rx Tone	Tx Freq	Tx Tone	Notes
VISTA	1	COMMAND	172.2750		166.2000	114.8	Carson NF, Cerro Vista RPTR
PICURIS	2	COMMAND	172.2750		166.2000	110.9	Carson NF, Picuris RPTR
R3 TAC2	7	TACTICAL	168.6750		168.6750		
VMED 28	12	MEDICAL	155.3400		155.3400		
A/G CMD	14	A/G CMD	167.9500		167.9500		
A/G TAC	15	A/G TAC	166.6125		166.6125		
AIRGUARD V3	16	AIRGUARD	168.6250N		168.6250N	110.9	

9. Prepared by: Name: R. Resnick, H. Kelmanson(T), K. McDonald(T) RESL Signature:

ICS 204 Date/Time: 10/23/2020 2200 Personnel Count: 42

ASSIGNMENT LIST (ICS 204 WF)

CONTROLLED UNCLASSIFIED
INFORMATION//BASIC

1. Incident Name: <p style="text-align: center;">Luna Fire</p>	2. Operational Period: Date From: 10/24/20 Date To: 10/25/20 Time From: 0700 Time To: 0700	3. Branch Division <p style="text-align: center;">STRUCTURE</p>
---	---	---

4. Operations Personnel:		Page 1 of 1
Operations Section Chief: S. Burns	Night Ops: D. Fregulia	
Branch Director:	Branch Safety: J. Garber, C. Murillo	
Division/Group Supervisor: K. Olson, T. Decker(T)	Air Attack:	

5. Resources Assigned:							
Resource Identifier	ALS	LWD	Leader	Personnel	Request #	Hours	Reporting Location
ENG6 QUESTA E671			S. Polchies	2	E-20	0700-1900	Mora High School

6. Work Assignments:
 Continue assessment and develop map points for the following communities; Angel Fire, Chacon, Black Lakes, Guadalupita, Valles Escondido and Sierra Bonita.
 Prep structures in Division Alpha, Division Zulu, and Division Oscar.

7. Special Instructions:

8. Communications							
Name	Ch	Function	Rx Freq	Rx Tone	Tx Freq	Tx Tone	Notes
VISTA	1	COMMAND	172.2750		166.2000	114.8	Carson NF, Cerro Vista RPTR
PICURIS	2	COMMAND	172.2750		166.2000	110.9	Carson NF, Picuris RPTR
R3 TAC3	8	TACTICAL	168.7750		168.7750		
VMED 28	12	MEDICAL	155.3400		155.3400		
A/G CMD	14	A/G CMD	167.9500		167.9500		
A/G TAC	15	A/G TAC	166.6125		166.6125		
AIRGUARD V3	16	AIRGUARD	168.6250N		168.6250N	110.9	

9. Prepared by: Name:	R. Resnick, H. Kelmanson(T), K. McDonald(T)	RESL	Signature:
ICS 204	Date/Time: 10/23/2020 2200	Personnel Count: 2	

INCIDENT RADIO COMMUNICATIONS PLAN	Incident Name Luna	Date/Time Prepared 10/23/2020	Operational Period Date/Time 10/24/20 0700-10/25/20 0659
---	------------------------------	---	--

Frequency information contained within is Sensitive but Unclassified. Not for public dissemination.

Zn Ch	Function	Channel Name/Trunked Radio System Talkgroup	Assignment	RX Freq	RX Tone/NAC	TX Freq	Tx Tone/NAC	Dev	Pwr	Mode A, D or M	Remarks
1	COMMAND	VISTA	All Divisions	172.2750		166.2000	114.8	N	H	A	Carson NF, Cerro Vista RPTR
2	COMMAND	PICURIS	All Divisions	172.2750		166.2000	110.9	N	H	A	Carson NF, Picuris RPTR
3	TAC	NIFC T1	Div A	168.0500	110.9	168.0500	110.9	N	H	A	
4	TAC	NIFC T2	Div C	168.2000	110.9	168.2000	110.9	N	H	A	
5	TAC	NIFC T3	Div Z	168.6000	110.9	168.6000	110.9	N	L	A	
6	TAC	R3 TAC1	Div G	167.5500		167.5500		N	L	A	
7	TAC	R3 TAC2	Div O	168.6750		168.6750		N	L	A	
8	TAC	R3 TAC3	Structure Gp	168.7750		168.7750		N	H	A	
9	TAC	CRSN FIR	Div E	169.1750		169.1750		N	L	A	
10	Interop/TAC*	ST FORST	Initial Attack	159.4200		159.4200		N	L	A	
11	Interop/TAC*	ST FIRE	Initial Attack	154.3100		154.3100		N	L	A	
12	MEDICAL	VMED 28	All Divisions	155.3400		155.3400		N	L	A	
13	MEDICAL	VMED 29	Not Assigned	155.3475		155.3475		N	L	A	
14/18	A/G	A/G CMD	All Divisions	167.9500		167.9500		N	L	A	
15/19	A/G	A/G TAC	All Divisions	166.6125		166.6125		N	L	A	
16/20	EMERGENCY	AIR GUARD	EMERGENCY	168.6250	CSQ	168.6250	110.9	N	H	A	

Prepared By (Communications Unit Leader)

Kevin Throop COML(t)

Incident Location

County: State: NM Latitude: N Longitude: W

The convention calls for frequency lists to show four digits after the decimal place (five digits for 700 MHz frequencies). The letter "U", "N", or "W" in the deviation (Dev) column reflects whether the frequency is ultranarrow (6.25 kHz), narrow (12.5 kHz) or wide band (25 kHz). Mode refers to either "A" indicating Analog, "D" indicating Digital (e.g. Project 25) or "M" indicating Mixed Mode. All channels are shown as if programmed in a control station, mobile or portable radio. Repeaters (and depending on use, base stations) must be programmed with the Rx and Tx reversed.

* For use during Initial Attack Response with State/Local resources

Communications Landline: Not yet assigned

SAFETY MESSAGE

LUNA FIRE NM-CAF-000631
October 24-25, 2020 0700-0700

- Pre-front winds are predicted, be prepared for large fire growth.
- Maintain LCES and continually re-evaluate. Assure that all personnel have good communications. If you aren't in position to see the fire, who is your lookout???
- Ensure your LCES is adequate for worst- case fire behavior.
- Maintain accountability of all personnel on the fire. No exceptions.

DRIVING: The local roads have many risks. They're narrow, winding and have blind curves. Local civilian drivers tend to drive fast and many seem to be in a big hurry. Give them space and let them pass if possible, Drive defensively, keep your speeds down. Please don't text and drive. **WEAR YOUR SEATBELT!**

ATV/UTV OPERATIONS: This fire is located in remote country with difficult access in many areas. ATV's & UTV's are excellent resources to help us gain access. All operators need to be agency qualified and helmets are mandatory for all operators and passengers. Please operate these vehicles safely and responsibly. Many potential mishaps with these vehicles can be greatly reduced by simply slowing your speeds.

COVID-19: Unfortunately, new cases of Covid-19 are still being diagnosed in NM as well as all the other states in the US. We all need to maintain our diligence with all of the recommended precautions and CDC guidelines. Facemasks are mandatory. Please maintain proper distancing and wash your hands often. Prior to each shift, all personnel need to conduct individual screenings using the Covid-19 Screening Tool that's included in every IAP.

AIRCRAFT OPERATIONS: All aircraft operations have inherent risks. Ensure a risk vs. gain evaluation is performed prior to requesting any missions involving aircraft. If you've requested helicopter for a mission, ensure the ground contact is monitoring the A/G frequency. Maintain positive comm's with the aircraft and stay well clear of all of the drops.

Look Up, Look Down, Look Around

***Look Up:** Check the sky for any weather changes such as building or approaching thunderstorms, wind shifts or increasing in speed. Watch for air operations and water drops. Look for snags.

***Look Down:** Watch your footing. Keep an eye out for rocks, snakes, bees nests and observe fine fuels on the ground.

*** Look Around** Check fuel loading in the area, general terrain, current fire behavior and ladder fuels. Is the fire activity picking up?

INCIDENT RISK ANALYSIS

LUNA FIRE

(ICS 215a) Day Shift

BR/ DIV	HAZARDOUS ACTIONS / CONDITIONS	MITIGATIONS / WARNINGS / REMEDIES
ALL	WEATHER	<ul style="list-style-type: none"> • Be aware of changing weather conditions. • Watch out for increasing heat, winds, and instability. • Anticipate increased fire behavior conditions. • Communicate any observed changes in weather and fire behavior. • "Base all actions on current and expected behavior of the fire."
ALL	FIRE BEHAVIOR	<ul style="list-style-type: none"> • Conduct thorough assessments before starting work. • Ensure LCES is in place. • Provide additional briefing on drought related fire behavior and areas of high concentration of hazard trees. • Increase the level of SA. • Provide additional briefing for new resources and maintain communications..
ALL	LINE CONSTRUCTION	<ul style="list-style-type: none"> • Follow the line construction protocols and safety precautions for direct and indirect line construction. • Watch footing and spacing between firefighters, especially those working below. • Make sure LCES is in place. • Follow the "Downhill Line Construction Checklist" on IRPG page 9. • Use caution when working above any personnel. • Evaluate necessity to send personnel in areas with limited access.
ALL	TRAFFIC HAZARDS AND DRIVING	<ul style="list-style-type: none"> • Practice "Defensive Driving" techniques. • Wildlife is a common hazard on the roadways, be prepared for it. • Use spotters when backing. • Always use headlights. • Use warning lights when working on roads or traveling in smoke. • Observe posted speed limits. • Use chock blocks and turn wheels into the hill. • Watch for rolling rocks and debris from hillsides.
ALL	COMMUNICATIONS	<ul style="list-style-type: none"> • Share your Situational Awareness (hazards, changes, etc.) to those who also have a need. • Radio Communications may be poor in some areas: use human repeaters as needed. • Ensure all personnel are familiar with the incident and the IAP communications plans. • Make sure all resources have radios cloned appropriately. • Ensure that non-agency resources understand radio use and procedures.
ALL	FATIGUE / COMPLACENCY	<ul style="list-style-type: none"> • Be alert for signs of heat stress and fatigue, take breaks as necessary. • HYDRATE before, during and after your shift. • Monitor ALL resources for level of fatigue. • Recognize the symptoms of heat stress and fatigue, and take action as necessary to provide rest and recovery. • Repeated assignments in the same area can lead to complacency making personnel more vulnerable to accidents. • Take steps (switching of assignments, training opportunities during slow periods, etc.) to maintain situational awareness for the duration of the incident
ALL	AIR OPERATIONS	<ul style="list-style-type: none"> • Do not plan on air resources for tactical support or medical transportation. • Refer to page 58, IRPG for directing bucket drops. • Ensure positive communication with all air resources.
ALL	HEAVY EQUIPMENT OPERATIONS	<ul style="list-style-type: none"> • Ensure communications are established with operators. • Ensure ground personnel have safety illumination, with light-sticks being the minimum. • Maintain a 50'-100' exclusion area around equipment. • In timber increase safety distance to 2 ½ times canopy height.
ALL	HAZARD / DANGER TREES	<ul style="list-style-type: none"> • Follow Hazard Tree Safety Guidelines (IRPG p.22-23). • Limit number of personnel around snags and their exposure time; fallers must be qualified for the trees being felled. • Be especially alert around snags during wind events. Large green trees can also be dangerous.
ALL	FIRING OPERATIONS	<ul style="list-style-type: none"> • Only personnel trained in the use of each device will be authorized to use firing equipment. • Ensure all personnel are aware of firing operation that may affect them. • Wear appropriate PPE. • Ensure aerial/ground ignition plans have been adequately developed and personnel are briefed.
ALL	ENVIRONMENTAL HAZARDS	<ul style="list-style-type: none"> • Keep alert for wildlife including, elk, deer, & rattlesnakes. Watch footing and hand placement around rocks. Use caution around gas and power lines. • It is hunting season, fire personnel may encounter hunters in the area. • Follow all CDC and Agency COVID 19 protocols including mandatory facemask usage, maintaining proper distancing and washing hands often.
<p>INCIDENT NAME:</p> <p>LUNA FIRE</p>		<p>Operational Period: 0700-0700 October 24-25, 2020</p> <hr/> <p>DATE AND TIME PREPARED: 15 October 23, 2020 1700 hours</p>

Wildland Fire COVID-19 Screening Tool

Interim Standard Operating Procedures – 4/15/2020

NOTE: This Screening Tool represents interim guidance. Additional clarification will be coming as soon as it is defined.

DO YOU HAVE ANY OF THESE SYMPTOMS?

Today or in the past 24 hours, have you had any of the following symptoms listed below, in addition to your normal work-related issues?

- Fever, felt feverish, or had chills? Repeated shaking with chills?
- Cough? Shortness of breath or difficulty breathing?
- Muscle pain? Headache? Sore throat?
- New loss of taste and/or smell?

If in doubt about any of these symptoms, consult a Physician.

In the past 14 days, have you had contact with a person known to be infected with the coronavirus (COVID-19)?

Take temperature with touchless thermometer if available

INSTRUCTIONS FOR SCREENING

- If resource is positive for any symptoms prior to mobilization **DO NOT MOBILIZE.**
- At Entries – Consider the adequate number of personnel needed for screening. Although medical personnel are ideal, screeners do not have to be medically trained.
 - o If resource is positive for any symptoms including fever (over 100.4) at entry **DO NOT ANNOUNCE-** ask to step aside.
 - o Escort sick individual to isolation area.
 - o Isolation support personnel should begin documentation. Have sick individual contact Supervisor for further direction.
 - o Notify public health officials.
 - o Have individual transported as appropriate.
 - o Protect and secure any collected Personal Identifiable Information or Personal Health Information.

FINANCE MESSAGE

AVAILABLE OPTIONS FOR SUBMITTING TIME:

Resources can submit time electronically (email below) or hard copy. There will be drop boxes for CTRs and shift tickets at Mora camp and at ICP. Documents will be picked up daily and transported to Finance.

If you opt to submit electronically you have a couple of options for submitting them to Finance:

Option 1- Resource fills out fillable PDF and submits to Supervisor for signature. Supervisor digitally signs PDF, sends signed copy back to Resource **AND** on to Finance.

Option 2 - Resource fills out fillable PDF, Supervisor (if comfortable) signs directly on the same device. Resource e-mails the PDF directly to Finance.

Option 3 – Resource can scan and email or take a picture and email a signed copy of CTR or Shift to finance.

Crews: please submit a copy of your manifest to Finance – it can be electronic or hard copy. Please note any AD crew members on the manifest with their position code and ECI number if known.

Single Resource ADs: Please submit your Single Resource Casual Hire form to Finance – it can be electronic or hard copy.

Cooperators: Please submit your agreement and resource order to Finance – either electronically or hard copy. Please don't skip any pages and assure that the signature page is shown.

Contractors: Please submit the finance portion of your contract/agreement and resource order to Finance – either electronically or hard copy. Please don't skip any pages and assure that the signature page is shown.

Please try to submit time at least every other day. You may choose from any of the options above as long as the copy we receive in finance is legible. What works best for you, will work for us

For questions regarding workers compensation or claims, contact the COMP unit leader below.

2020.luna.finance@firenet.gov

On subject line please put: Time, Request Number, Resource Name

Example: Time, O-329, Fork

Time, C-010, Crew Name

Any questions, please contact one of the following.

FINANCE CONTACTS:

Finance Chief:	Theresa Fork	530-251-3013
Time Unit Leader:	Maggie Prochazka	530-604-3290
Comp Unit Leader:	Elaine Downing	928-486-5295



Human Resource Message

HARASSMENT FREE WORKPLACE POLICY

The Forest Service strives for a harassment-free work environment where people treat on another with respect. Managers, supervisors, and all employees, as well as our contractors, cooperators and volunteers have the primary responsibility for creating and sustaining this harassment-free environment.

All employees, contractor personnel, and visitors must take personal responsibility for maintaining conduct that is professional and supportive. There is a zero tolerance for harassment based on race, national origin, religion, age, mental or physical disability, color, sex, or any other nonmerit factors.

Managers and supervisors must take immediate action to stop harassment (or any other inappropriate behavior), to protect the people targeted and to take all reasonable steps to ensure that no further harassment or retaliation occurs. Employees who witness harassment should report it to the proper authority.

WHAT HARASSMENT IS: Harassment is coercive or repeated, unsolicited, and unwelcome verbal comments, gestures or physical contacts and includes retaliation for confronting or reporting harassment. Some examples include but are not limited to the following: unwelcome touching, inappropriate references to body parts, derogatory or demeaning comments, jokes, or personal question, sexual innuendoes, inappropriate comments, or other verbal abuse.

Individuals who believe they are being harassed or retaliated against should exercise any one or more of the following options as soon as possible: Tell the harasser to stop the offensive conduct; and/or Tell a manager or supervisor about the conduct; and/or any other individual you trust who would act. In addition, you may seek help from the Human Resource Specialist on the incident.

Please let me know if I can be of assistance. I am located at the Mora Camp in the teachers lounge. You may reach me by calling **707-330-9939** or by email at: andrea.cabida@usda.gov. Although practicing social distancing, I will arrange an in-person meeting to discuss any concerns.

Andrea Cabida- HRSP





LUNA BASE CAMP
MORA HIGH SCHOOL
NM-518
Mora, NM 87732



Mora Magistrate Judge

SEC

Mora Independent Schools Adm

REFER

SUPPLY

CREW PARKING

Briefing

OVERHEAD PARKING

Overhead

CREW SLEEPING 1

OFF LIMITS

DAY SLEEPING

CREW SLEEPING 2

518

Presb. erian church

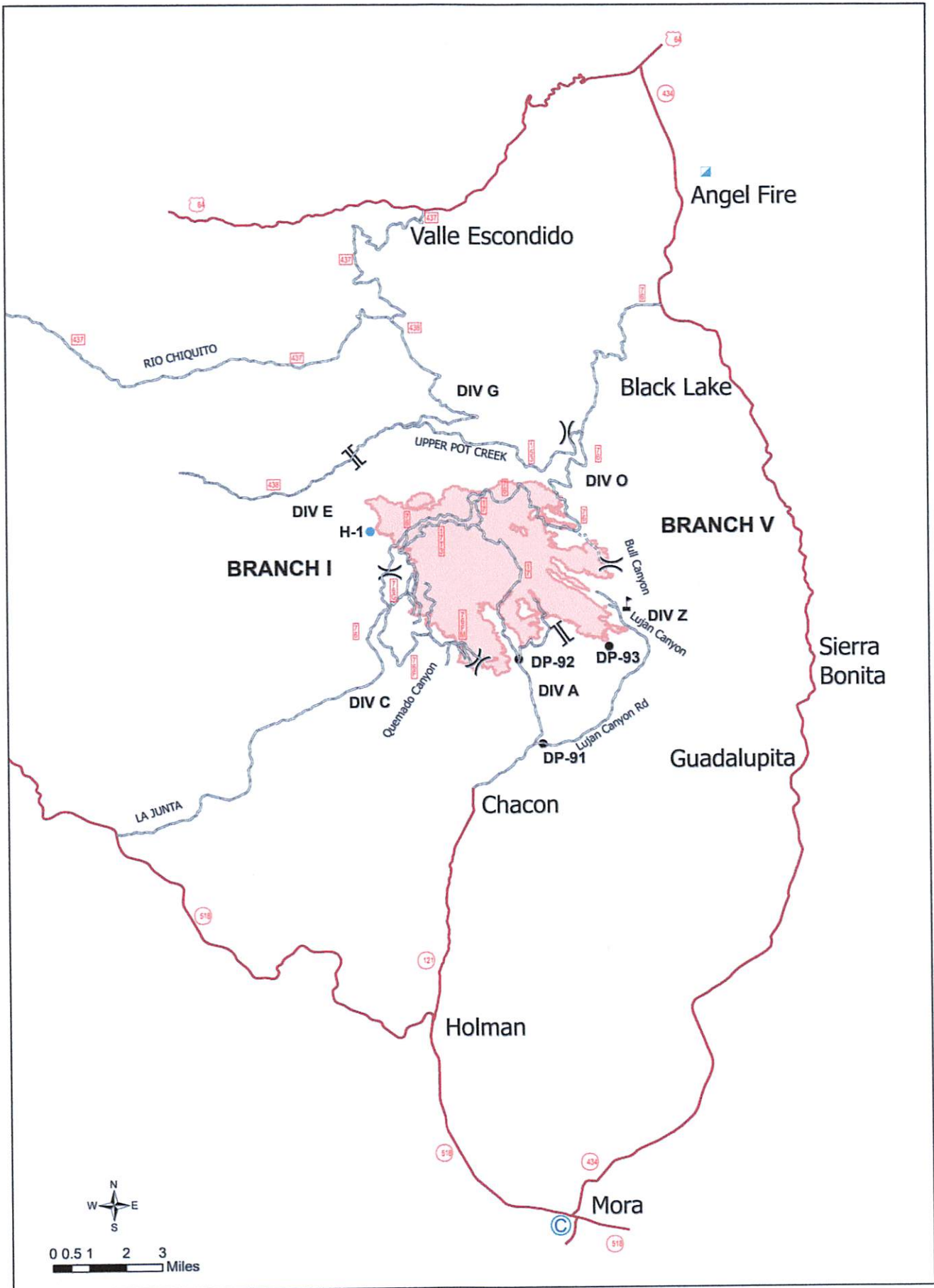
Mt Calvary Assembly of God

GROUND SUPPORT
HOLMAN SCHOOL
NM-518
Mora, NM 87732



Ground Support





10/23/2020 1906
Acres from IR and GPS
WGS 1984 Datum, Lat,Long Grid

- Highway
- - - - Road - 4WD
- Road - Light Duty - Dirt
- Road - Light Duty - Gravel
- Camp
- Drop Point
- Helispot
- ▲ Incident Command Post
- ⚠ Value at Risk
-) Division Break
- || Branch Break
- Wildfire Daily Fire Perimeter

Transportation
Luna
NM-CAF-000631
10/24/2020
9,736 acres at 10/22/2020 2246

Luna Fire Incident Training Program

A TNSP is assigned to this incident and will be performing duties "virtually".

To receive documented credit for your assignment, scan the QR Code below to access and complete the Trainee Registration Form. Once registered you will receive additional instructions via text. For training related questions, call Brad Smith (TNSP) at 209-770-4809 or email bradley_smith@firenet.gov



[Training Assignment Registration](#)

LINE ORDER FORM

ORDER #	DATE & TIME ORDERED Received from the Line	WHO PLACED ORDER DIVS, OPS, etc...	DELIVER to (DIV, Helispot, DP, etc.) Division, Heli-Spot, Drop Point, etc.	MODE of DELIVERY Drive, Helo, pick-up			
Order Received in Communications By:				TIME:			
Communications Relayed/Placed the Order To:				TIME:			
Order Shipped to the Line By (Name):				TIME:			
ITEM#	DESCRIPTION			AMOUNT			
1	1,000 Foot Hose Lay: Includes the following 10 lengths, 1 1/2" x 100' Hose. 10 lengths, 1" x 100' Hose. 10ea. 1 1/2" Gated Wyes. 10ea. 1 1/2" to 1" Reducers. 10ea. 1" Nozzles.						
2	2,000 Foot Hose Lay: Includes the following 20 lengths, 1 1/2" x 100' Hose. 20 lengths, 1" x 100' Hose. 20ea. 1 1/2" Gated Wyes. 20ea. 1 1/2" to 1" Reducers. 20ea. 1" Nozzles.						
3	3,000 Foot Hose Lay: Includes the following 30 lengths, 1 1/2" x 100' Hose. 30 lengths, 1" x 100' Hose. 30ea. 1 1/2" Gated Wyes. 30ea. 1 1/2" to 1" Reducers. 30ea. 1" Nozzles.						
ITEM#	REQUESTED ITEM	NFES#	AMOUNT	ITEM#	REQUESTED ITEM	NFES#	AMOUNT
4	Backpack Pump, 5 gallon	1149		26	Batteries, "AA", (package)	0030	
5	Foam, 5 gallon	1145		27	Gasoline, Unleaded (gallon)		
6	Hose, 3/4 inch, 50 ft. length	1016		28	Oil, 2 Cycle Mix (quart)	0341	
7	Hose, 1 inch, 100 ft. length	0966		29	Diesel, straight (gallon)		
8	Hose, 1 1/2 inch, 100 ft. length	0967		30	Oil, Bar & Chain (gallon)	1880	
9	Increaser, 3/4" to 1"	2235		31	Fusees (box)	0105	
10	Increaser, 1" to 1 1/2"	0416		32	Torch, Drip Torch ea.	0241	
11	Nozzle, Garden 3/4 inch	0136		33	Mix, Drip Torch 3-1, 5 gal.		
12	Nozzle, Forester, 1"	0024		34	Flagging, Ribbon, Color/Roll		
13	Nozzle, KK Type, 1"	1081		35	Washcloth, Waterless	0206	
14	Nozzle, KK Type, 1 1/2"	1082		36	Water, Cubi, 5 gallon ea.	0048	
15	Reducer, 1" to 3/4"	0733		37	Water, Bottled, (case)		
16	Reducer, 1 1/2" to 1"	0009		38	Sports Drink, Gatorade (case)		
17	Tee, Hoseline, 1"x1"x 3/4"	1809		39	Food, MRE's (12 per Box)	1842	
18	Tee, Hoseline, 1"x1"x 1"	2240		40	Pump Kit, High Pressure	0870	
19	Tee, Hoseline, 1 1/2" x 1 1/2" x 1"	0230		41	Pump, High Pressure	0148	
20	Wye, Gated, 3/4" inch	0904		42	Pump Kit, Light Weight	0670	
21	Wye, Gated, 1"	0259		43	Sprinkler Kit	1048	
22	Wye, Gated, 1 1/2"	0231		44	Pump Kit, Volume	6041	
23	Tank, Collapsible. Capacity Gallons?			45	Mop-Up Kit	0772	
24	Tank, Folding/Frame. Capacity ??						
25	Wrap, Structure (roll)	0881					

Date and Time Needed: _____ Point of Contact at Delivery Location: _____



OTHER / NOTES:

LINE ORDER FORM

ORDER #	DATE & TIME ORDERED Received from the Line	WHO PLACED ORDER DIVS, OPS, etc...	DELIVER to (DIV, Helispot, DP, etc.) Division, Heli-Spot, Drop Point, etc.	MODE of DELIVERY Drive, Helo, pick-up			
Order Received in Communications By:				TIME:			
Communications Relay/Placed the Order To:				TIME:			
Order Shipped to the Line By (Name):				TIME:			
ITEM#	DESCRIPTION			AMOUNT			
1	1,000 Foot Hose Lay: Includes the following 10 lengths, 1 1/2" x 100' Hose. 10 lengths, 1" x 100' Hose. 10ea. 1 1/2" Gated Wyes. 10ea. 1 1/2" to 1" Reducers. 10ea. 1" Nozzles.						
2	2,000 Foot Hose Lay: Includes the following 20 lengths, 1 1/2" x 100' Hose. 20 lengths, 1" x 100' Hose. 20ea. 1 1/2" Gated Wyes. 20ea. 1 1/2" to 1" Reducers. 20ea. 1" Nozzles.						
3	3,000 Foot Hose Lay: Includes the following 30 lengths, 1 1/2" x 100' Hose. 30 lengths, 1" x 100' Hose. 30ea. 1 1/2" Gated Wyes. 30ea. 1 1/2" to 1" Reducers. 30ea. 1" Nozzles.						
ITEM#	REQUESTED ITEM	NFES#	AMOUNT	ITEM#	REQUESTED ITEM	NFES#	AMOUNT
4	Backpack Pump, 5 gallon	1149		26	Batteries, "AA", (package)	0030	
5	Foam, 5 gallon	1145		27	Gasoline, Unleaded (gallon)		
6	Hose, 3/4 inch, 50 ft. length	1016		28	Oil, 2 Cycle Mix (quart)	0341	
7	Hose, 1 inch, 100 ft. length	0966		29	Diesel, straight (gallon)		
8	Hose, 1 1/2 inch, 100 ft. length	0967		30	Oil, Bar & Chain (gallon)	1880	
9	Increaser, 3/4" to 1"	2235		31	Fusees (box)	0105	
10	Increaser, 1" to 1 1/2"	0416		32	Torch, Drip Torch ea.	0241	
11	Nozzle, Garden 3/4 inch	0136		33	Mix, Drip Torch 3-1, 5 gal.		
12	Nozzle, Forester, 1"	0024		34	Flagging, Ribbon, Color/Roll		
13	Nozzle, KK Type, 1"	1081		35	Washcloth, Waterless	0206	
14	Nozzle, KK Type, 1 1/2"	1082		36	Water, Cubi, 5 gallon ea.	0048	
15	Reducer, 1" to 3/4"	0733		37	Water, Bottled, (case)		
16	Reducer, 1 1/2" to 1"	0009		38	Sports Drink, Gatorade (case)		
17	Tee, Hoseline, 1"x1"x 3/4"	1809		39	Food, MRE's (12 per Box)	1842	
18	Tee, Hoseline, 1"x1"x 1"	2240		40	Pump Kit, High Pressure	0870	
19	Tee, Hoseline, 1 1/2" x 1 1/2" x 1"	0230		41	Pump, High Pressure	0148	
20	Wye, Gated, 3/4" inch	0904		42	Pump Kit, Light Weight	0670	
21	Wye, Gated, 1"	0259		43	Sprinkler Kit	1048	
22	Wye, Gated, 1 1/2"	0231		44	Pump Kit, Volume	6041	
23	Tank, Collapsible. Capacity Gallons?			45	Mop-Up Kit	0772	
24	Tank, Folding/Frame. Capacity ??						
25	Wrap, Structure (roll)	0881					

Date and Time Needed: _____ Point of Contact at Delivery Location: _____

OTHER / NOTES:

MEDICAL PLAN	1. INCIDENT NAME: Luna Fire	2. DATE PREPARED: October,23, 2020	3. TIME PREPARED: 1600	4. OPERATIONAL PERIOD 10/24/20-10/25/20 0700-0700			
5. INCIDENT MEDICAL AID STATIONS							
MEDICAL AID STATIONS	LOCATION		ALS				
			YES	NO			
Wilderness Medics Medical Unit Trailer	Mora Base Camp		XX				
6. TRANSPORTATION							
A. Ambulance Services							
NAME	LOCATION	PHONE	ALS				
			YES	NO			
AMBO 4 Rio Rancho FD	Branch Resource, Staged at DP-91	Command	XX				
B. AIR AMBULANCE							
NAME	LOCATION	ALS	BLS				
Taos Dispatch Center	(575) 758-6208						
Careflight-16	Taos	XX					
Lifeguard	Albuquerque	XX					
National Guard (Hoist)	Albuquerque	XX					
7. HOSPITALS							
NAME	ADDRESS	TRAVEL TIME	PHONE	TRAUMA	HELIPAD	BURN CENTER	
		AIR GRND		Yes No	Yes No	Yes	No
UNM Hospital	2211 Lomas Blvd. NE Albuquerque, NM. 87106 35°05. 2790'N, 106°37.1151'W		(505) 272-2111	L-1	XX		XX
Holy Cross Hospital	1397 Weimer Rd. Taos, NM 87571. 36°22.0618' N, 105°34.6448' W		(575) 751-5835	L-4	XX		XX
Alta Vista Regional	104 Legion Dr. Las Vegas NM 87701		(505) 426-3502		XX		XX
8. MEDICAL EMERGENCY PROCEDURES							
LINE "MEDICAL-EMERGENCY" PLAN: - Crew Supervisor to contact Division Supervisor/Operations with: <ul style="list-style-type: none"> Patient Complaint, Condition and Location via Tactical or Command frequency. Priority 1/Red- life threatening emergency trigger Incident within Incident (IWI). - Division Supervisor/Operation contacts Taos Dispatch Center: <ul style="list-style-type: none"> Division Supervisor or POC* will run "Medical –Emergency" on the Command frequency. Division Supervisor of POC* to use "Medical Incident Report" worksheet on page 118-119 of the IRPG. POC* (Point of Contact) and/or Operations				LINE "NON-EMERGENCY INCIDENT" PLAN: - Crew Supervisor to contact Division Supervisor with: <ul style="list-style-type: none"> Patient Complaint, Condition and Location via Tactical or Command frequency. Priority 2/Yellow and Priority 3/Green Patients do not trigger Incident within Incident (IWI). - Division Supervisor contacts Communications: <ul style="list-style-type: none"> Division Supervisor or POC* will run "Non-Emergency Incident" on the Command frequency. Division Supervisor or POC* will use "Medical Incident Report" worksheet on page 118 -119 of the IRPG. IN-CAMP – 24 HOUR MEDICAL <ul style="list-style-type: none"> Contact Taos Dispatch Center (575) 758-6208 			
9. PREPARED BY MEDL – Jeff Carlon 				10. REVIEWED BY SOF1- Brian Savage 			

Medical Incident Report

FOR A **NON-EMERGENCY INCIDENT**: WORK THROUGH CHAIN OF COMMAND TO REPORT AND TRANSPORT INJURED PERSONNEL AS NECESSARY.

FOR A **MEDICAL EMERGENCY**: IDENTIFY ON SCENE INCIDENT COMMANDER BY NAME AND POSITION AND ANNOUNCE **"MEDICAL EMERGENCY"** TO INITIATE RESPONSE FROM COMMUNICATIONS

Use the following items to communicate situation to communications/dispatch.

1. CONTACT COMMUNICATIONS / DISPATCH (Verify correct frequency prior to starting report)
Ex: "Communications, Div. Alpha. Stand-by for Emergency Traffic."

2. INCIDENT STATUS: *Provide incident summary (including number of patients) and command structure.*
Ex: "Communications, I have a Red priority patient, unconscious, struck by a falling tree. Requesting air ambulance to Forest Road 1 at (Lat./Long.) This will be the Trout Meadow Medical Incident, IC is TFLD Jones. EMT Smith is providing medical care."

Severity of Emergency AND Transport Priority (priority 1, 2, 3)	<input type="checkbox"/> RED / PRIORITY 1 Life or limb threatening injury or illness. Evacuation need is IMMEDIATE <i>Ex: Unconscious, difficulty breathing, bleeding severely, 2° – 3° burns more than 4 palm sizes, heat stroke, disoriented.</i>	
	<input type="checkbox"/> YELLOW / PRIORITY 2 Serious Injury or illness. Evacuation may be DELAYED if necessary. <i>Ex: Significant trauma, unable to walk, 2° – 3° burns not more than 1-3 palm sizes.</i>	
	<input type="checkbox"/> GREEN / PRIORITY 3 Minor Injury or illness. Non-Emergency transport <i>Ex: Sprains, strains, minor heat-related illness.</i>	
Nature of Injury or Illness & Mechanism of Injury		<i>Brief Summary of Injury or Illness (Ex: Unconscious, Struck by Falling Tree)</i>
Transport Request		<i>Air Ambulance / Short Haul/Hoist Ground Ambulance / Other</i>
Patient Location		<i>Descriptive Location & Lat. / Long. (WGS84)</i>
Incident Name		<i>Geographic Name + "Medical" (Ex: Trout Meadow Medical)</i>
On-Scene Incident Commander		<i>Name of on-scene IC of Incident within an Incident (Ex: TFLD Jones)</i>
Crew Patient Care		<i>Name of Care Provider (Ex: EMT Smith)</i>

3. INITIAL PATIENT ASSESSMENT: *Complete this section for each patient as applicable (start with the most severe patient)*

Agency Affiliation: (NO PATIENT NAMES) Federal Contractor Local Government

Patient Assessment: Age: Weight: Chief Complaint:

(If pertinent to Injury) Skin Signs: (color/moisture/temp) Level of Consciousness: BP: HR: Respirations:

Treatment:

4. TRANSPORT PLAN:

Evacuation Location (*drop point, intersection, helispot, Lat. / Long, hazards*) Patient's ETA to Location:

5. ADDITIONAL RESOURCES / EQUIPMENT NEEDS:

Paramedic / EMT - Crews - Immobilization Devices - AED - Oxygen - Trauma Bag - IV/Fluid(s) - Splints - Rope rescue - Wheeled litter - HAZMAT - Extrication

6. COMMUNICATIONS: Identify State Air/Ground EMS Frequencies and Hospital Contacts as applicable

Function	Channel Name/Number	Receive (RX)	Tone/NAC *	Transmit (TX)	Tone/NAC *
COMMAND					
AIR-TO-GRND					

7. CONTINGENCY: Considerations: *If primary options fail, what actions can be implemented in conjunction with primary evacuation method? Be thinking ahead.*

8. ADDITIONAL INFORMATION: *Updates/Changes, etc.*

REMEMBER: Confirm ETA's of resources ordered. Act according to your level of training. Be Alert - Keep Calm - Think Clearly - Act Decisively

*** Follow up with MEDL upon return to ICP ***