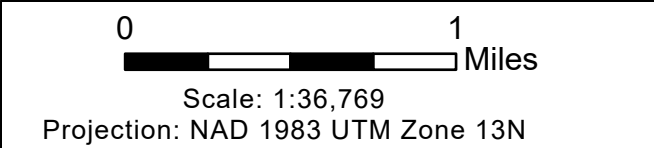
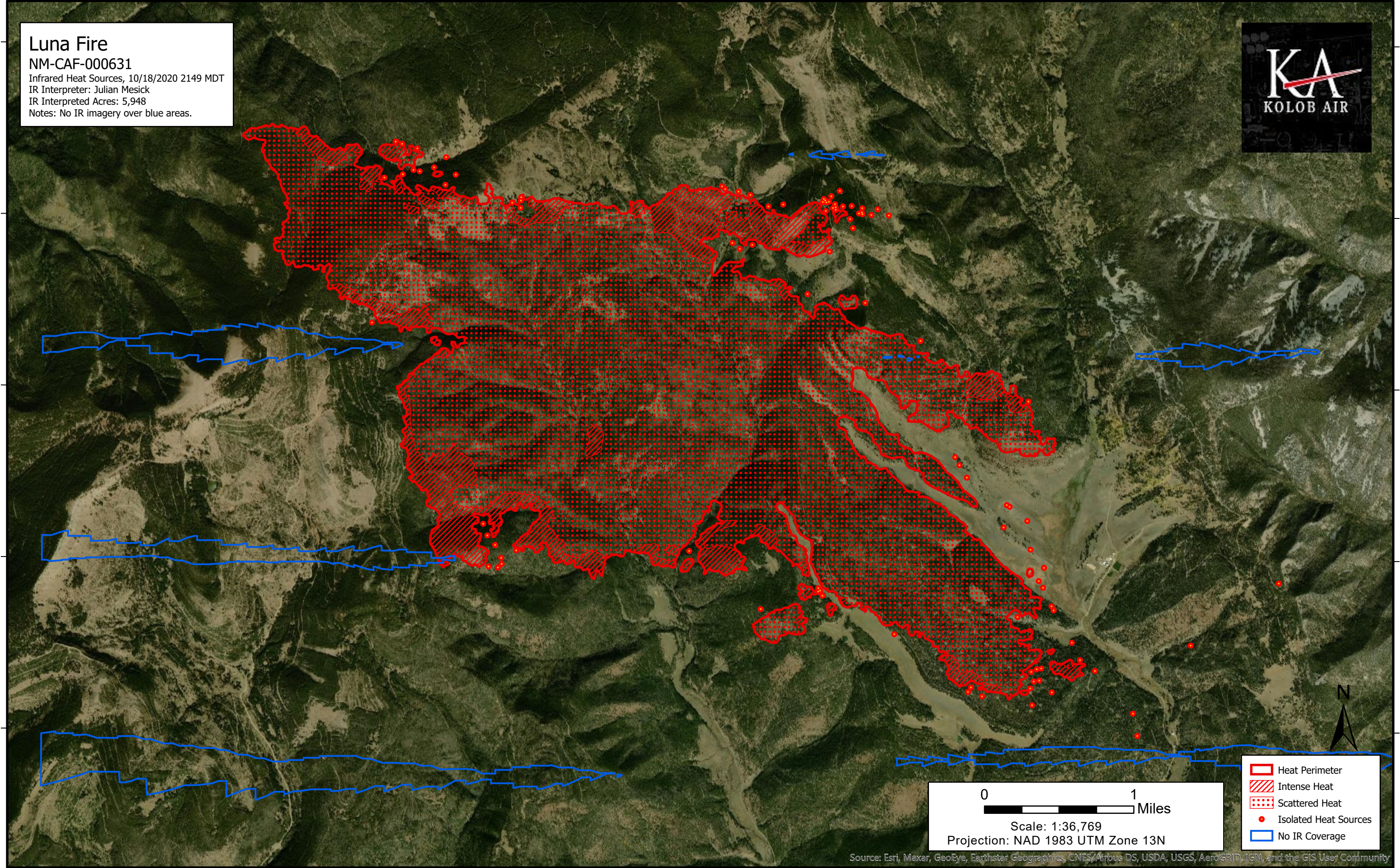


105°26'W 105°25'W 105°24'W 105°23'W 105°22'W 105°21'W 105°20'W 105°19'W 105°18'W 105°17'W

36°16'N
36°15'N
36°14'N
36°13'N
36°12'N

36°16'N
36°15'N
36°14'N
36°13'N
36°12'N

Luna Fire
NM-CAF-000631
Infrared Heat Sources, 10/18/2020 2149 MDT
IR Interpreter: Julian Mesick
IR Interpreted Acres: 5,948
Notes: No IR imagery over blue areas.



- Heat Perimeter
- Intense Heat
- Scattered Heat
- Isolated Heat Sources
- No IR Coverage



Source: Esri, Maxar, GeoEye, Earthstar Geographics, CNES/Airbus DS, USDA, USGS, AeroGRID, IGN, and the GIS User Community

105°26'W 105°25'W 105°24'W 105°23'W 105°22'W 105°21'W 105°20'W 105°19'W 105°18'W 105°17'W