

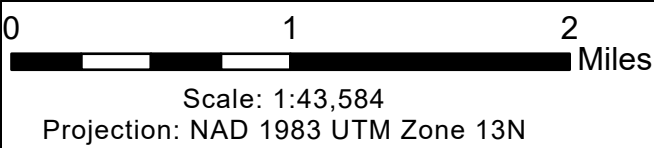
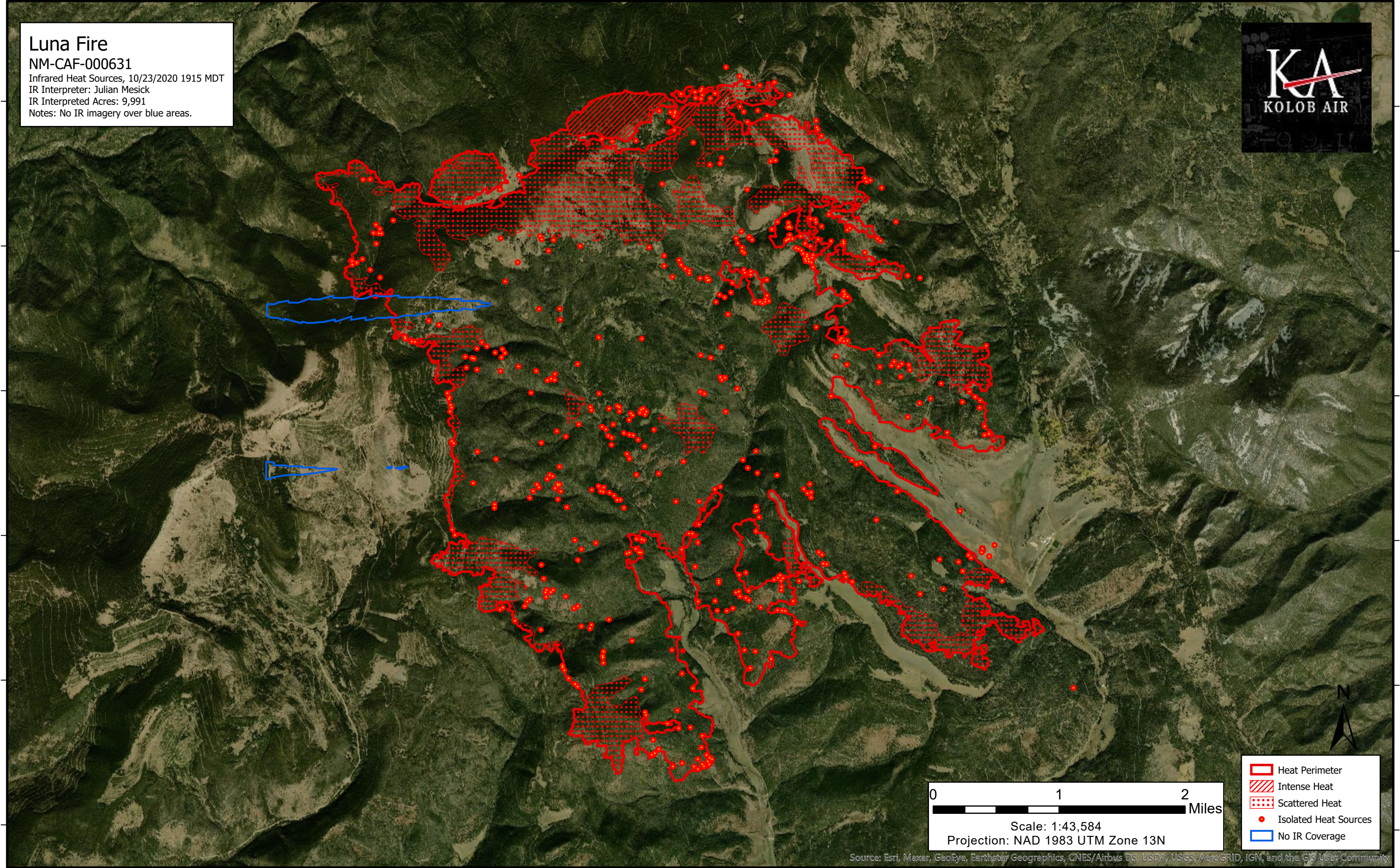
105°27'W 105°26'W 105°25'W 105°24'W 105°23'W 105°22'W 105°21'W 105°20'W 105°19'W 105°18'W 105°17'W 105°16'W

**Luna Fire**  
NM-CAF-000631  
Infrared Heat Sources, 10/23/2020 1915 MDT  
IR Interpreter: Julian Mesick  
IR Interpreted Acres: 9,991  
Notes: No IR imagery over blue areas.



36°16'N  
36°15'N  
36°14'N  
36°13'N  
36°12'N  
36°11'N

36°16'N  
36°15'N  
36°14'N  
36°13'N  
36°12'N  
36°11'N



- Heat Perimeter
- Intense Heat
- Scattered Heat
- Isolated Heat Sources
- No IR Coverage



Source: Esri, Maxar, GeoEye, Earthstar Geographics, CNES/Airbus DS, USDA, USGS, AeroGRID, IGN, and the GIS User Community