

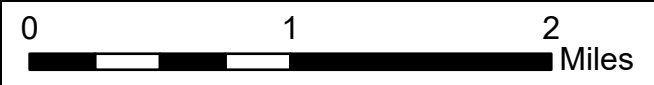
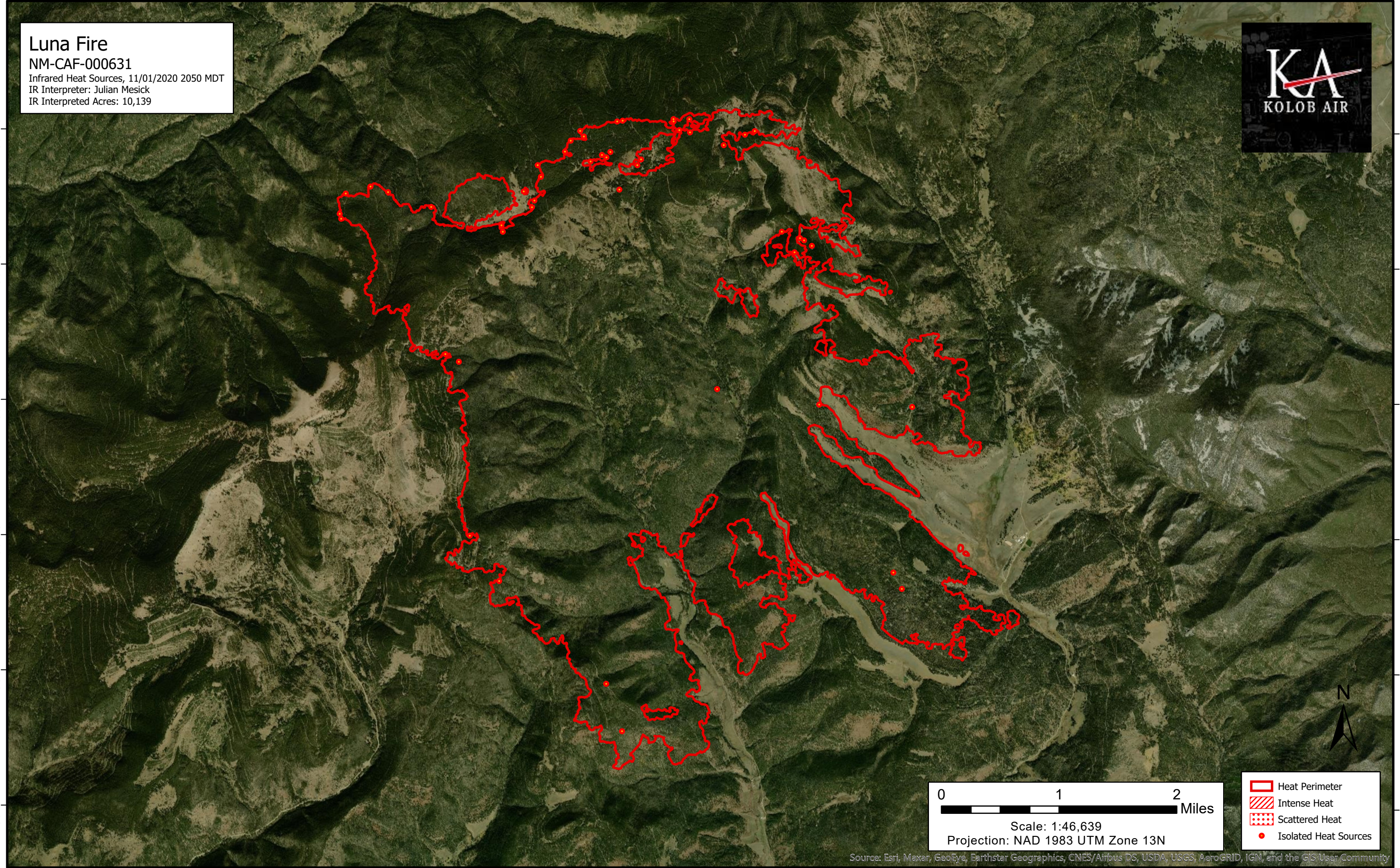
105°27'W 105°26'W 105°25'W 105°24'W 105°23'W 105°22'W 105°21'W 105°20'W 105°19'W 105°18'W 105°17'W 105°16'W 105°15'W

**Luna Fire**  
NM-CAF-000631  
Infrared Heat Sources, 11/01/2020 2050 MDT  
IR Interpreter: Julian Mesick  
IR Interpreted Acres: 10,139



36°16'N  
36°15'N  
36°14'N  
36°13'N  
36°12'N  
36°11'N

36°16'N  
36°15'N  
36°14'N  
36°13'N  
36°12'N  
36°11'N



Scale: 1:46,639  
Projection: NAD 1983 UTM Zone 13N

- Heat Perimeter
- Intense Heat
- Scattered Heat
- Isolated Heat Sources



Source: Esri, Maxar, GeoEye, Earthstar Geographics, CNES/Airbus DS, USDA, USGS, AeroGRID, IGN, and the GIS User Community

105°27'W 105°26'W 105°25'W 105°24'W 105°23'W 105°22'W 105°21'W 105°20'W 105°19'W 105°18'W 105°17'W 105°16'W 105°15'W