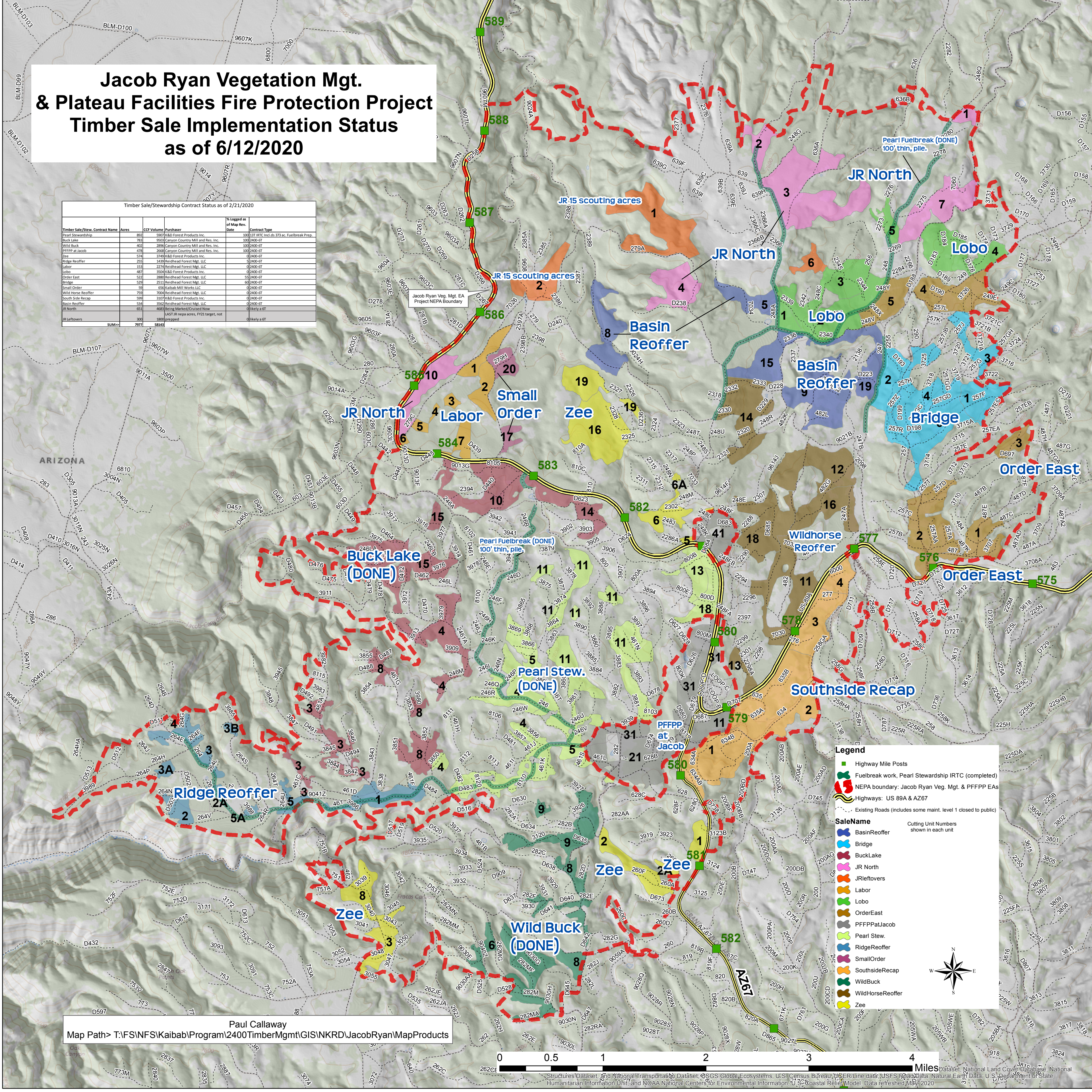


Jacob Ryan Vegetation Mgt.
& Plateau Facilities Fire Protection Project
Timber Sale Implementation Status
as of 6/12/2020

| Timber Sale/Stewardship Contract Status as of 2/21/2020 | | | | |
|---|-------|------------|-----------------------------------|------------------------------|
| Timber Sale/Stew. Contract Name | Acres | CCF Volume | Purchaser | % Logged as of Map Rev. Date |
| Pearl Stewardship | 8713 | 5907 | K&O Forest Products Inc. | 100 |
| Buck Lake | 783 | 9503 | Canyon Country Mill and Res. Inc. | 100 |
| Wild Buck | 402 | 2896 | Canyon Country Mill and Res. Inc. | 100 |
| PFFPP at Jacob | 478 | 2628 | Canyon Country Mill and Res. Inc. | 100 |
| Zee | 574 | 3749 | K&O Forest Products Inc. | 100 |
| Ridge Reoffer | 225 | 1439 | Reidhead Forest Mgt. LLC | 100 |
| Labor | 153 | 2274 | Reidhead Forest Mgt. LLC | 100 |
| Lobo | 487 | 3504 | K&O Forest Products Inc. | 100 |
| Order East | 522 | 2886 | Reidhead Forest Mgt. LLC | 100 |
| Bridge | 529 | 2511 | Reidhead Forest Mgt. LLC | 100 |
| Small Order | 59 | 656 | Kaibab Mill Works LLC | 100 |
| Wild Horse Reoffer | 759 | 7004 | Reidhead Forest Mgt. LLC | 100 |
| South Side Recap | 534 | 3107 | K&O Forest Products Inc. | 100 |
| Basin Reoffer | 534 | 3952 | Reidhead Forest Mgt. LLC | 100 |
| JR North | 651 | 4683 | Bring Marked/Cruised Now | 0 |
| JR Leftovers | 300 | 1803 | prepped | 0 |
| SUM--> | 7971 | 5845 | | |



Paul Callaway
Map Path> T:\FS\NFS\Kaibab\Program\2400TimberMgmt\GIS\NKR\JacobRyan\MapProducts

0 0.5 1 2 3 4 Miles

Structures Dataset, and National Transportation Dataset, USGS Global Ecosystems, U.S. Census Bureau, TIGER/Line data, USFS Road Data, Natural Earth Data, U.S. Department of State, Humanitarian Information Unit, and NOAA National Centers for Environmental Information, U.S. Coastal Relief Model, Data refreshed 1/8/2020.