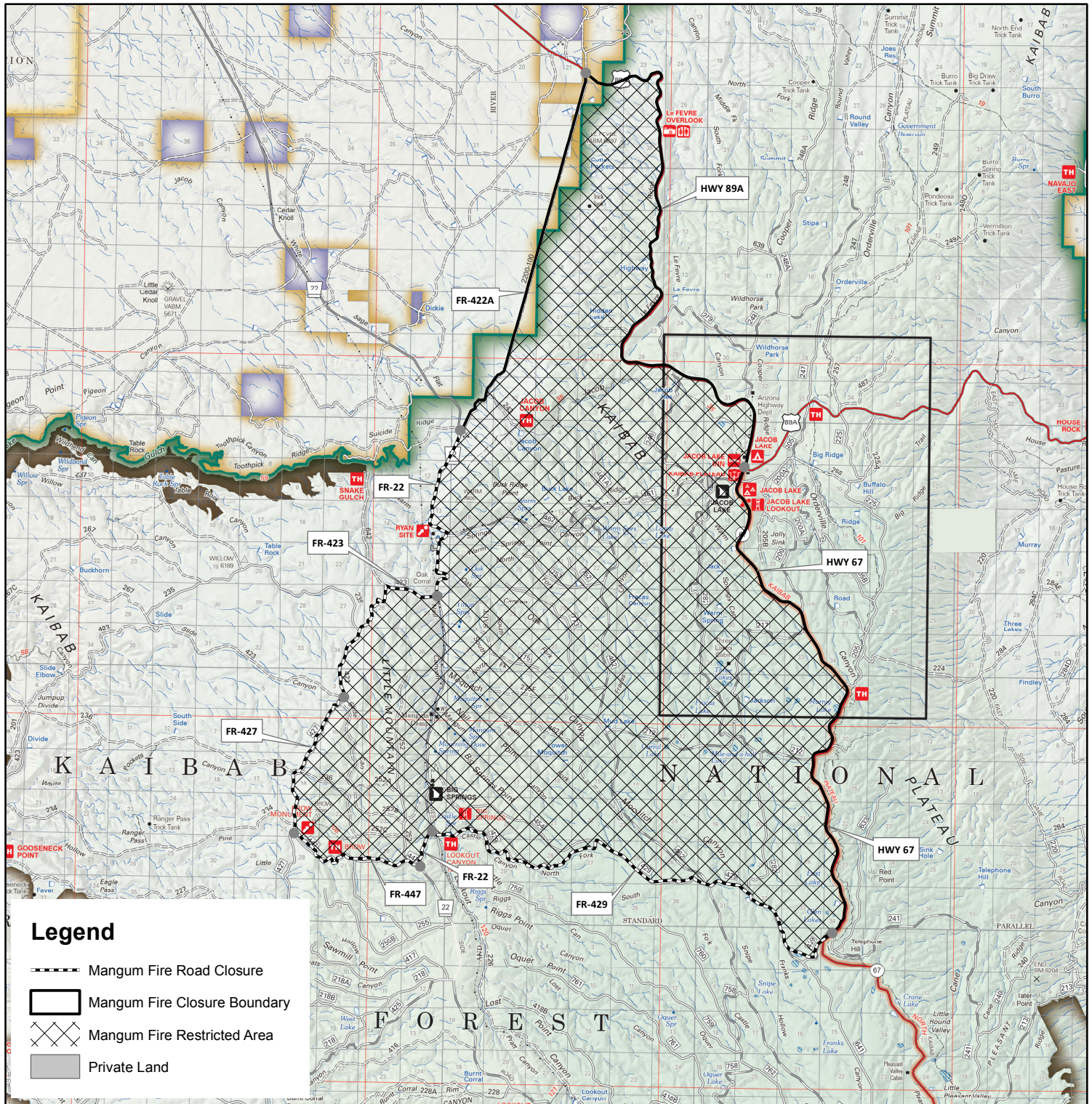




# Magnum Fire Area Closure Map

## Order Number: 03-07-20-07, Exhibit A

### Kaibab National Forest - North Kaibab Ranger District



#### Disclaimer

The USDA Forest Service uses the most current and complete data available. GIS data and product accuracy may vary. Using GIS products for purposes other than those for which they were intended may yield inaccurate or misleading results. The USDA Forest Service reserves the right to correct, update, modify, or replace GIS products without notification. This map is not a legal land line or ownership document. Public lands are subject to change and leasing, and may have access restrictions; check with local offices. Obtain permission before entering private land.

Note: HWY 67, HWY 89 A, and FR-422A will remain open. The remaining roads forming the Restricted Area boundary are closed to the public:  
 FR-22, between the junctions of FR-422A and FR-423,  
 FR-423 between its junctions with FR-22 and FR-427,  
 FR-427 between its junction with FR-423 and FR-447  
 FR-447 between its junction with FR-427 and FR-22,  
 FR-22 between its junctions with FR-447 and FR-429,  
 FR 429 between its junctions with FR22 HWY 67.



ARIZONA

