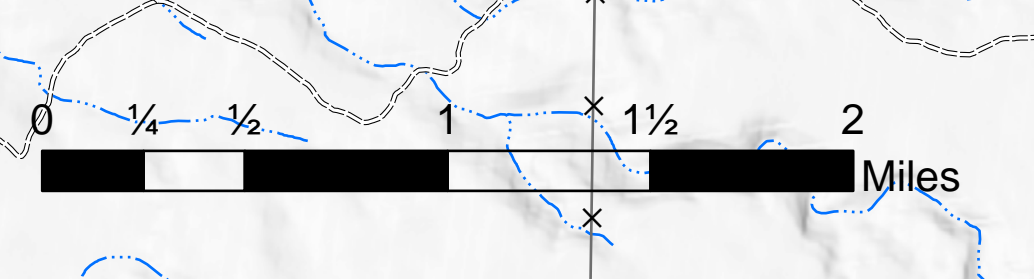


Air Operations Map

Mangum

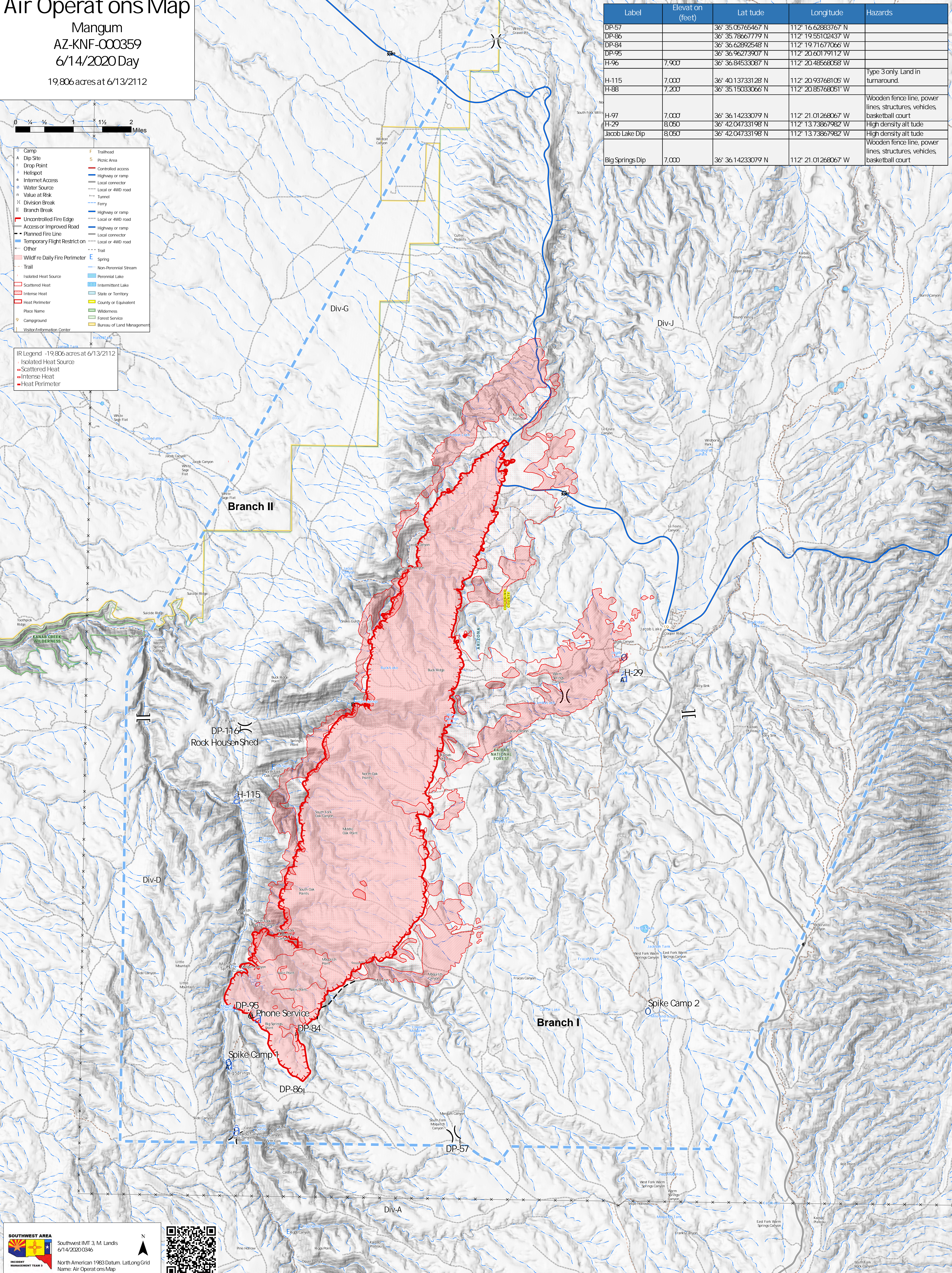
AZ-KNF-000359
6/14/2020 Day
19,806 acres at 6/13/2112



- Camp
- ▲ Dip Site
- Drop Point
- Heliport
- Internet Access
- Water Source
- Value at Risk
- || Division Break
- || Branch Break
- Uncontrolled Fire Edge
- Access or Improved Road
- Planned Fire Line
- Temporary Flight Restrict on
- Other
- Wildfire Daily Fire Perimeter
- Trail
- Isolated Heat Source
- Scattered Heat
- Intense Heat
- Heat Perimeter
- Place Name
- Campground
- Visitor Information Center
- Trailhead
- Picnic Area
- Controlled access
- Highway or ramp
- Local connector
- Local or 4WD road
- Tunnel
- Ferry
- Highway or ramp
- Local or 4WD road
- Highway or ramp
- Local connector
- Local or 4WD road
- Trail
- Spring
- Non-Perennial Stream
- Perennial Lake
- Intermittent Lake
- State or Territory
- County or Equivalent
- Wilderness
- Forest Service
- Bureau of Land Management

- IR Legend -19,806 acres at 6/13/2112
- Isolated Heat Source
 - Scattered Heat
 - Intense Heat
 - Heat Perimeter

Label	Elevat on (feet)	Lat tude	Longitude	Hazards
DP-57		36° 35.05765467 N	112° 16.62883767 W	
DP-86		36° 35.78667779 N	112° 19.55102437 W	
DP-84		36° 36.62892548 N	112° 19.71677066 W	
DP-95		36° 36.96273907 N	112° 20.60179112 W	
H-96	7,900	36° 36.84533087 N	112° 20.48568058 W	
H-115	7,000	36° 40.13733128 N	112° 20.93768105 W	Type 3 only. Land in turnaround.
H-88	7,200	36° 35.15033066 N	112° 20.85768061 W	Wooden fence line, power lines, structures, vehicles, basketball court
H-97	7,000	36° 36.14233079 N	112° 21.01268067 W	Wooden fence line, power lines, structures, vehicles, basketball court
H-29	8,050	36° 42.04733198 N	112° 13.73867982 W	High density alt tude
Jacob Lake Dip	8,050	36° 42.04733198 N	112° 13.73867982 W	High density alt tude
Big Springs Dip	7,000	36° 36.14233079 N	112° 21.01268067 W	Wooden fence line, power lines, structures, vehicles, basketball court



SOUTHWEST AREA
Southwest IMT 3, M. Landis
6/14/2020 0346

North American 1983 Datum, Lat/Long Grid
Name: Air Operations Map

112° 25'W 112° 24'5W 112° 24'W 112° 23'5W 112° 23'W 112° 22'5W 112° 22'W 112° 21'5W 112° 21'W 112° 20'5W 112° 20'W 112° 19'5W 112° 19'W 112° 18'5W 112° 18'W 112° 17'5W 112° 17'W 112° 16'5W 112° 16'W 112° 15'5W 112° 15'W 112° 14'5W 112° 14'W 112° 13'5W 112° 13'W 112° 12'5W 112° 12'W 112° 11'5W 112° 11'W 112° 10'5W 112° 10'W 112° 9'5W 112° 9'W 112° 8'5W 112° 8'W