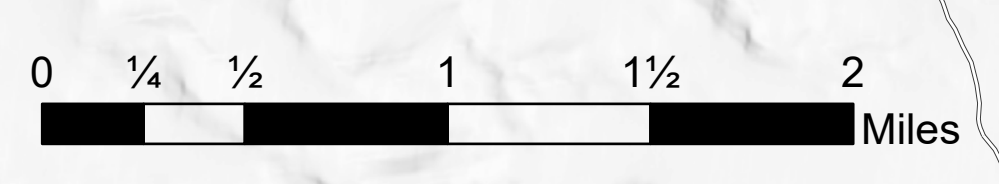


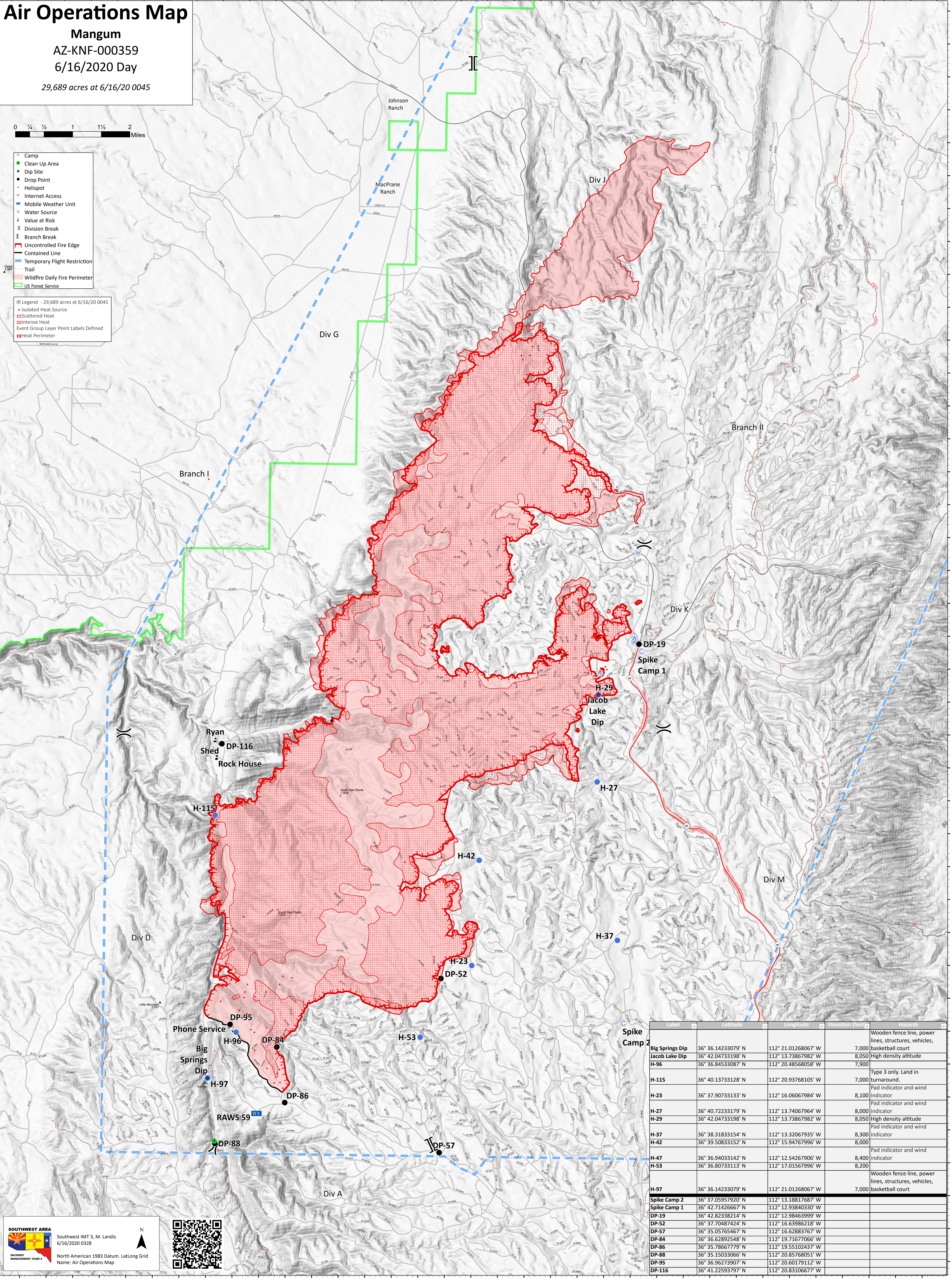
# Air Operations Map

**Mangum**  
 AZ-KNF-000359  
 6/16/2020 Day  
 29,689 acres at 6/16/20 0045



- Camp
- Clean Up Area
- Dip Site
- Drop Point
- Helispot
- Internet Access
- Mobile Weather Unit
- Water Source
- Value at Risk
- Division Break
- Branch Break
- Uncontrolled Fire Edge
- Contained Line
- Temporary Flight Restriction
- Trail
- Wildfire Daily Fire Perimeter
- US Forest Service

- IR Legend - 29,689 acres at 6/16/20 0045
- Isolated Heat Source
  - Scattered Heat
  - Intense Heat
  - Event Group Layer Point Labels Defined
  - Heat Perimeter



Label	Latitude	Longitude	Elevation (feet)	Hazards
Big Springs Dip	36° 36.14233079' N	112° 21.01268067' W	7,000	Wooden fence line, power lines, structures, vehicles, basketball court
Jacob Lake Dip	36° 42.04733198' N	112° 13.73867982' W	8,050	High density altitude
H-96	36° 36.84533087' N	112° 20.48568058' W	7,900	
H-115	36° 40.13733128' N	112° 20.93768105' W	7,000	Type 3 only. Land in turnaround.
H-23	36° 37.90733133' N	112° 16.06067984' W	8,100	Pad indicator and wind indicator
H-27	36° 40.72233179' N	112° 13.74067964' W	8,000	Pad indicator and wind indicator
H-29	36° 42.04733198' N	112° 13.73867982' W	8,050	High density altitude
H-37	36° 38.31833154' N	112° 13.32067935' W	8,300	Indicator
H-42	36° 39.50833152' N	112° 15.94767996' W	8,000	Indicator
H-47	36° 36.94033142' N	112° 12.54267906' W	8,400	Pad indicator and wind indicator
H-53	36° 36.80733113' N	112° 17.01567996' W	8,200	Indicator
H-97	36° 36.14233079' N	112° 21.01268067' W	7,000	Wooden fence line, power lines, structures, vehicles, basketball court
Spike Camp 2	36° 37.05957920' N	112° 13.18817687' W		
Spike Camp 1	36° 42.71426667' N	112° 12.93840330' W		
DP-19	36° 42.82338214' N	112° 12.93840330' W		
DP-52	36° 37.70487424' N	112° 16.63986218' W		
DP-57	36° 35.05765467' N	112° 16.62883767' W		
DP-84	36° 36.62892548' N	112° 19.71677066' W		
DP-86	36° 35.78667779' N	112° 19.55102437' W		
DP-88	36° 35.15033066' N	112° 20.85768051' W		
DP-95	36° 36.96273907' N	112° 20.60179112' W		
DP-116	36° 41.22593797' N	112° 20.83106677' W		

**SOUTHWEST AREA**  
 Southwest IMT 3, M. Landis  
 6/16/2020 0328

North American 1983 Datum, Lat/Long Grid  
 Name: Air Operations Map