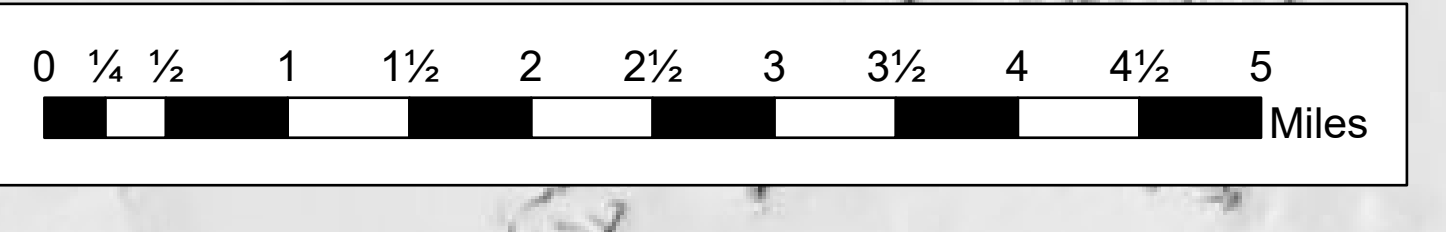
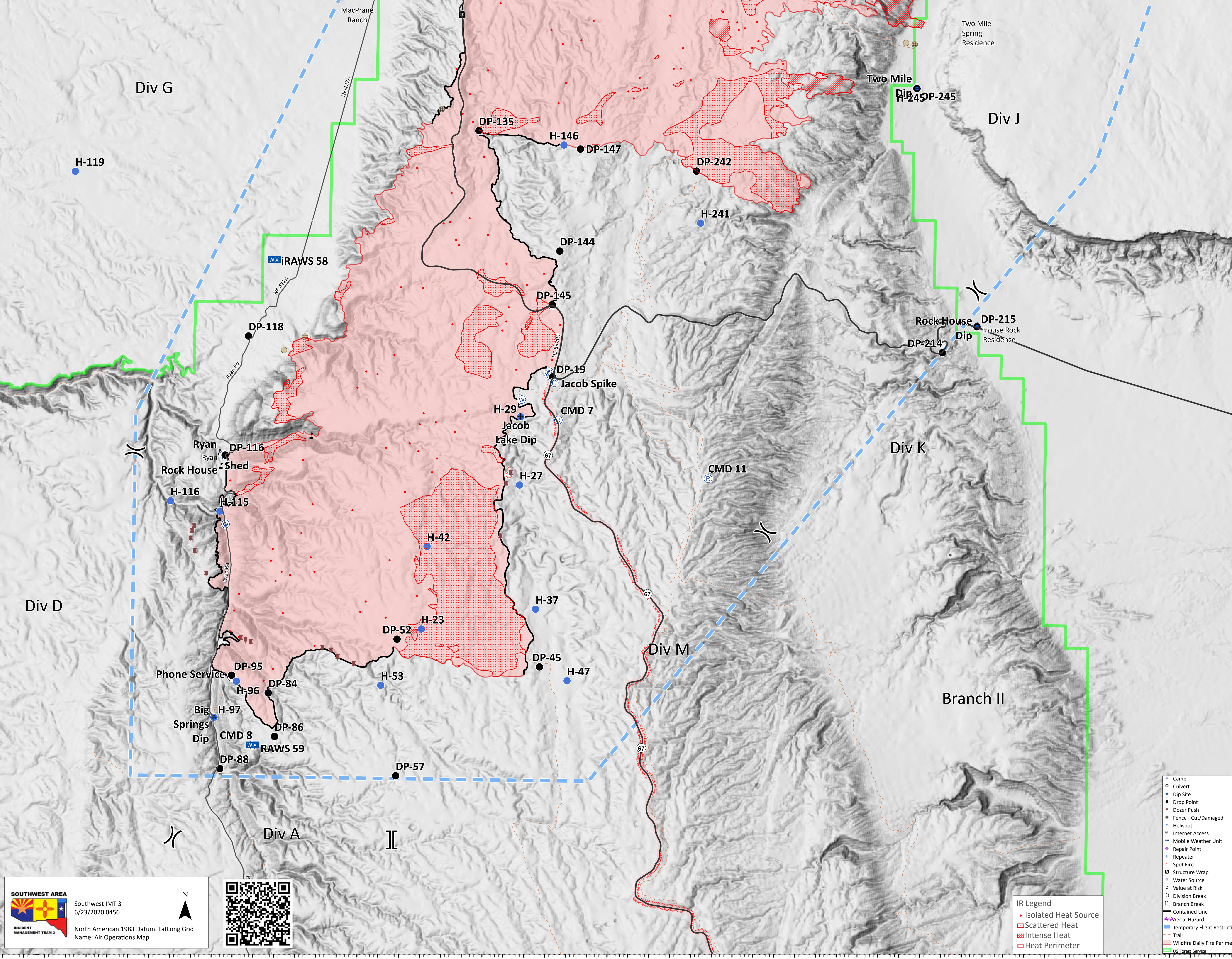


Air Operations Map

Mangum
 AZ-KNF-000359
 6/23/2020 Day
 71,043 acres at 6/23/20 0019



Label	Latitude	Longitude	Elevation (feet)	Hazards
Big Springs Dip	36° 36.14233079' N	112° 21.01268067' W	7,000	Wooden fence line, power lines, structures, vehicles, basketball court
Jacob Lake Dip	36° 42.04733198' N	112° 13.73867982' W	8,050	High density altitude
Rock House Dip	36° 43.89364817' N	112° 02.78387175' W	5,380'	
Two Mile Dip	36° 48.49533337' N	112° 04.29367858' W	5,770'	
H-96	36° 36.84533087' N	112° 20.48568058' W	7,900	
H-23	36° 37.90733133' N	112° 16.06067984' W	8,100	Pad indicator and wind indicator
H-27	36° 40.72233179' N	112° 13.74067964' W	8,000	Pad indicator and wind indicator
H-29	36° 42.04733198' N	112° 13.73867982' W	8,050	High density altitude
H-37	36° 38.31833154' N	112° 13.32067935' W	8,300	Pad indicator and wind indicator
H-47	36° 36.94033142' N	112° 12.54267906' W	8,400	Pad indicator and wind indicator
H-53	36° 36.80733113' N	112° 17.01567996' W	8,200	
H-97	36° 36.14233079' N	112° 21.01268067' W	7,000	Wooden fence line, power lines, structures, vehicles, basketball court
H-115	36° 40.13733128' N	112° 20.93768105' W	7,000	Type 3 only. Land in turnaround.
H-116	36° 40.32733122' N	112° 22.12868125' W	6,150'	
H-119	36° 46.68233186' N	W112° 24.53368237'	5,700	Type 3,2 hazard - canyon bottom, road traffic
H-138	36° 56.18233363' N	112° 15.31068154' W	5,300	Type 2,3 power lines to north, dusty road
H-146	36 47.320	112° 12.77768017' W	7,578	Wide open green grass type 2 approved
H-147	36° 54.96033398' N	112° 07.50867985' W	6,660	Type 3 hazard - dusty road
H-241	36 45.840	112° 09.46267932' W	7,500	Type 3
H-245	36° 48.49533337' N	112° 04.29367858' W	6,000'	Type 2. Land on west side of road.
Big Springs Spike	36° 35.18309680' N	W112° 20.86811762'		
Jacob Spike	36° 42.71426673' N	W112° 12.93840330'		
DP-19	36° 42.82338214' N	112° 12.98463999' W		
DP-52	36° 37.70487424' N	112° 16.63986218' W		
DP-57	36° 35.05765467' N	112° 16.62883767' W		
DP-84	36° 36.62892548' N	112° 19.71677066' W		
DP-86	36° 35.78667779' N	112° 19.55102437' W		
DP-90	36° 56.22433365' N	112° 15.28568153' W		
DP-88	36° 35.15033066' N	112° 20.85768051' W		
DP-95	36° 36.96273907' N	112° 20.60179112' W		
DP-116	36° 41.22593797' N	112° 20.83106677' W		
DP-118	36° 43.53912286' N	112° 20.30791095' W		
DP-145	36° 44.22439500' N	112° 13.01127199' W		
DP-148	36° 56.40433443' N	112° 03.40867919' W		
DP-214	36° 43.38433278' N	112° 03.61067794' W		
DP-215	36° 43.89333292' N	112° 02.78567784' W		
DP-245	36° 48.49533337' N	112° 04.29367858' W		



SOUTHWEST AREA
 Southwest IMT 3
 6/23/2020 0456
 North American 1983 Datum, LatLong Grid
 Name: Air Operations Map

IR Legend

- Isolated Heat Source
- Scattered Heat
- Intense Heat
- Heat Perimeter

Legend

- Camp
- Culvert
- Dip Site
- Drop Point
- Dropper Push
- Fence - Cut/Damaged
- Helipoint
- Internet Access
- Mobile Weather Unit
- Repair Point
- Repeater
- Spot Fire
- Structure Wrap
- Water Source
- Value at Risk
- Division Break
- Branch Break
- Aerial Hazard
- Temporary Flight Restriction
- Trail
- Wildfire Daily Fire Perimeter
- US Forest Service