

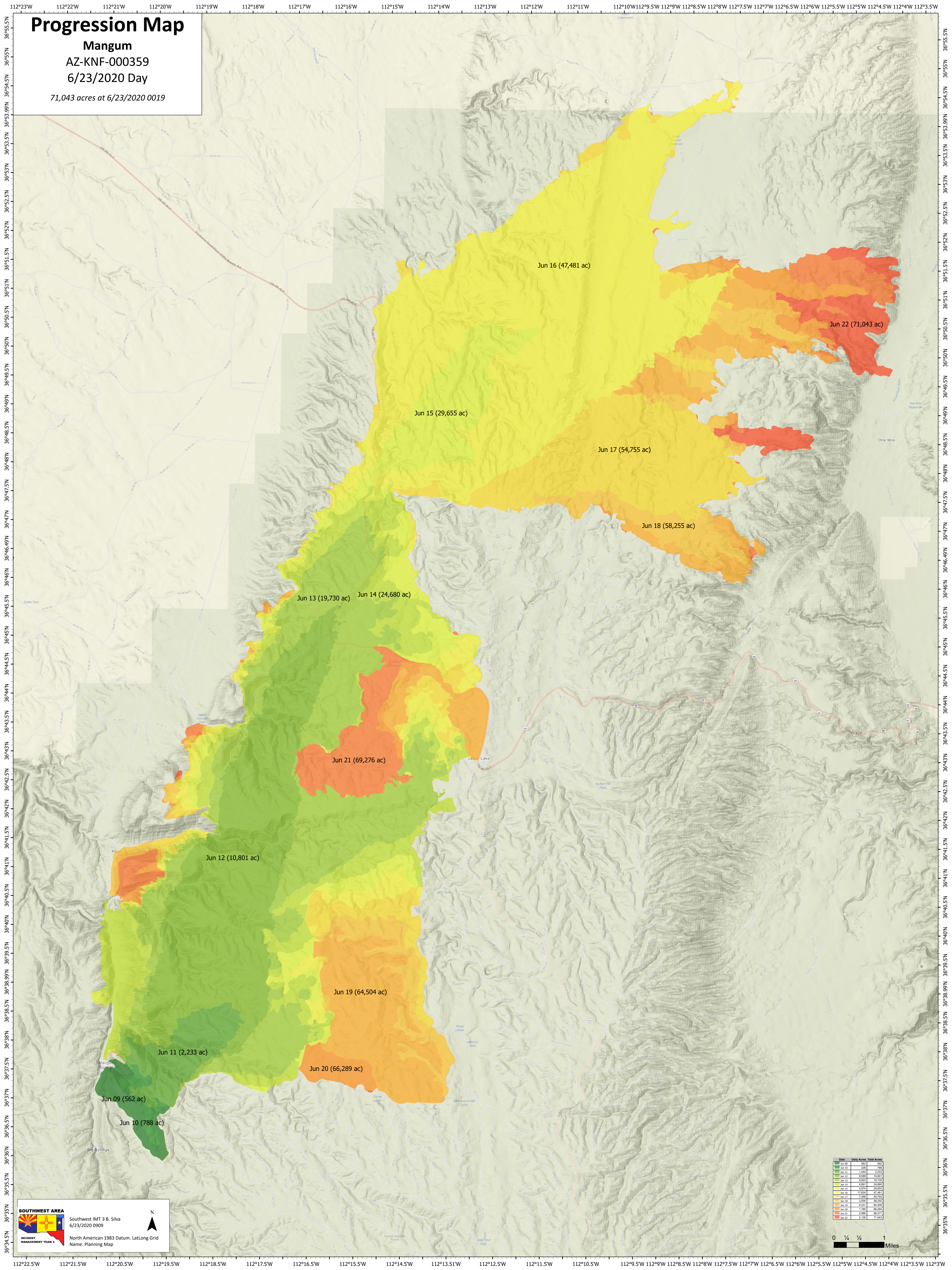
Progression Map

Mangum

AZ-KNF-000359

6/23/2020 Day

71,043 acres at 6/23/2020 0019



Jun 16 (47,481 ac)

Jun 22 (71,043 ac)

Jun 15 (29,655 ac)

Jun 17 (54,755 ac)

Jun 18 (58,255 ac)

Jun 13 (19,730 ac)

Jun 14 (24,680 ac)

Jun 21 (69,276 ac)

Jun 12 (10,801 ac)

Jun 19 (64,504 ac)

Jun 11 (2,233 ac)

Jun 20 (66,289 ac)

Jun 09 (562 ac)

Jun 10 (788 ac)

| Date | Daily Acres | Total Acres |
|--------|-------------|-------------|
| Jun 09 | 562 | 562 |
| Jun 10 | 226 | 788 |
| Jun 11 | 1,445 | 2,233 |
| Jun 12 | 8,568 | 10,801 |
| Jun 13 | 8,993 | 19,794 |
| Jun 14 | 4,886 | 24,680 |
| Jun 15 | 9,074 | 33,754 |
| Jun 16 | 17,727 | 51,481 |
| Jun 17 | 2,274 | 53,755 |
| Jun 18 | 3,500 | 57,255 |
| Jun 19 | 4,249 | 61,504 |
| Jun 20 | 1,785 | 63,289 |
| Jun 21 | 3,987 | 67,276 |
| Jun 22 | 2,126 | 71,043 |

SOUTHWEST AREA
Southwest IMT 3 B. Silva
6/23/2020 0909

INCIDENT MANAGEMENT TEAM 2

North American 1983 Datum, Lat/Long Grid
Name: Planning Map

