

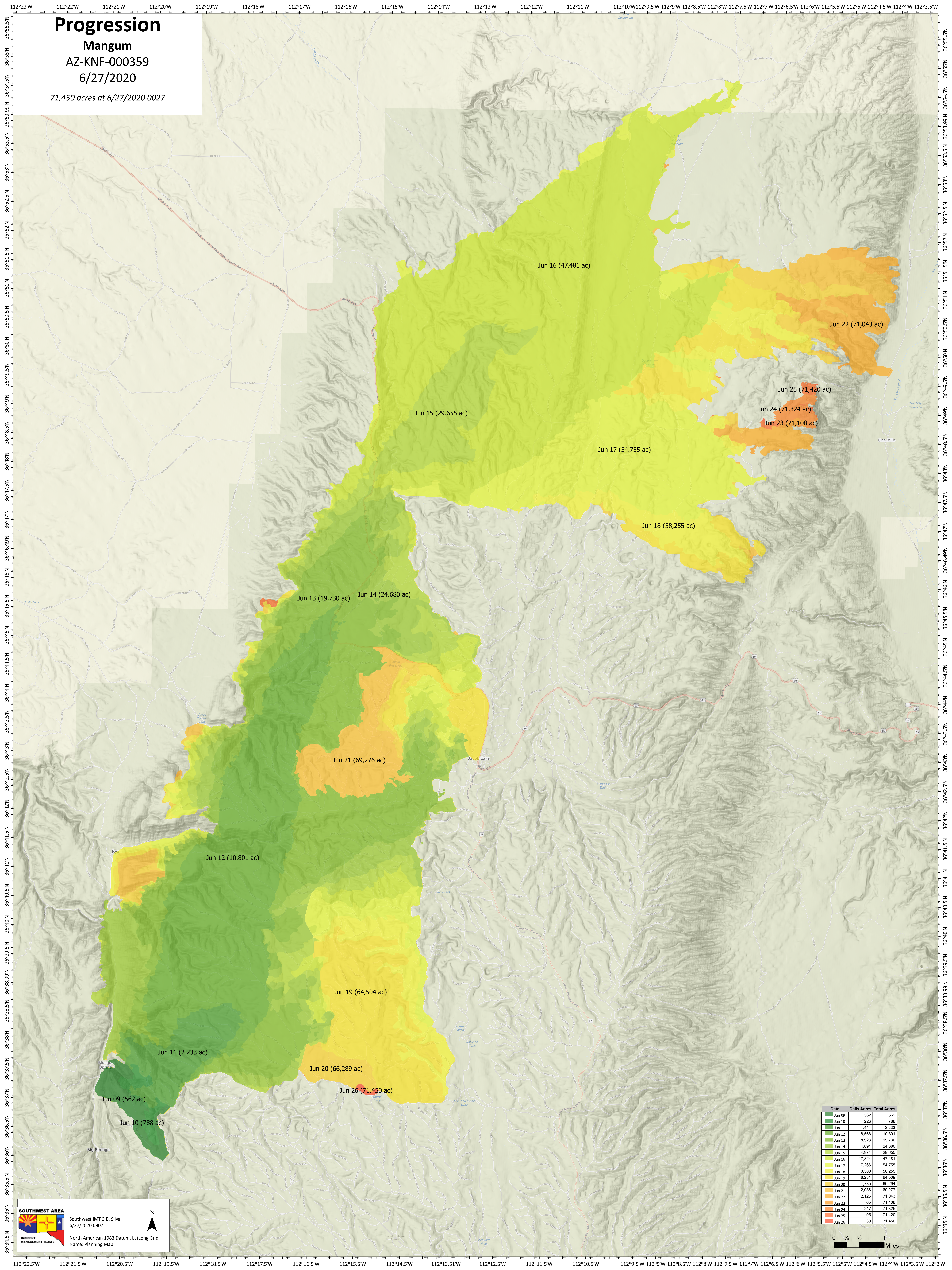
Progression

Mangum

AZ-KNF-000359

6/27/2020

71,450 acres at 6/27/2020 0027



Jun 09 (562 ac)
Jun 10 (788 ac)
Jun 11 (2,233 ac)
Jun 12 (10,801 ac)
Jun 13 (19,730 ac)
Jun 14 (24,680 ac)
Jun 15 (29,655 ac)
Jun 16 (47,481 ac)
Jun 17 (54,755 ac)
Jun 18 (58,255 ac)
Jun 19 (64,504 ac)
Jun 20 (66,289 ac)
Jun 21 (69,276 ac)
Jun 22 (71,043 ac)
Jun 23 (71,108 ac)
Jun 24 (71,324 ac)
Jun 25 (71,420 ac)
Jun 26 (71,450 ac)

Date	Daily Acres	Total Acres
Jun 09	562	562
Jun 10	226	788
Jun 11	1,444	2,233
Jun 12	8,568	10,801
Jun 13	8,923	19,730
Jun 14	4,801	24,680
Jun 15	4,974	29,655
Jun 16	17,824	47,481
Jun 17	7,268	54,755
Jun 18	3,500	58,255
Jun 19	6,231	64,504
Jun 20	1,785	66,289
Jun 21	2,986	69,276
Jun 22	2,126	71,043
Jun 23	65	71,108
Jun 24	217	71,325
Jun 25	95	71,420
Jun 26	30	71,450

SOUTHWEST AREA
Southwest IMT 3 B. Silva
6/27/2020 0907
North American 1983 Datum, Lat/Long Grid
Name: Planning Map

