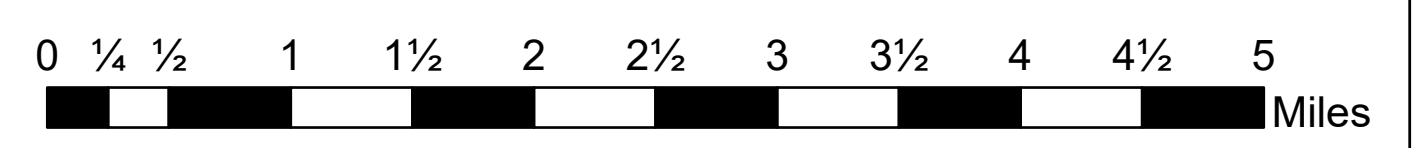


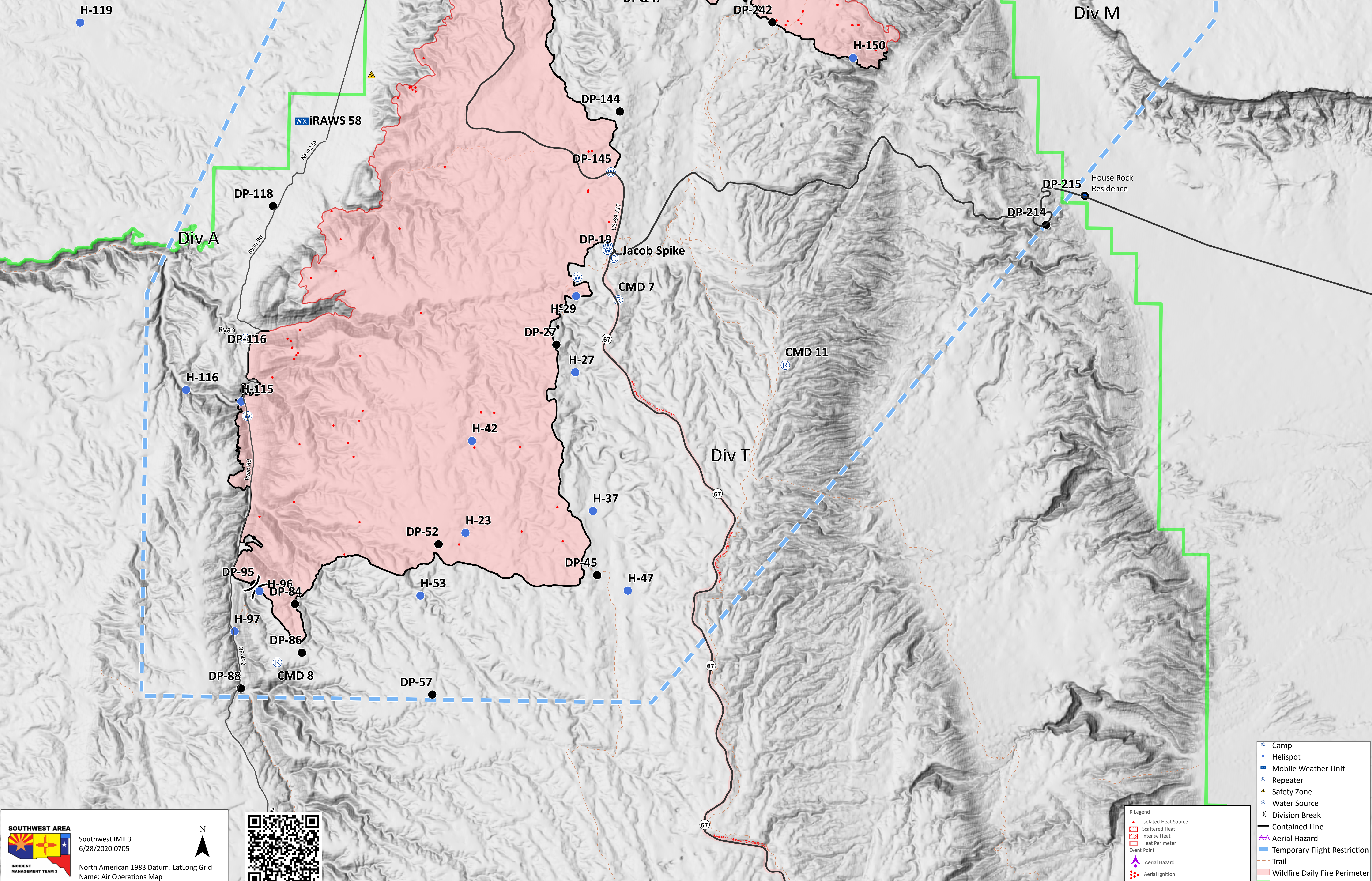
Air Operations Map

Mangum
 AZ-KNF-000359
 6/27/2020 Day

71,450 acres at 6/28/2020 0154



Label	Latitude	Longitude	Elevation (feet)	Hazards
Big Springs Dip	36° 36.14233079' N	112° 21.01268067' W	7,000	
Jacob Lake Dip	36° 42.04733198' N	112° 13.73867982' W	8,050	
Rock House Dip	36° 43.89364817' N	112° 02.78387175' W	5,380	Label Rock House Dip
Two Mile Dip	36° 48.49533337' N	112° 07.58798077' W	5,770	6,660' Type 3 hazard - dusty road
DIP 147	36° 54.98050861' N	112° 16.06067984' W	7,500	
H-23	36° 37.90733133' N	112° 13.74067964' W	8,100	Approved, Type 2, 8100'
H-27	36° 40.72233179' N	112° 13.73867982' W	8,000	Jack Tank, Approved, Type 2, 8000'
H-29	36° 42.04733198' N	112° 13.32067935' W	8,050	Jacob Lake hs dip 8050
H-37	36° 38.31833154' N	112° 15.94767996' W	8,300	Approved, Type 2, 8300'
H-42	36° 39.50833152' N	112° 12.54267906' W	8,400	Approved, Type 2, Jack Tank, 8000'
H-47	36° 36.94033142' N	112° 17.01567996' W	8,200	Approved, Type 2
H-53	36° 36.80733113' N	112° 20.48580858' W	7,900	Approved, Type 2, 8300' Division Alpha Helispot 7800' No significant hazards wide open area
H-96	36° 36.84533087' N	112° 21.01268067' W	7,000	
H-97	36° 36.14233079' N	112° 20.93768105' W	7,000	Big Springs dip hs 7000' 22,642 road junction helispot old coral 7000' hazards type 3 only land in turnaround
H-115	36° 40.13733128' N	112° 22.12886125' W	6,150	6,200' Type 3.2 hazard - canyon bottom, road traffic
H-116	36° 40.32733122' N	112° 24.53368237' W	5,700	
H-119	36° 46.68233186' N	112° 15.31068154' W	5,300	5,300' Type 2.3 power lines to north, dusty road
H-138	36° 56.18233363' N	112° 12.77768017' W	7,578	7578' Wide open green grass type 2 approved
H-146	36° 47.32033274' N	112° 07.508867985' W	6,660	6,660' Type 3 hazard - dusty road
H-147	36° 54.96033398' N	112° 04.94367906' W	7,500	Type 3 HDGE 4900'
H-148	36° 51.80433378' N	112° 07.088867910' W	7,000	Type 3 HDGE 5100'
H-149	36° 48.12233319' N	112° 07.82367904' W	5,100	Type 3 HDGE 4900', 90 ft. X 90 ft.
H-150	36° 46.24833289' N	112° 04.29367858' W	4,900	
H-245	36° 48.49533337' N	112° 12.93840330' W	6,000	
Jacob Spike	36° 42.71426673' N	112° 12.98463999' W		
DP-19	36° 42.82338214' N	112° 14.15130501' W		
DP-27	36° 41.19817998' N	112° 13.20936484' W		
DP-45	36° 37.20295349' N	112° 16.63986218' W		
DP-52	36° 37.70487424' N	112° 16.73043816' W		
DP-57	36° 35.09009782' N	112° 19.71677066' W		
DP-84	36° 36.62892548' N	112° 19.55102437' W		
DP-86	36° 35.78667779' N	112° 20.85768051' W		
DP-88	36° 35.15033066' N	112° 15.2858153' W		
DP-90	36° 56.22433365' N	112° 20.60179112' W		
DP-95	36° 36.96278907' N	112° 30.83106677' W		
DP-116	36° 41.22593797' N	112° 20.30791095' W		
DP-118	36° 43.53912286' N	112° 14.82955083' W		
DP-135	36° 47.57652046' N	112° 12.84515039' W		
DP-144	36° 45.26485400' N	112° 13.03127199' W		
DP-145	36° 44.22439500' N	112° 12.38125633' W		
DP-147	36° 47.24630330' N	112° 03.40867919' W		
DP-148	36° 56.40433437' N	112° 03.61067794' W		
DP-214	36° 43.38433278' N	112° 02.78567784' W		
DP-215	36° 43.89333292' N	112° 09.57654913' W		
DP-242	36° 46.84688688' N	112° 04.29367858' W		
DP-245	36° 48.49533337' N	112° 12.93840330' W		



SOUTHWEST AREA
 Southwest IMT 3
 6/28/2020 0705
 INCIDENT MANAGEMENT TEAM 3
 North American 1983 Datum, Lat/Long Grid
 Name: Air Operations Map



Legend

- Camp
- Helispot
- Mobile Weather Unit
- Repeater
- ▲ Safety Zone
- Water Source
- Division Break
- Contained Line
- Aerial Hazard
- Temporary Flight Restriction
- Trail
- Wildfire Daily Fire Perimeter
- US Forest Service