

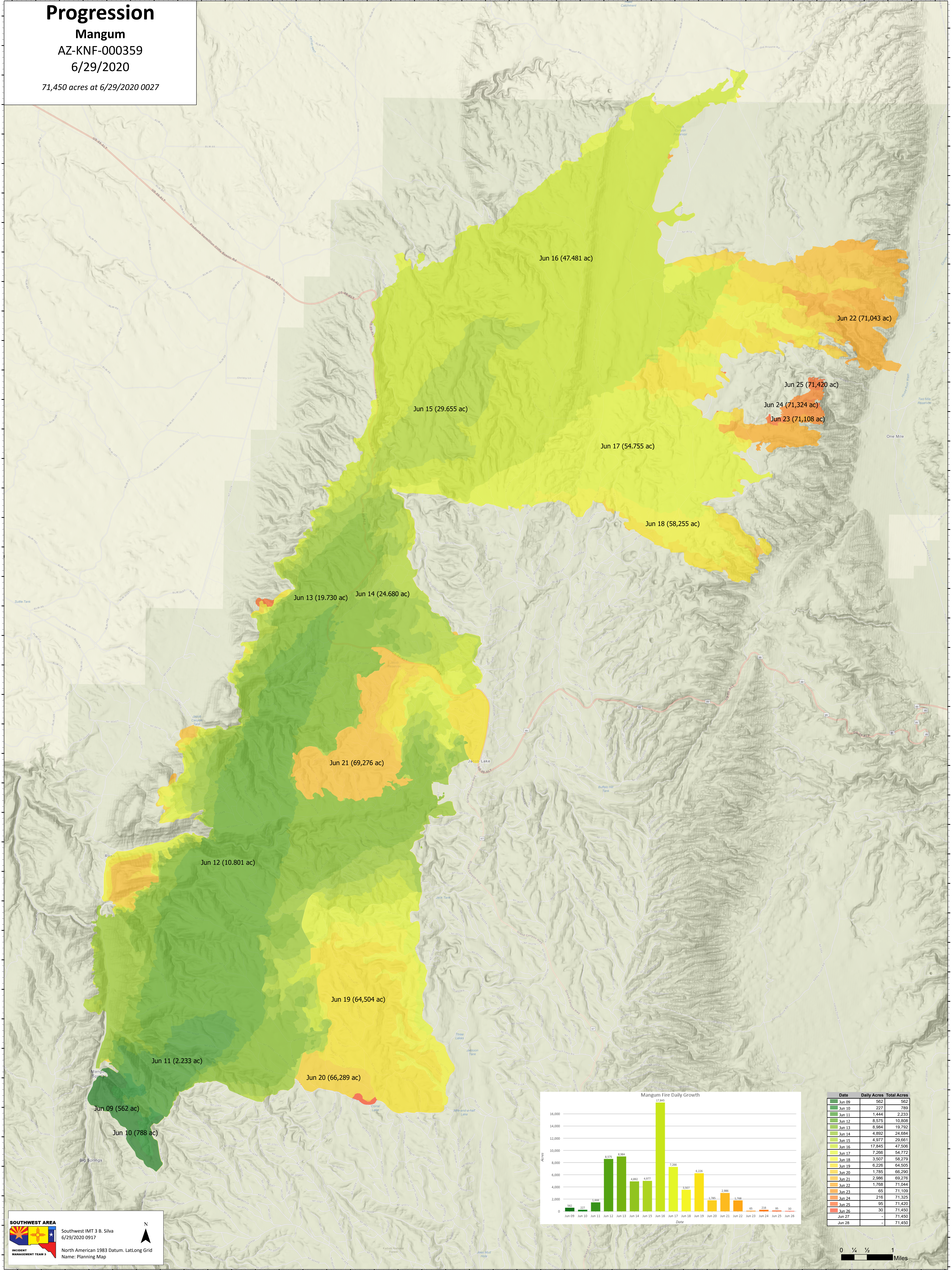
Progression

Mangum

AZ-KNF-000359

6/29/2020

71,450 acres at 6/29/2020 0027



Jun 16 (47,481 ac)

Jun 22 (71,043 ac)

Jun 25 (71,420 ac)

Jun 24 (71,324 ac)

Jun 23 (71,108 ac)

Jun 17 (54,755 ac)

Jun 18 (58,255 ac)

Jun 13 (19,730 ac)

Jun 14 (24,680 ac)

Jun 21 (69,276 ac)

Jun 12 (10,801 ac)

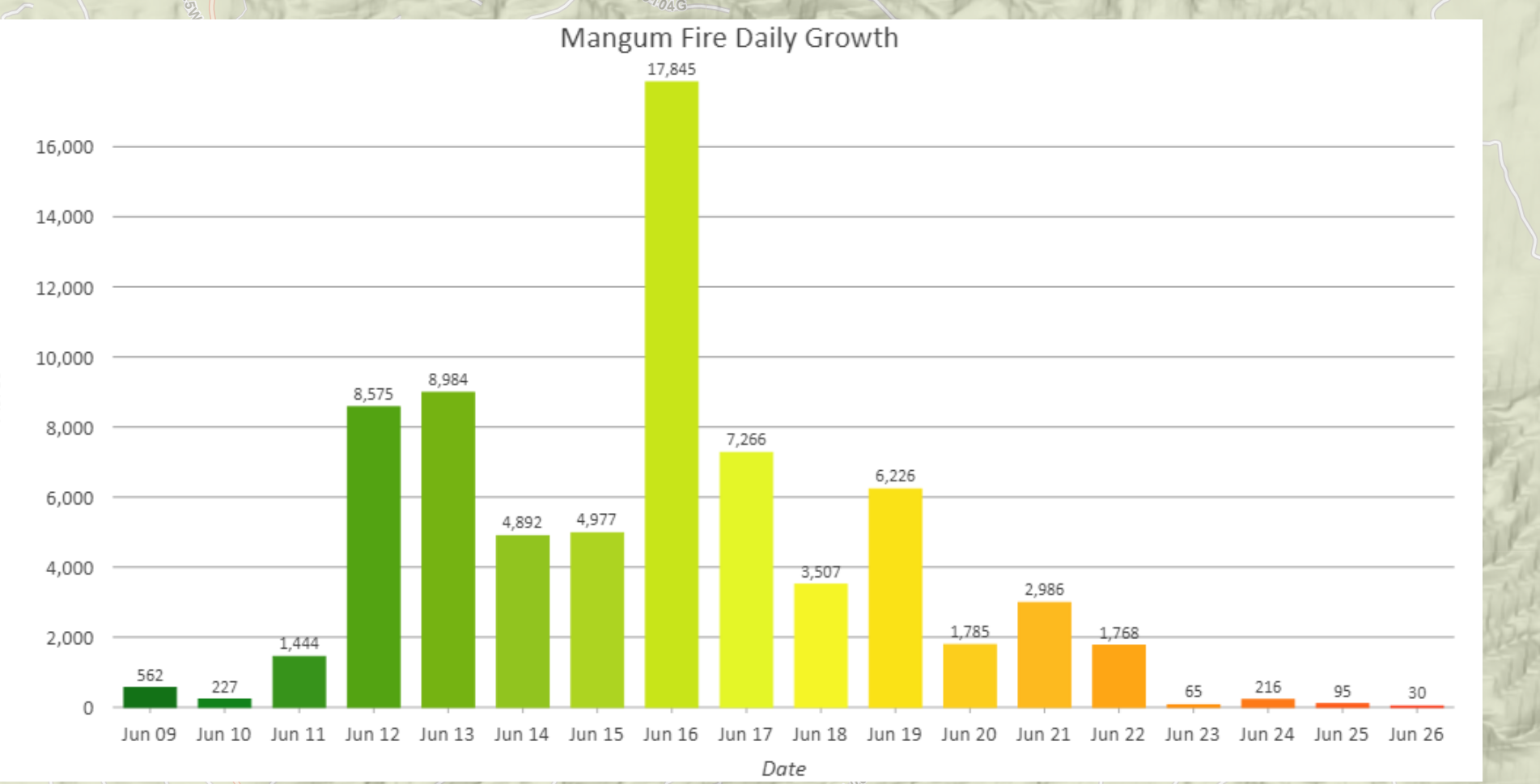
Jun 19 (64,504 ac)

Jun 11 (2,233 ac)


Jun 20 (66,289 ac)

Jun 09 (562 ac)

Jun 10 (788 ac)



Date	Daily Acres	Total Acres
Jun 09	562	562
Jun 10	227	789
Jun 11	1,444	2,233
Jun 12	8,575	10,808
Jun 13	8,984	19,792
Jun 14	4,892	24,684
Jun 15	4,977	29,661
Jun 16	17,845	47,506
Jun 17	7,266	54,772
Jun 18	3,507	58,279
Jun 19	6,226	64,505
Jun 20	1,785	66,290
Jun 21	2,986	69,276
Jun 22	1,768	71,044
Jun 23	65	71,109
Jun 24	216	71,325
Jun 25	95	71,420
Jun 26	30	71,450
Jun 27	-	71,450
Jun 28	-	71,450

SOUTHWEST AREA

 Southwest IMT 3 B. Silva
 6/29/2020 0917
 North American 1983 Datum, Lat/Long Grid
 Name: Planning Map

