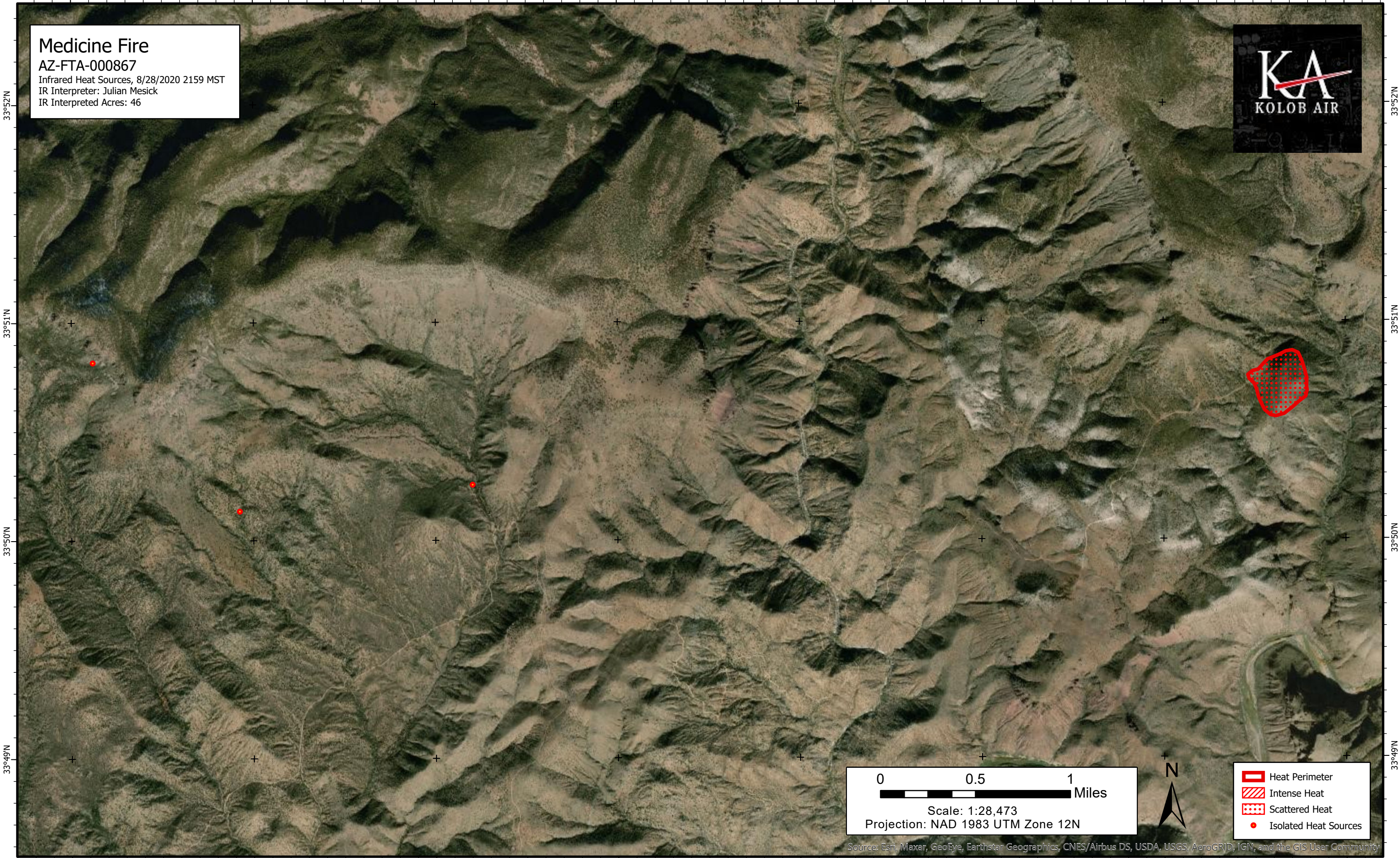


110°44'W 110°43'W 110°42'W 110°41'W 110°40'W 110°39'W 110°38'W 110°37'W

Medicine Fire
AZ-FTA-000867
Infrared Heat Sources, 8/28/2020 2159 MST
IR Interpreter: Julian Mesick
IR Interpreted Acres: 46



33°52'N

33°51'N

33°50'N

33°49'N

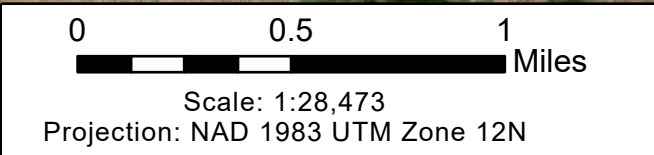
33°52'N

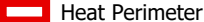



33°51'N

33°50'N

33°49'N

110°44'W 110°43'W 110°42'W 110°41'W 110°40'W 110°39'W 110°38'W 110°37'W



-  Heat Perimeter
-  Intense Heat
-  Scattered Heat
-  Isolated Heat Sources

Source: Esri, Maxar, GeoEye, Earthstar Geographics, CNES/Airbus DS, USDA, USGS, AeroGRID, IGN, and the GIS User Community