

IAP Index

Polles
AZ-TNF-001830
7/10/2020 Day

572 acres at 7/7/2020 @ 2236

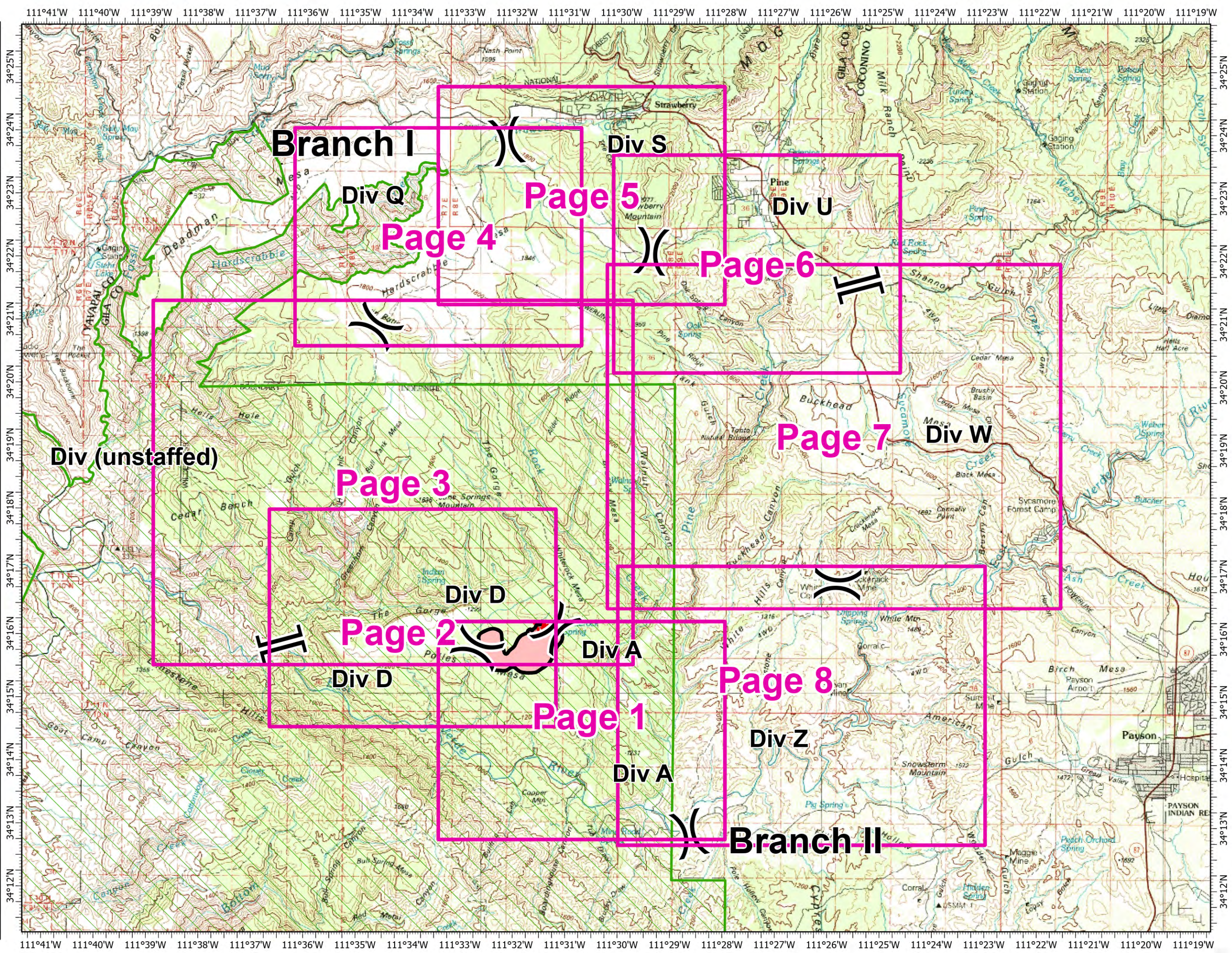


- Division Break
- Branch Break
- Uncontrolled Fire Edge
- Contained Line
- Wildfire Daily Fire Perimeter
- National Wilderness Area

PageName	PageNumber
Div A	1
Div D	2
Div (unstaffed)	3
Div Q	4
Div S	5
Div U	6
Div W	7
Div Z	8

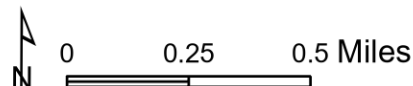


wgrunberg
7/9/2020 1811
Acres from IR
North American 1983 Datum, LatLong Grid



IAP

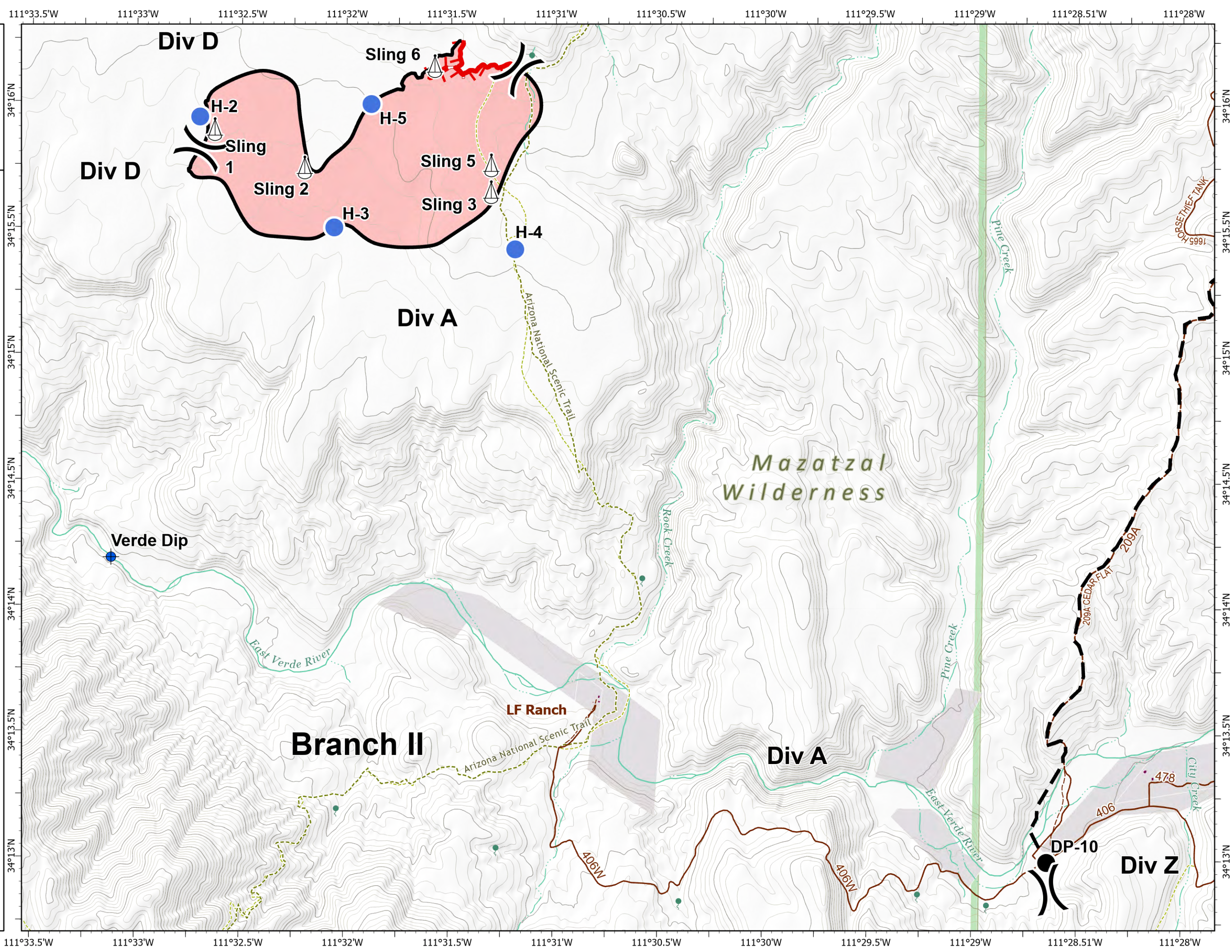
Polles
AZ-TNF-001830
7/10/2020 Day
Div A - Page 1
572 acres at 7/7/2020 @ 2236



- Dip Site
- Drop Point
- Helispot
- Sling Site
- Division Break
- Uncontrolled Fire Edge
- Contained Line
- Planned Fire Line
- Wildfire Daily Fire Perimeter
- Local Road
- 4WD
- Trail
- Structure Outlines
- Private Parcels
- Wilderness



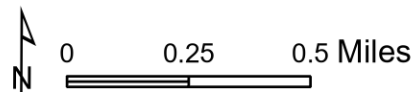
wgrunberg
7/9/2020 1808
Acres from IR
North American 1983 Datum. LatLong Grid



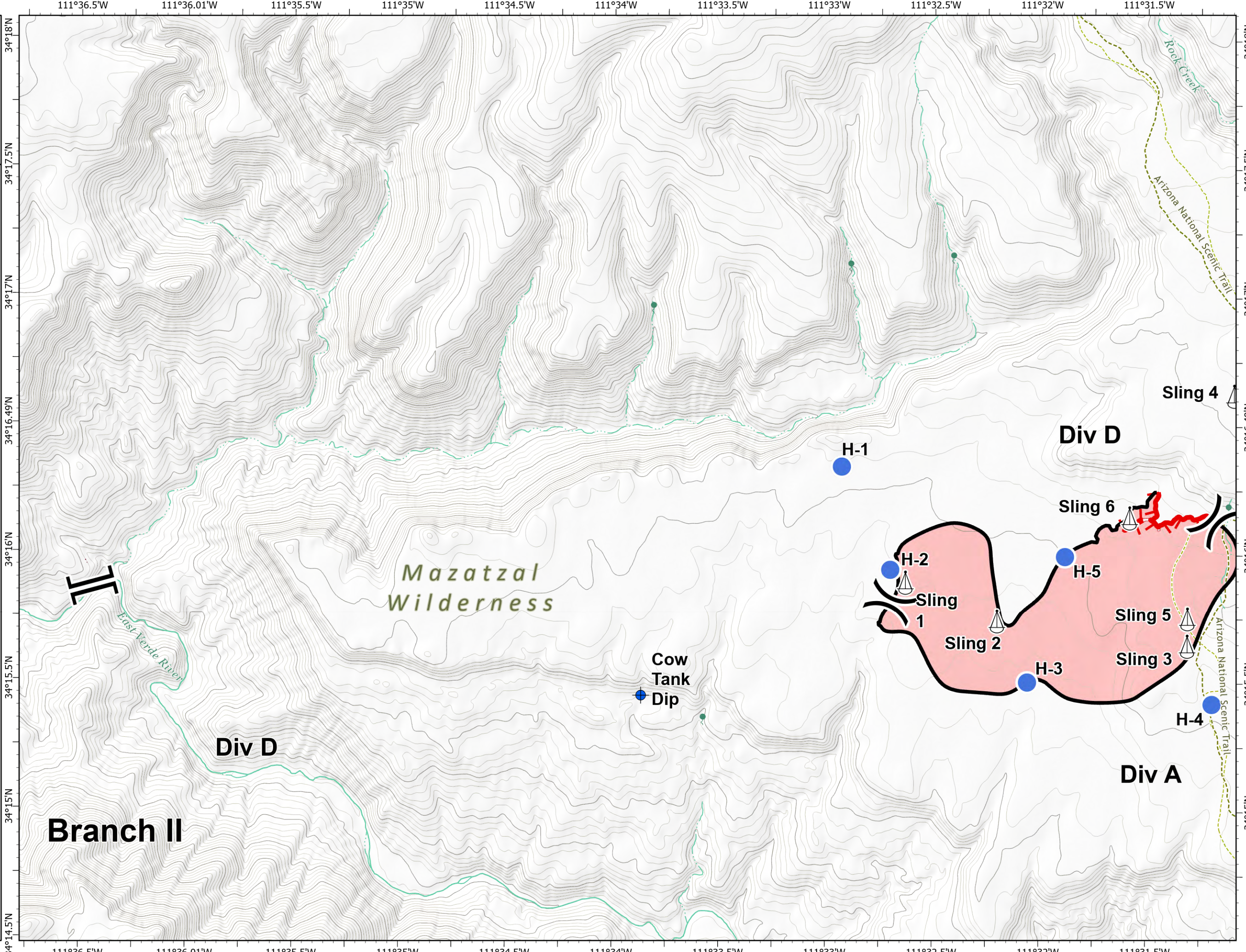
IAP

Polles
AZ-TNF-001830
7/10/2020 Day
Div D - Page 2

572 acres at 7/7/2020 @ 2236



- Dip Site
- Helispot
- Sling Site
- Division Break
- Branch Break
- Uncontrolled Fire Edge
- Contained Line
- Wildfire Daily Fire Perimeter
- Trail
- Structure Outlines
- Wilderness



Mazatzal
Wilderness

Branch II

Div D

Div A

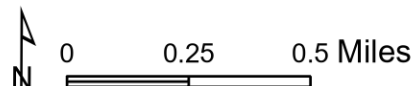


wgrunberg
7/9/2020 1808
Acres from IR
North American 1983 Datum. LatLong Grid

IAP

Polles
AZ-TNF-001830
7/10/2020 Day
Div Q - Page 4

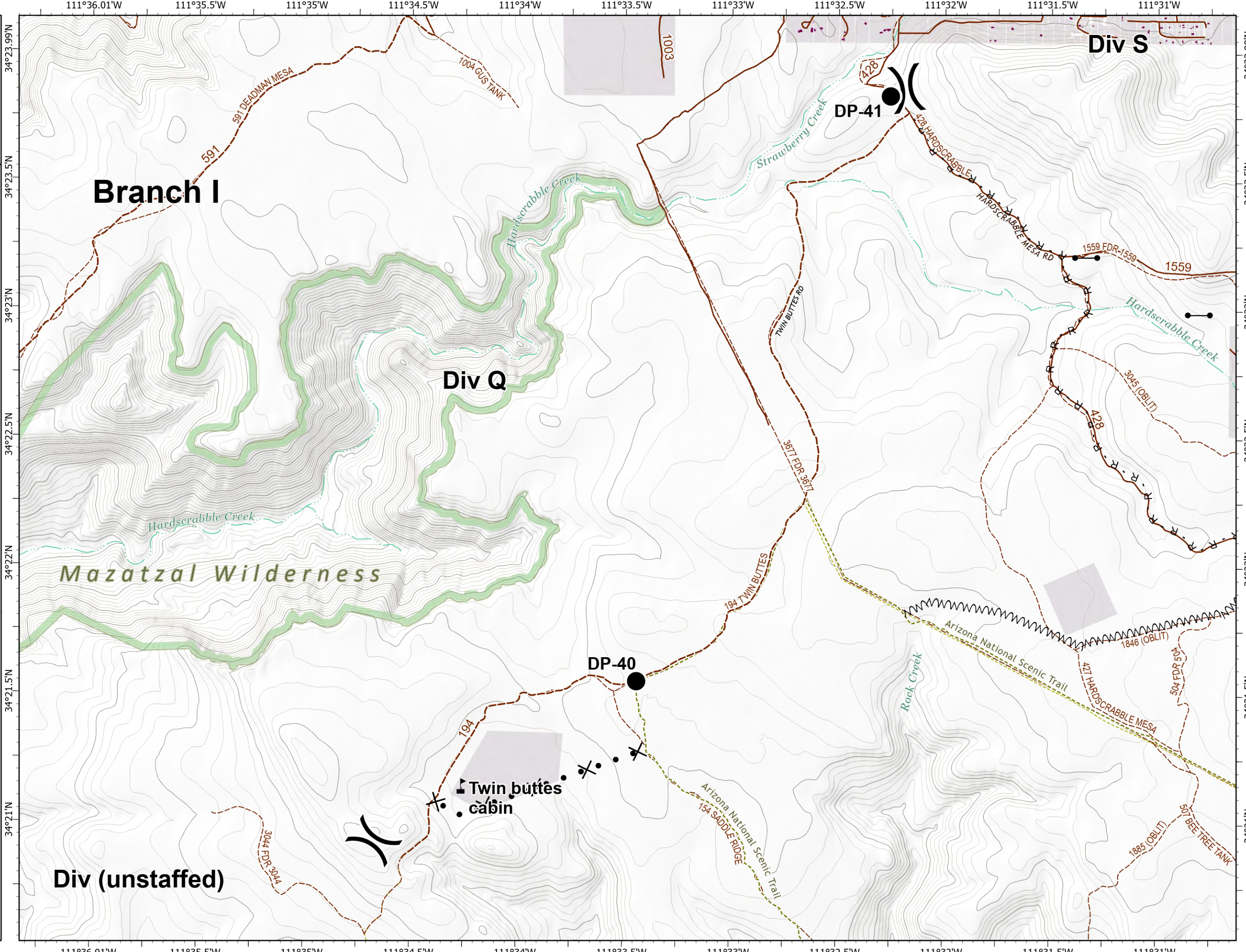
572 acres at 7/7/2020 @ 2236



- Drop Point
- Gate
- ▲ Value at Risk
-) Division Break
- R Road as Completed Line
- X• Proposed Dozer Line
- M Fire Break Planned or Incomplete
- Local Road
- - - 4WD
- - - Trail
- Structure Outlines
- Private Parcels
- Wilderness



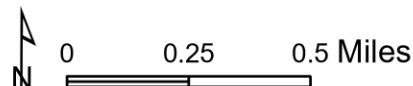
wgrunberg
7/9/2020 1809
Acres from IR
North American 1983 Datum. LatLong Grid



IAP

Polles
AZ-TNF-001830
7/10/2020 Day
Div S - Page 5

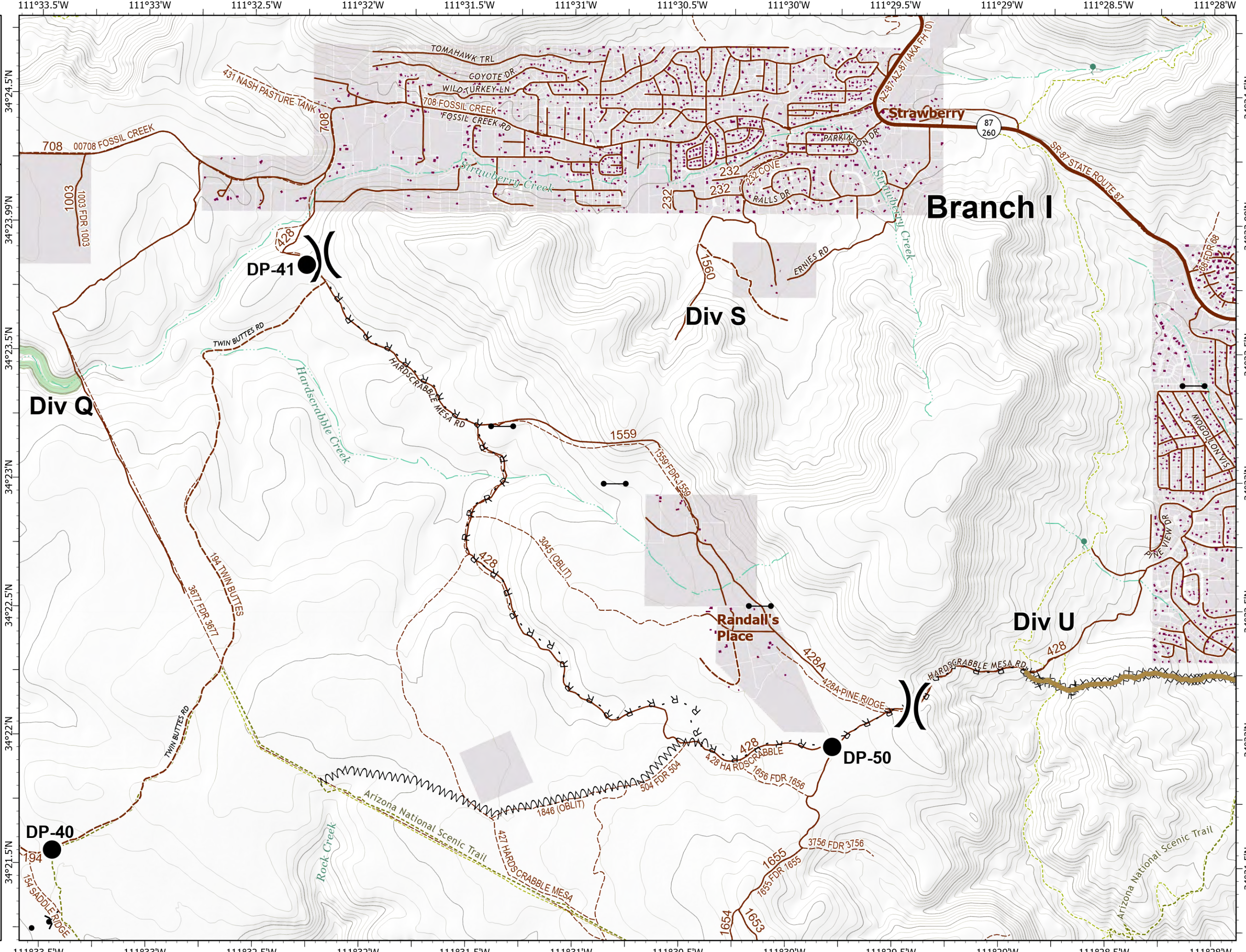
572 acres at 7/7/2020 @ 2236



- Drop Point
- Gate
-) Division Break
- ×× Completed Dozer Line
- R Road as Completed Line
- X• Proposed Dozer Line
- M Fire Break Planned or Incomplete
- Repair Line
- Local Connector
- Local Road
- - - 4WD
- - - Trail
- Structure Outlines
- Private Parcels
- Wilderness

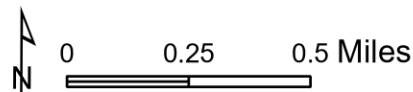


wgrunberg
7/9/2020 1809
Acres from IR
North American 1983 Datum, LatLong Grid



IAP

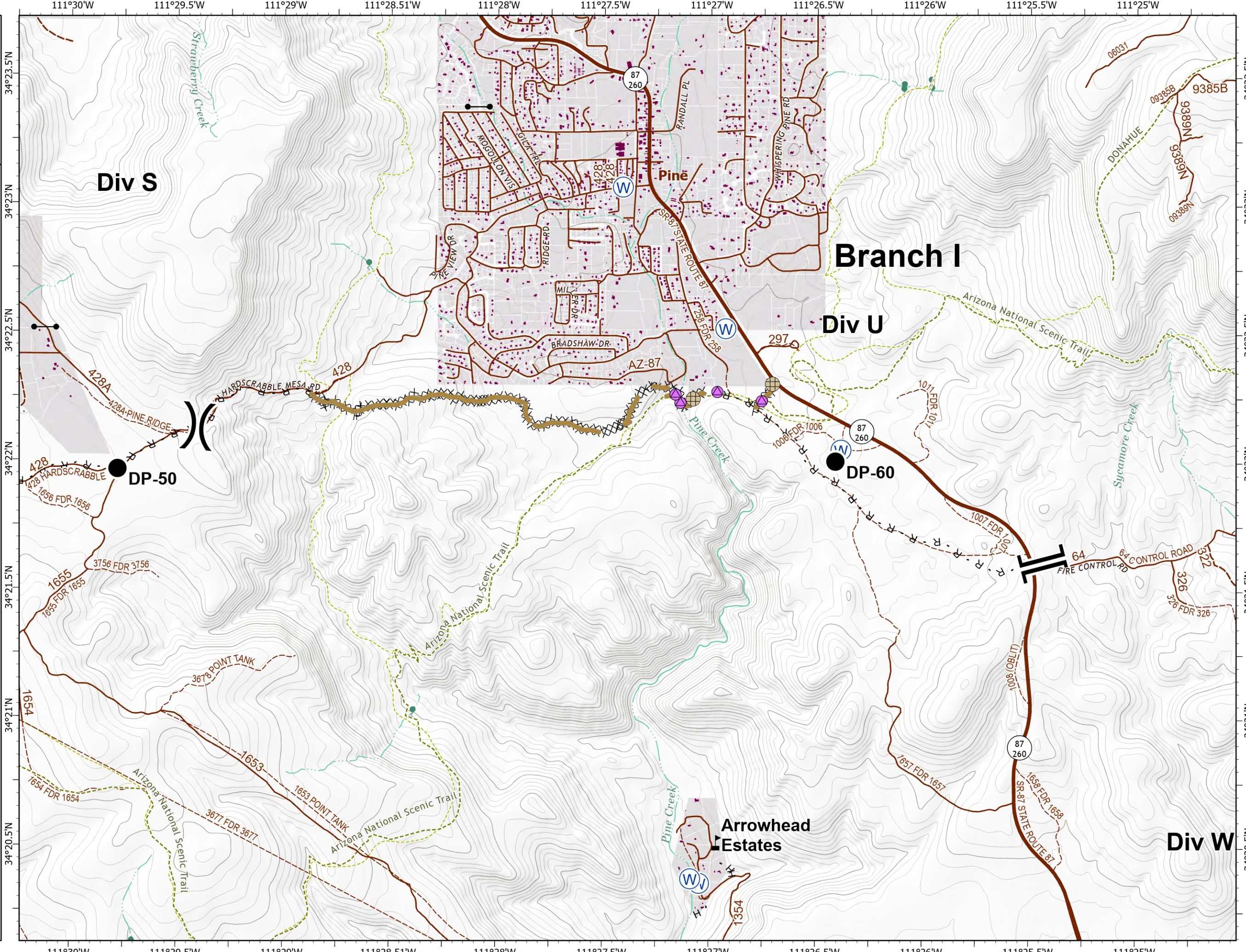
Polles
AZ-TNF-001830
7/10/2020 Day
Div U - Page 6
572 acres at 7/7/2020 @ 2236



- Drop Point
- ⊕ Fence - Cut/Damaged
- ⊥ Gate
- ⊕ Repair Point
- ⊕ Water Source
- ⚠ Value at Risk
-) Division Break
- ⊥ Branch Break
- ⊗ Completed Dozer Line
- H Completed Hand Line
- R Road as Completed Line
- ▬ Planned Fire Line
- ▬ Repair Line
- ▬ Local Connector
- ▬ Local Road
- - - 4WD
- - - Trail
- Structure Outlines
- Private Parcels



wgrunberg
7/9/2020 1809
Acres from IR
North American 1983 Datum. Lat/Long Grid



Div S

Branch I

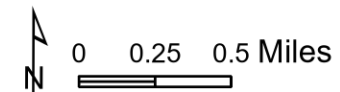
Div U

Arrowhead Estates

Div W

IAP

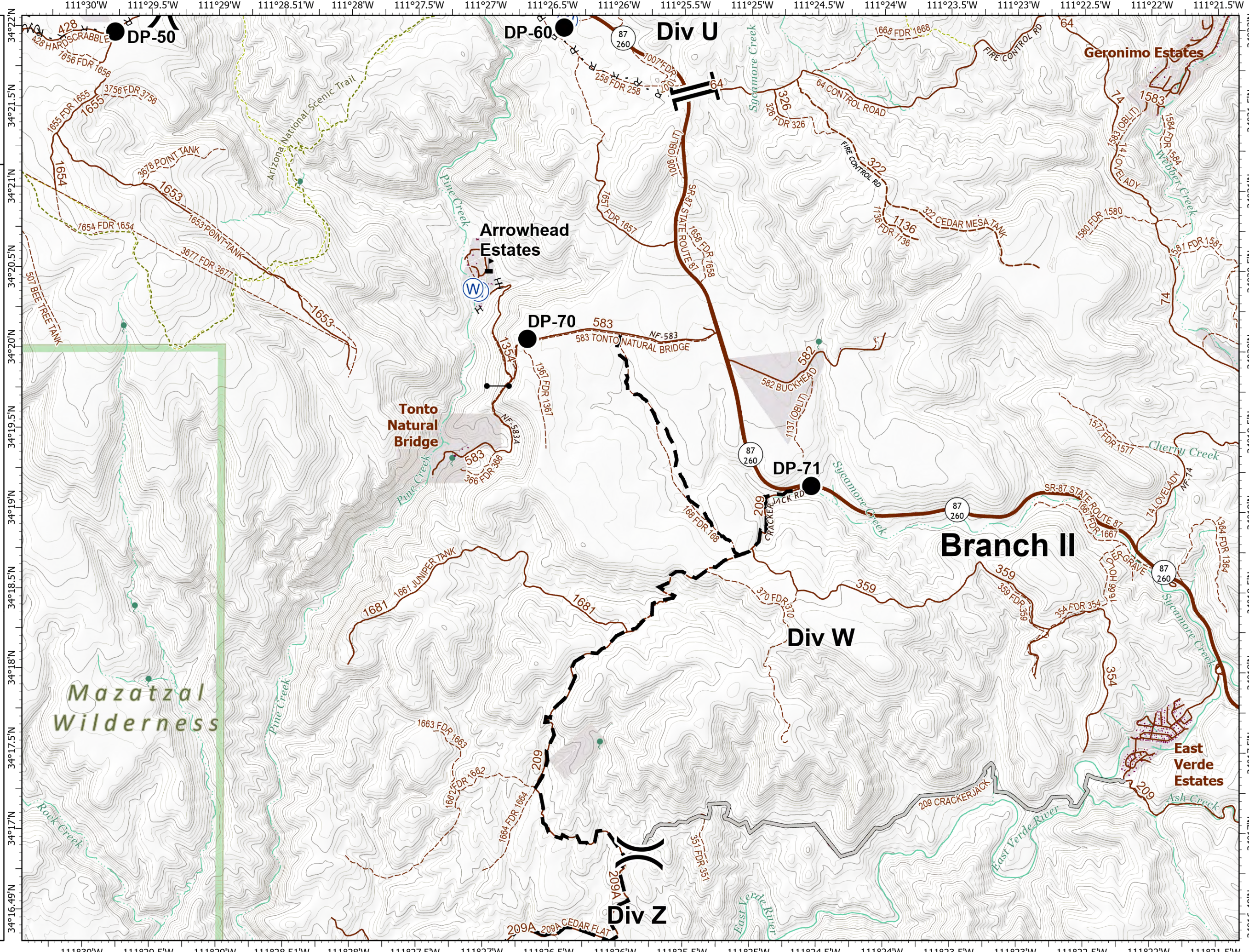
Polles
AZ-TNF-001830
7/10/2020 Day
Div W - Page 7
572 acres at 7/7/2020 @ 2236



- Drop Point
- Gate
- ⊕ Water Source
- ⚡ Value at Risk
-) Division Break
- || Branch Break
- ⊗ Completed Dozer Line
- H Completed Hand Line
- R Road as Completed Line
- Access or Improved Road
- M Fire Break Planned or Incomplete
- Planned Fire Line
- Repair Line
- Local Connector
- Local Road
- 4WD
- Trail
- Structure Outlines
- Private Parcels
- Wilderness

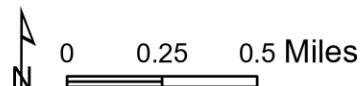


wgrunberg
7/9/2020 1809
Acres from IR
North American 1983 Datum, Lat/Long Grid



IAP

Polles
AZ-TNF-001830
7/10/2020 Day
Div Z - Page 8
572 acres at 7/7/2020 @ 2236



- Drop Point
- Lookout
- ⊕ Water Source
- ⌘ Division Break
- Access or Improved Road
- Planned Fire Line
- Local Road
- - - 4WD
- Structure Outlines
- Private Parcels
- Wilderness



wgrunberg
7/9/2020 1809
Acres from IR
North American 1983 Datum. Lat/Long Grid

