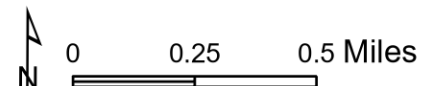


# IAP

Polles  
AZ-TNF-001830  
7/12/2020 Day  
Div A - Page 1

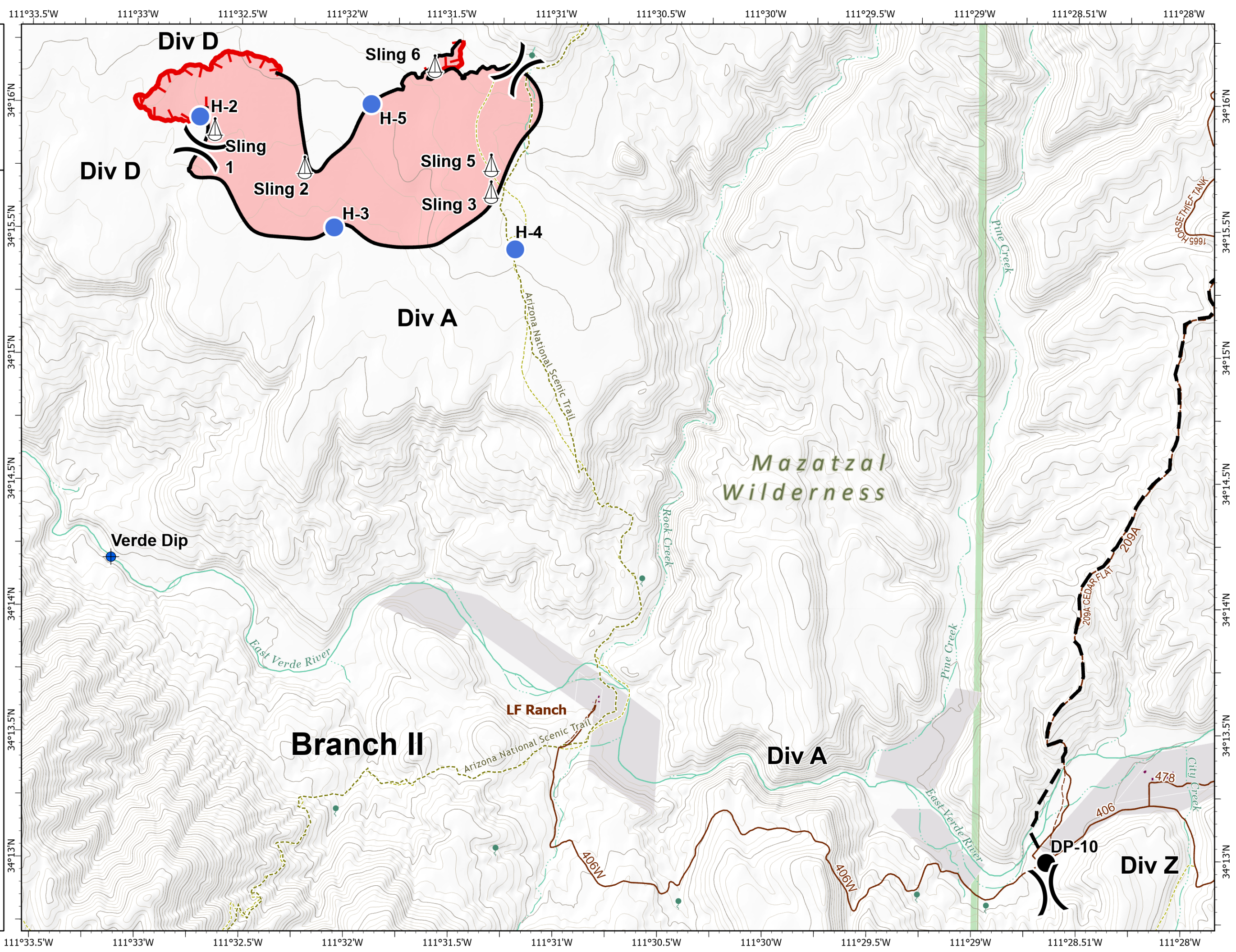
624 acres at 7/11/2020 @ 1800



- Dip Site
- Drop Point
- Helispot
- Sling Site
- Division Break
- Uncontrolled Fire Edge
- Contained Line
- Planned Fire Line
- Wildfire Daily Fire Perimeter
- Local Road
- 4WD
- Trail
- Structure Outlines
- Private Parcels
- Wilderness



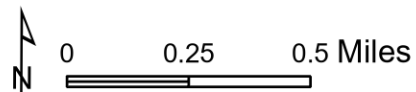
kgaz  
7/12/2020 1023  
Acres from IR and GPS  
North American 1983 Datum, Lat/Long Grid



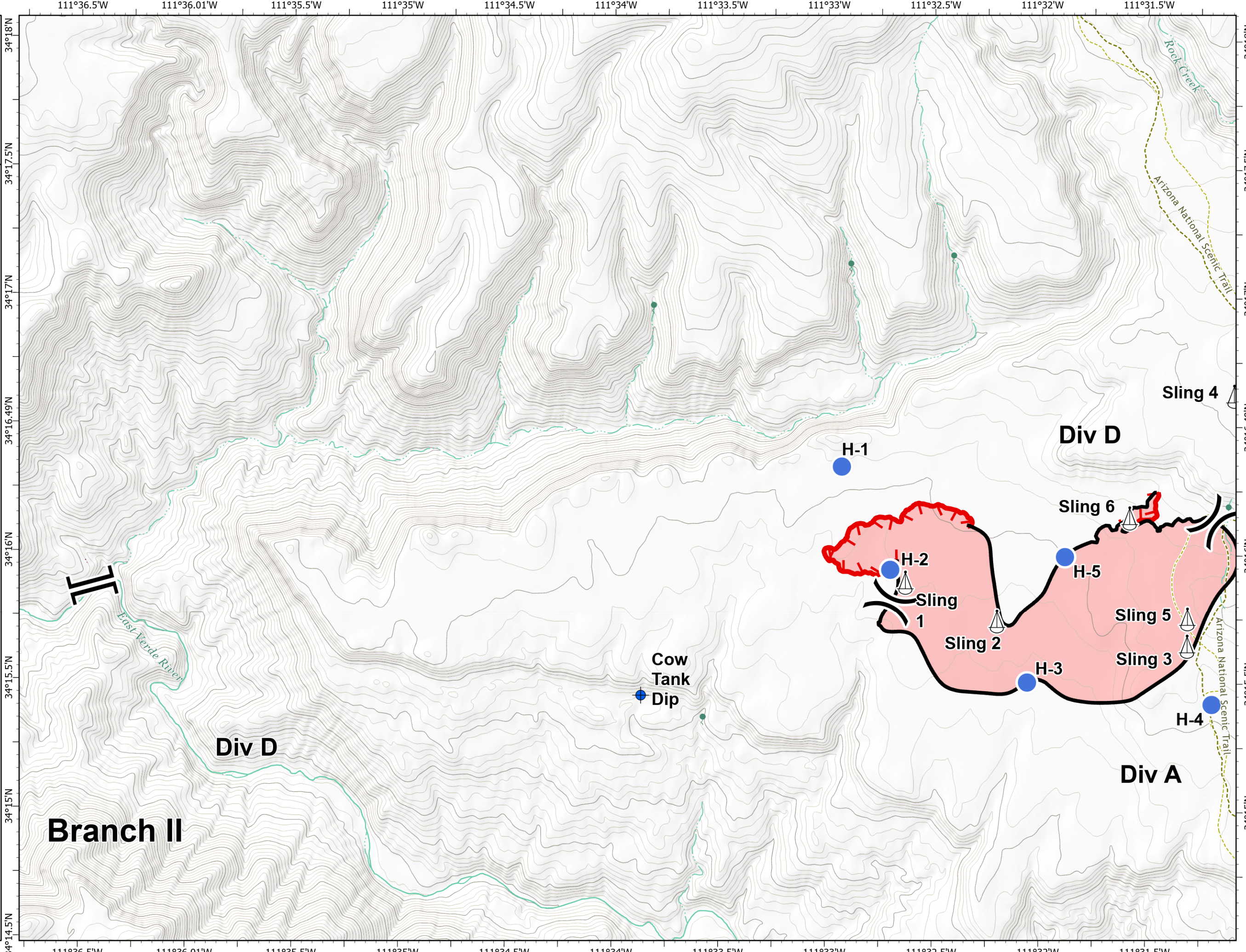
# IAP

Polles  
AZ-TNF-001830  
7/12/2020 Day  
Div D - Page 2

624 acres at 7/11/2020 @ 1800

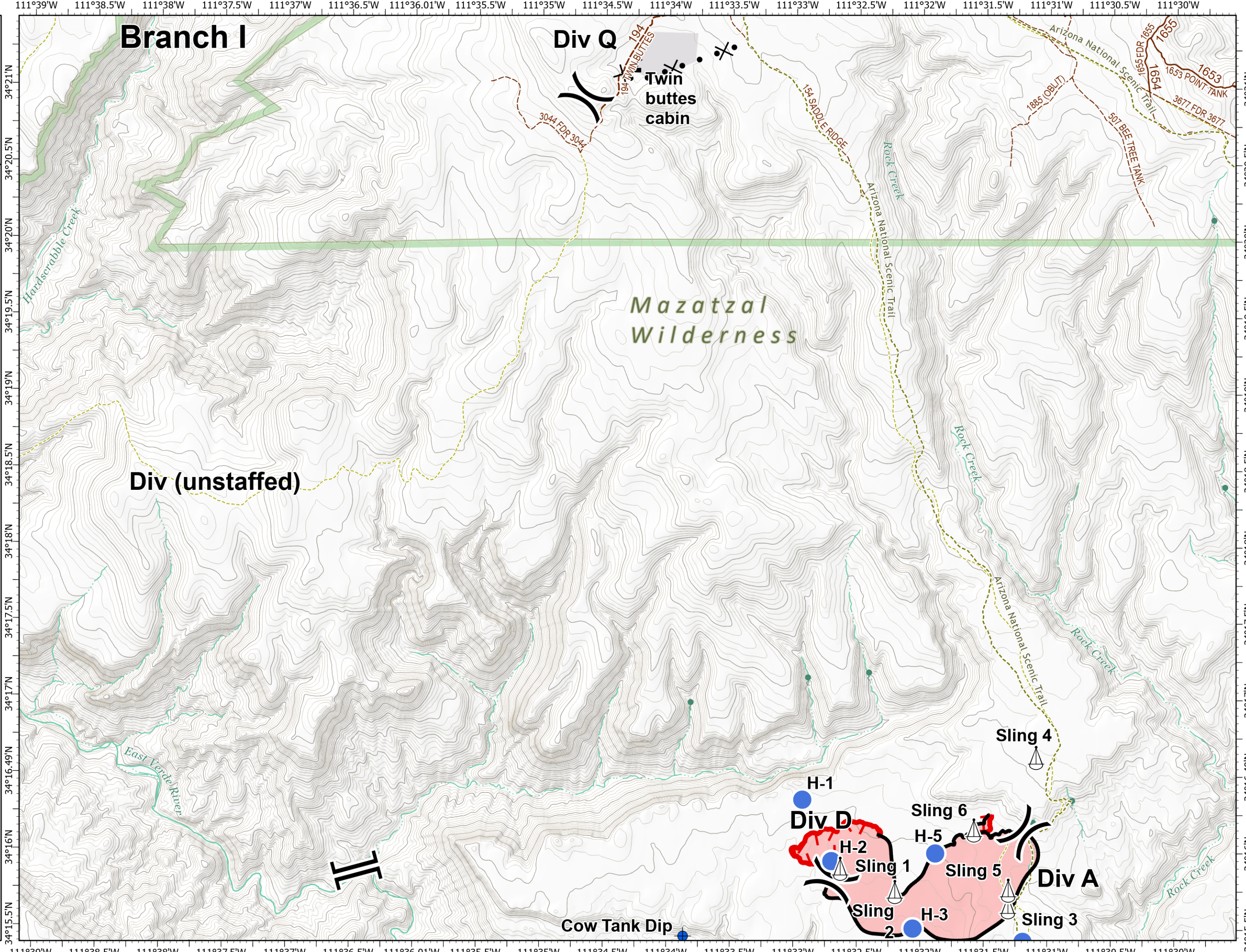


- Dip Site
- Helispot
- Sling Site
- Division Break
- Branch Break
- Uncontrolled Fire Edge
- Contained Line
- Wildfire Daily Fire Perimeter
- Trail
- Structure Outlines
- Wilderness



kgaz  
7/12/2020 1023  
Acres from IR and GPS  
North American 1983 Datum. LatLong Grid

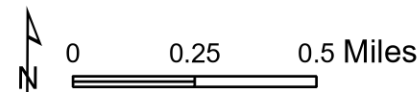
- 0 0.25 0.5 Miles
- Dip Site
  - Drop Point
  - Helispot
  - △ Sling Site
  - ▲ Value at Risk
  - ) Division Break
  - | Branch Break
  - ▬ Uncontrolled Fire Edge
  - ▬ Contained Line
  - X Proposed Dozer Line
  - ▬ Wildfire Daily Fire Perimeter
  - ▬ Local Road
  - ▬ 4WD
  - ▬ Trail
  - ▬ Structure Outlines
  - ▬ Private Parcels
  - ▬ Wilderness



# IAP

Polles  
AZ-TNF-001830  
7/12/2020 Day  
Div Q - Page 4

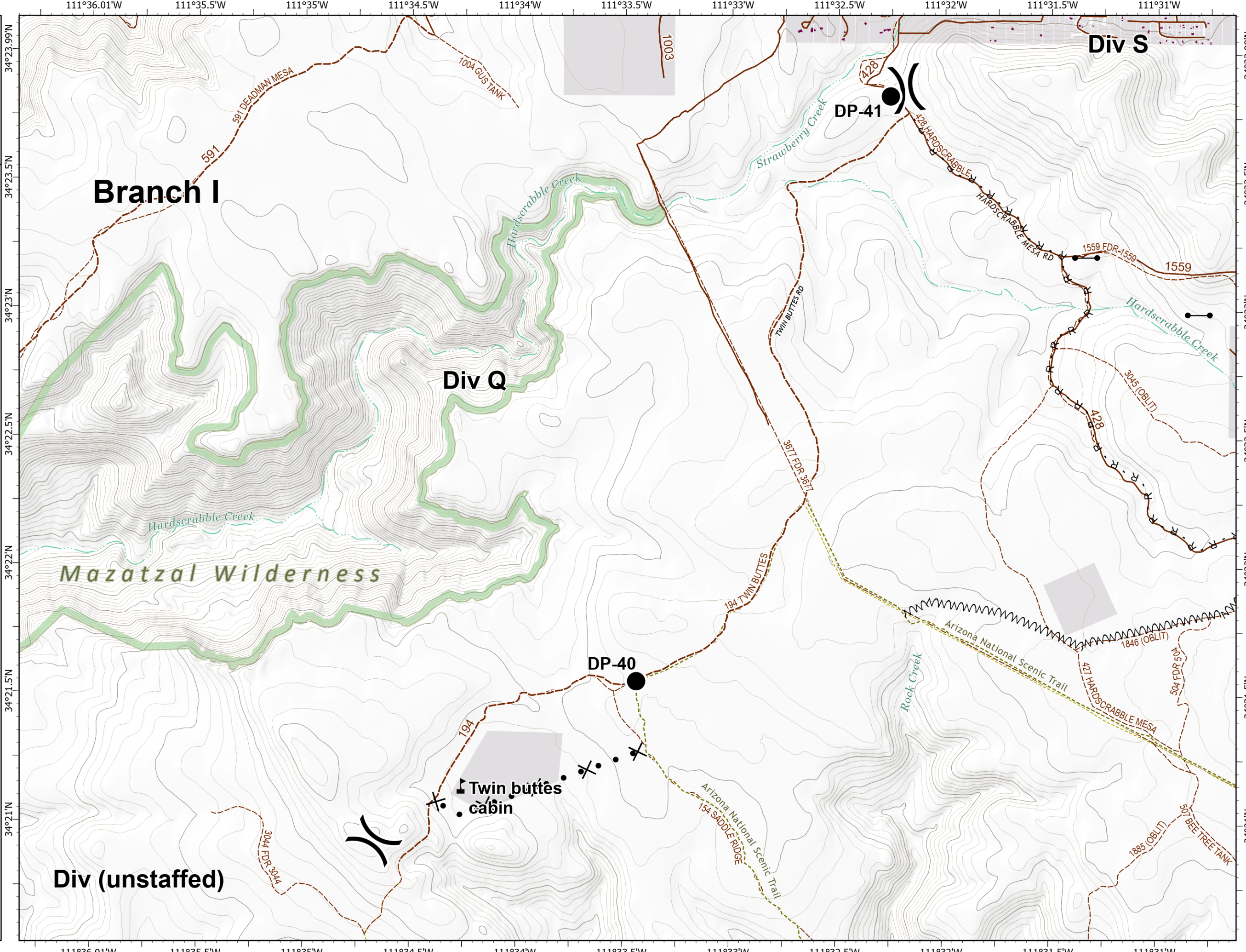
624 acres at 7/11/2020 @ 1800



- Drop Point
- Gate
- ▲ Value at Risk
- ) Division Break
- R Road as Completed Line
- X• Proposed Dozer Line
- M Fire Break Planned or Incomplete
- Local Road
- - - 4WD
- - - Trail
- Structure Outlines
- Private Parcels
- Wilderness



kgaiz  
7/12/2020 1023  
Acres from IR and GPS  
North American 1983 Datum. Lat/Long Grid



## Branch I

## Div Q

## Div S

## Mazatzal Wilderness

## Div (unstaffed)

Twin buttes  
cabin

DP-41

DP-40

111°36.01'W 111°35.5'W 111°35'W 111°34.5'W 111°34'W 111°33.5'W 111°33'W 111°32.5'W 111°32'W 111°31.5'W 111°31'W

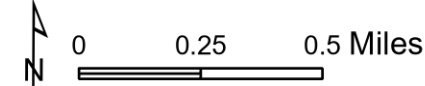
34°23.99'N 34°23.5'N 34°23'N 34°22.5'N 34°22'N 34°21.5'N 34°21'N

34°23.99'N 34°23.5'N 34°23'N 34°22.5'N 34°22'N 34°21.5'N 34°21'N

# IAP

Polles  
AZ-TNF-001830  
7/12/2020 Day  
Div S - Page 5

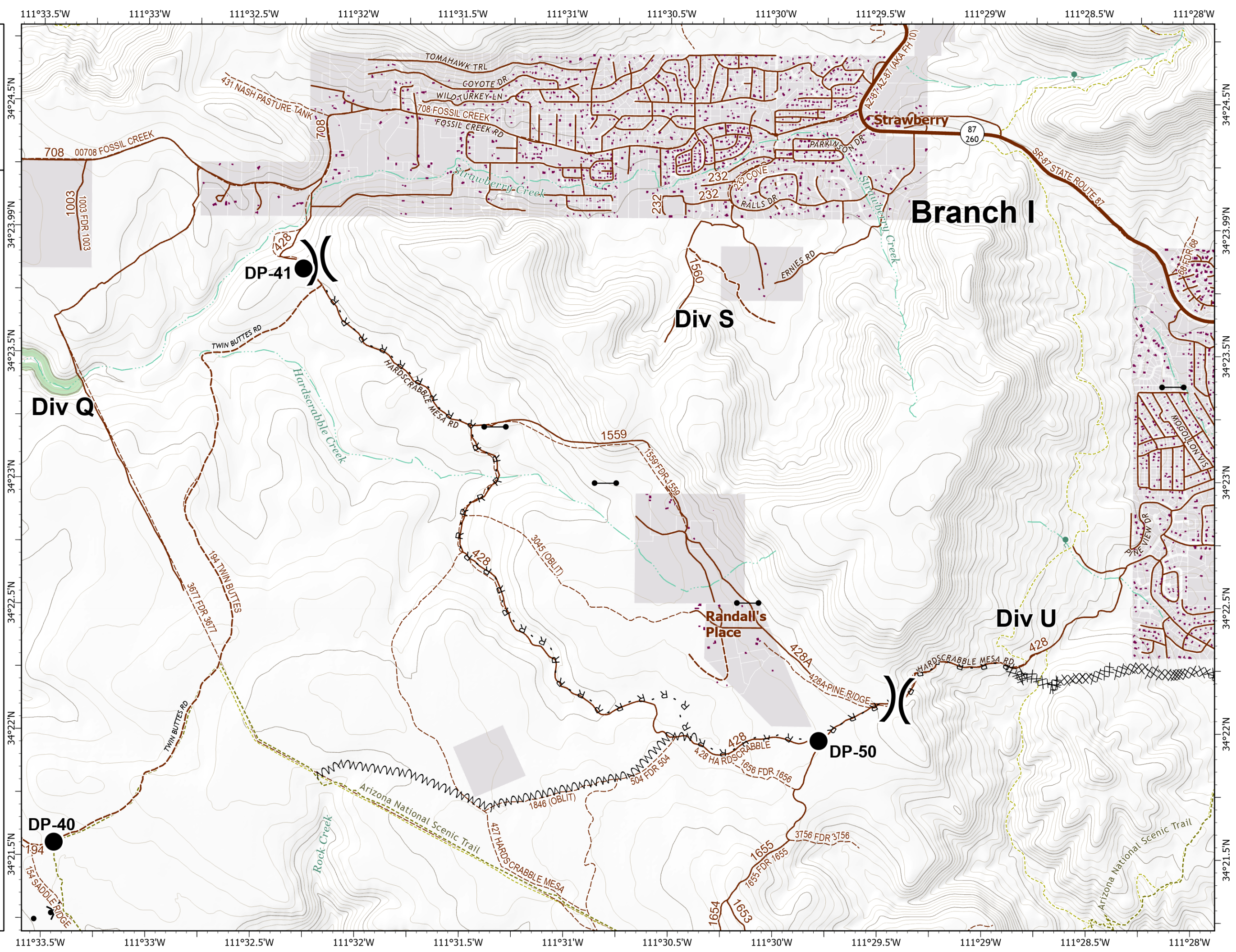
624 acres at 7/11/2020 @ 1800



- Drop Point
- Gate
- ) Division Break
- ×× Completed Dozer Line
- R Road as Completed Line
- X• Proposed Dozer Line
- M Fire Break Planned or Incomplete
- Local Connector
- Local Road
- 4WD
- Trail
- Structure Outlines
- Private Parcels
- Wilderness



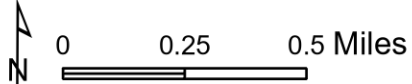
kgaz  
7/12/2020 1024  
Acres from IR and GPS  
North American 1983 Datum, LatLong Grid



# IAP

Polles  
AZ-TNF-001830  
7/12/2020 Day  
Div U - Page 6

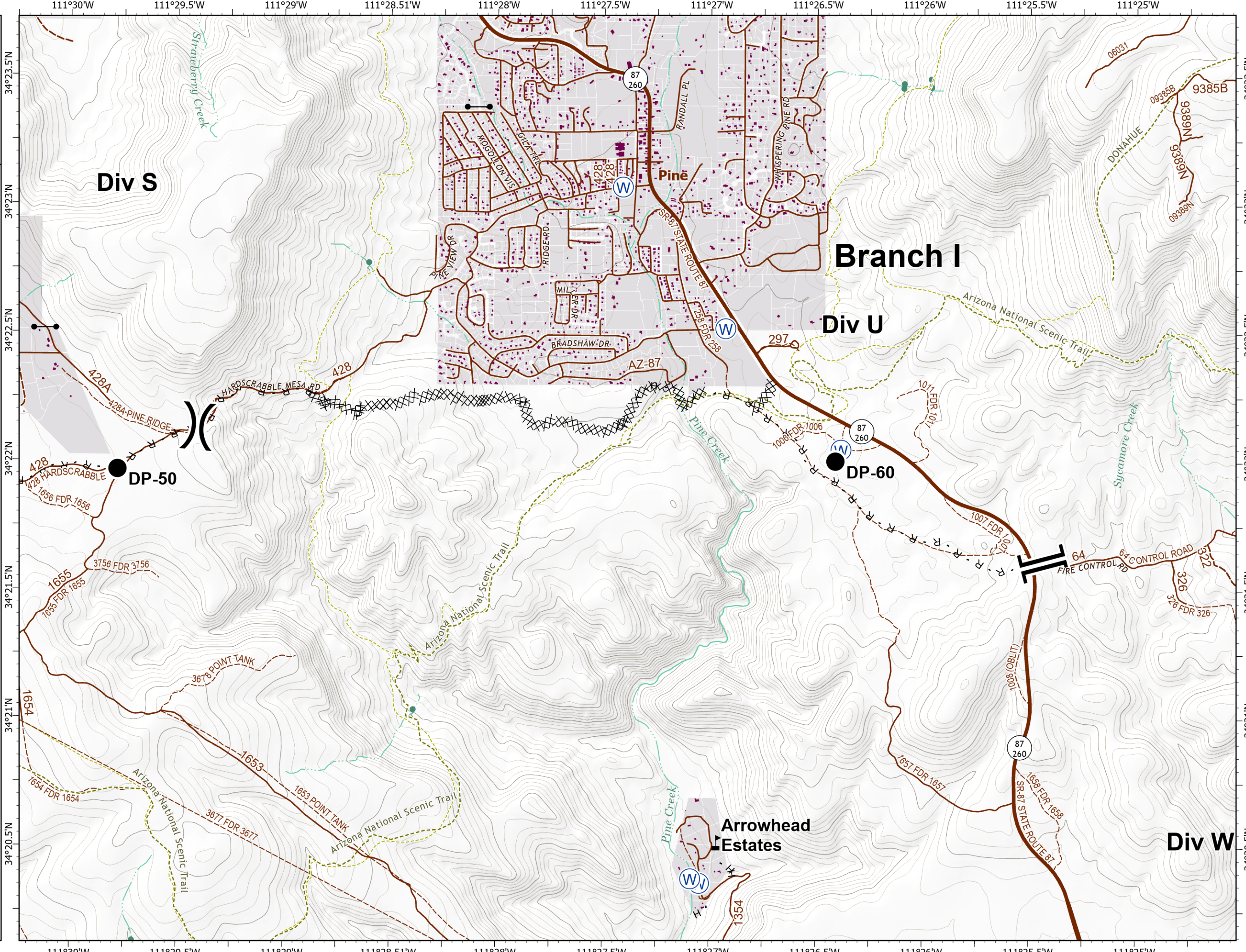
624 acres at 7/11/2020 @ 1800



- Drop Point
- Gate
- ⊙ Water Source
- ⚠ Value at Risk
- ) Division Break
- || Branch Break
- ×× Completed Dozer Line
- H Completed Hand Line
- R Road as Completed Line
- Planned Fire Line
- Local Connector
- Local Road
- - - 4WD
- - - Trail
- Structure Outlines
- Private Parcels

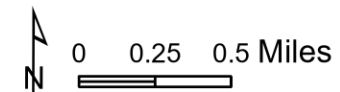


kgaz  
7/12/2020 1024  
Acres from IR and GPS  
North American 1983 Datum, Lat/Long Grid



# IAP

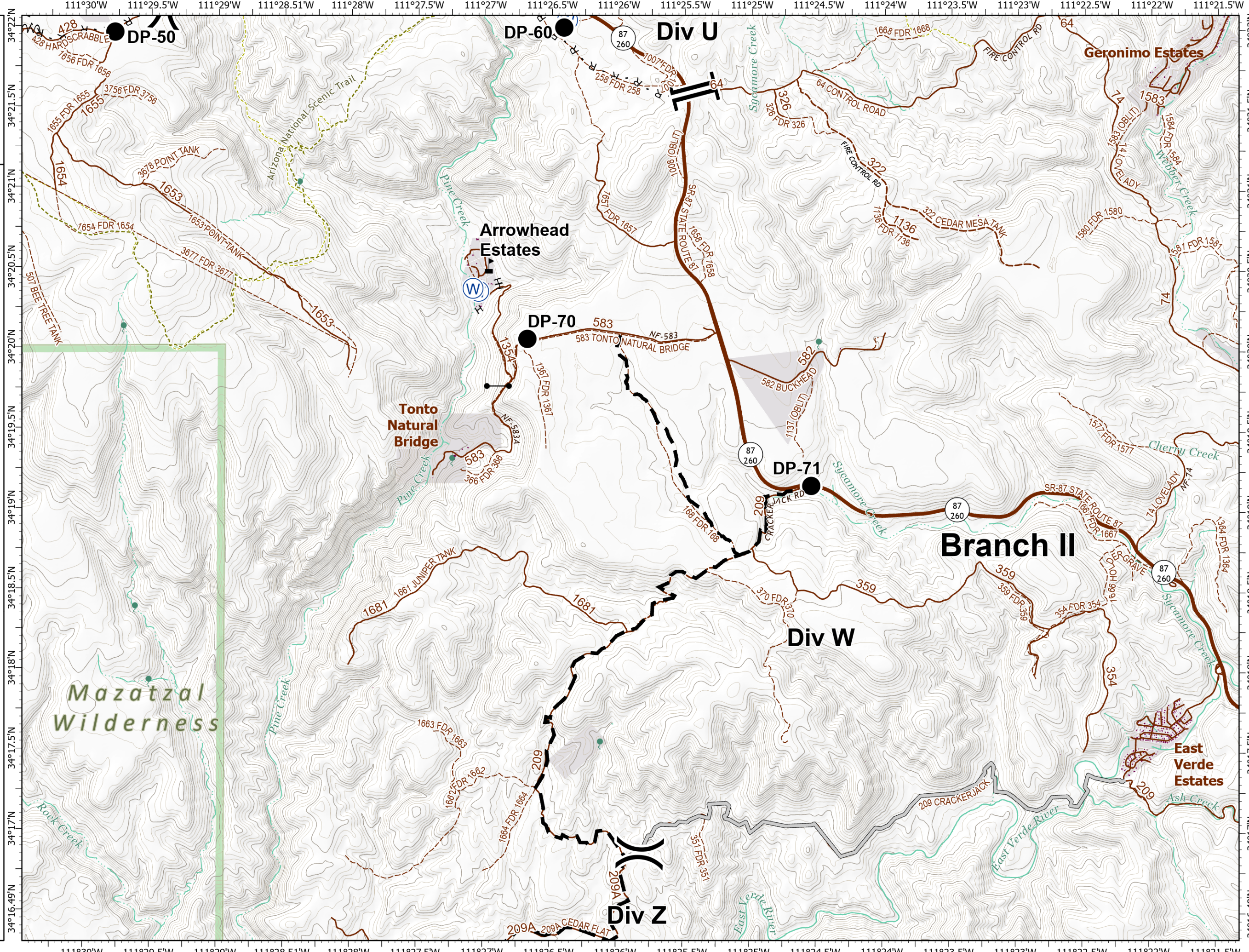
Polles  
AZ-TNF-001830  
7/12/2020 Day  
Div W - Page 7  
624 acres at 7/11/2020 @ 1800



- Drop Point
- Gate
- ⊙ Water Source
- ⚡ Value at Risk
- ) Division Break
- || Branch Break
- ⊗ Completed Dozer Line
- H Completed Hand Line
- R Road as Completed Line
- Access or Improved Road
- ~ Fire Break Planned or Incomplete
- Planned Fire Line
- Local Connector
- Local Road
- - - 4WD
- - - Trail
- Structure Outlines
- Private Parcels
- Wilderness

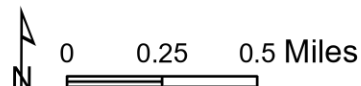


kgaz  
7/12/2020 1024  
Acres from IR and GPS  
North American 1983 Datum. Lat/Long Grid



# IAP

Polles  
AZ-TNF-001830  
7/12/2020 Day  
Div Z - Page 8  
624 acres at 7/11/2020 @ 1800



- Drop Point
- Lookout
- ⊙ Water Source
- ⌘ Division Break
- Access or Improved Road
- Planned Fire Line
- Local Road
- - - 4WD
- Structure Outlines
- Private Parcels
- Wilderness



kgaz  
7/12/2020 1024  
Acres from IR and GPS  
North American 1983 Datum, Lat/Long Grid

