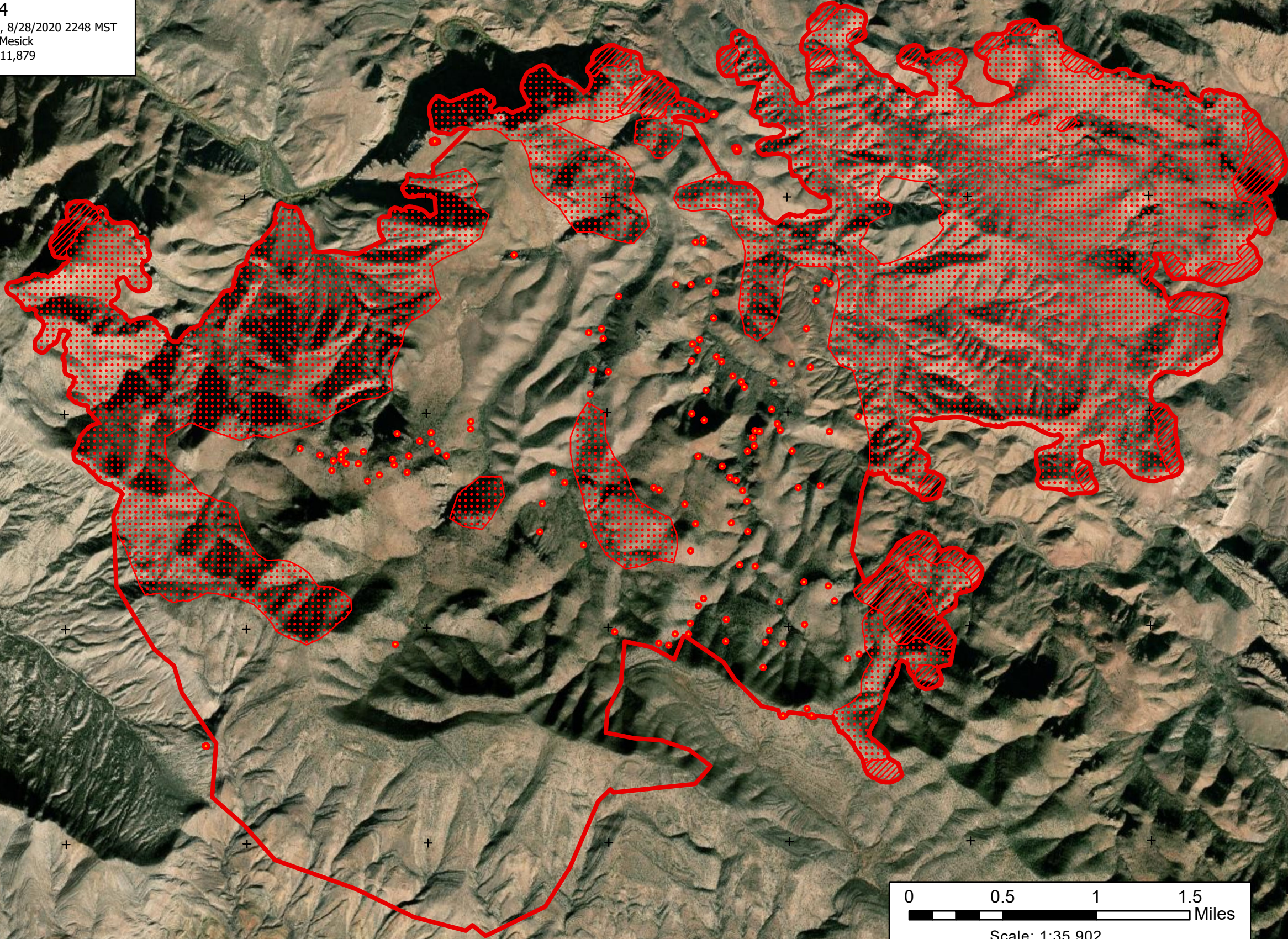


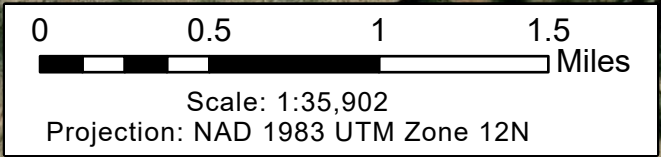
110°38'W 110°37'W 110°36'W 110°35'W 110°34'W 110°33'W 110°32'W 110°31'W 110°30'W 110°29'W

Rockhouse Fire
AZ-SCA-002574
Infrared Heat Sources, 8/28/2020 2248 MST
IR Interpreter: Julian Mesick
IR Interpreted Acres: 11,879



33°9'N
33°8'N
33°7'N
33°6'N
33°5'N

33°9'N
33°8'N
33°7'N
33°6'N
33°5'N



- Heat Perimeter
- Intense Heat
- Scattered Heat
- Isolated Heat Sources



110°38'W 110°37'W 110°36'W 110°35'W 110°34'W 110°33'W 110°32'W 110°31'W 110°30'W 110°29'W

Source: Esri, Maxar, GeoEye, Earthstar Geographics, CNES/Airbus DS, USDA, USGS, AeroGRID, IGN, and the GIS User Community