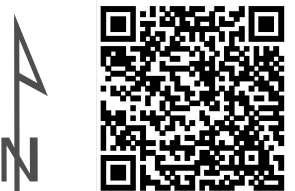


Salt, Gin, and Griffin Fires  
 IAP Map  
 AZ-TNF-002511  
 Index Page

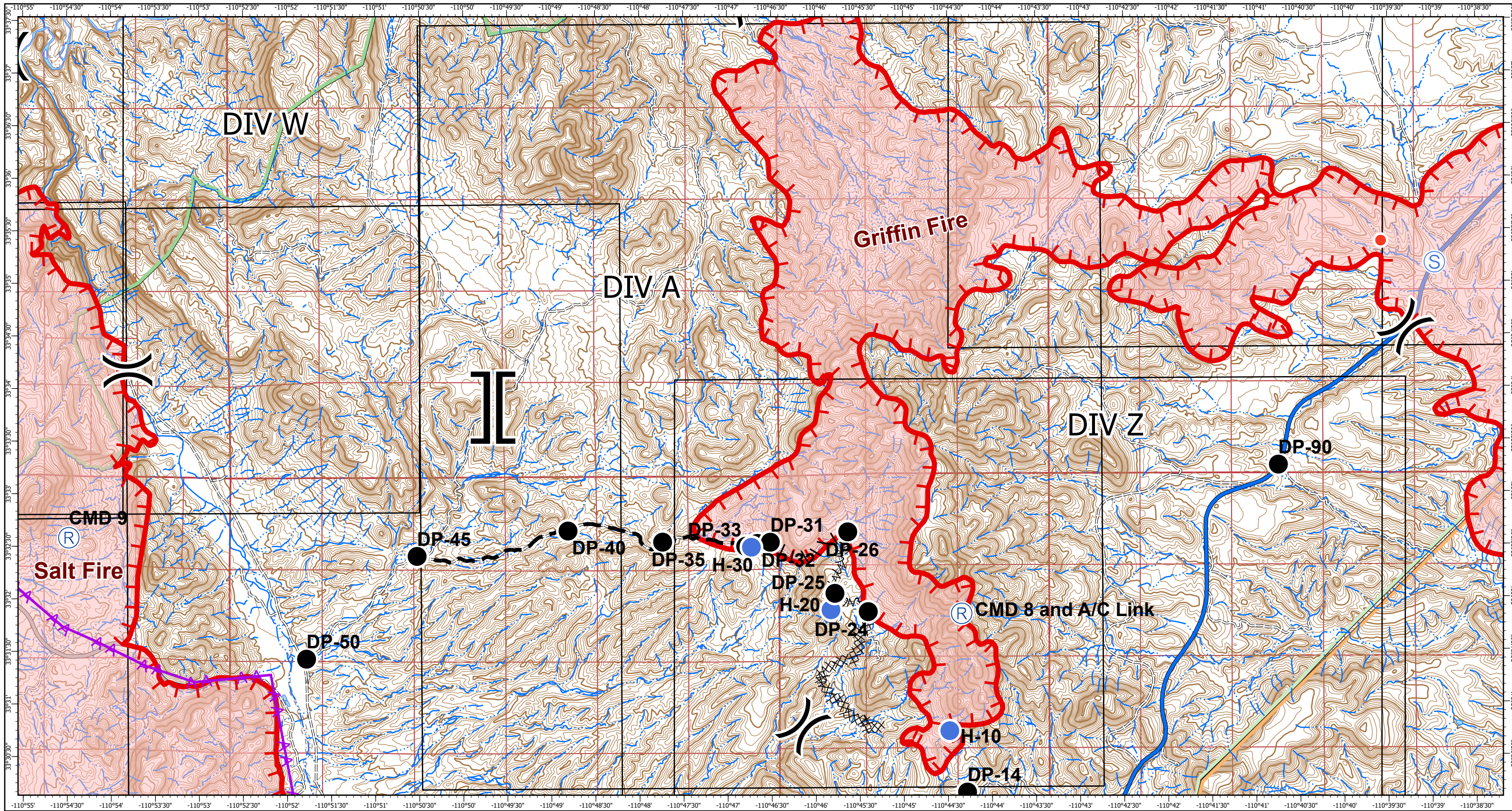


- ◆ Dip Site
- Drop Point
- Unimproved Landing Area
- Helispot
- Hot Spot
- Incident Command Post
- Ⓡ Repeater
- Ⓢ Staging Area
- ⚡ Value at Risk
- )( Division Break
- || Branch Break
- ▬ Uncontrolled Fire Edge
- xx xx Completed Dozer Line
- | Proposed Burnout
- m m Fire Break Planned or Incomplete
- ▬ Planned Fire Line
- ⚡ Aerial Hazard
- ▬ Management Action Point
- DIV\_Grid\_Index

Salt: 20,288 acres  
 Gin: 7,766 acres  
 Griffin: 30,619 acres

NAD\_1983\_UTM\_Zone\_12N  
 Created: 8/22/2020 5:55 PM by ehege





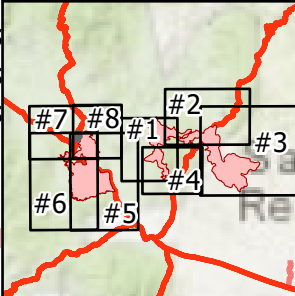
Salt, Gin, and Griffin Fires  
 IAP Map  
 AZ-TNF-002511  
 Page #1  
 DIV A

8/22/2020 Day  
 0 0.5 1 2 Miles

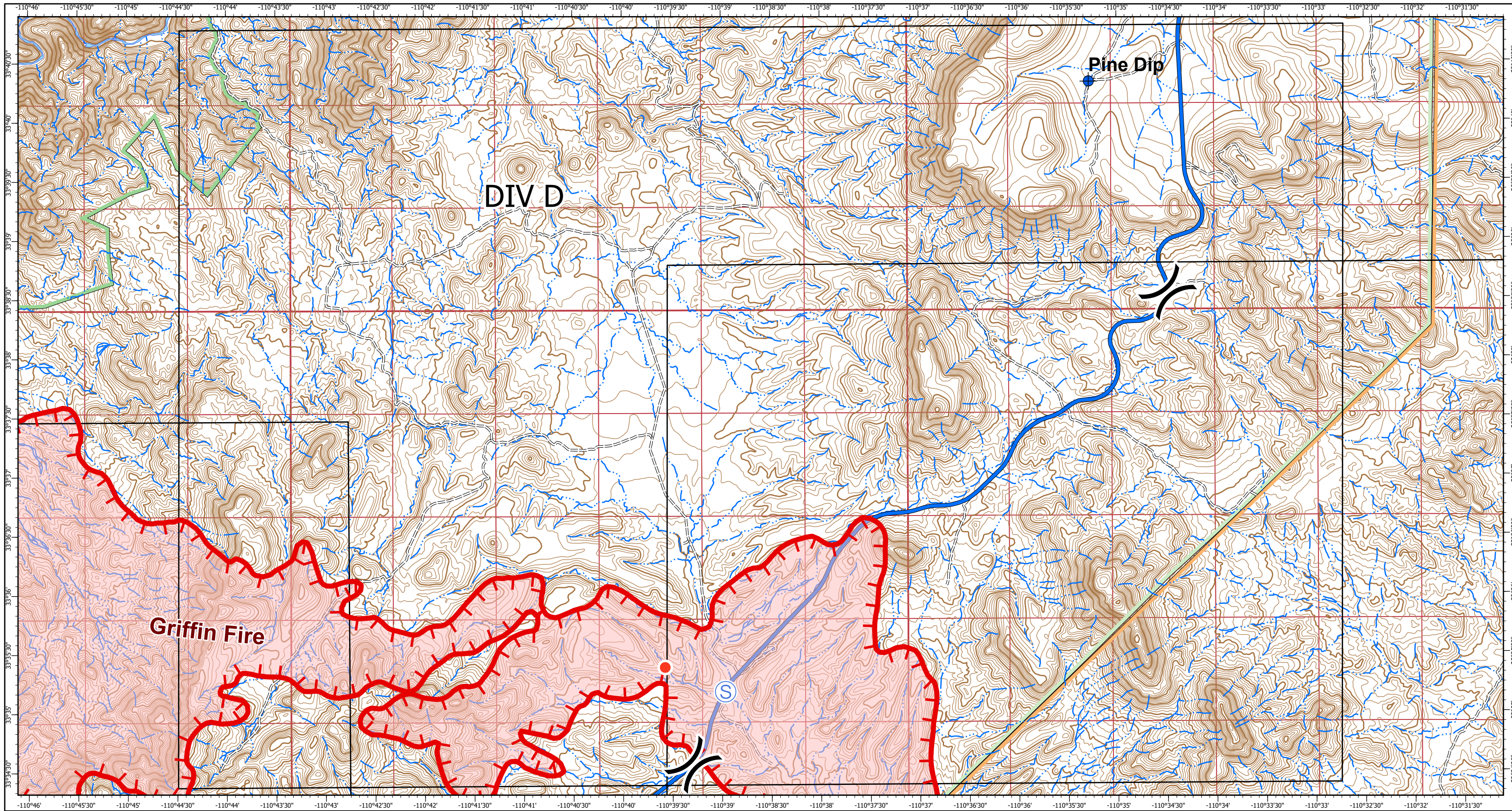


- Drop Point
- Helispot
- Hot Spot
- Ⓡ Repeater
- Ⓢ Staging Area
- ) ( Division Break
- ] [ Branch Break
- Uncontrolled Fire Edge
- ⌘ Completed Dozer Line
- | Proposed Burnout
- ∧ Fire Break Planned or Incomplete
- Planned Fire Line
- ⚡ Aerial Hazard
- DIV\_Grid\_Index
- Wildfire Daily Fire Perimeter
- Transportation
- Controlled access
- Highway or ramp
- Local connector
- Local or 4WD road
- ≡ Tunnel
- Ferry

Salt: 20,288 acres  
 Gin: 7,766 acres  
 Griffin: 30,619 acres



NAD\_1983\_UTM\_Zone\_12N  
 Created: 8/22/2020 4:52 PM by ehege



Salt, Gin, and Griffin Fires  
 IAP Map  
 AZ-TNF-002511  
 Page #2  
 DIV D

8/22/2020 Day  
 0 0.5 1 2 Miles



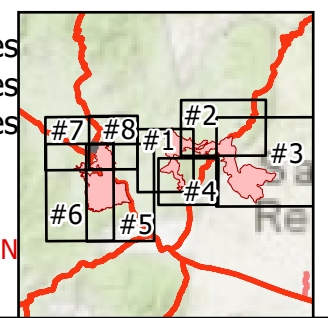
- ◆ Dip Site
- Hot Spot
- ⊙ Staging Area
- ) ( Division Break
- Uncontrolled Fire Edge

- DIV\_Grid\_Index
  - Wildfire Daily Fire Perimeter
- Transportation**
- Controlled access

- Highway or ramp
- Local connector
- === Local or 4WD road
- ≡≡≡ Tunnel
- - - Ferry

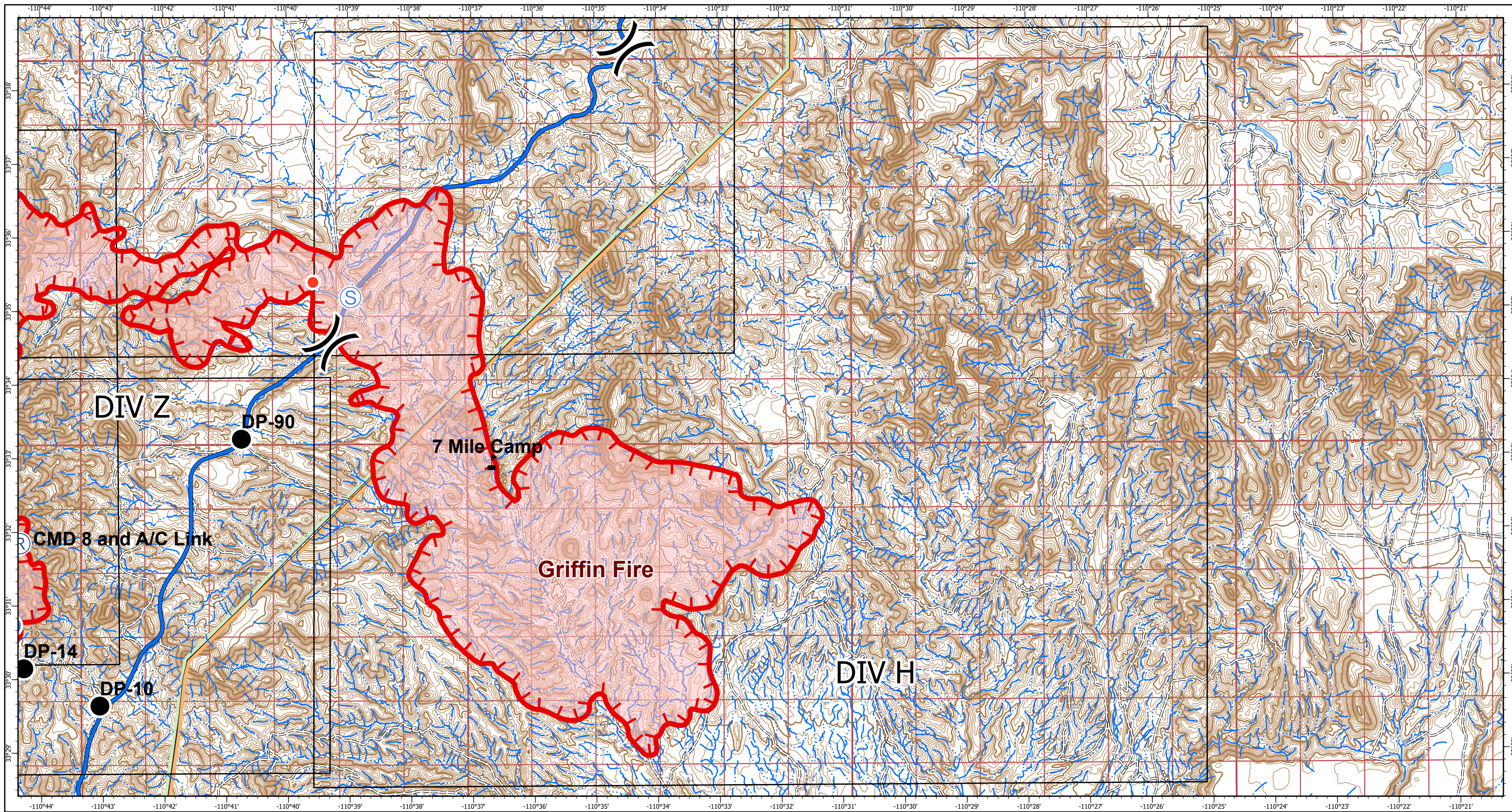
Salt: 20,288 acres  
 Gin: 7,766 acres  
 Griffin: 30,619 acres

NAD\_1983\_UTM\_Zone\_12N  
 Created: 8/22/2020 4:53 PM by ehege



Southwest Area

Incident Management Team 5

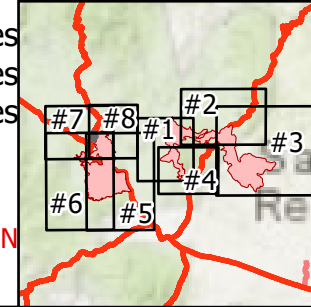


Salt, Gin, and Griffin Fires  
 IAP Map  
 AZ-TNF-002511  
 Page #3  
 DIV H

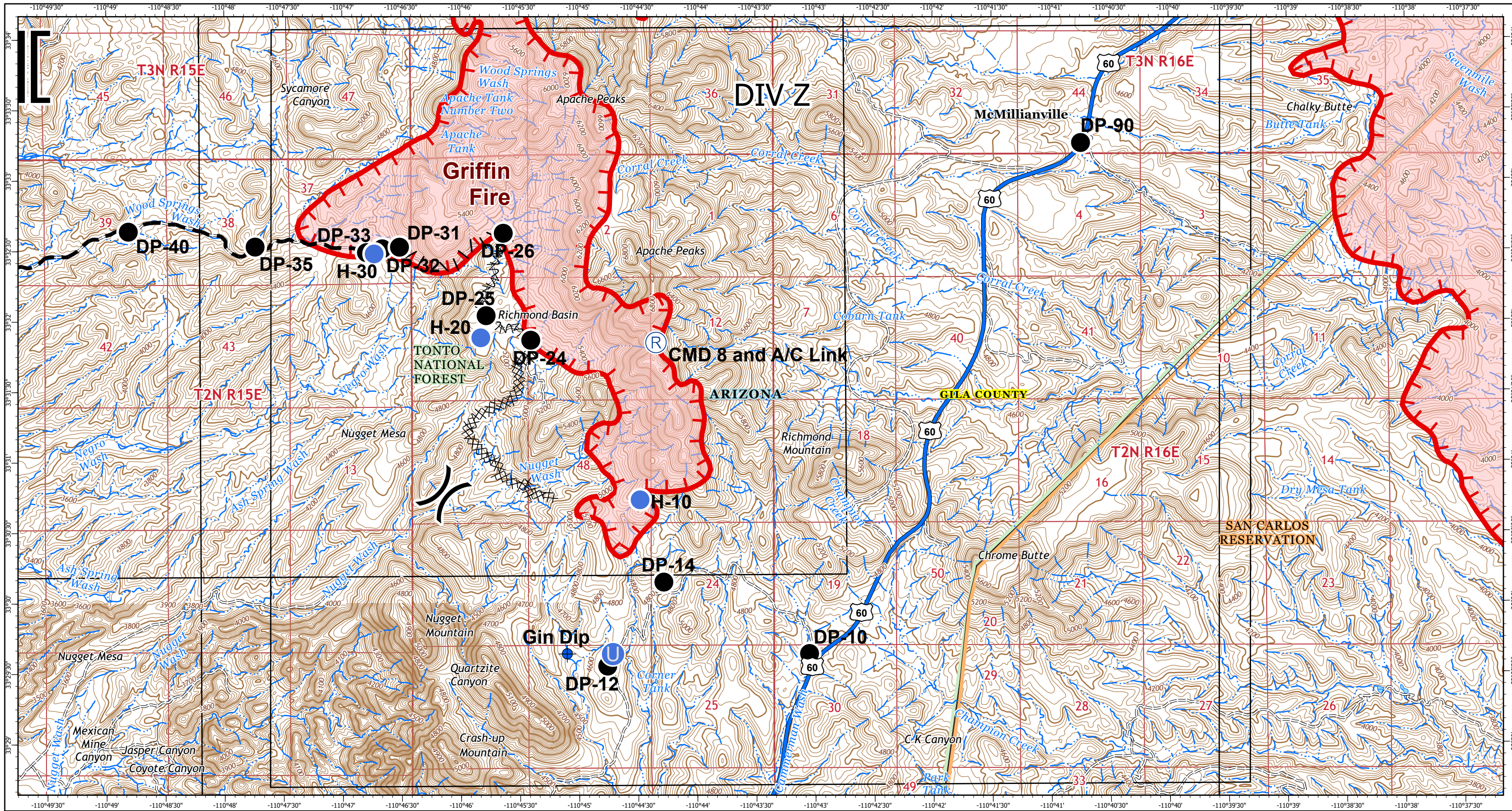


- Drop Point
- Unimproved Landing Area
- Helispot
- Hot Spot
- Ⓡ Repeater
- Ⓢ Staging Area
- ⚠ Value at Risk
- ) ( Division Break
- Uncontrolled Fire Edge
- DIV\_Grid\_Index
- Wildfire Daily Fire Perimeter
- Transportation
- Controlled access
- Highway or ramp
- Local connector
- Local or 4WD road
- ≡ Tunnel
- Ferry

Salt: 20,288 acres  
 Gin: 7,766 acres  
 Griffin: 30,619 acres



NAD\_1983\_UTM\_Zone\_12N  
 Created: 8/22/2020 4:54 PM by ehege



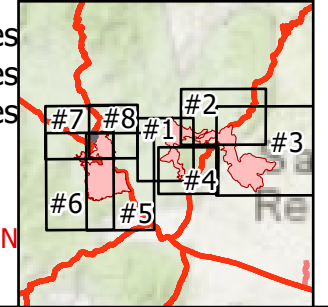
Salt, Gin, and Griffin Fires  
 IAP Map  
 AZ-TNF-002511  
 Page #4  
 DIV Z

8/22/2020 Day  
 0 0.5 1 2 Miles

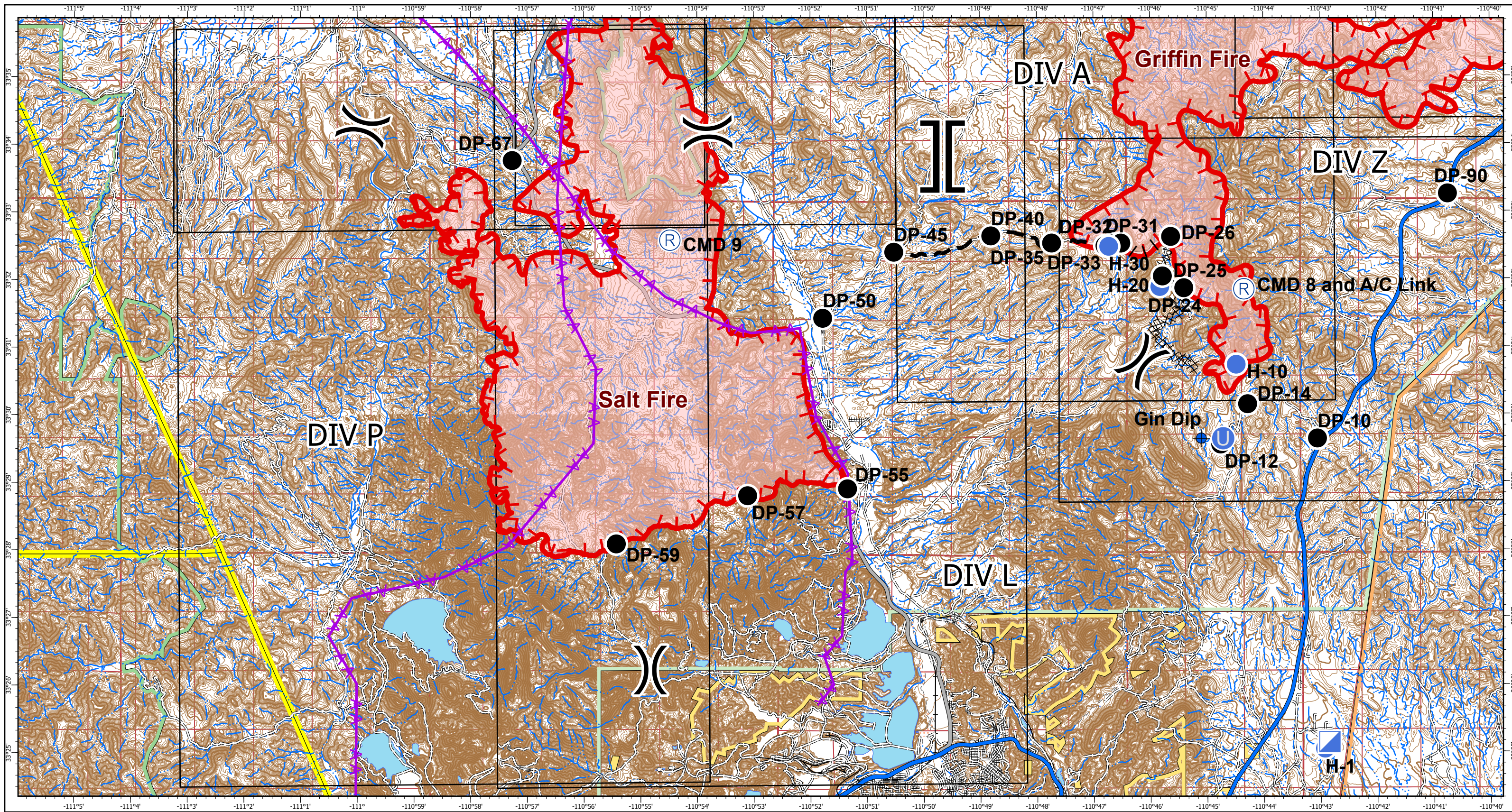


- |                           |                                    |                     |
|---------------------------|------------------------------------|---------------------|
| ◆ Dip Site                | ▬ Uncontrolled Fire Edge           | — Transportation    |
| ● Drop Point              | XX Completed Dozer Line            | ▬ Controlled access |
| • Unimproved Landing Area | Proposed Burnout                   | ▬ Highway or ramp   |
| • Helispot                | ∩ Fire Break Planned or Incomplete | ▬ Local connector   |
| Ⓡ Repeater                | ▬ Planned Fire Line                | ▬ Local or 4WD road |
| ) Division Break          | ▭ DIV_Grid_Index                   | ▬ Tunnel            |
| [ Branch Break            | ▭ Wildfire Daily Fire Perimeter    | ▬ Ferry             |

Salt: 20,288 acres  
 Gin: 7,766 acres  
 Griffin: 30,619 acres



NAD\_1983\_UTM\_Zone\_12N  
 Created: 8/22/2020 4:55 PM by ehege

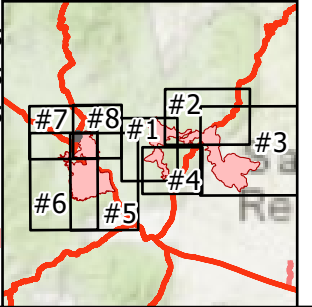


Salt, Gin, and Griffin Fires  
 IAP Map  
 AZ-TNF-002511  
 Page #5  
 DIV L

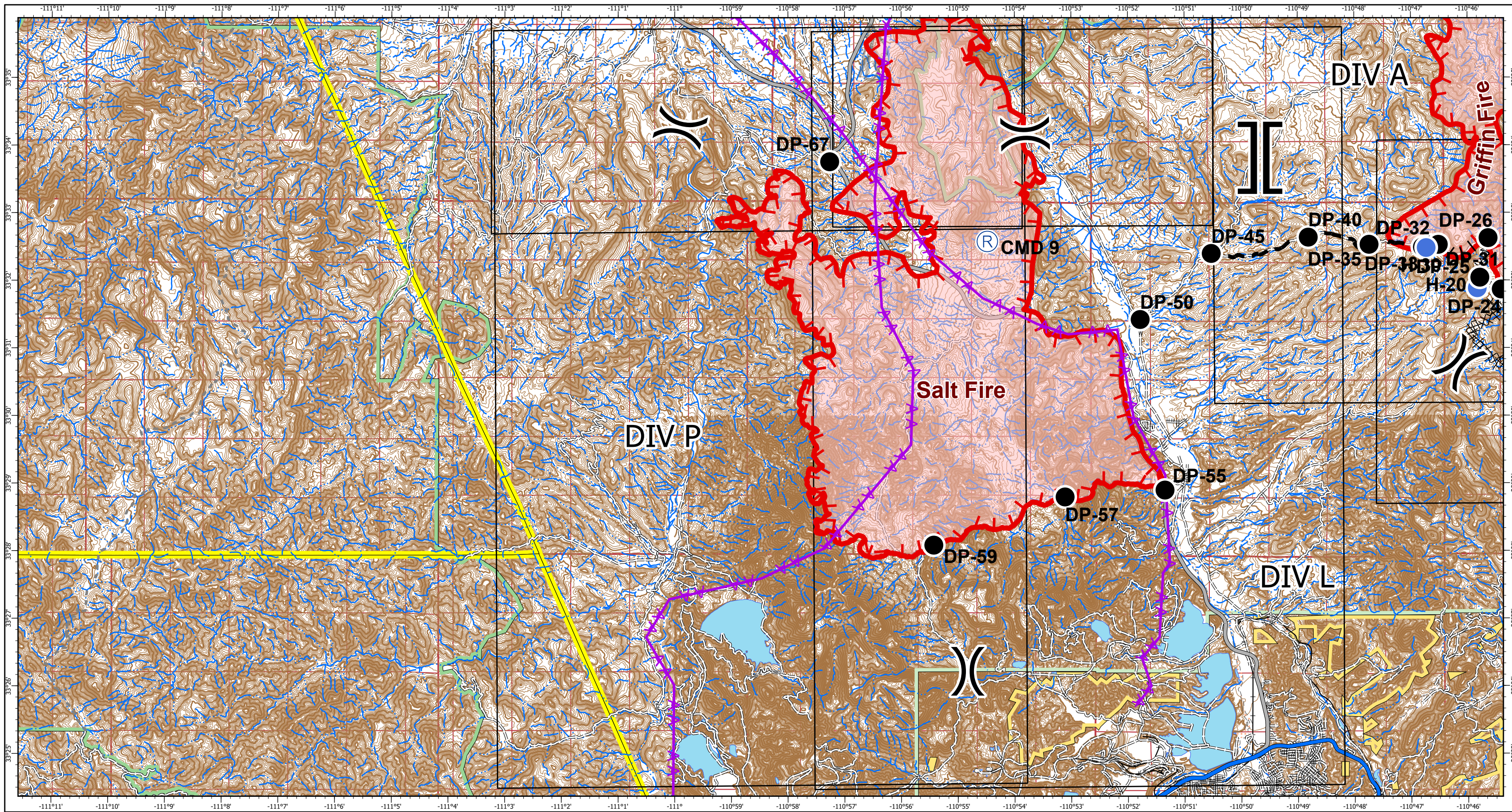


- ◆ Dip Site
- Drop Point
- Unimproved Landing Area
- Helispot
- Hot Spot
- Ⓜ Incident Command Post
- Ⓜ Repeater
- ) ( Division Break
- ] [ Branch Break
- Uncontrolled Fire Edge
- XX Completed Dozer Line
- | Proposed Burnout
- ^ Fire Break Planned or Incomplete
- Planned Fire Line
- Aerial Hazard
- DIV\_Grid\_Index
- Wildfire Daily Fire Perimeter
- Other
- Transportation**
- Controlled access
- Highway or ramp
- Local connector
- Local or 4WD road
- Tunnel
- Ferry

Salt: 20,288 acres  
 Gin: 7,766 acres  
 Griffin: 30,619 acres



NAD\_1983\_UTM\_Zone\_12N  
 Created: 8/22/2020 4:56 PM by ehege



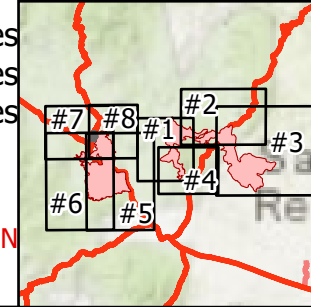
Salt, Gin, and Griffin Fires  
 IAP Map  
 AZ-TNF-002511  
 Page #6  
 DIV P

8/22/2020 Day  
 0 1 2 4 Miles

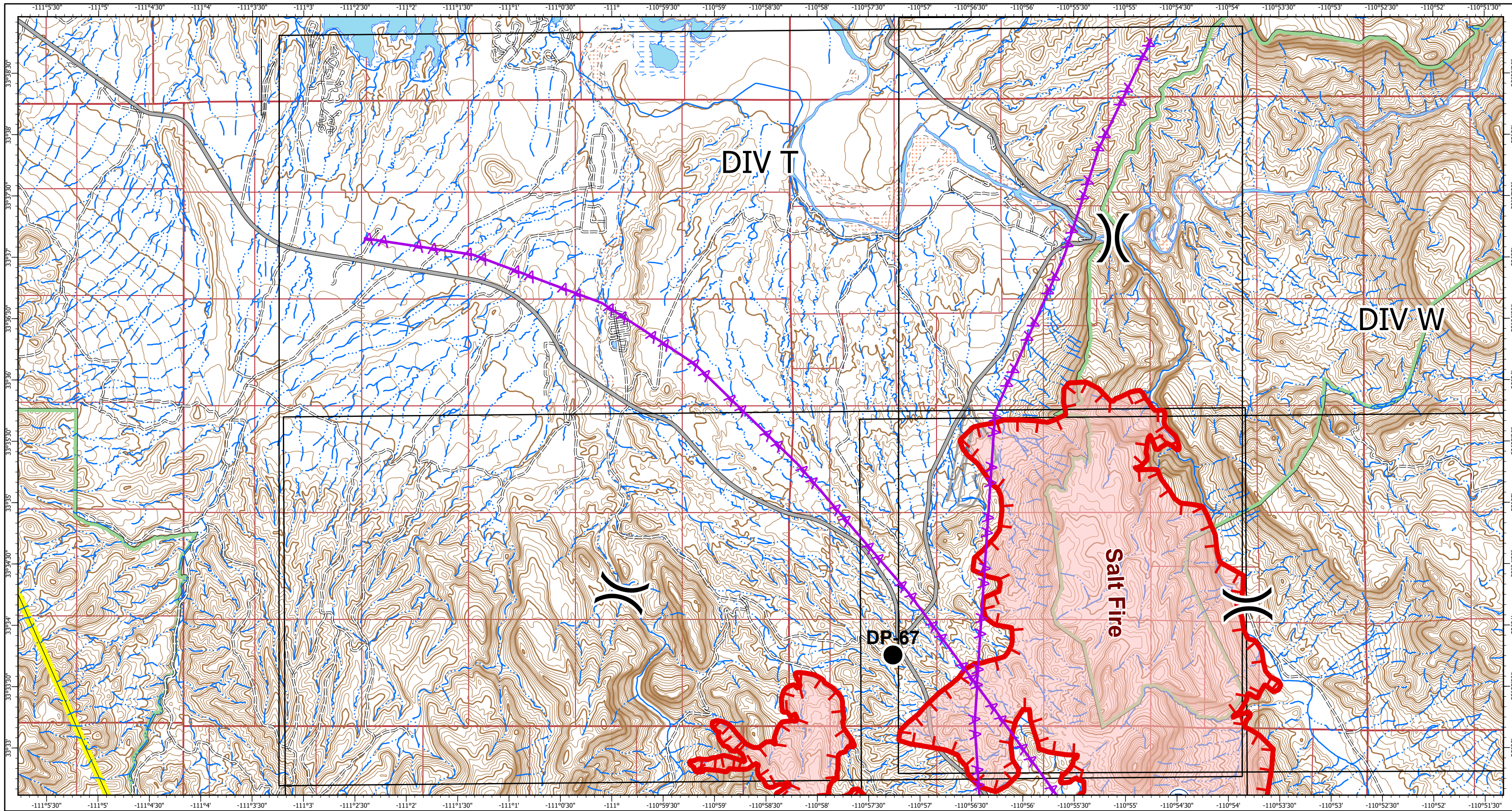


- |                          |                                    |                     |
|--------------------------|------------------------------------|---------------------|
| ◆ Dip Site               | Proposed Burnout                   | Transportation      |
| ● Drop Point             | ⌒ Fire Break Planned or Incomplete | — Controlled access |
| • Helispot               | — Planned Fire Line                | — Highway or ramp   |
| Ⓞ Repeater               | ✶ Aerial Hazard                    | — Local connector   |
| ) Division Break         | ▭ DIV_Grid_Index                   | — Local or 4WD road |
| ] Branch Break           | ▭ Wildfire Daily Fire Perimeter    | — Tunnel            |
| — Uncontrolled Fire Edge | ▭ Other                            | — Ferry             |
| ⊗ Completed Dozer Line   |                                    |                     |

Salt: 20,288 acres  
 Gin: 7,766 acres  
 Griffin: 30,619 acres



NAD\_1983\_UTM\_Zone\_12N  
 Created: 8/22/2020 4:57 PM by ehege



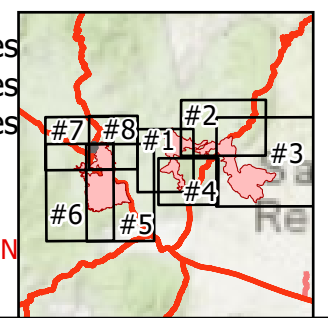
Salt, Gin, and Griffin Fires  
 IAP Map  
 AZ-TNF-002511  
 Page #7  
 DIV T



- Drop Point
- Ⓡ Repeater
- ) Division Break
- Uncontrolled Fire Edge
- ▲ Aerial Hazard
- DIV\_Grid\_Index
- Wildfire Daily Fire Perimeter
- Other
- Transportation
- Controlled access
- Highway or ramp
- Local connector
- Local or 4WD road
- Tunnel
- Ferry

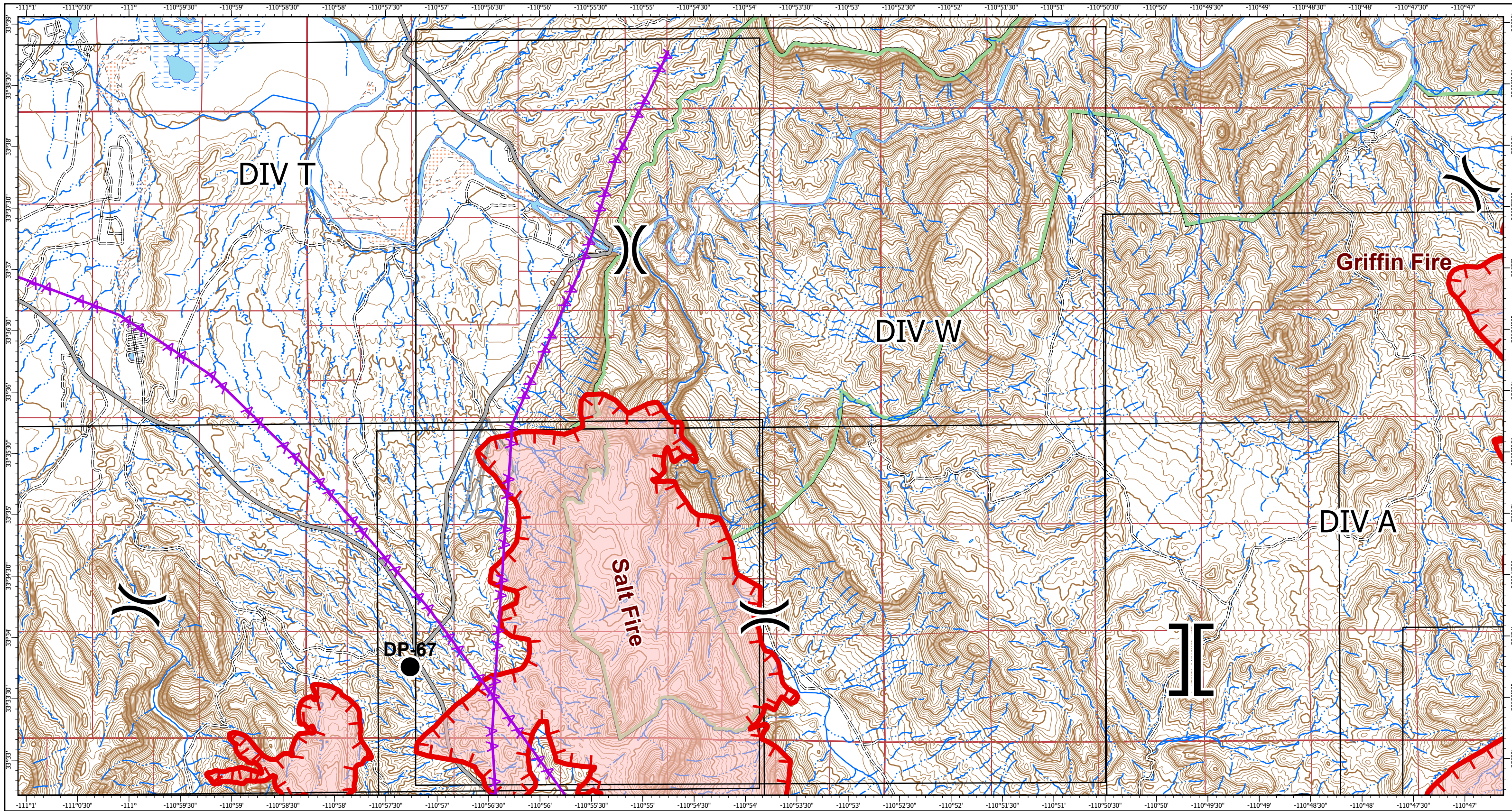
Salt: 20,288 acres  
 Gin: 7,766 acres  
 Griffin: 30,619 acres

NAD\_1983\_UTM\_Zone\_12N  
 Created: 8/22/2020 4:57 PM by ehege



Southwest Area  
  
 Incident Management Team 5



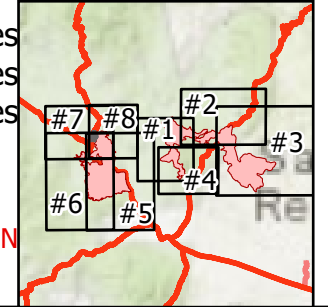


Salt, Gin, and Griffin Fires  
 IAP Map  
 AZ-TNF-002511  
 Page #8  
 DIV W



- Drop Point
- Ⓡ Repeater
- ) ( Division Break
- ] [ Branch Break
- Uncontrolled Fire Edge
- ■ Planned Fire Line
- A Aerial Hazard
- DIV\_Grid\_Index
- Wildfire Daily Fire Perimeter
- Other
- Transportation
- Controlled access
- Highway or ramp
- Local connector
- == Local or 4WD road
- ≡≡ Tunnel
- Ferry

Salt: 20,288 acres  
 Gin: 7,766 acres  
 Griffin: 30,619 acres



NAD\_1983\_UTM\_Zone\_12N  
 Created: 8/22/2020 4:58 PM by ehege