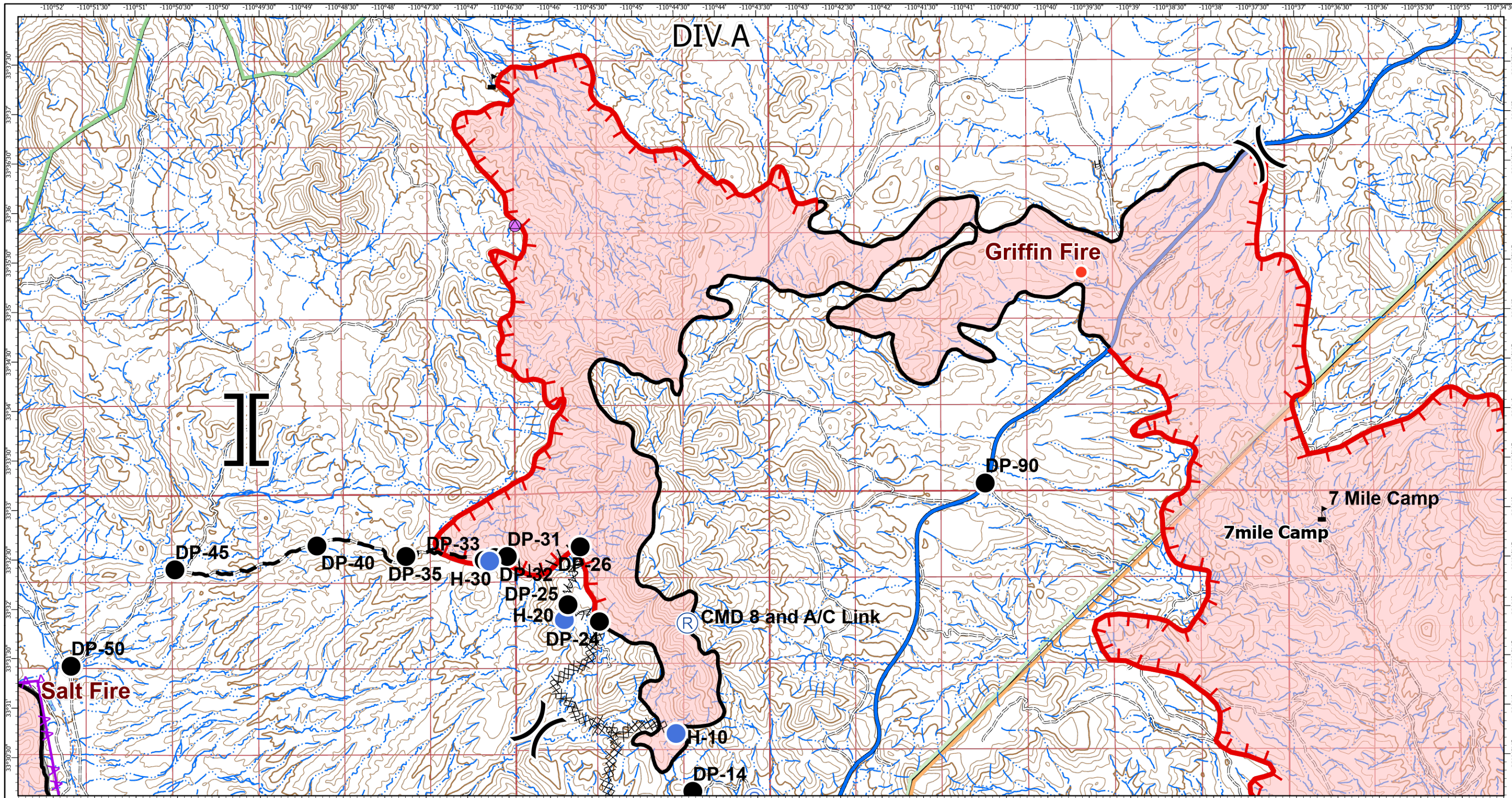


Salt and Griffin Fires  
 IAP Map  
 AZ-TNF-002511  
 Index Page



- ◆ Dip Site
- Drop Point
- Unimproved Landing Area
- Helispot
- Hot Spot
- ▢ Incident Command Post
- Repair Point
- Ⓡ Repeater
- Ⓢ Staging Area
- Ⓜ Water Source
- ⚡ Value at Risk
- Other
- ) Division Break
- | Branch Break
- ▬ Uncontrolled Fire Edge
- ▬ Contained Line
- ⊗ Completed Dozer Line
- H Completed Hand Line
- | Proposed Burnout
- ⌒ Fire Break Planned or Incomplete
- ▬ Planned Fire Line
- ★ Aerial Hazard
- DIV\_Grid\_Index
- San Carlos Ranch Subdivision

Salt: 20,809 acres  
 Griffin: 38,069 acres  
 NAD\_1983\_UTM\_Zone\_12N  
 Created: 8/24/2020 9:56 PM by frankwilliams



Salt and Griffin Fires  
 IAP Map  
 AZ-TNF-002511  
 Page #1  
 DIV A

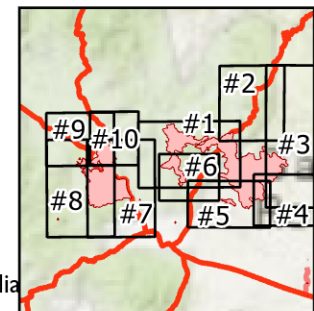
8/25/2020 Day  
 0 0.5 1 2 Miles

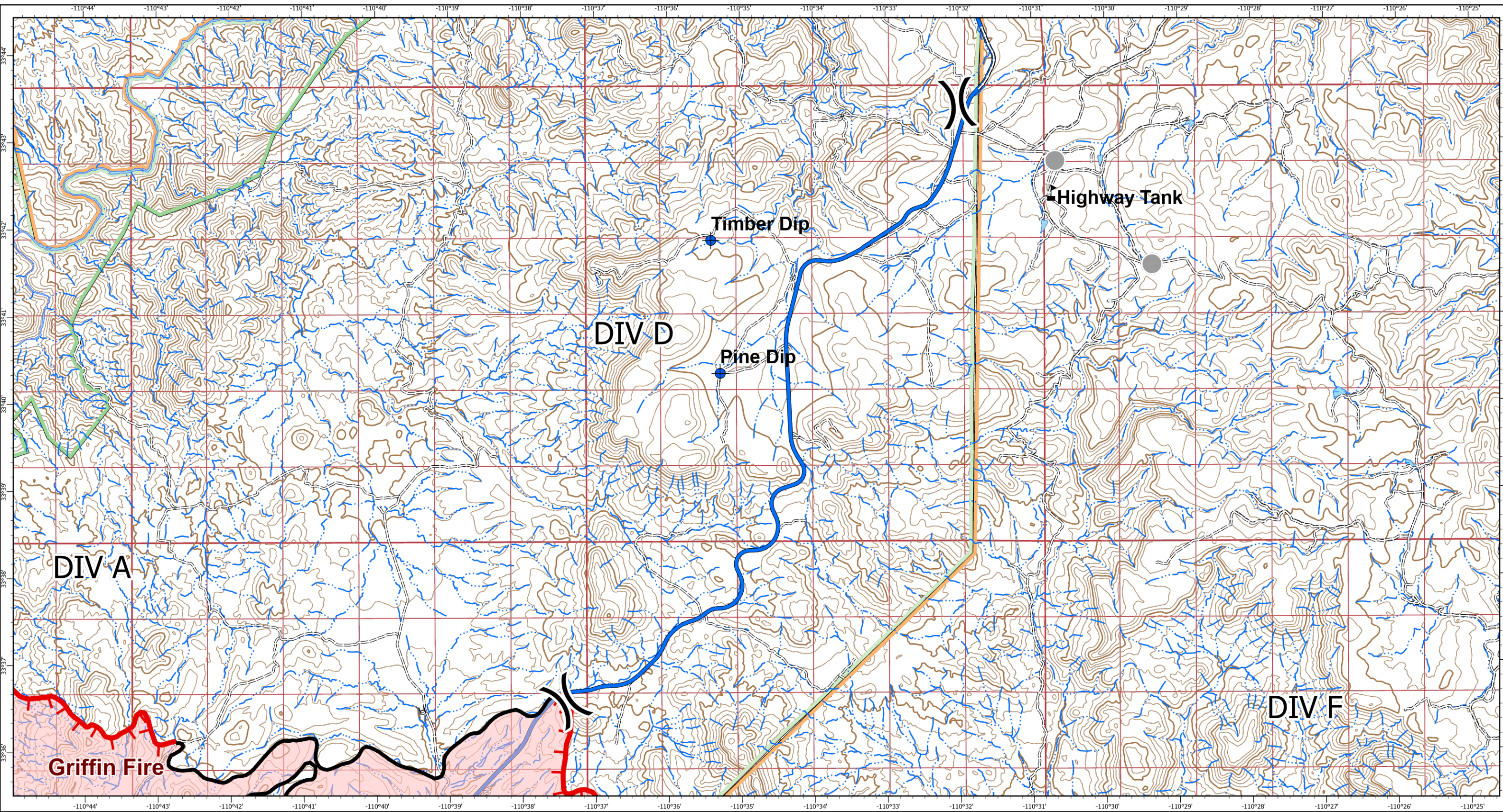


- |                  |                                    |                                 |                  |
|------------------|------------------------------------|---------------------------------|------------------|
| ● Drop Point     | ⌋ Branch Break                     | — Planned Fire Line             | ≡ Tunnel         |
| ● Helispot       | — Uncontrolled Fire Edge           | — Aerial Hazard                 | — Ferry          |
| ● Hot Spot       | — Contained Line                   | — Wildfire Daily Fire Perimeter | San Carlos Ranch |
| ● Repair Point   | ⊗ Completed Dozer Line             | — Controlled access             | Subdivision      |
| Ⓡ Repeater       | H Completed Hand Line              | — Highway or ramp               | — Tribal Roads   |
| Ⓢ Staging Area   | Proposed Burnout                   | — Local connector               |                  |
| ⚡ Value at Risk  | ⌋ Fire Break Planned or Incomplete | — Local or 4WD road             |                  |
| ⌋ Division Break |                                    |                                 |                  |

Salt: 20,809 acres  
 Griffin: 38,069 acres

NAD\_1983\_UTM\_Zone\_12N  
 Created: 8/24/2020 9:38 PM by frankwillia





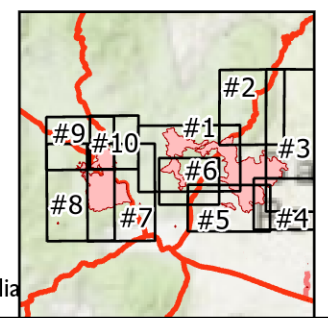
Salt and Griffin Fires  
 IAP Map  
 AZ-TNF-002511  
 Page #2  
 DIV D

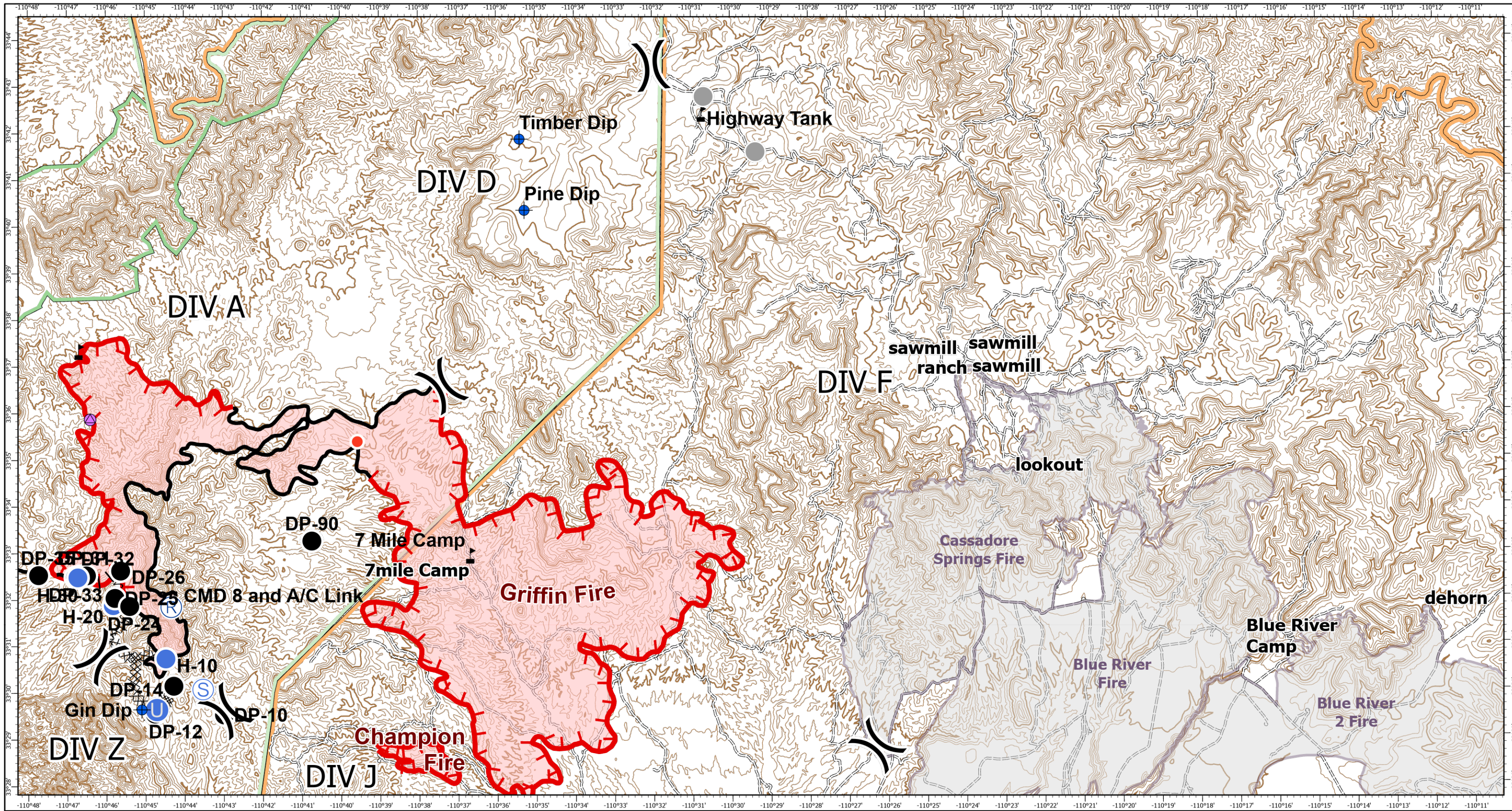


- ◆ Dip Site
- Hot Spot
- ⚡ Value at Risk
- Other
- )( Division Break
- ▬ Uncontrolled Fire Edge
- ▬ Contained Line
- H Completed Hand Line
- Wildfire Daily Fire Perimeter
- ▬ Controlled access
- ▬ Highway or ramp
- ▬ Local connector
- Local or 4WD road
- Tribal Roads
- Tunnel
- ▬ Ferry
- San Carlos Ranch
- Subdivision
- Tribal Roads

Salt: 20,809 acres  
 Griffin: 38,069 acres

NAD\_1983\_UTM\_Zone\_12N  
 Created: 8/24/2020 9:39 PM by frankwillia





Salt and Griffin Fires  
 IAP Map  
 AZ-TNF-002511  
 Page #3  
 DIV F

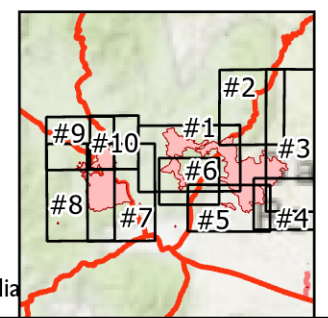
8/25/2020 Day  
 0 1.5 3 6 Miles

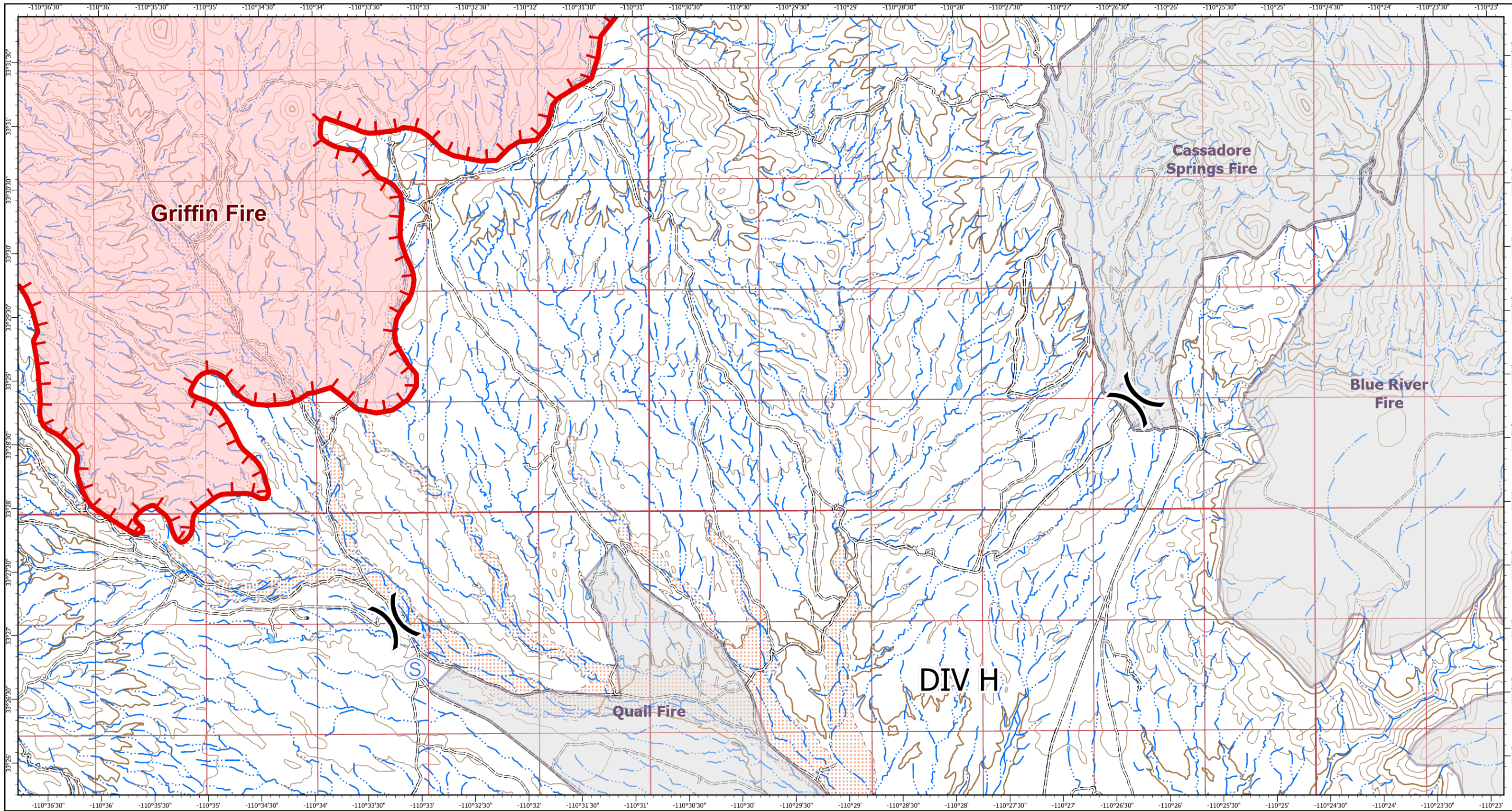


- |                           |                                    |                                 |
|---------------------------|------------------------------------|---------------------------------|
| • Dip Site                | • Other                            | — Planned Fire Line             |
| • Drop Point              | ) ( Division Break                 | — Wildfire Daily Fire Perimeter |
| • Unimproved Landing Area | — Uncontrolled Fire Edge           | — Historic 2020 Fires           |
| • Helispot                | — Contained Line                   | San Carlos                      |
| • Hot Spot                | XX Completed Dozer Line            | Ranch                           |
| • Repair Point            | H Completed Hand Line              | Subdivision                     |
| • Repeater                | Proposed Burnout                   | — Tribal Roads                  |
| • Staging Area            | M Fire Break Planned or Incomplete |                                 |
| • Value at Risk           |                                    |                                 |

Salt: 20,809 acres  
 Griffin: 38,069 acres












NAD\_1983\_UTM\_Zone\_12N  
 Created: 8/24/2020 9:40 PM by frankwillia





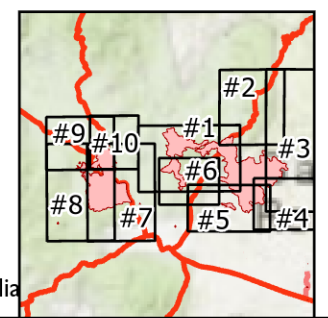
Salt and Griffin Fires  
 IAP Map  
 AZ-TNF-002511  
 Page #4  
 DIV H

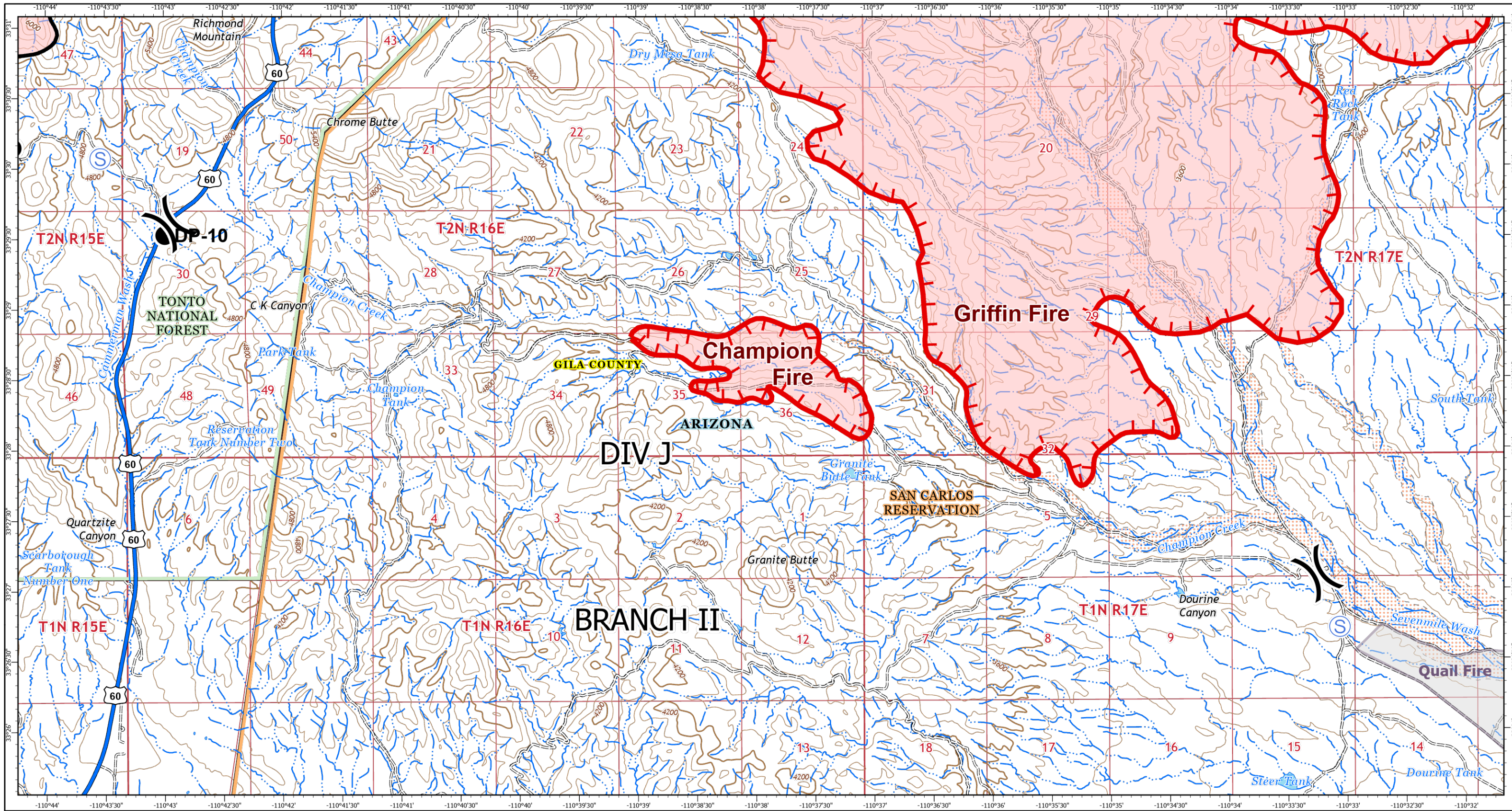


-  Staging Area
-  Division Break
-  Uncontrolled Fire Edge
-  Wildfire Daily Fire Perimeter
-  Controlled access
-  Highway or ramp
-  Local connector
-  Local or 4WD road
-  Tunnel
-  Ferry
-  Historic 2020 Fires
- San Carlos**
- Ranch
- Subdivision
- ==== Tribal Roads

Salt: 20,809 acres  
 Griffin: 38,069 acres

NAD\_1983\_UTM\_Zone\_12N  
 Created: 8/24/2020 9:41 PM by frankwillia





Salt and Griffin Fires  
 IAP Map  
 AZ-TNF-002511  
 Page #5  
 DIV J

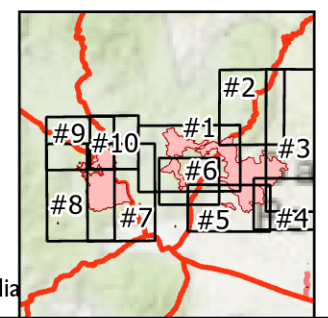
8/25/2020 Day  
 0 0.5 1 2 Miles



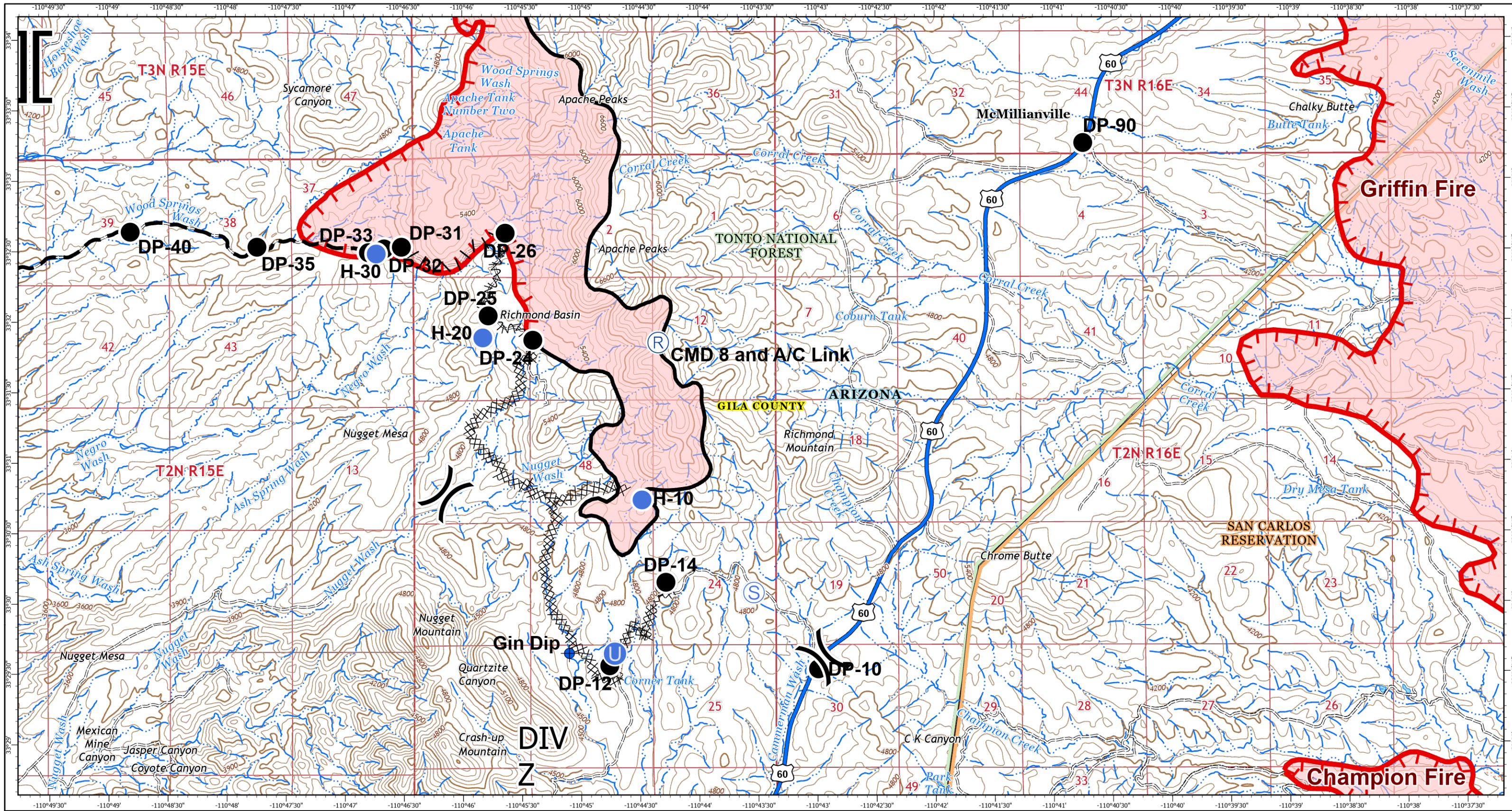
- Drop Point
- Ⓢ Staging Area
- ) Division Break
- ┌ Uncontrolled Fire Edge
- ▬ Contained Line
- ⊗ Completed Dozer Line
- ▭ Wildfire Daily Fire Perimeter
- ▬ Controlled access
- ▬ Highway or ramp
- ▬ Local connector
- ▬ Local or 4WD road
- ≡ Tunnel
- ▬ Ferry
- ▭ Historic 2020 Fires
- San Carlos Ranch
- Subdivision
- ▬ Tribal Roads

Salt: 20,809 acres  
 Griffin: 38,069 acres

NAD\_1983\_UTM\_Zone\_12N  
 Created: 8/24/2020 9:41 PM by frankwillia



Southwest Area  
  
 Incident Management Team 5



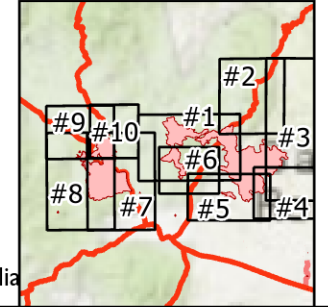
Salt and Griffin Fires  
 IAP Map  
 AZ-TNF-002511  
 Page #6  
 DIV Z

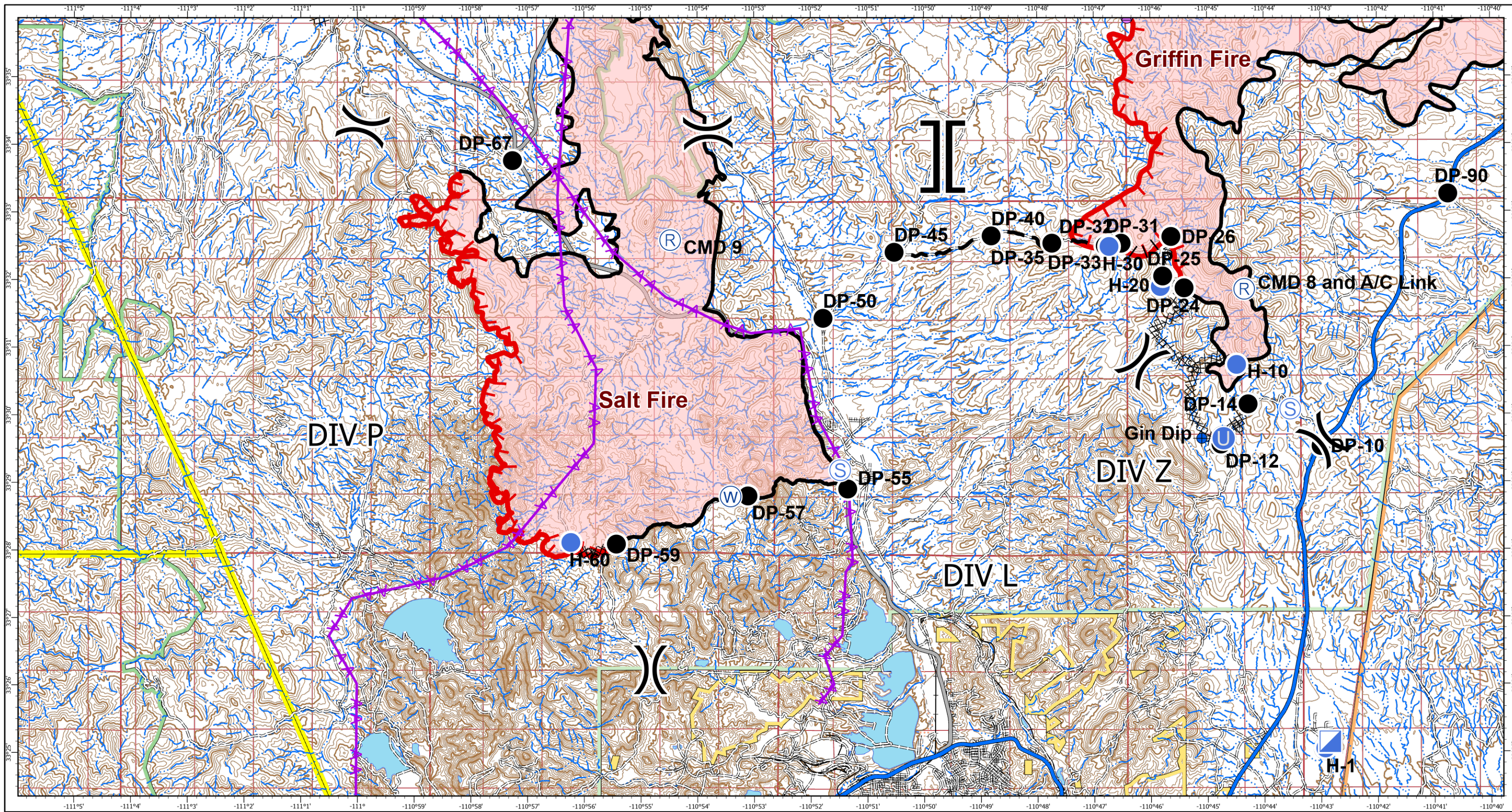


- Dip Site
- Drop Point
- Unimproved Landing Area
- Helispot
- Repeater
- Staging Area
- ⌋ Division Break
- ⌋ Branch Break
- Contained Line
- ⊗ Completed Dozer Line
- | Proposed Burnout
- ^ Fire Break Planned or Incomplete
- Planned Fire Line
- Wildfire Daily Fire Perimeter
- Controlled access
- Highway or ramp
- Local connector
- == Local or 4WD road
- ≠ Tunnel
- Ferry
- San Carlos Ranch
- Subdivision
- == Tribal Roads

Salt: 20,809 acres  
 Griffin: 38,069 acres

NAD\_1983\_UTM\_Zone\_12N  
 Created: 8/24/2020 9:42 PM by frankwillia





Salt and Griffin Fires  
 IAP Map  
 AZ-TNF-002511  
 Page #7  
 DIV L

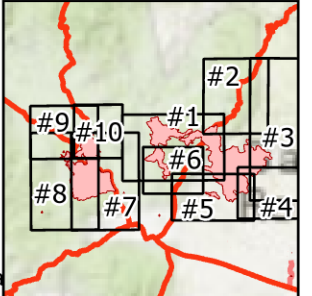


- |                           |                          |                                    |                      |
|---------------------------|--------------------------|------------------------------------|----------------------|
| ◆ Dip Site                | ⊙ Staging Area           | ⚠ Fire Break Planned or Incomplete | == Local or 4WD road |
| ● Drop Point              | ⊙ Water Source           | — Planned Fire Line                | ≡ Tunnel             |
| ⊙ Unimproved Landing Area | ) Division Break         | ✶ Aerial Hazard                    | — Ferry              |
| ⊙ Helispot                | ] Branch Break           | ■ Wildfire Daily Fire Perimeter    |                      |
| ● Hot Spot                |                          | — Controlled access                |                      |
| ⊙ Incident Command Post   | — Uncontrolled Fire Edge | — Highway or ramp                  |                      |
| ⊙ Repair Point            | — Contained Line         | — Local connector                  |                      |
| ⊙ Repeater                | ⊗ Completed Dozer Line   |                                    |                      |
|                           | Proposed Burnout         |                                    |                      |

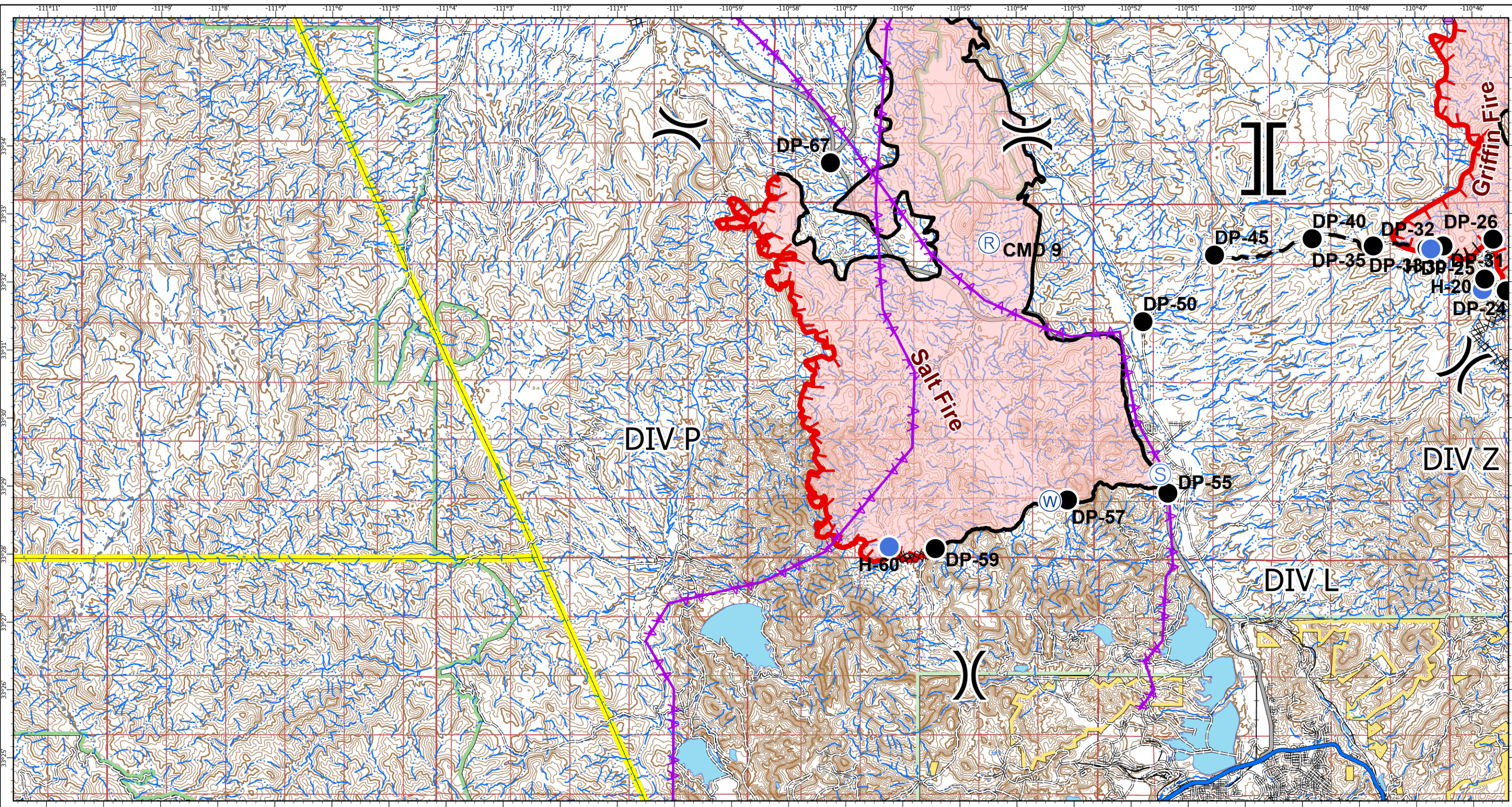
San Carlos Ranch Subdivision Tribal Roads

Salt: 20,809 acres  
 Griffin: 38,069 acres

NAD\_1983\_UTM\_Zone\_12N  
 Created: 8/24/2020 9:43 PM by frankwillia







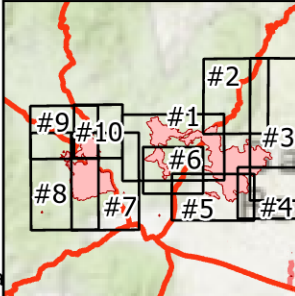
Salt and Griffin Fires  
 IAP Map  
 AZ-TNF-002511  
 Page #8  
 DIV P

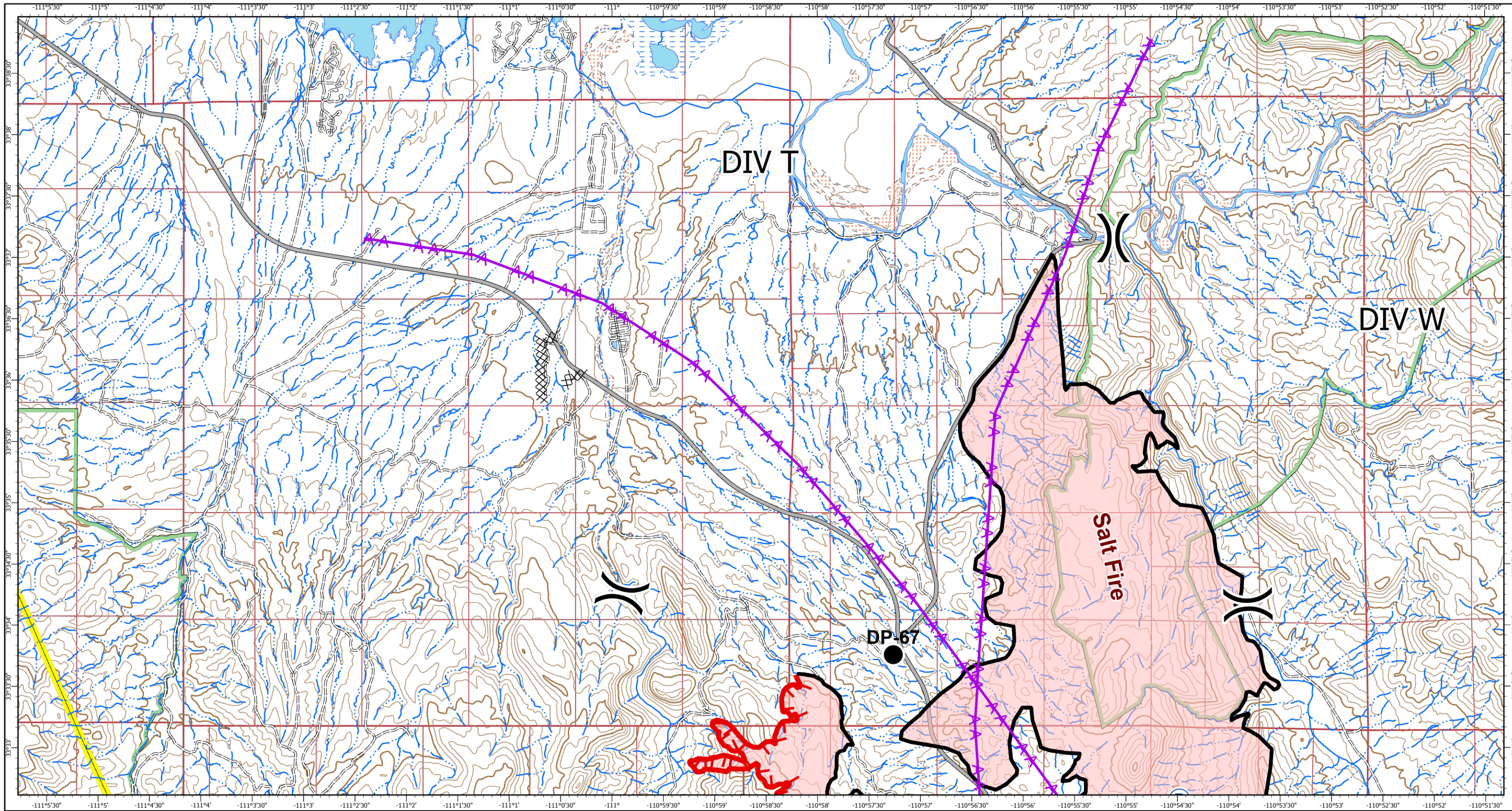


- |                |                                    |                                 |                  |
|----------------|------------------------------------|---------------------------------|------------------|
| ◆ Dip Site     | ) ( Division Break                 | — Planned Fire Line             | ≡≡≡ Tunnel       |
| ● Drop Point   | ] [ Branch Break                   | ✱ Aerial Hazard                 | — Ferry          |
| ● Helispot     | ┌┐ Uncontrolled Fire Edge          | ■ Wildfire Daily Fire Perimeter | San Carlos Ranch |
| ● Repair Point | — Contained Line                   | — Controlled access             | Subdivision      |
| Ⓡ Repeater     | ⊗ Completed Dozer Line             | — Highway or ramp               | ≡≡≡ Tribal Roads |
| Ⓢ Staging Area | Proposed Burnout                   | — Local connector               |                  |
| Ⓜ Water Source | ⌒ Fire Break Planned or Incomplete | — Local or 4WD road             |                  |

Salt: 20,809 acres  
 Griffin: 38,069 acres

NAD\_1983\_UTM\_Zone\_12N  
 Created: 8/24/2020 9:44 PM by frankwillia





Salt and Griffin Fires  
 IAP Map  
 AZ-TNF-002511  
 Page #9  
 DIV T

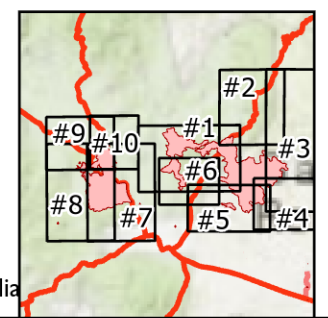
8/25/2020 Day  
 0 0.5 1 2 Miles

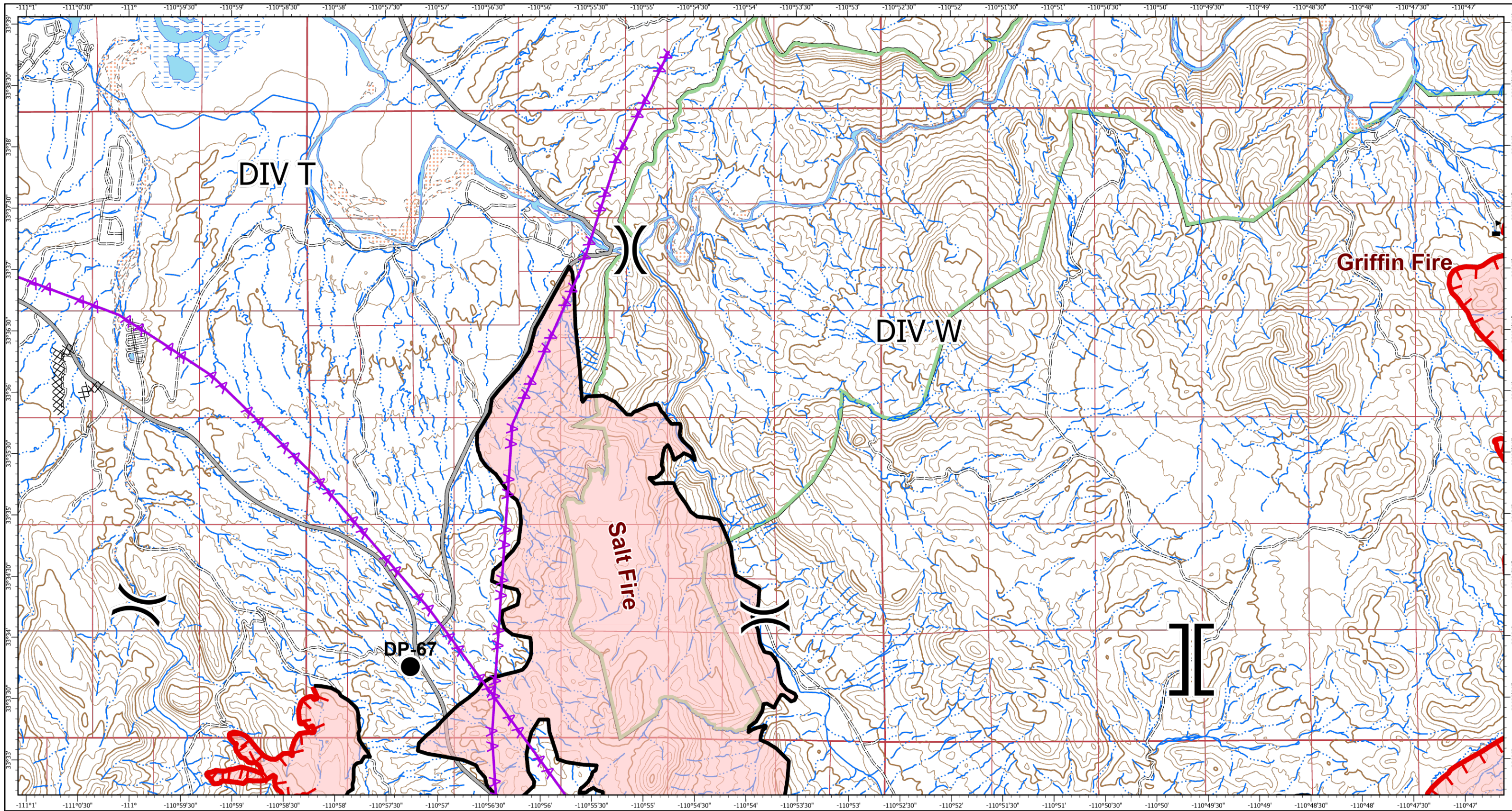


- Drop Point
- Ⓡ Repeater
- ) ( Division Break
- Uncontrolled Fire Edge
- Contained Line
- ⊗⊗ Completed Dozer Line
- ▲ Aerial Hazard
- Wildfire Daily Fire Perimeter
- Controlled access
- Highway or ramp
- Local connector
- Local or 4WD road
- ≡≡≡ Tunnel
- Ferry
- San Carlos Ranch
- Subdivision
- Tribal Roads

Salt: 20,809 acres  
 Griffin: 38,069 acres

NAD\_1983\_UTM\_Zone\_12N  
 Created: 8/24/2020 9:45 PM by frankwillia





Salt and Griffin Fires  
 IAP Map  
 AZ-TNF-002511  
 Page  
 DIV W

8/25/2020 Day  
 0 0.5 1 2 Miles



- Drop Point
- ⊗ Completed Dozer Line
- ⊗ Repair Point
- ⊗ Planned Fire Line
- ⊗ Repeater
- ⊗ Aerial Hazard
- ⊗ Value at Risk
- ⊗ Wildfire Daily Fire Perimeter
- ⊗ Division Break
- ⊗ Controlled access
- ⊗ Branch Break
- ⊗ Highway or ramp
- ⊗ Uncontrolled Fire Edge
- ⊗ Contained Line
- ⊗ Local or 4WD road
- ⊗ Tunnel
- ⊗ Ferry
- San Carlos Ranch Subdivision Tribal Roads

Salt: 20,809 acres  
 Griffin: 38,069 acres

NAD\_1983\_UTM\_Zone\_12N  
 Created: 8/24/2020 9:45 PM by frankwillia

