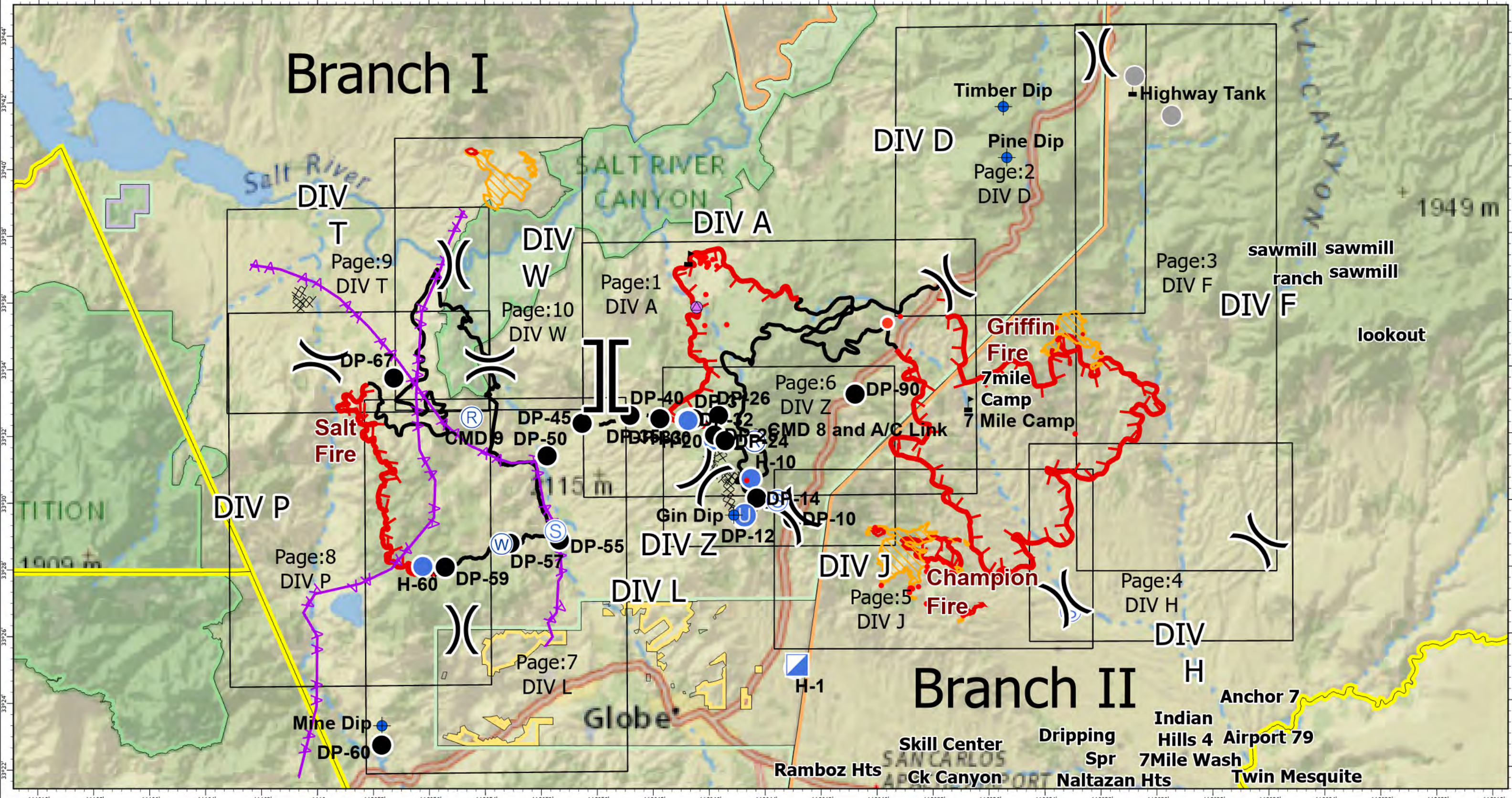


Branch I

Branch II



Salt and Griffin Fires
IAP Map
AZ-TNF-002511
Index Page

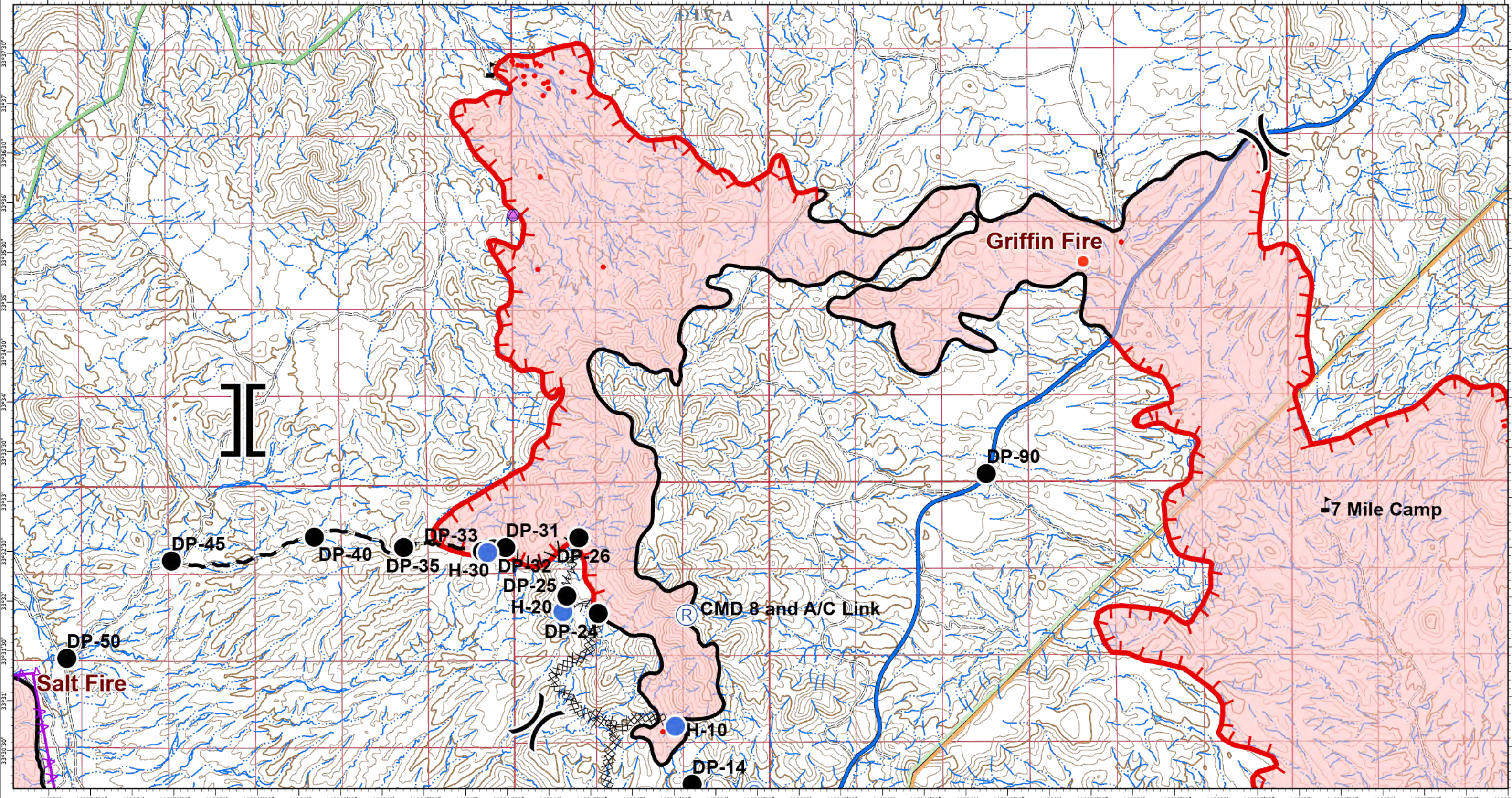


- | | | | | |
|---------------------------|------------------|--------------------------|------------------------------------|-------------------------------|
| ◆ Dip Site | Ⓜ Repeater | ⌋ Branch Break | ⌒ Fire Break Planned or Incomplete | ● 20200825_Champion_Isolated |
| ● Drop Point | Ⓢ Staging Area | ▬ Uncontrolled Fire Edge | ▬ Planned Fire Line | ▨ 20200825_Champion_Intense |
| ● Unimproved Landing Area | Ⓜ Water Source | ▬ Contained Line | ▬ Aerial Hazard | ▨ 20200825_Griffin_Intense |
| ● Helispot | Ⓜ Value at Risk | ⊗ Completed Dozer Line | ▭ DIV_Grid_Index | ▨ 20200825_Griffin_Scattered |
| ● Hot Spot | ● Other | H Completed Hand Line | IR | ▨ 20200825_Champion_Scattered |
| ▭ Incident Command Post |) Division Break | Proposed Burnout | ● 20200825_Griffin_Isolated | |
| ● Repair Point | | | | |

Salt: 20,809 acres
Griffin: 42,040 acres



NAD_1983_UTM_Zone_12N
Created: 8/25/2020 10:55 AM by rubenrodriguez

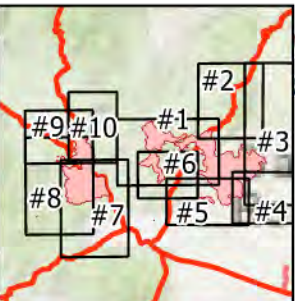


Salt and Griffin Fires
 IAP Map
 AZ-TNF-002511
 Page #1
 DIV A
 8/25/2020 Day

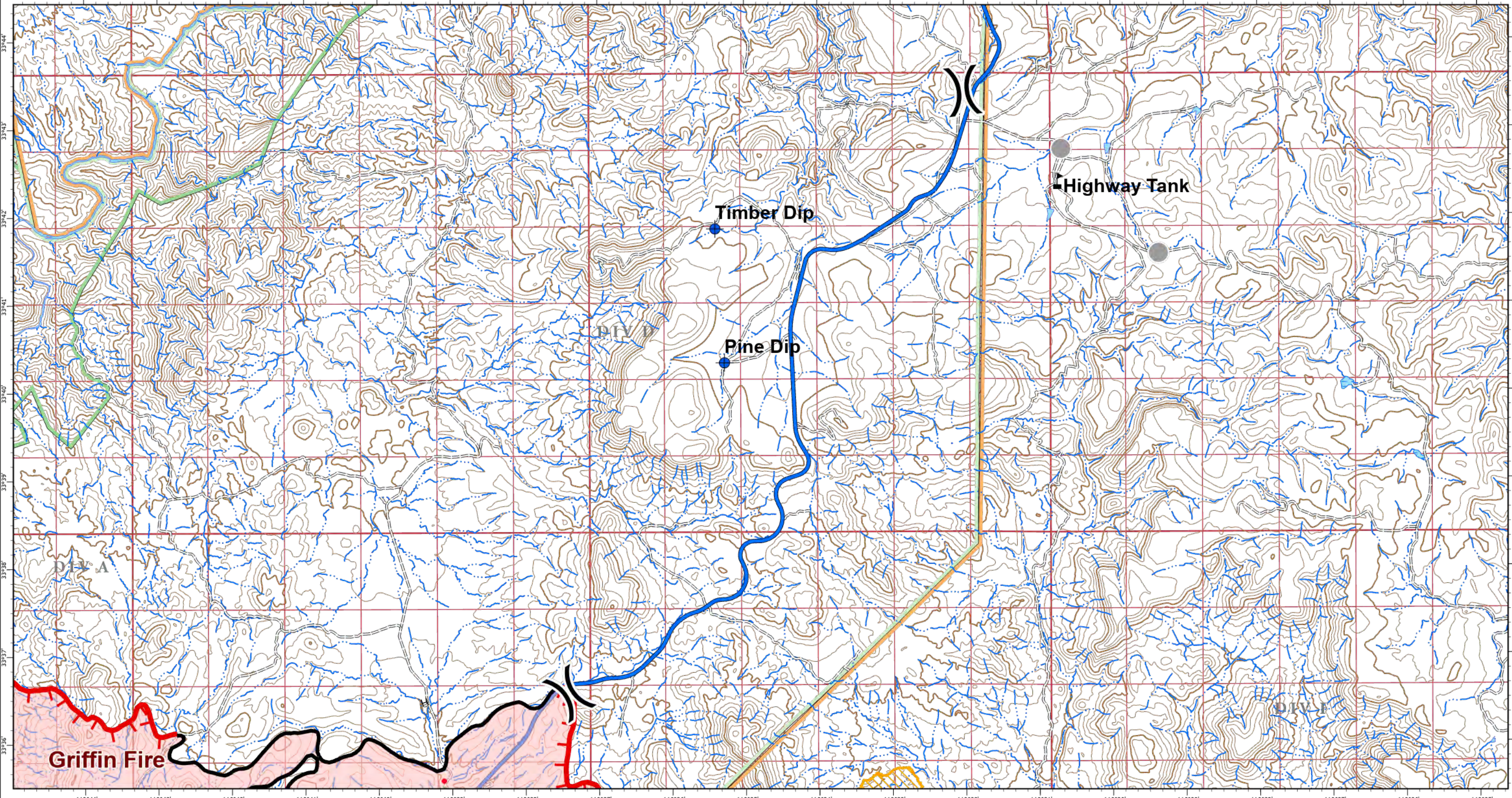


- | | | | |
|-----------------|--------------------------|------------------------------------|---------------------|
| ● Drop Point | ⎓ Division Break | ⌒ Fire Break Planned or Incomplete | ▬ Highway or ramp |
| ● Helispot | ⎓ Branch Break | ▬ Planned Fire Line | ▬ Local connector |
| ● Hot Spot | ▬ Uncontrolled Fire Edge | ▬ Aerial Hazard | ▬ Local or 4WD road |
| ● Repair Point | ▬ Contained Line | ▬ Wildfire Daily Fire Perimeter | ▬ Tunnel |
| Ⓡ Repeater | ⊗ Completed Dozer Line | ▬ Controlled access | ▬ Ferry |
| Ⓢ Staging Area | H Completed Hand Line | | |
| ⚡ Value at Risk | Proposed Burnout | | |
- Transportation
- IR
- 20200825_Griffin_Isolated

Salt: 20,809 acres
 Griffin: 42,040 acres
 NAD_1983_UTM_Zone_12N



Created: 8/25/2020 10:57 AM by rubenrodriguez



Salt and Griffin Fires
 IAP Map
 AZ-TNF-002511
 Page #2
 DIV D



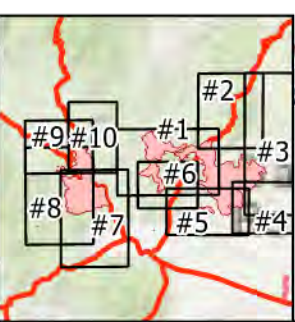
- ◆ Dip Site
- Hot Spot
- ▲ Value at Risk
- Other
-) Division Break

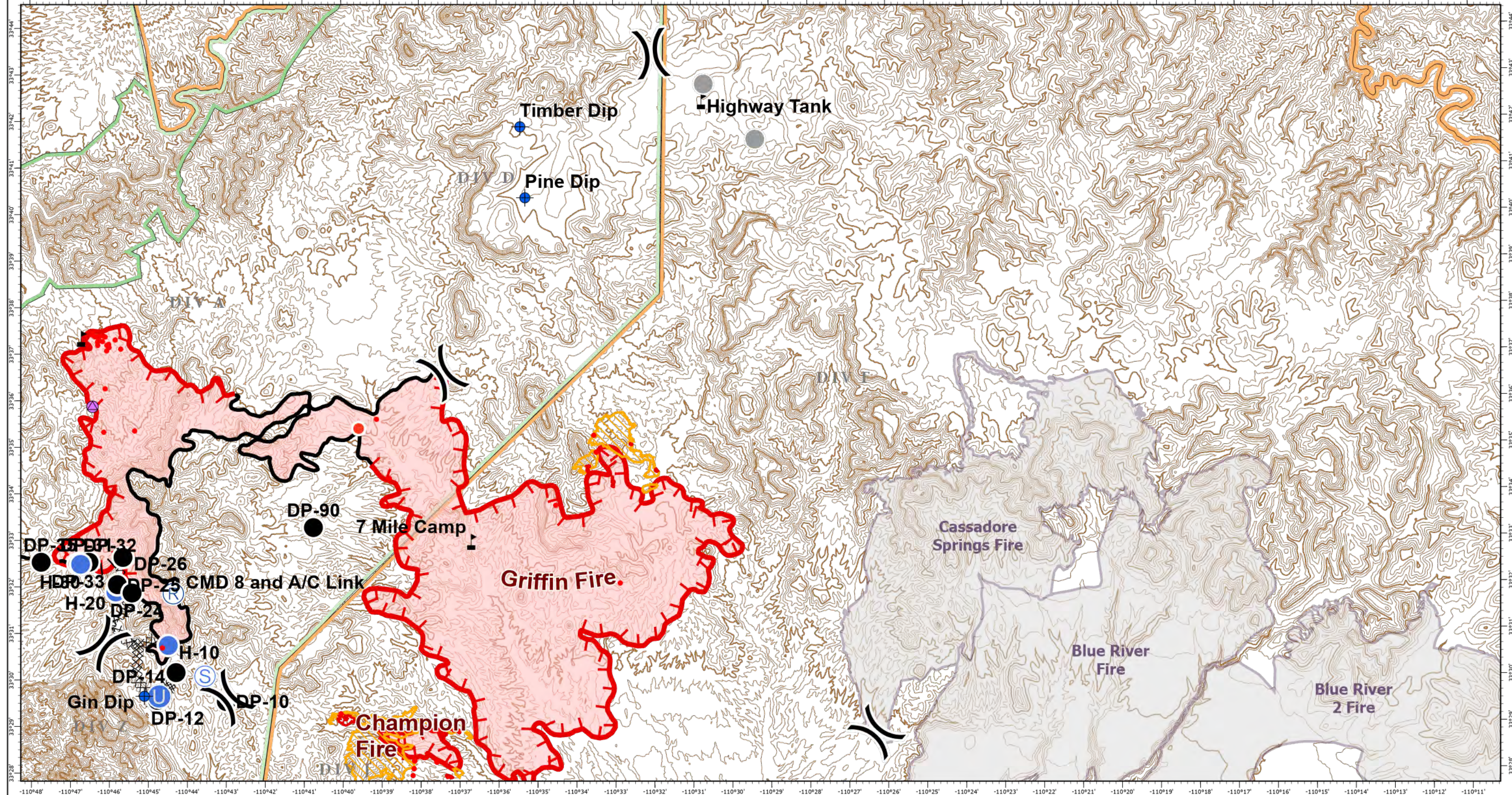
- ▬ Uncontrolled Fire Edge
- ▬ Contained Line
- H · Completed Hand Line
- ▬ Wildfire Daily Fire Perimeter

- Transportation**
- ▬ Controlled access
 - ▬ Highway or ramp
 - ▬ Local connector
 - ▬ Local or 4WD road

- ▬ Tunnel
- ▬ Ferry
- IR**
- 20200825_Griffin_Isolated
- ▨ 20200825_Griffin_Scattered

Salt: 20,809 acres
 Griffin: 42,040 acres
 NAD_1983_UTM_Zone_12N



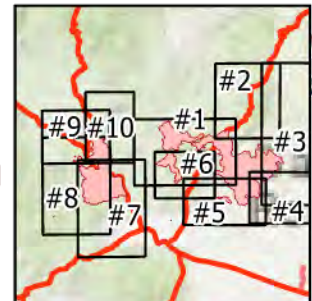


Salt and Griffin Fires
 IAP Map
 AZ-TNF-002511
Page #3
 DIV F
 8/25/2020 Day
 0 1.5 3 6 Miles



- | | | | |
|---|---|---|---|
| <ul style="list-style-type: none"> ● Dip Site ● Drop Point ● Unimproved Landing Area ● Helispot ● Hot Spot ● Repair Point ● Repeater ● Staging Area | <ul style="list-style-type: none"> ⚠ Value at Risk ○ Other ⎓ Division Break ▬ Uncontrolled Fire Edge ▬ Contained Line ⊗ Completed Dozer Line H Completed Hand Line | <ul style="list-style-type: none"> Proposed Burnout ⎓ Fire Break Planned or Incomplete ▬ Planned Fire Line ▭ Wildfire Daily Fire Perimeter ▭ Historic 2020 Fires IR | <ul style="list-style-type: none"> ● 20200825_Champion_Isolated ▨ 20200825_Champion_Intense ▨ 20200825_Griffin_Intense ▨ 20200825_Champion_Scattered ▨ 20200825_Griffin_Scattered ● 20200825_Griffin_Isolated |
|---|---|---|---|

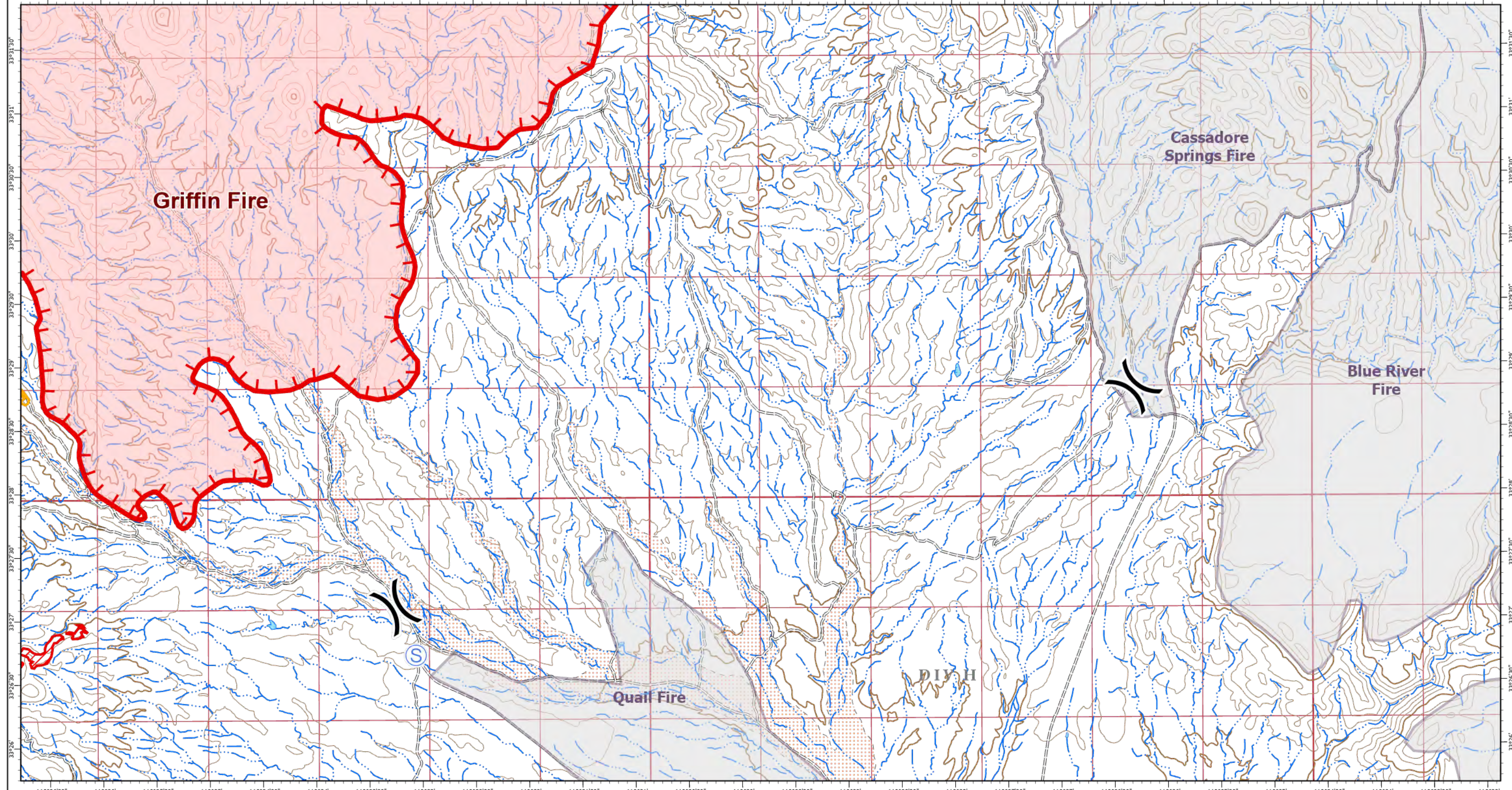
Salt: 20,809 acres
 Griffin: 42,040 acres
 NAD_1983_UTM_Zone_12N



Southwest Area

Incident Management Team 5

Created: 8/25/2020 10:57 AM by rubenrodriguez



Salt and Griffin Fires
 IAP Map
 AZ-TNF-002511
 Page #4
 DIV H

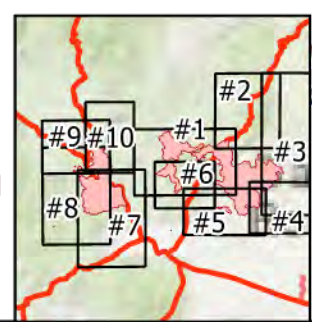
8/25/2020 Day
 0 0.5 1 2 Miles



- Staging Area
- Division Break
- Uncontrolled Fire Edge
- Wildfire Daily Fire Perimeter
- Transportation**
- Controlled access
- Highway or ramp
- Local connector
- Local or 4WD road
- Tunnel
- Ferry
- Historic 2020 Fires

- IR**
- 20200825_Champion_Isolated
- 20200825_Champion_Intense
- 20200825_Champion_Scattered

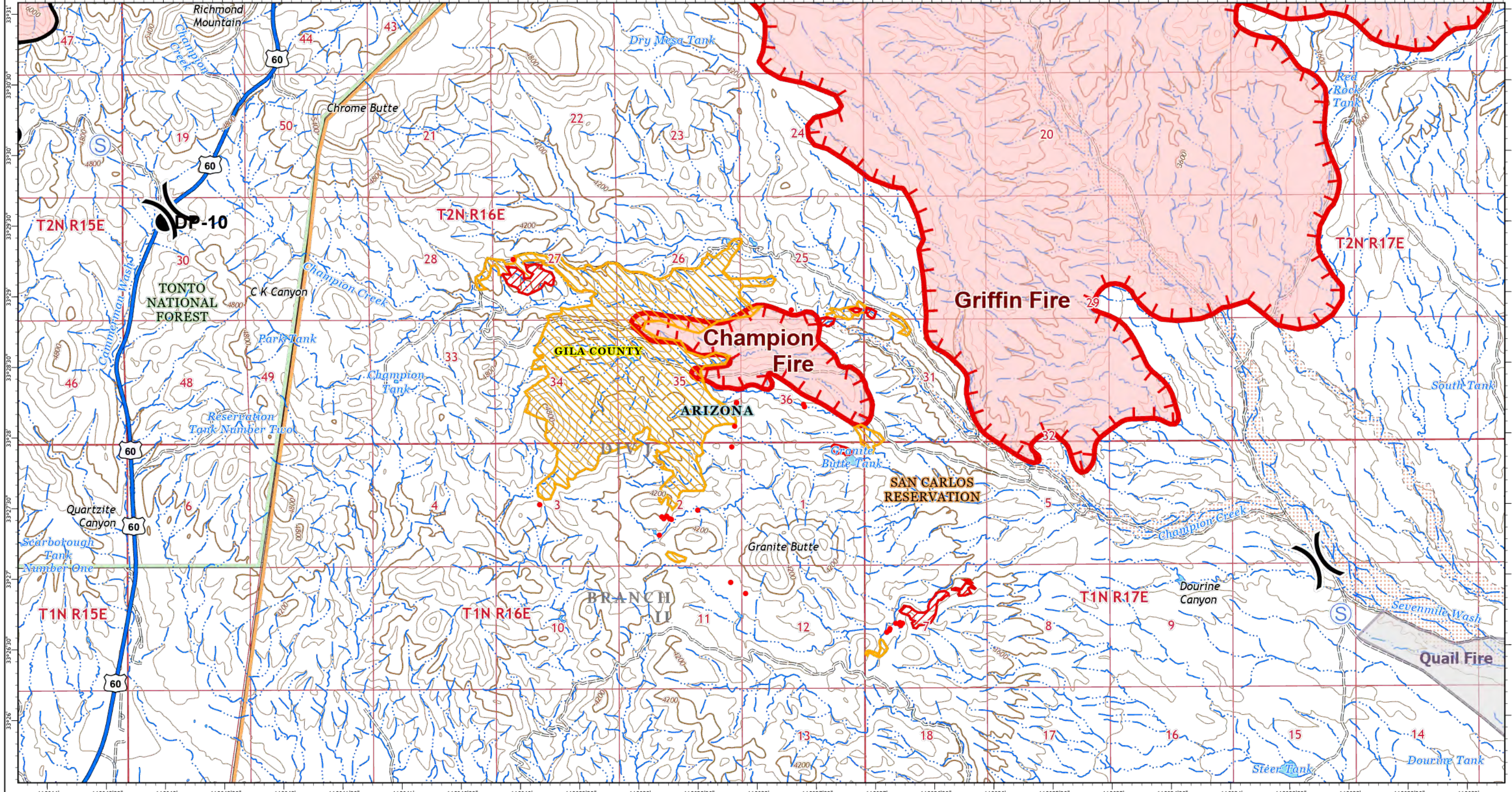
Salt: 20,809 acres
 Griffin: 42,040 acres
 NAD_1983_UTM_Zone_12N



Southwest Area

 Incident Management Team 5

Created: 8/25/2020 10:57 AM by rubenrodriguez

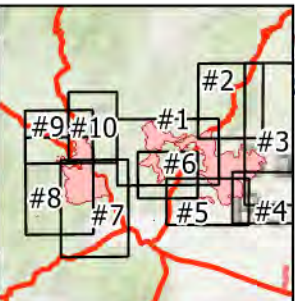


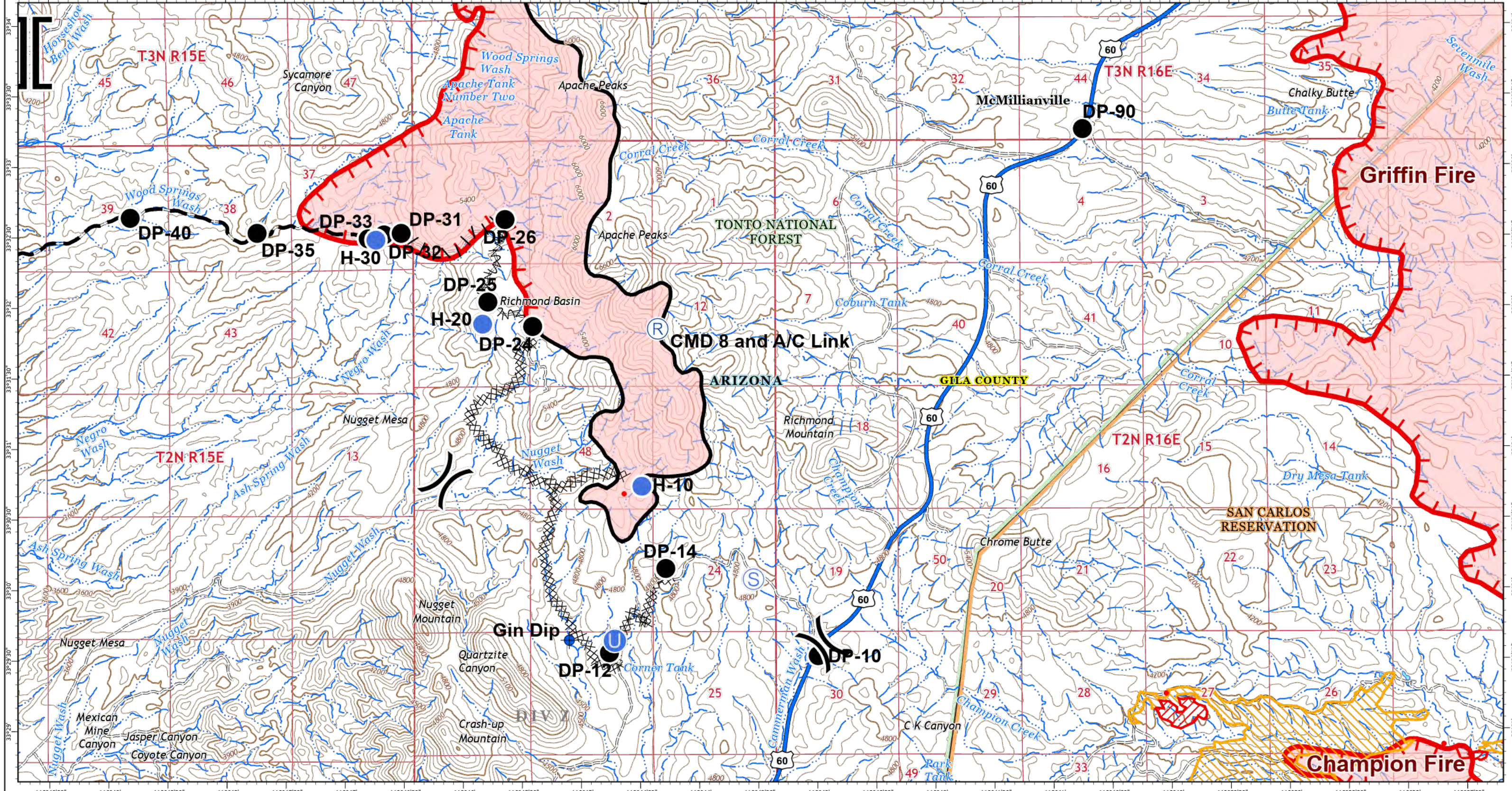
Salt and Griffin Fires
 IAP Map
 AZ-TNF-002511
 Page #5
 DIV J



- Drop Point
- ⊙ Staging Area
- ⌘ Division Break
- Uncontrolled Fire Edge
- Contained Line
- ⊗⊗ Completed Dozer Line
- Wildfire Daily Fire Perimeter
- Transportation**
- Controlled access
- Highway or ramp
- Local connector
- Local or 4WD road
- Tunnel
- Ferry
- Historic 2020 Fires
- IR
- 20200825_Champion_Isolated
- ▨ 20200825_Champion_Intense
- ▨ 20200825_Champion_Scattered

Salt: 20,809 acres
 Griffin: 42,040 acres
 NAD_1983_UTM_Zone_12N





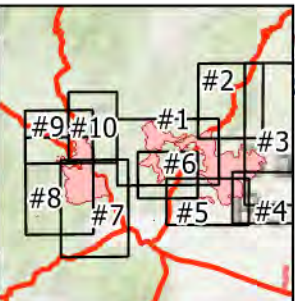
Salt and Griffin Fires
 IAP Map
 AZ-TNF-002511
 Page #6
 DIV Z

8/25/2020 Day
 0 0.5 1 2 Miles

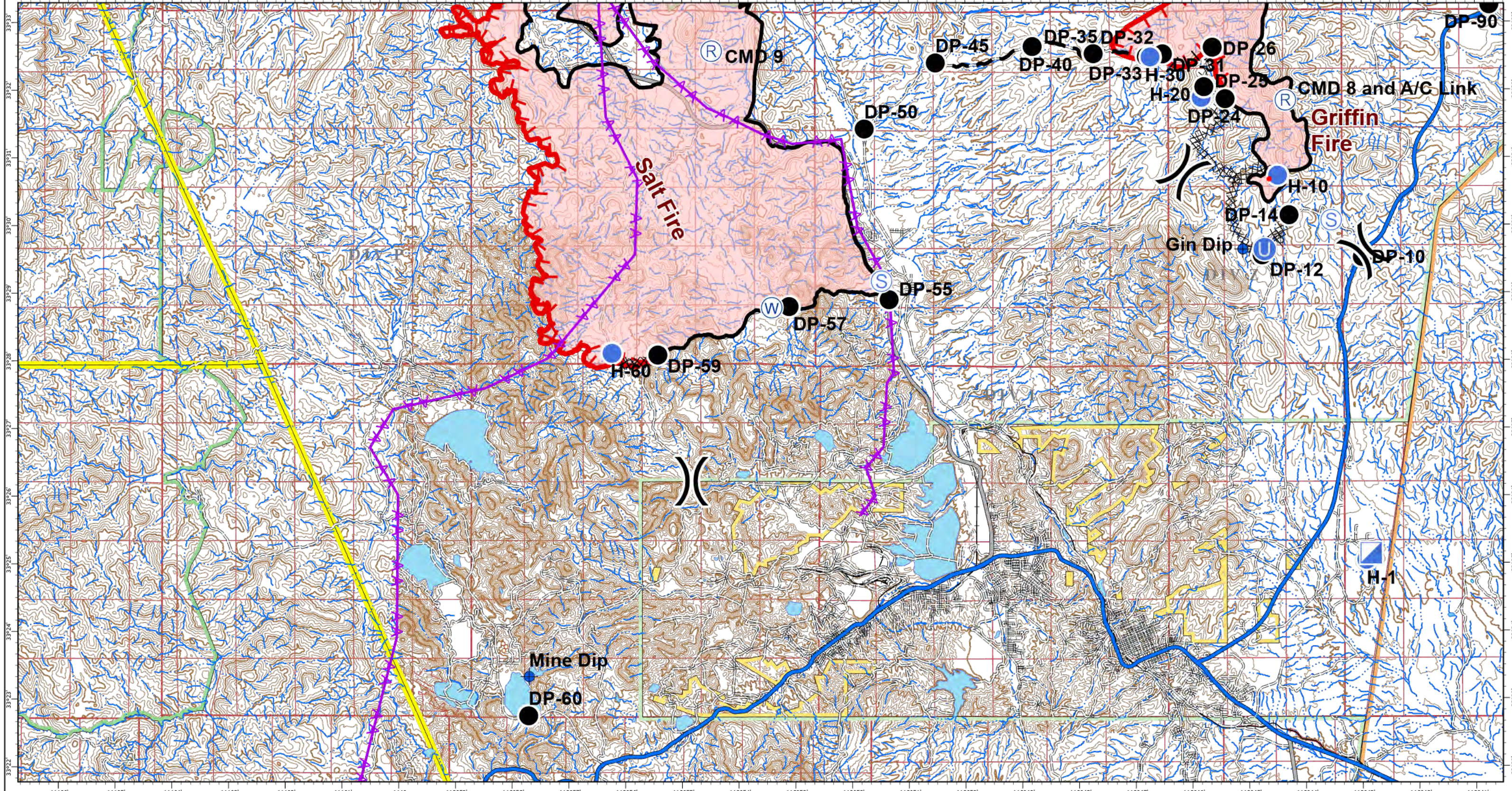


- ◆ Dip Site
- Drop Point
- Unimproved Landing Area
- Helispot
- Ⓡ Repeater
- Ⓢ Staging Area
- Ⓝ Division Break
- ⌋ Branch Break
- Uncontrolled Fire Edge
- Contained Line
- ⊗ Completed Dozer Line
- | Proposed Burnout
- ⌒ Fire Break Planned or Incomplete
- Planned Fire Line
- Wildfire Daily Fire Perimeter
- Transportation: Controlled access
- Highway or ramp
- Local connector
- Local or 4WD road
- ≡ Tunnel
- IR: 20200825_Griffin_Isolated
- IR: 20200825_Champion_Isolated
- ▨ IR: 20200825_Champion_Intense
- ▨ IR: 20200825_Champion_Scattered
- Ferry

Salt: 20,809 acres
 Griffin: 42,040 acres
 NAD_1983_UTM_Zone_12N



Created: 8/25/2020 10:58 AM by rubenrodriguez

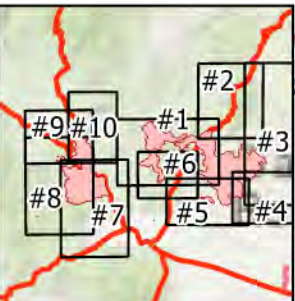


Salt and Griffin Fires
 IAP Map
 AZ-TNF-002511
 Page #7
 DIV L

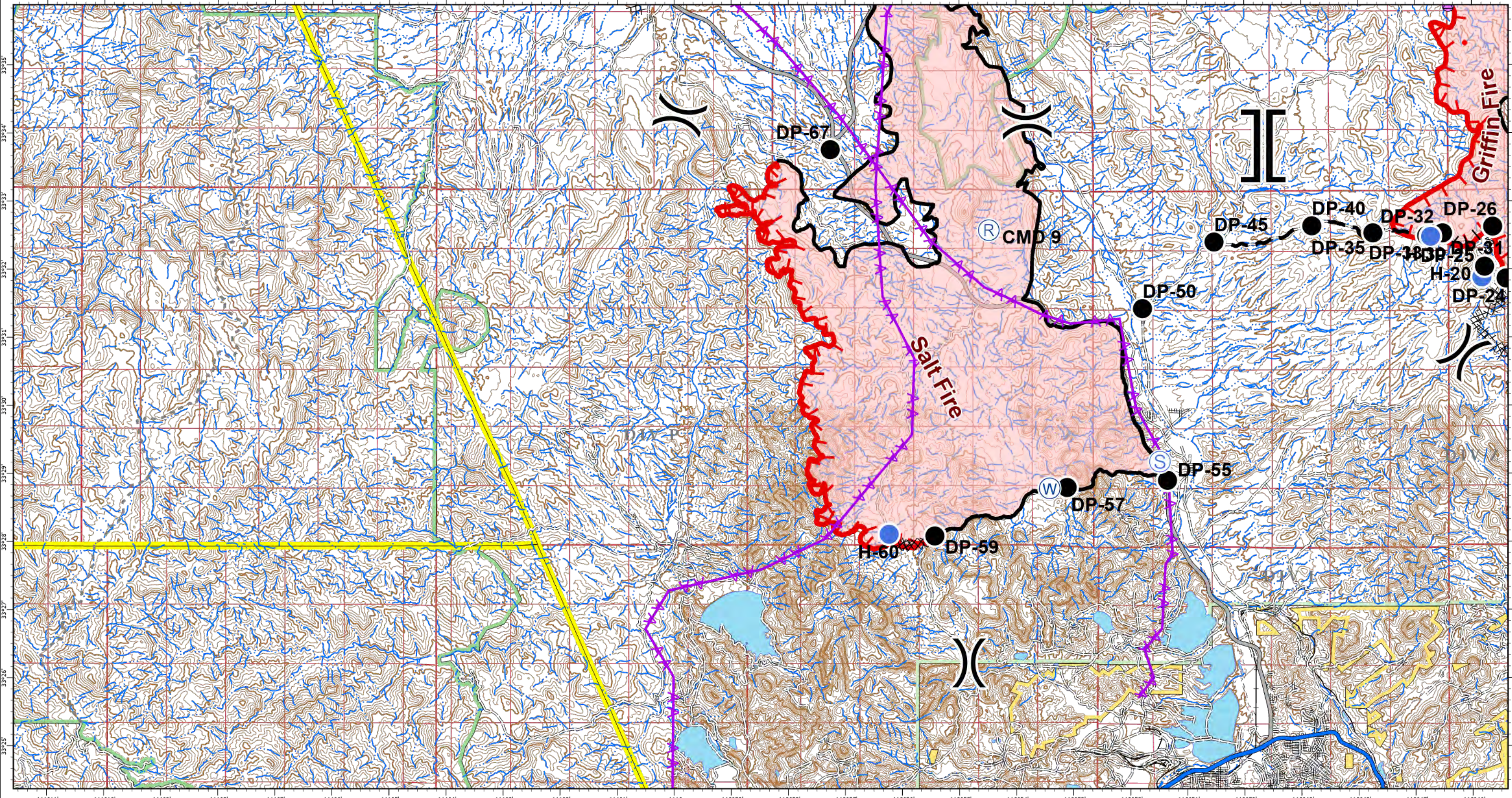


- ◆ Dip Site
- Drop Point
- Unimproved Landing Area
- Helispot
- ▣ Incident Command Post
- Ⓜ Repeater
- Ⓢ Staging Area
- Ⓜ Water Source
- ⌋ Division Break
- Uncontrolled Fire Edge
- Contained Line
- ⊗ Completed Dozer Line
- Proposed Burnout
- Ⓜ Fire Break Planned or Incomplete
- Planned Fire Line
- Aerial Hazard
- Wildfire Daily Fire Perimeter
- Controlled access
- Highway or ramp
- Local connector
- Local or 4WD road
- Tunnel
- Ferry
- IR
- 20200825_Griffin_Isolated

Salt: 20,809 acres
 Griffin: 42,040 acres
 NAD_1983_UTM_Zone_12N



Created: 8/25/2020 10:58 AM by rubenrodriguez

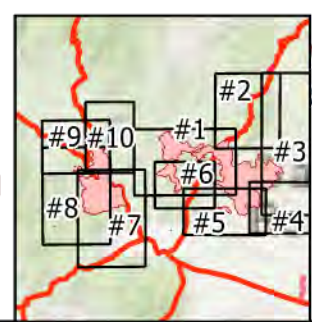


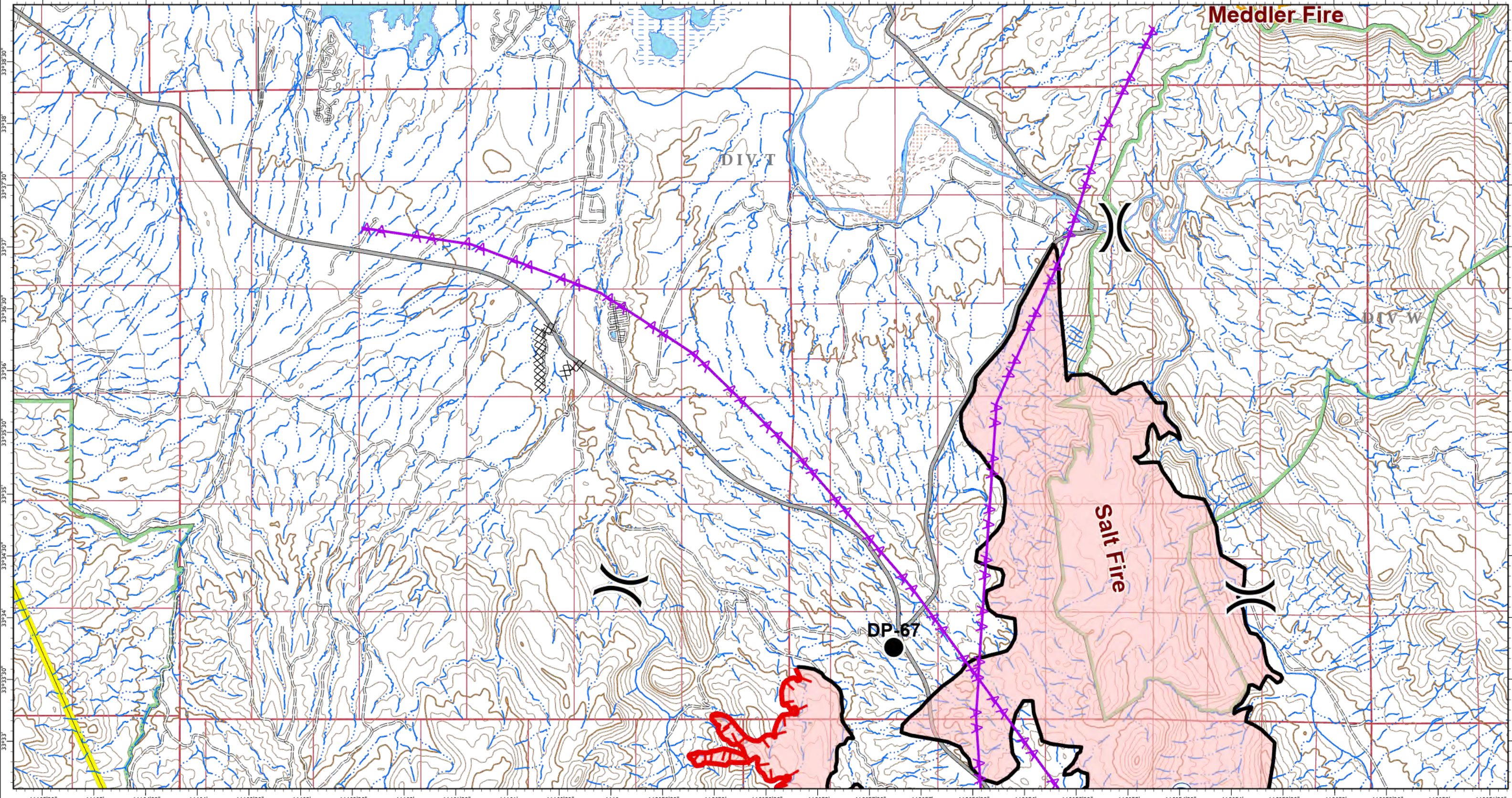
Salt and Griffin Fires
 IAP Map
 AZ-TNF-002511
 Page #8
 DIV P



- | | | | |
|----------------|------------------------------------|---------------------------------|-----------------------------|
| ◆ Dip Site |) (Division Break | — Planned Fire Line | — Local connector |
| ● Drop Point |] [Branch Break | ✱ Aerial Hazard | == Local or 4WD road |
| ○ Helispot | — Uncontrolled Fire Edge | ■ Wildfire Daily Fire Perimeter | — Tunnel |
| ● Repair Point | — Contained Line | Transportation | — Ferry |
| Ⓡ Repeater | ✕ Completed Dozer Line | — Controlled access | IR |
| Ⓢ Staging Area | Proposed Burnout | — Highway or ramp | ● 20200825_Griffin_Isolated |
| Ⓜ Water Source | ^ Fire Break Planned or Incomplete | | |

Salt: 20,809 acres
 Griffin: 42,040 acres
 NAD_1983_UTM_Zone_12N





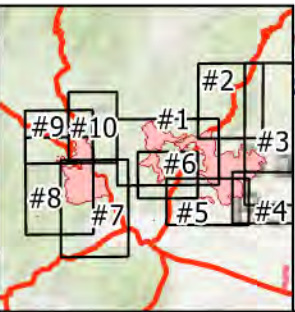
Salt and Griffin Fires
 IAP Map
 AZ-TNF-002511
 Page #9
 DIV T



- Drop Point
- Ⓜ Repeater
- ⌋ Division Break
- Uncontrolled Fire Edge
- Contained Line
- ⊗⊗ Completed Dozer Line
- Aerial Hazard
- Wildfire Daily Fire Perimeter

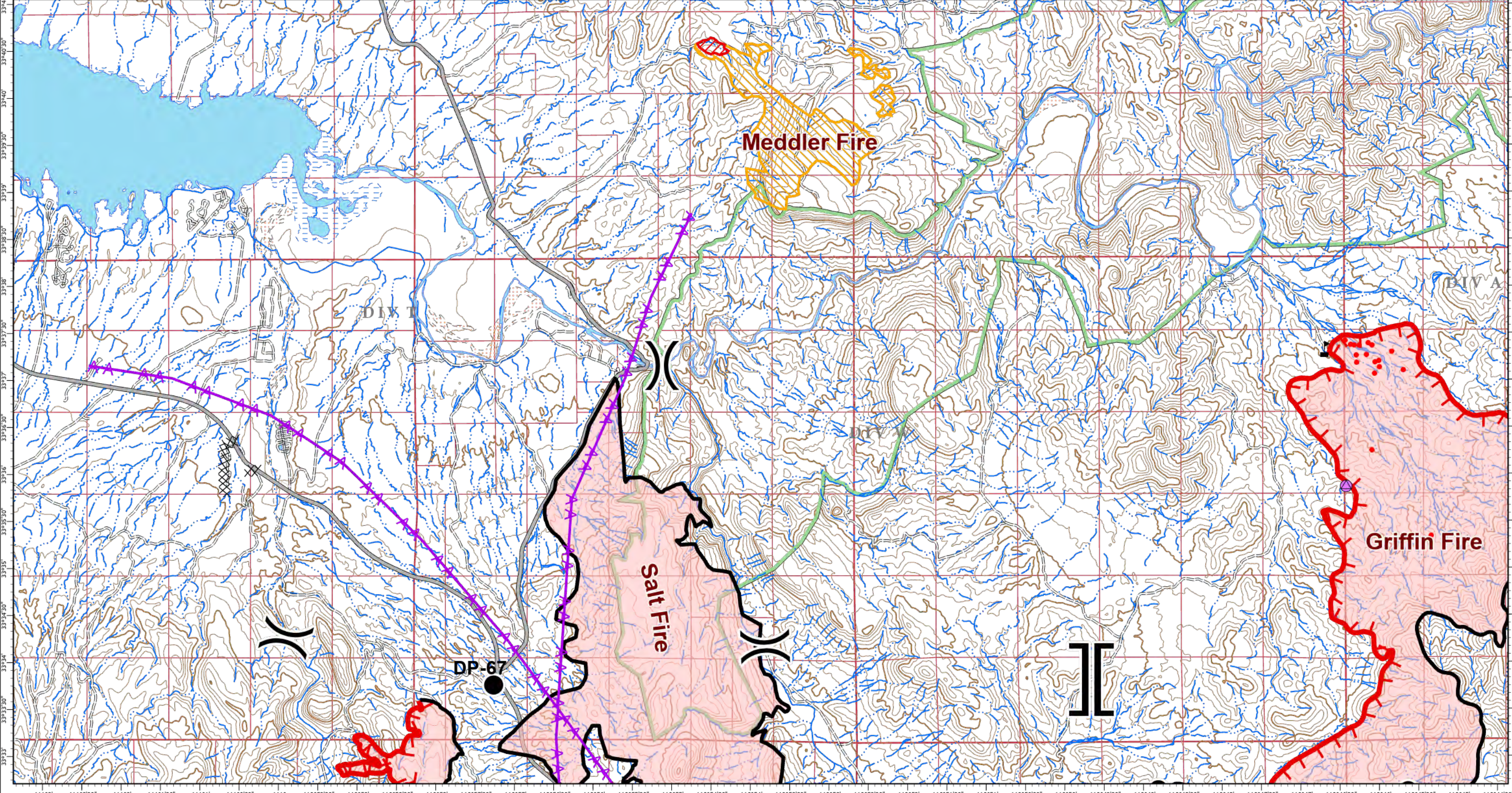
- Transportation**
- Controlled access
 - Highway or ramp
 - Local connector
 - Local or 4WD road
 - Tunnel
 - Ferry
 - IR
 - 20200825_Griffin_Scattered

Salt: 20,809 acres
 Griffin: 42,040 acres
 NAD_1983_UTM_Zone_12N



Southwest Area

 Incident Management Team 5



Salt and Griffin Fires
 IAP Map
 AZ-TNF-002511
 Page #10
 DIV W

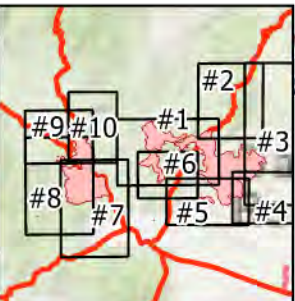
8/25/2020 Day
 0 0.75 1.5 3 Miles



- Drop Point
- Helispot
- Repair Point
- ⊙ Repeater
- ⚠ Value at Risk
-) (Division Break
- ⌋ ⌋ Branch Break
- ▬ Uncontrolled Fire Edge
- ▬ Contained Line
- ⊗ Completed Dozer Line
- | Proposed Burnout
- ∧ Fire Break Planned or Incomplete
- ▬ Planned Fire Line
- ⚡ Aerial Hazard
- ▭ Wildfire Daily Fire Perimeter
- ▬ Controlled access
- ▬ Highway or ramp
- ▬ Local connector
- ▬ Local or 4WD road
- ⚡ Tunnel
- ▬ Ferry

- IR
- 20200825_Griffin_Isolated
 - ▨ 20200825_Griffin_Intense
 - ▨ 20200825_Griffin_Scattered

Salt: 20,809 acres
 Griffin: 42,040 acres
 NAD_1983_UTM_Zone_12N



Created: 8/25/2020 10:58 AM by rubenrodriguez