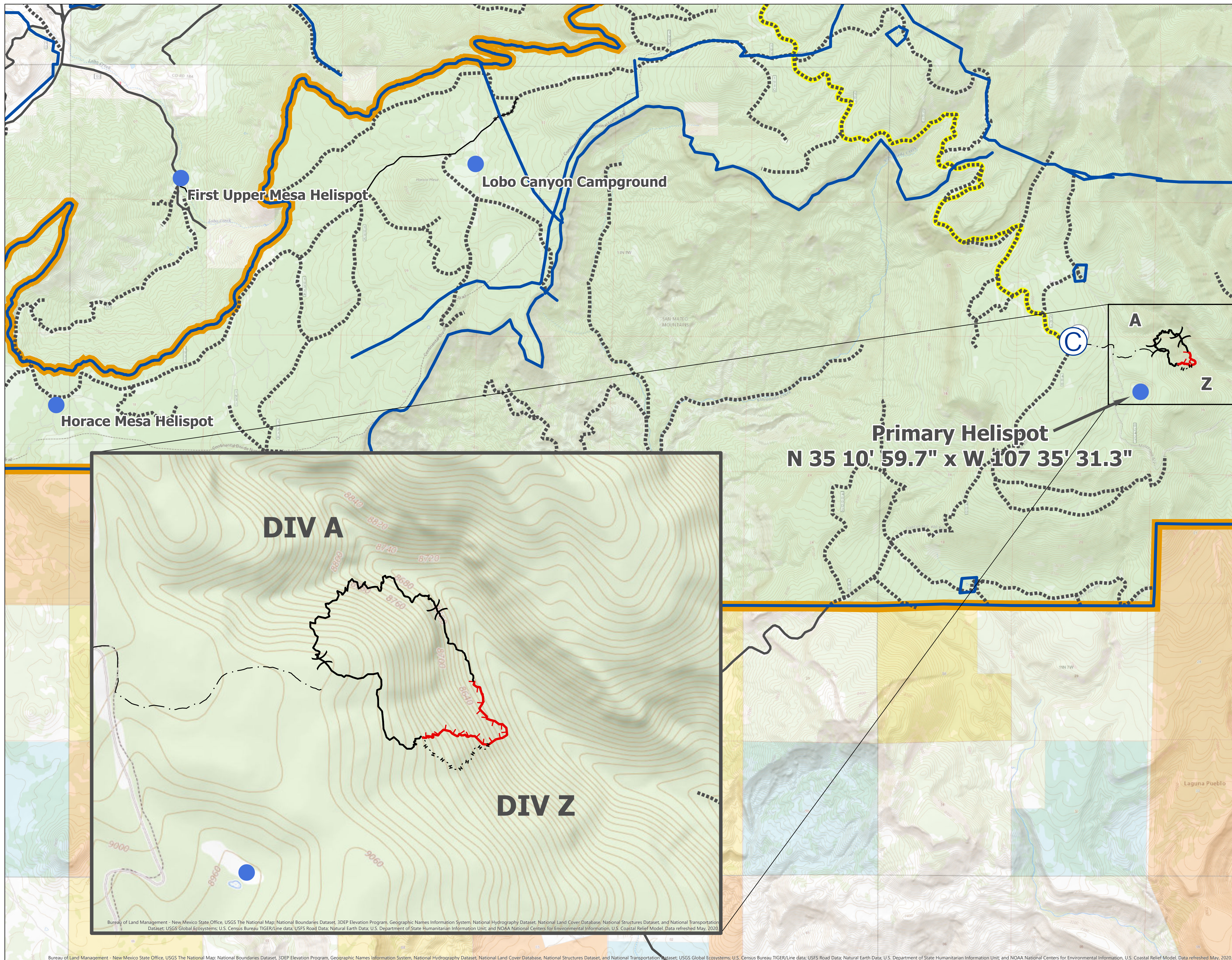


Seco Fire August 12, 2020

Approx 26.2 Acres
8/9/20 1800



- Perimeter
- Controlled Line
- ⋯ Handline as Contingency
- - Temporary Road
-) (Division Break
- ⊙ Spike Camp
- ⊕ Microwave Station
- Helispot
- American Indian Reservation/Trust
- Bureau of Land Management
- State
- US Forest Service
- ALLOTMENT
- Fencelines, Pipelines, etc
- Travel Route
- ⋯ High Clearance Vehicle
- Suitable for Passenger Car
- FirePoly_20200809_1800
- Layer



Bureau of Land Management - New Mexico State Office, USGS The National Map, National Boundaries Dataset, 3DEP Elevation Program, Geographic Names Information System, National Hydrography Dataset, National Land Cover Database, National Structures Dataset, and National Transportation Dataset; USGS Global Ecosystems; U.S. Census Bureau TIGER/Line data; USFS Road Data; Natural Earth Data; U.S. Department of State Humanitarian Information Unit; and NOAA National Centers for Environmental Information, U.S. Coastal Relief Model. Data refreshed May, 2020.