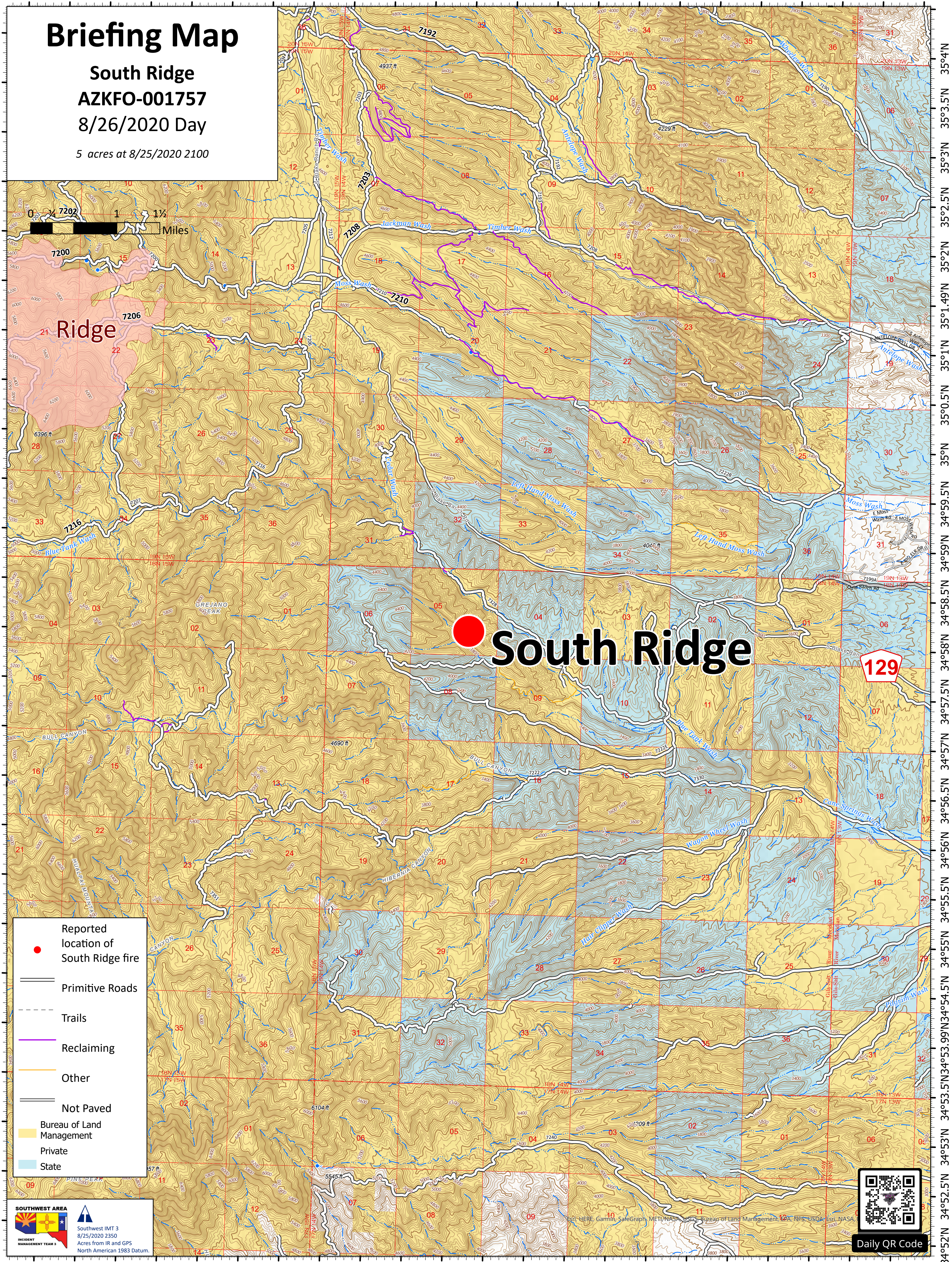
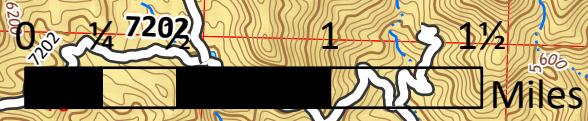


113°52.5'W 113°51.5'W 113°50.5'W 113°49.5'W 113°48.5'W 113°47.5'W 113°46.5'W 113°45.5'W 113°44.5'W 113°43.51'W 113°42.5'W 113°41.5'W

Briefing Map

South Ridge
AZKFO-001757
8/26/2020 Day
5 acres at 8/25/2020 2100



South Ridge

129

- Reported location of South Ridge fire
- Primitive Roads
- - - Trails
- Reclaiming
- Other
- Not Paved
- Bureau of Land Management
- Private
- State

SOUTHWEST AREA

Southwest IMT 3
8/25/2020 2350
Acres from IR and GPS
North American 1983 Datum.



Daily QR Code

113°52'W 113°51.01'W 113°50'W 113°49'W 113°48'W 113°47'W 113°46'W 113°45'W 113°44'W 113°43'W 113°42'W