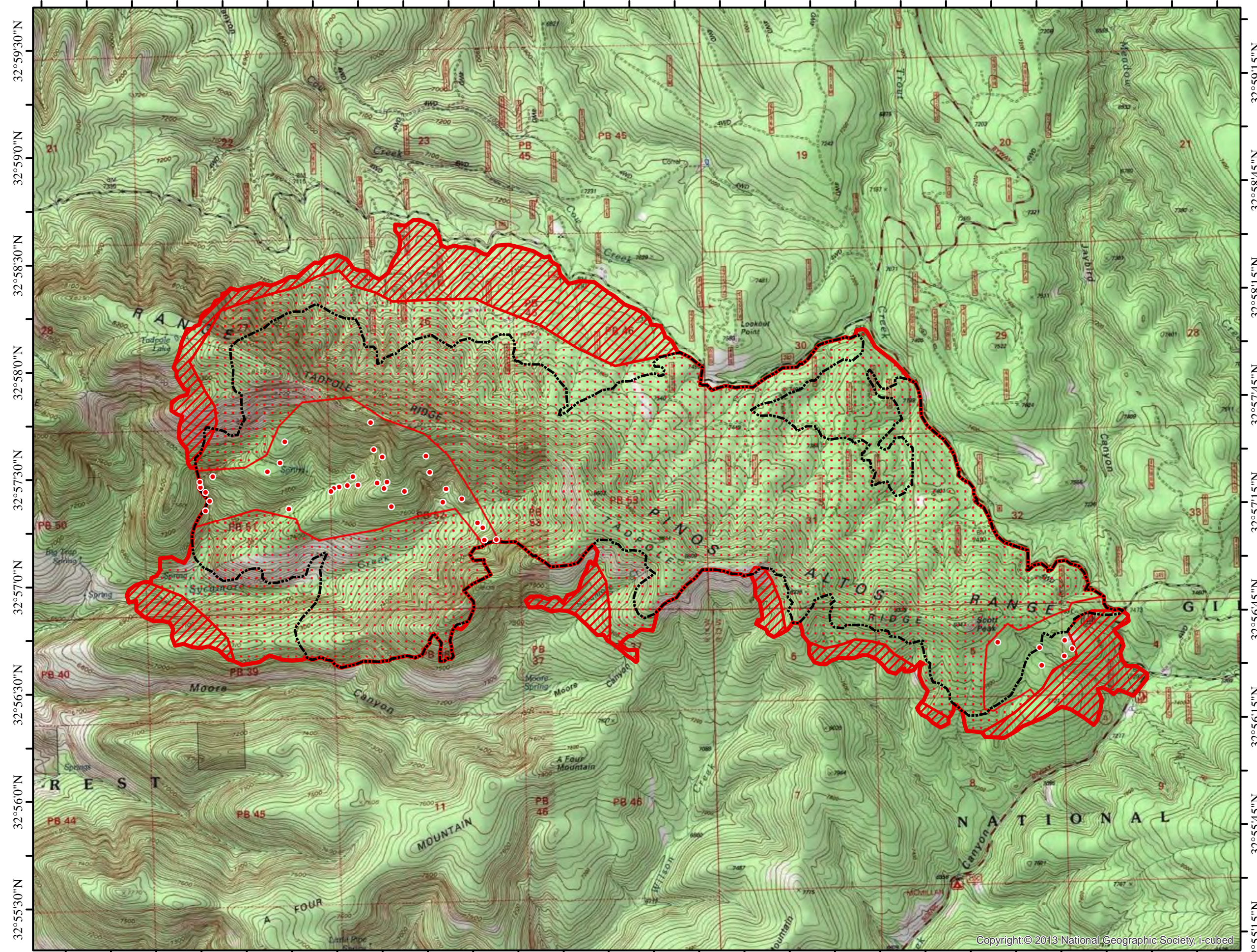
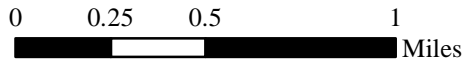
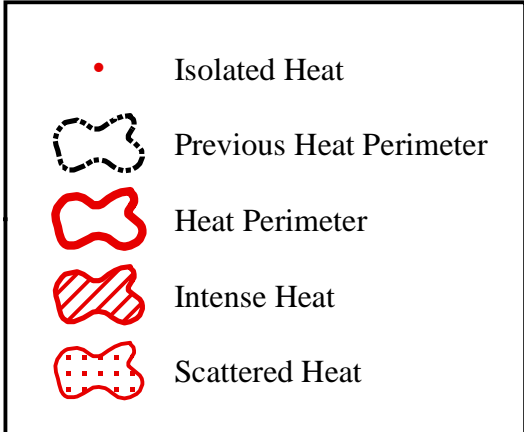


108°17'45"W 108°17'15"W 108°16'45"W 108°16'15"W 108°15'45"W 108°15'15"W 108°14'45"W 108°14'15"W 108°13'45"W 108°13'15"W 108°12'45"W 108°12'15"W 108°11'45"W 108°11'15"W



108°17'30"W 108°17'0"W 108°16'30"W 108°16'0"W 108°15'30"W 108°15'0"W 108°14'30"W 108°14'0"W 108°13'30"W 108°13'0"W 108°12'30"W 108°12'0"W 108°11'30"W

INFRARED MAP
TADPOLE
NM-GNF-000232
Interpreted (IR) Acres: 5,127
June 10, 2020 @ 2216 MDT



IRIN: Cheron Ferland
Taos, NM
Nad 83 UTM Zone 12

Copyright:© 2013 National Geographic Society, i-cubed