

112°37'W 112°36.5'W 112°36.01'W 112°35.5'W 112°35'W 112°34.5'W 112°34'W 112°33.5'W 112°33'W 112°32.5'W 112°32'W

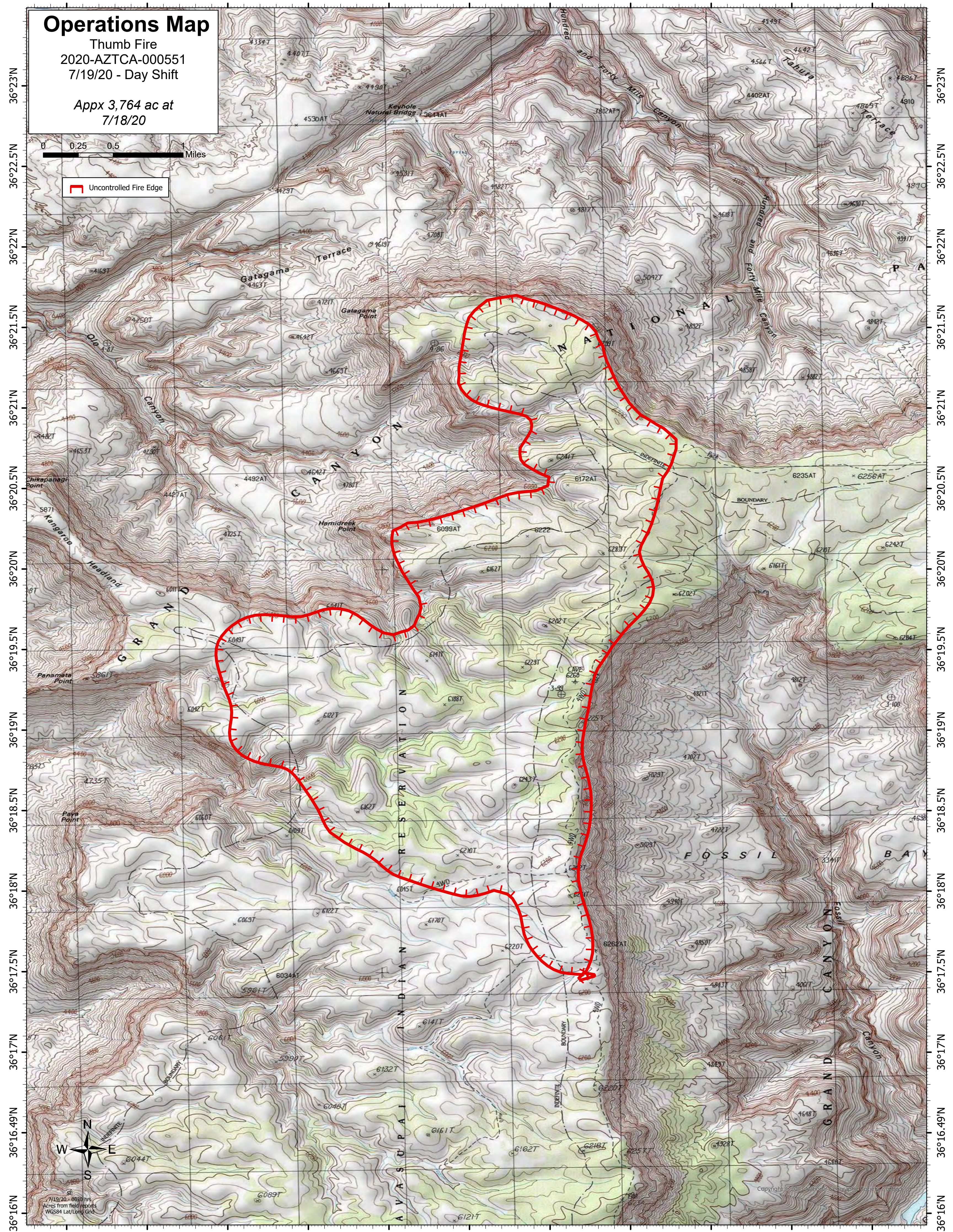
Operations Map

Thumb Fire
2020-AZTCA-000551
7/19/20 - Day Shift

Appx 3,764 ac at
7/18/20

0 0.25 0.5 1 Miles

Uncontrolled Fire Edge



112°37'W 112°36.5'W 112°36.01'W 112°35.5'W 112°35'W 112°34.5'W 112°34'W 112°33.5'W 112°33'W 112°32.5'W 112°32'W

7/19/20 - 0630 hrs
Acres from field reports
WGS84 Lat/Long Grid

Copyright © 2013 National Geographic Society