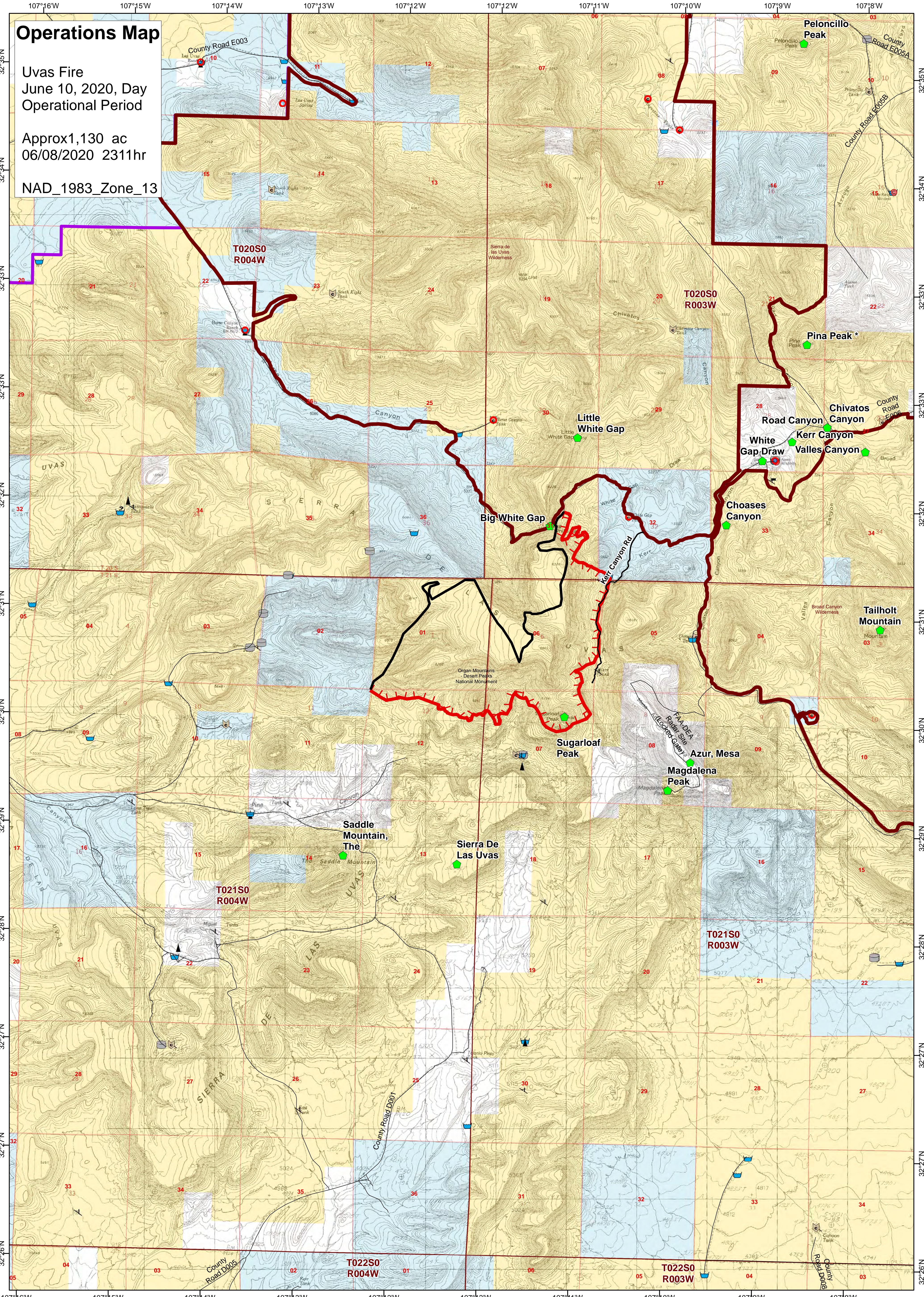


# Operations Map

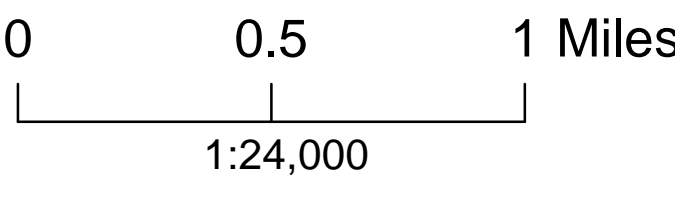
Uvas Fire  
June 10, 2020, Day  
Operational Period

Approx 1,130 ac  
06/08/2020 2311hr

NAD\_1983\_Zone\_13



RRodriguez (GIS) June 9, 2020



1:24,000

- |                    |                        |                            |              |                          |
|--------------------|------------------------|----------------------------|--------------|--------------------------|
| Peaks and Valleys  | Uncontrolled Fire Edge | <b>Range Improvements</b>  | Reservoir    | <b>Surface Ownership</b> |
| Kerr Canyon Road   | Completed Line         | Unattributed               | Springs      | BLM                      |
| Wilderness Areas   | Roads                  | Base Water                 | Storage tank | Private                  |
| National Monuments | Townships              | Cattleguard                | Trough       | State                    |
|                    | Sections               | Check Dams, Earthen        | Well         |                          |
|                    |                        | Corrals and loading chutes | Windmill     |                          |

