

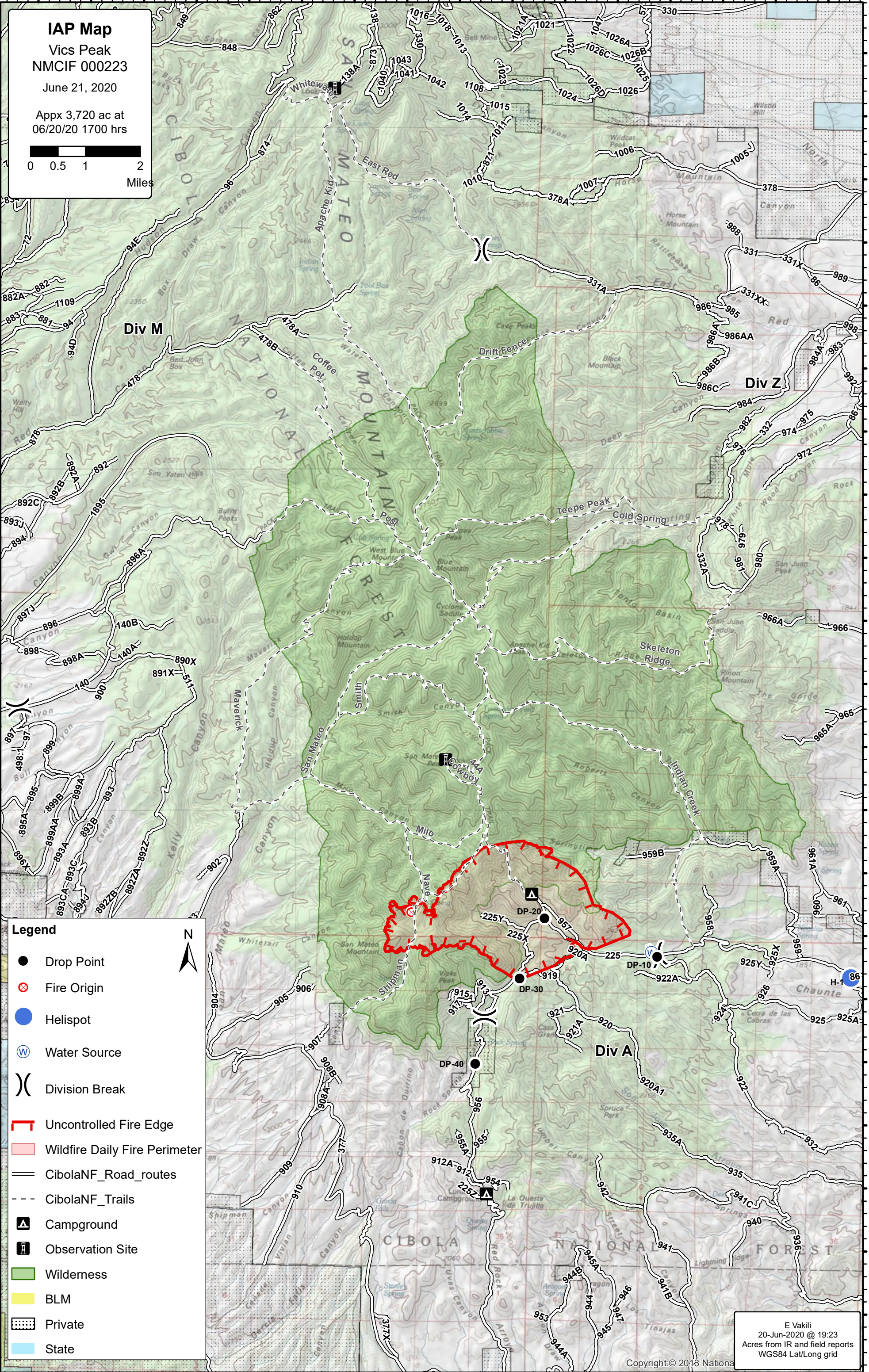
107°34'W 107°33'W 107°32'W 107°31'W 107°30'W 107°29'W 107°28'W 107°27'W 107°26'W 107°25'W 107°24'W 107°23'W 107°22'W 107°21'W 107°20'W 107°19'W

33°48'N 33°47'N 33°46'N 33°45'N 33°44'N 33°43'N 33°42'N 33°41'N 33°40'N 33°39'N 33°38'N 33°37'N 33°36'N 33°35'N 33°34'N 33°33'N 33°32'N 33°31'N 33°30'N 33°29'N 33°28'N 33°27'N

IAP Map
 Vics Peak
 NMCIF 000223
 June 21, 2020

Appx 3,720 ac at
 06/20/20 1700 hrs

0 0.5 1 2
 Miles



Legend

- Drop Point
- ⊗ Fire Origin
- Helispot
- Ⓜ Water Source
- ⌘ Division Break
- ┌ Uncontrolled Fire Edge
- ▭ Wildfire Daily Fire Perimeter
- CibolaNF_Road_routes
- - - CibolaNF_Trails
- ▲ Campground
- Observation Site
- Wilderness
- BLM
- Private
- State

E Vakili
 20-Jun-2020 @ 19:23
 Acres from IR and field reports
 WGS84 Lat/Long grid

Copyright © 2018 National Geographic