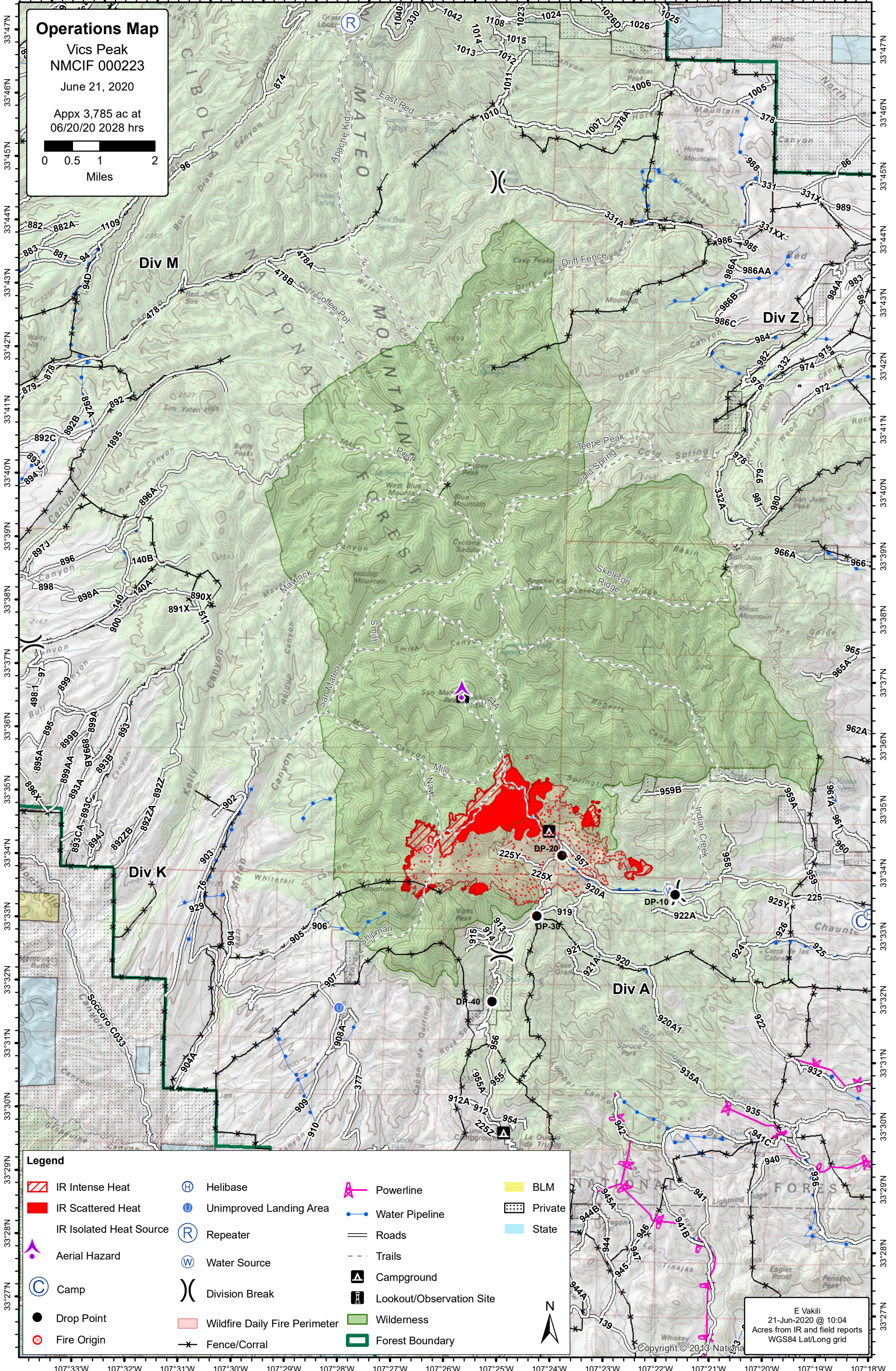


107°34'W 107°33'W 107°32'W 107°31'W 107°30'W 107°29'W 107°28'W 107°27'W 107°26'W 107°25'W 107°24'W 107°23'W 107°22'W 107°21'W 107°20'W 107°19'W

Operations Map
 Vics Peak
 NMCIF 000223
 June 21, 2020
 Appx 3,785 ac at
 06/20/20 2028 hrs

0 0.5 1 2
Miles



Legend

IR Intense Heat	Helibase	Powerline	BLM
IR Scattered Heat	Unimproved Landing Area	Water Pipeline	Private
IR Isolated Heat Source	Repeater	Roads	State
Aerial Hazard	Water Source	Trails	Wilderness
Camp	Division Break	Campground	Forest Boundary
Drop Point	Wildfire Daily Fire Perimeter	Lookout/Observation Site	
Fire Origin	Fence/Corral		

E Vakili
 21-Jun-2020 @ 10:04
 Acres from IR and field reports
 WGS84 Lat/Long grid

Copyright © 2013 National Geographic

107°33'W 107°32'W 107°31'W 107°30'W 107°29'W 107°28'W 107°27'W 107°26'W 107°25'W 107°24'W 107°23'W 107°22'W 107°21'W 107°20'W 107°19'W