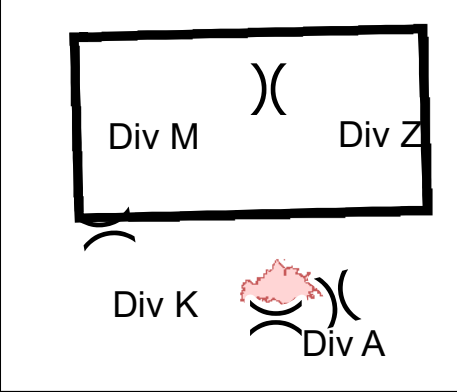
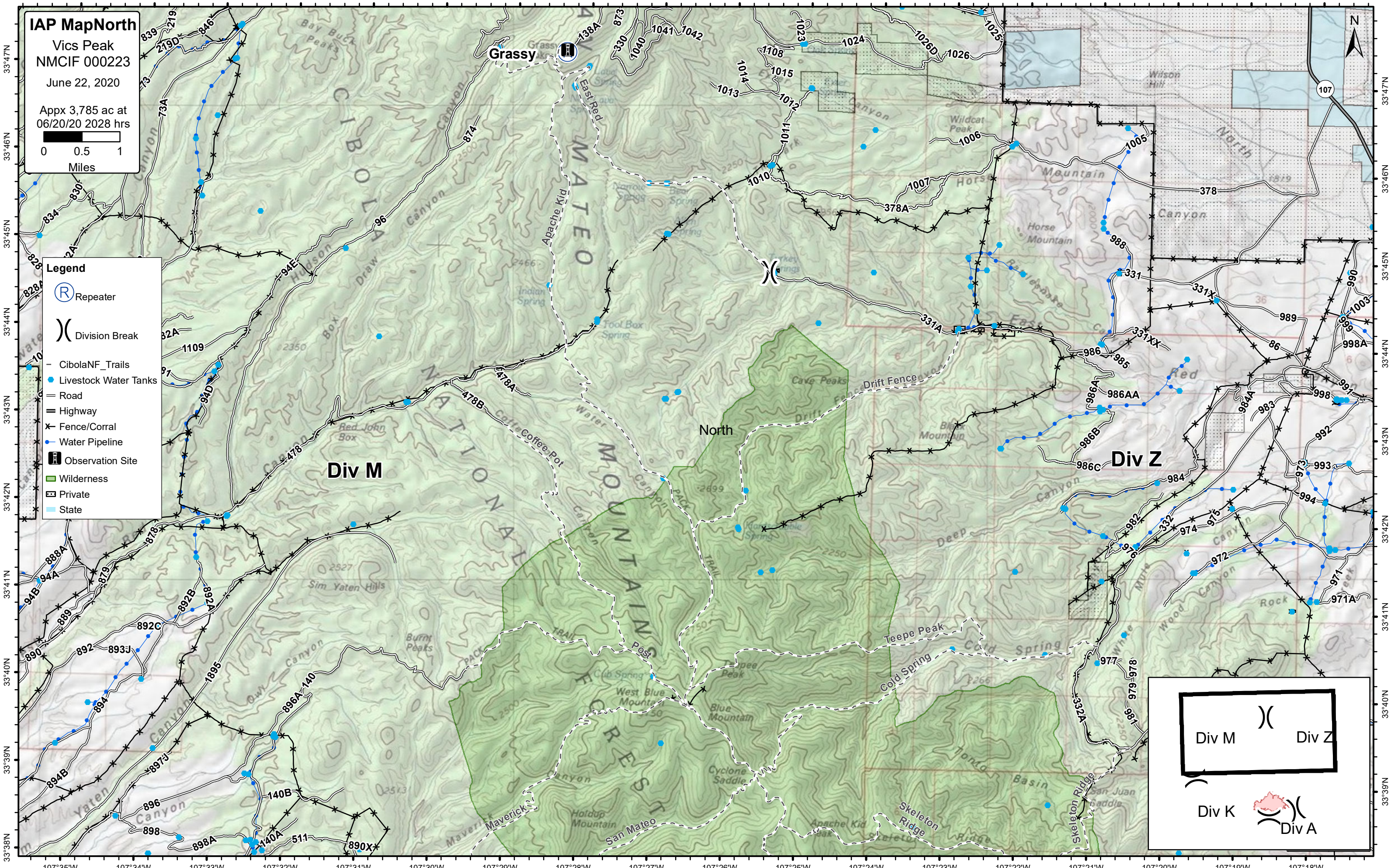


IAP MapNorth
 Vics Peak
 NMCIF 000223
 June 22, 2020
 Appx 3,785 ac at
 06/20/20 2028 hrs

0 0.5 1
 Miles

- Legend**
- Repeater
 - Division Break
 - CibolaNF_Trails
 - Livestock Water Tanks
 - Road
 - Highway
 - Fence/Corral
 - Water Pipeline
 - Observation Site
 - Wilderness
 - Private
 - State



107°35'W 107°34'W 107°33'W 107°32'W 107°31'W 107°30'W 107°29'W 107°28'W 107°27'W 107°26'W 107°25'W 107°24'W 107°23'W 107°22'W 107°21'W 107°20'W 107°19'W 107°18'W

33°47'N
33°46'N
33°45'N
33°44'N
33°43'N
33°42'N
33°41'N
33°40'N
33°39'N
33°38'N

33°47'N
33°46'N
33°45'N
33°44'N
33°43'N
33°42'N
33°41'N
33°40'N
33°39'N
33°38'N

IAP MapSouth
 Vics Peak
 NMCIF 000223
 June 22, 2020
 Appx 3,785 ac at
 06/20/20 2028 hrs

0 0.5 1
 Miles

- Legend**
- Aerial Hazard
 - Camp
 - Drop Point
 - Fire Origin
 - Helibase
 - Unimproved Landing Area
 - Mobile Weather Unit
 - Water Source
 - Division Break
 - Uncontrolled Fire Edge
 - Wildfire Daily Fire Perimeter
 - CibolaNF_Trails
 - Livestock Water Tanks
 - Road
 - Fence/Corral
 - Powerline
 - Water Pipeline
 - Campground
 - Observation Site
 - Wilderness
 - BLM
 - Private
 - State

