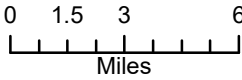


Vics Peak NMCIF 000223

Transportation Map
June 27, 2020



To Magdalena
(30 miles from
FS Rd 549
to US-60)

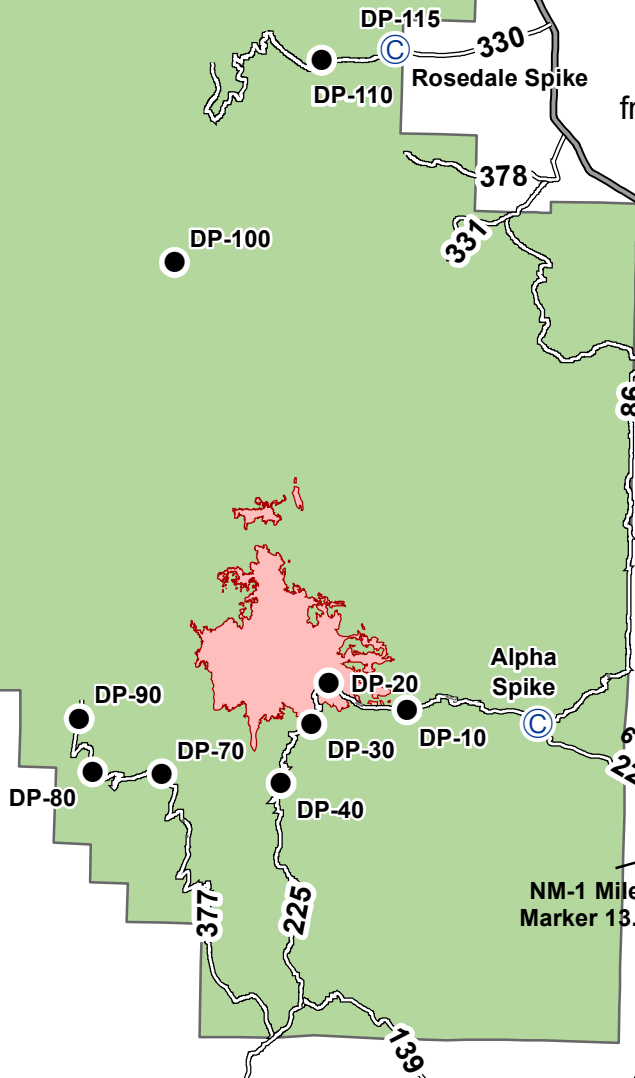
To Magdalena
(23 miles from
FS Rd 330)

To Socorro
(19 miles
from FS Rd 330
to I-25)

I-25 Exit 115
to NM-1

Legend

- Spike Camp
- Drop Point
- Site_Avoid
- Forest Road
- Highway
- Interstate
- Fire Perimeter
- Forest Service Boundary



6 miles
225
NM-1 Mile
Marker 13.5