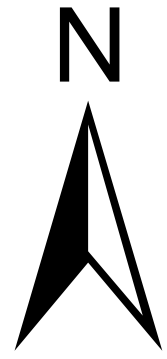


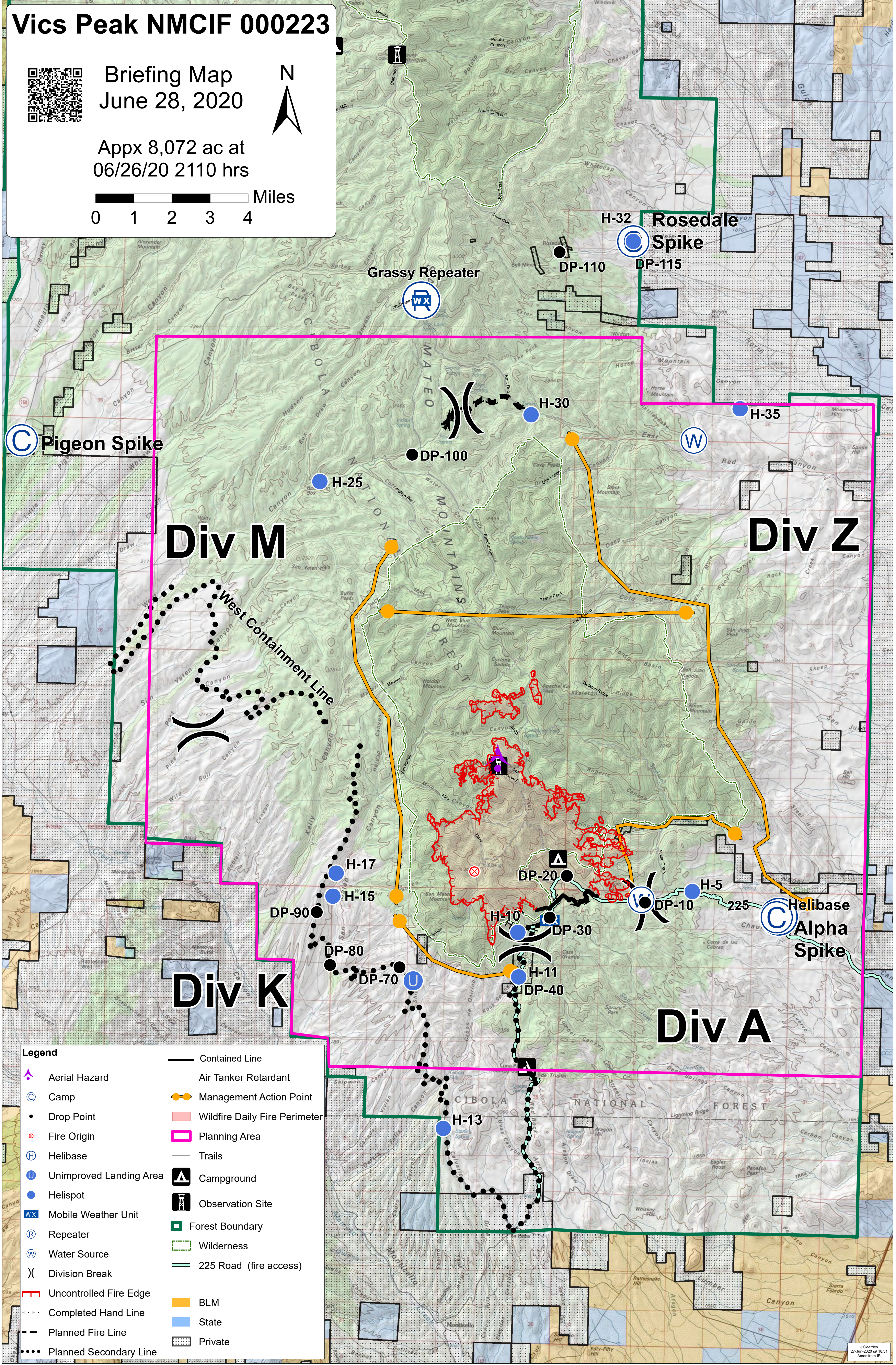
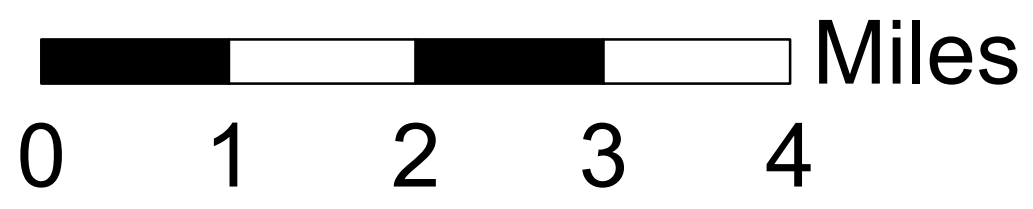
Vics Peak NMCIF 000223



Briefing Map
June 28, 2020



Appx 8,072 ac at
06/26/20 2110 hrs



© Pigeon Spike

H-32
Rosedale
Spike
DP-115

Grassy Repeater

DP-110



H-35



Div M

Div Z

West Containment Line

H-25

DP-100

H-30

H-35

Div K

Div A

© Helibase
Alpha Spike

H-17

H-15

DP-90

DP-20

H-5

DP-10

DP-80

H-10

DP-30

DP-70

H-11

DP-40

H-13

Legend	
	Aerial Hazard
	Camp
	Drop Point
	Fire Origin
	Helibase
	Unimproved Landing Area
	Helispot
	Mobile Weather Unit
	Repeater
	Water Source
	Division Break
	Uncontrolled Fire Edge
	Completed Hand Line
	Planned Fire Line
	Planned Secondary Line
	Contained Line
	Air Tanker Retardant
	Management Action Point
	Wildfire Daily Fire Perimeter
	Planning Area
	Trails
	Campground
	Observation Site
	Forest Boundary
	Wilderness
	225 Road (fire access)
	BLM
	State
	Private