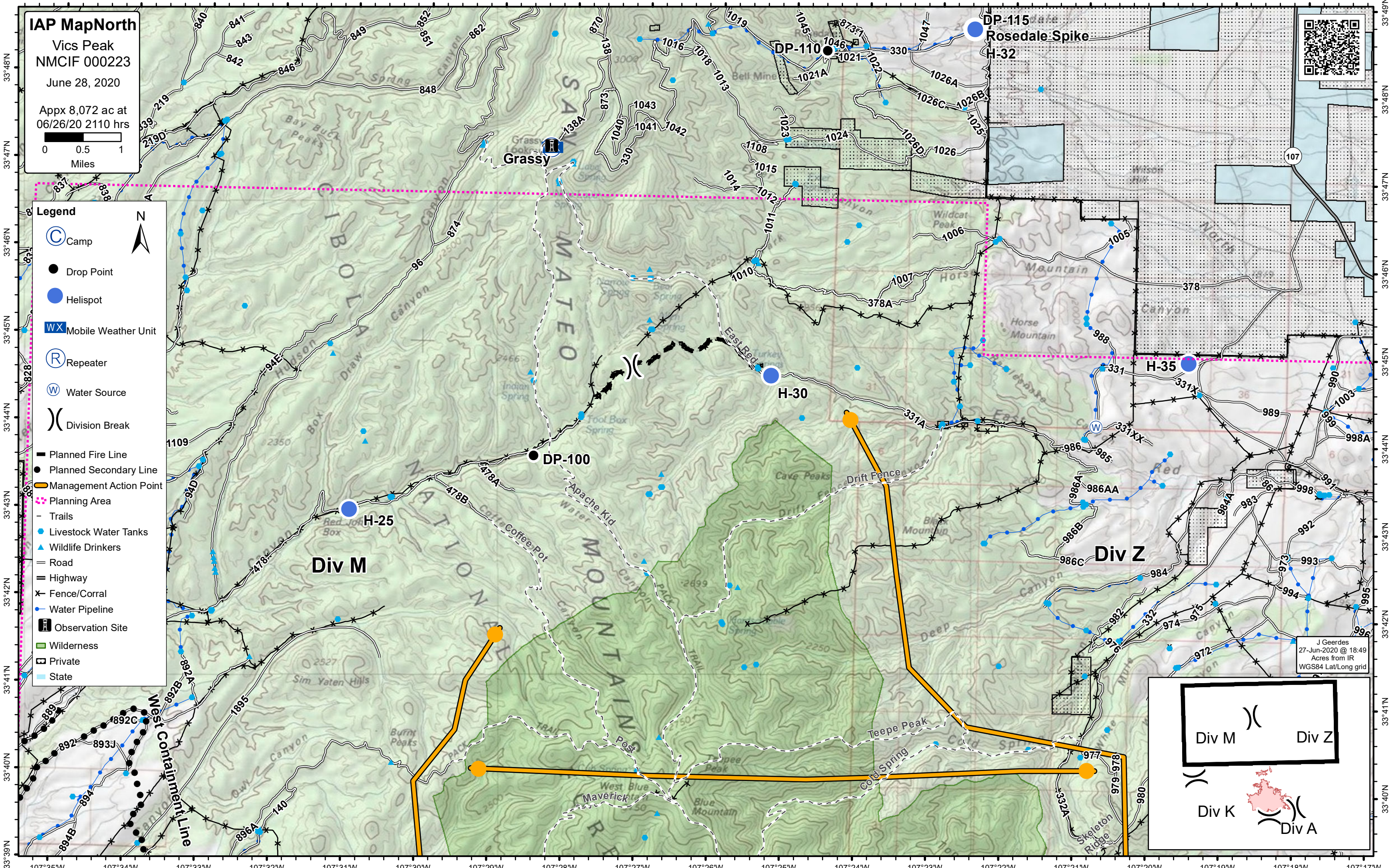
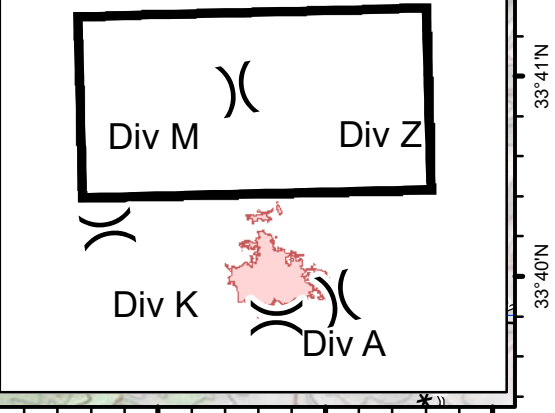


IAP MapNorth
 Vics Peak
 NMCIF 000223
 June 28, 2020
 Appx 8,072 ac at
 06/26/20 2110 hrs

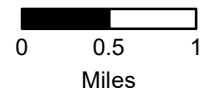
- Legend**
- Camp
 - Drop Point
 - Helispot
 - Mobile Weather Unit
 - Repeater
 - Water Source
 - Division Break
 - Planned Fire Line
 - Planned Secondary Line
 - Management Action Point
 - Planning Area
 - Trails
 - Livestock Water Tanks
 - Wildlife Drinkers
 - Road
 - Highway
 - Fence/Corral
 - Water Pipeline
 - Observation Site
 - Wilderness
 - Private
 - State



J Geerdes
 27-Jun-2020 @ 18:49
 Acres from IR
 WGS84 Lat/Long grid

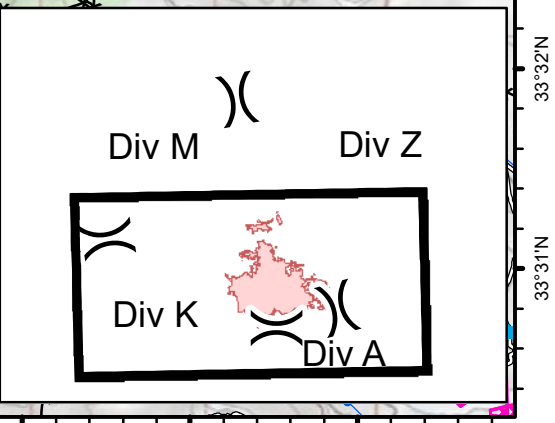
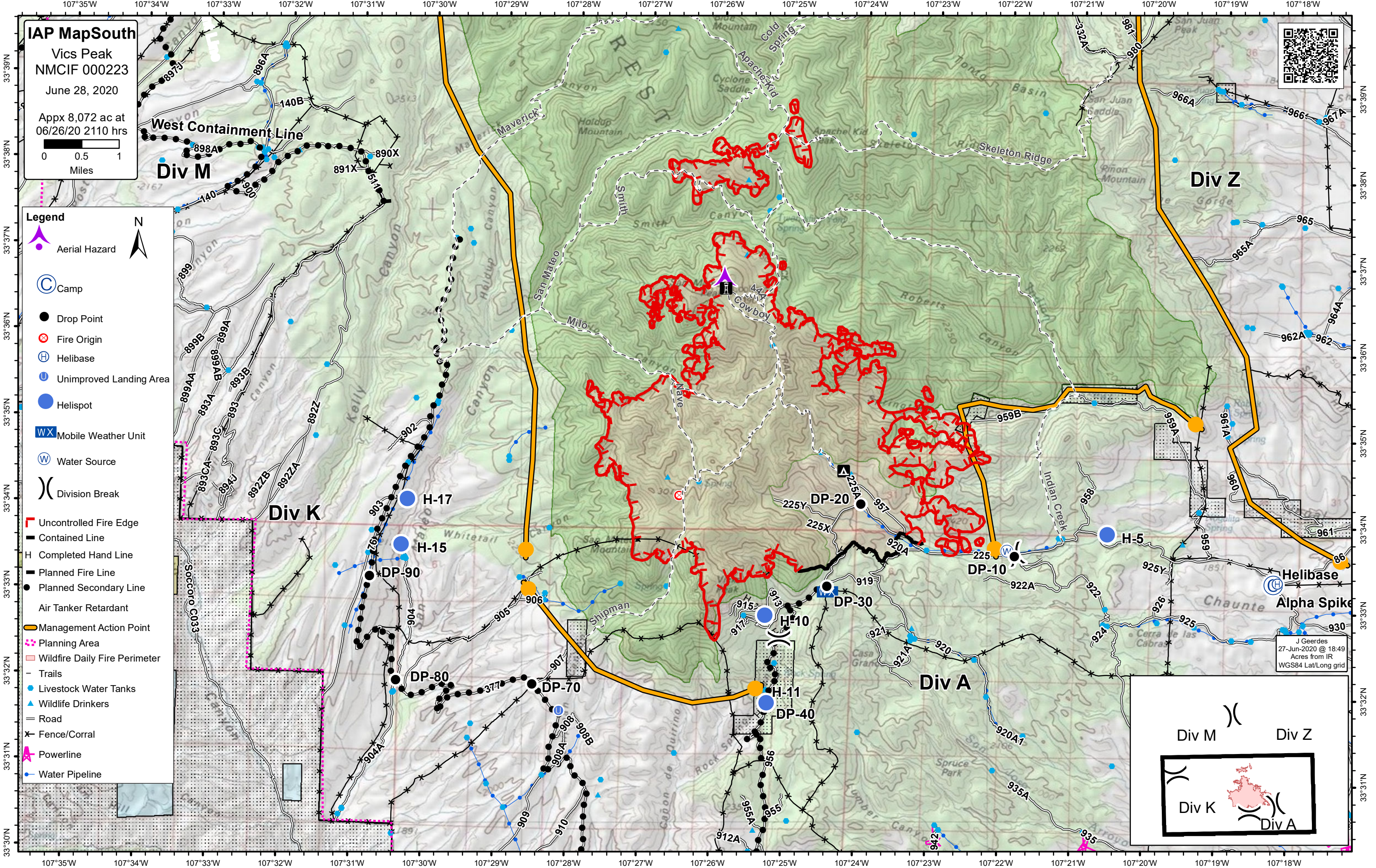


IAP MapSouth
Vics Peak
NMCIF 000223
June 28, 2020
Appx 8,072 ac at
06/26/20 2110 hrs



- Legend**
- Aerial Hazard
 - Camp
 - Drop Point
 - Fire Origin
 - Helibase
 - Unimproved Landing Area
 - Helispot
 - Mobile Weather Unit
 - Water Source
 - Division Break

- Uncontrolled Fire Edge
- Contained Line
- Completed Hand Line
- Planned Fire Line
- Planned Secondary Line
- Air Tanker Retardant
- Management Action Point
- Planning Area
- Wildfire Daily Fire Perimeter
- Trails
- Livestock Water Tanks
- Wildlife Drinkers
- Road
- Fence/Corral
- Powerline
- Water Pipeline



J Geerdes
27-Jun-2020 @ 18:49
Acres from IR
WGS84 Lat/Long grid