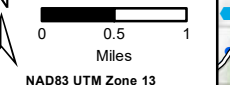


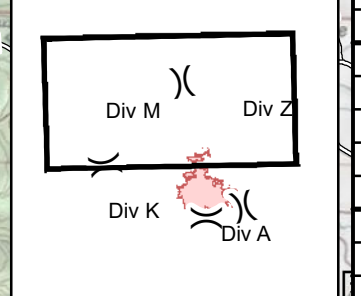
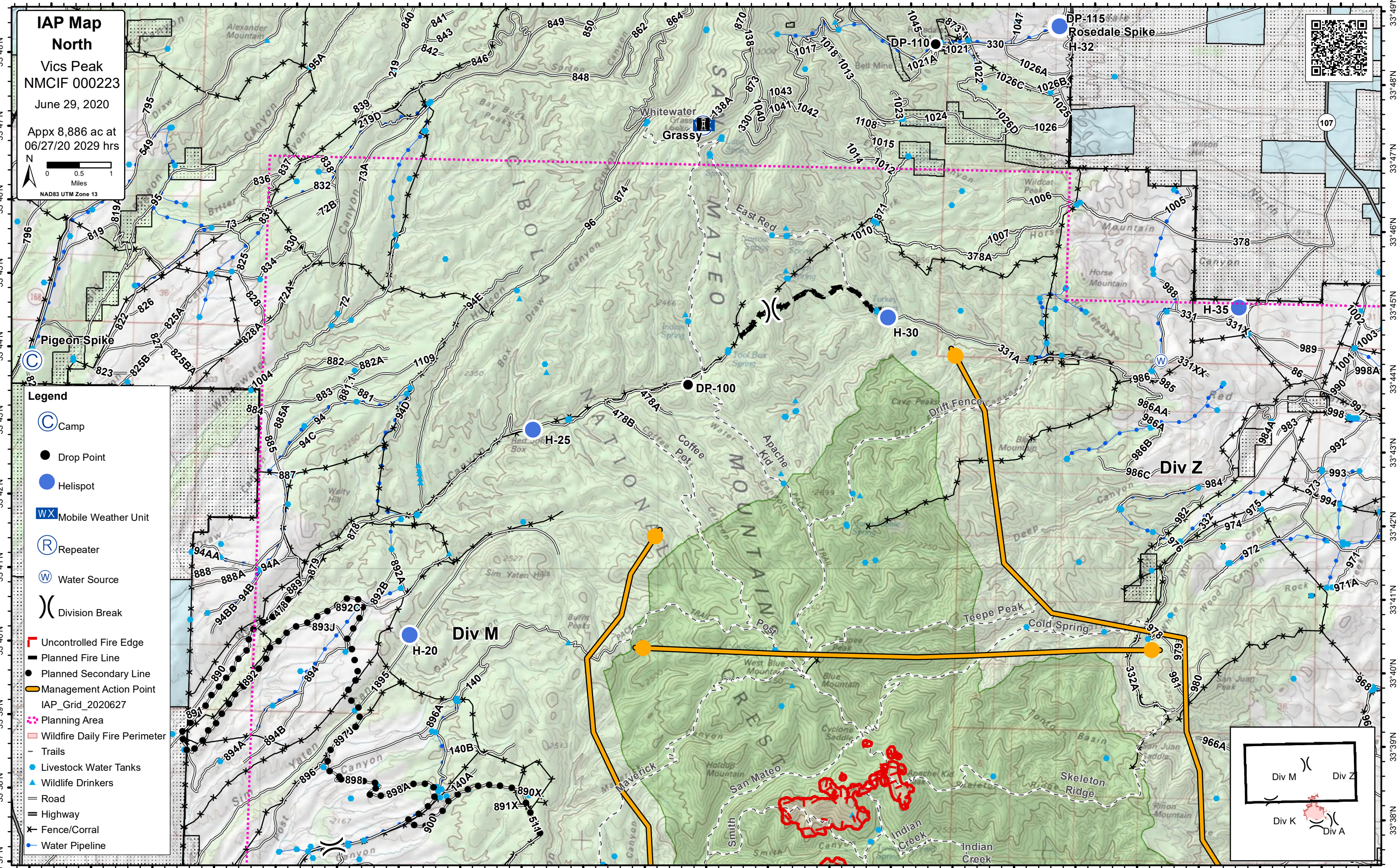
107°39'W 107°38'W 107°37'W 107°36'W 107°35'W 107°34'W 107°33'W 107°32'W 107°31'W 107°30'W 107°29'W 107°28'W 107°27'W 107°26'W 107°25'W 107°24'W 107°23'W 107°22'W 107°21'W 107°20'W 107°19'W 107°18'W

**IAP Map**  
**North**  
Vics Peak  
NMCIF 000223  
June 29, 2020

Appx 8,886 ac at  
06/27/20 2029 hrs



- Legend**
- Camp
  - Drop Point
  - Helispot
  - Mobile Weather Unit
  - Repeater
  - Water Source
  - Division Break
  - Uncontrolled Fire Edge
  - Planned Fire Line
  - Planned Secondary Line
  - Management Action Point
  - IAP\_Grid\_2020627
  - Planning Area
  - Wildfire Daily Fire Perimeter
  - Trails
  - Livestock Water Tanks
  - Wildlife Drinkers
  - Road
  - Highway
  - Fence/Corral
  - Water Pipeline



107°39'W 107°38'W 107°37'W 107°36'W 107°35'W 107°34'W 107°33'W 107°32'W 107°31'W 107°30'W 107°29'W 107°28'W 107°27'W 107°26'W 107°25'W 107°24'W 107°23'W 107°22'W 107°21'W 107°20'W 107°19'W 107°18'W

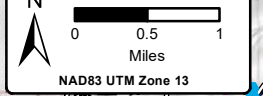
33°48'N  
33°47'N  
33°46'N  
33°45'N  
33°44'N  
33°43'N  
33°42'N  
33°41'N  
33°40'N  
33°39'N  
33°38'N  
33°37'N

33°49'N  
33°48'N  
33°47'N  
33°46'N  
33°45'N  
33°44'N  
33°43'N  
33°42'N  
33°41'N  
33°40'N  
33°39'N  
33°38'N

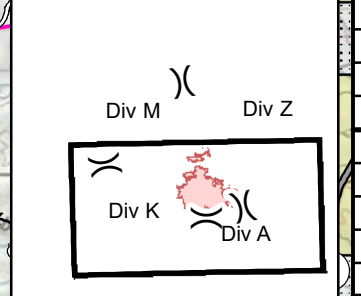
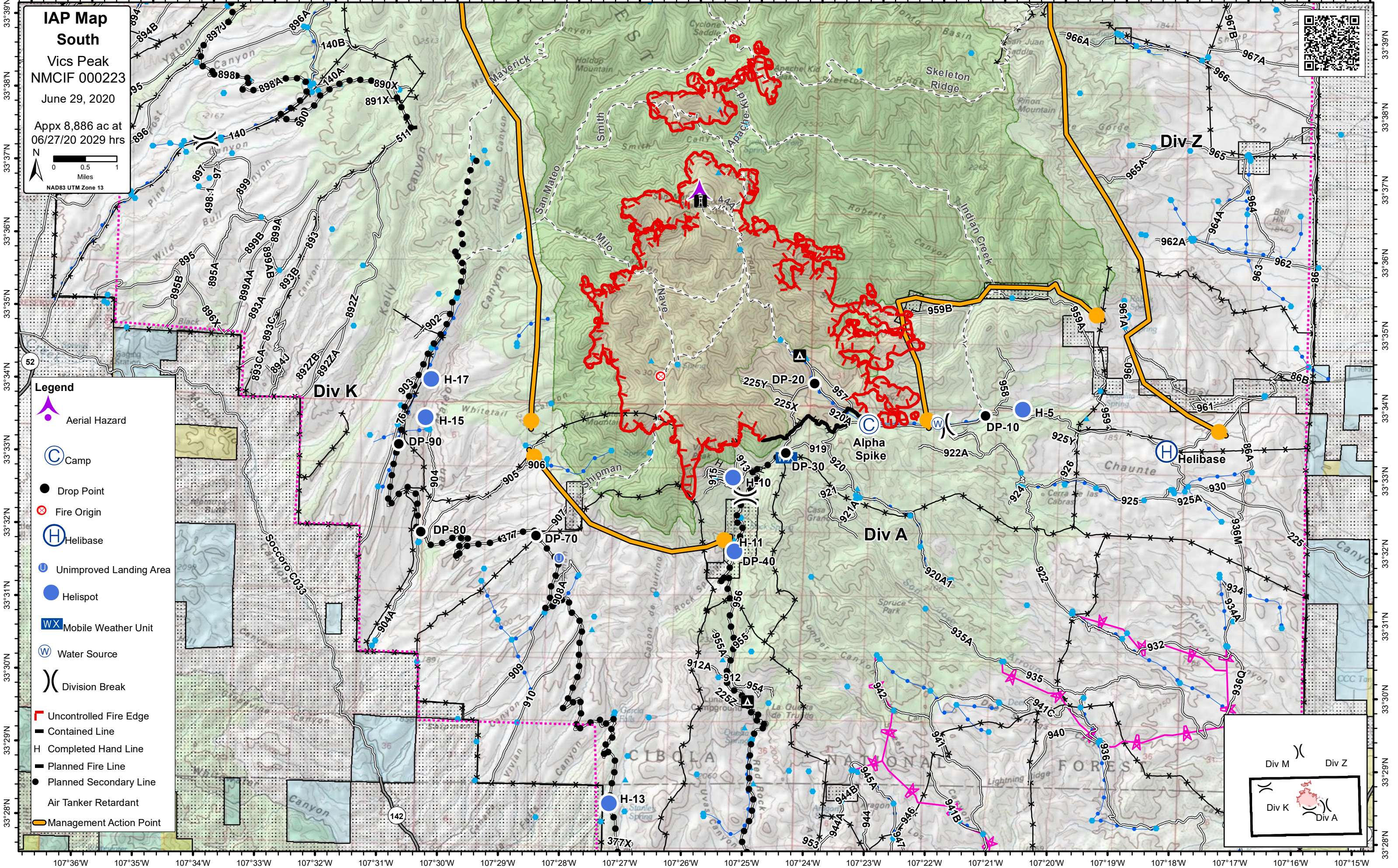


107°37'W 107°36'W 107°35'W 107°34'W 107°33'W 107°32'W 107°31'W 107°30'W 107°29'W 107°28'W 107°27'W 107°26'W 107°25'W 107°24'W 107°23'W 107°22'W 107°21'W 107°20'W 107°19'W 107°18'W 107°17'W 107°16'W 107°15'W

**IAP Map**  
**South**  
Vics Peak  
NMCIF 000223  
June 29, 2020  
Appx 8,886 ac at  
06/27/20 2029 hrs



- Legend**
- Aerial Hazard
  - Camp
  - Drop Point
  - Fire Origin
  - Helibase
  - Unimproved Landing Area
  - Helispot
  - Mobile Weather Unit
  - Water Source
  - Division Break
  - Uncontrolled Fire Edge
  - Contained Line
  - Completed Hand Line
  - Planned Fire Line
  - Planned Secondary Line
  - Air Tanker Retardant
  - Management Action Point



107°36'W 107°35'W 107°34'W 107°33'W 107°32'W 107°31'W 107°30'W 107°29'W 107°28'W 107°27'W 107°26'W 107°25'W 107°24'W 107°23'W 107°22'W 107°21'W 107°20'W 107°19'W 107°18'W 107°17'W 107°16'W 107°15'W