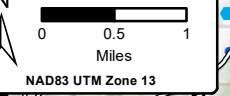
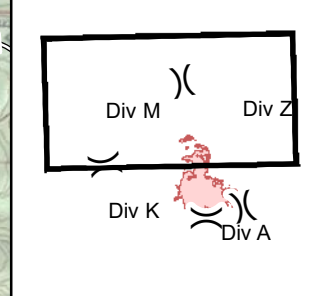
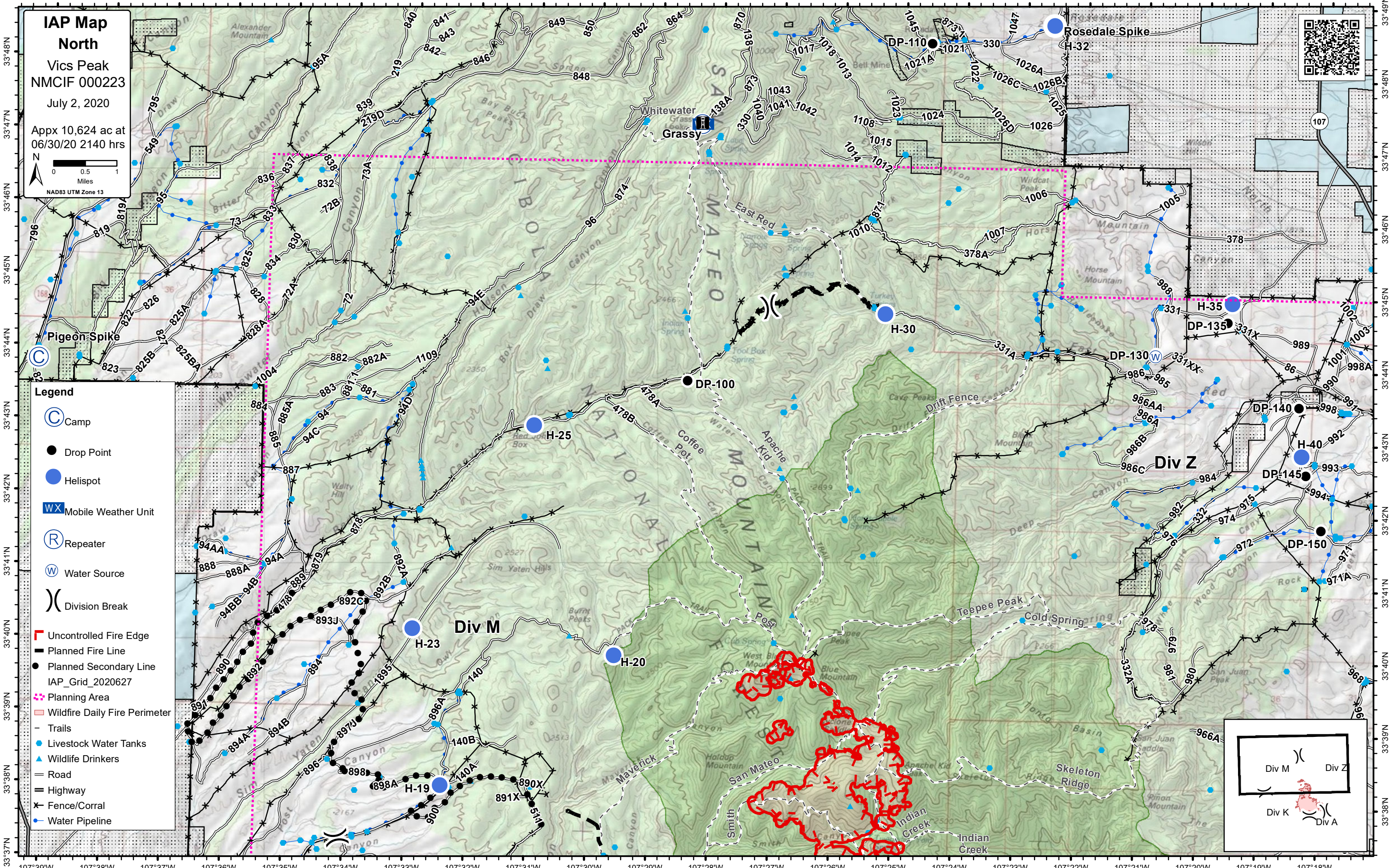


107°39'W 107°38'W 107°37'W 107°36'W 107°35'W 107°34'W 107°33'W 107°32'W 107°31'W 107°30'W 107°29'W 107°28'W 107°27'W 107°26'W 107°25'W 107°24'W 107°23'W 107°22'W 107°21'W 107°20'W 107°19'W 107°18'W

IAP Map
North
Vics Peak
NMCIF 000223
July 2, 2020
Appx 10,624 ac at
06/30/20 2140 hrs



- Legend**
- Camp
 - Drop Point
 - Helispot
 - Mobile Weather Unit
 - Repeater
 - Water Source
 - Division Break
 - Uncontrolled Fire Edge
 - Planned Fire Line
 - Planned Secondary Line
 - IAP_Grid_2020627
 - Planning Area
 - Wildfire Daily Fire Perimeter
 - Trails
 - Livestock Water Tanks
 - Wildlife Drinkers
 - Road
 - Highway
 - Fence/Corral
 - Water Pipeline



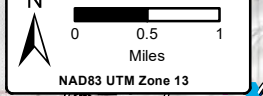
107°39'W 107°38'W 107°37'W 107°36'W 107°35'W 107°34'W 107°33'W 107°32'W 107°31'W 107°30'W 107°29'W 107°28'W 107°27'W 107°26'W 107°25'W 107°24'W 107°23'W 107°22'W 107°21'W 107°20'W 107°19'W 107°18'W

33°48'N 33°47'N 33°46'N 33°45'N 33°44'N 33°43'N 33°42'N 33°41'N 33°40'N 33°39'N 33°38'N 33°37'N

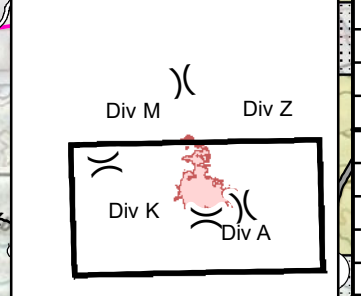
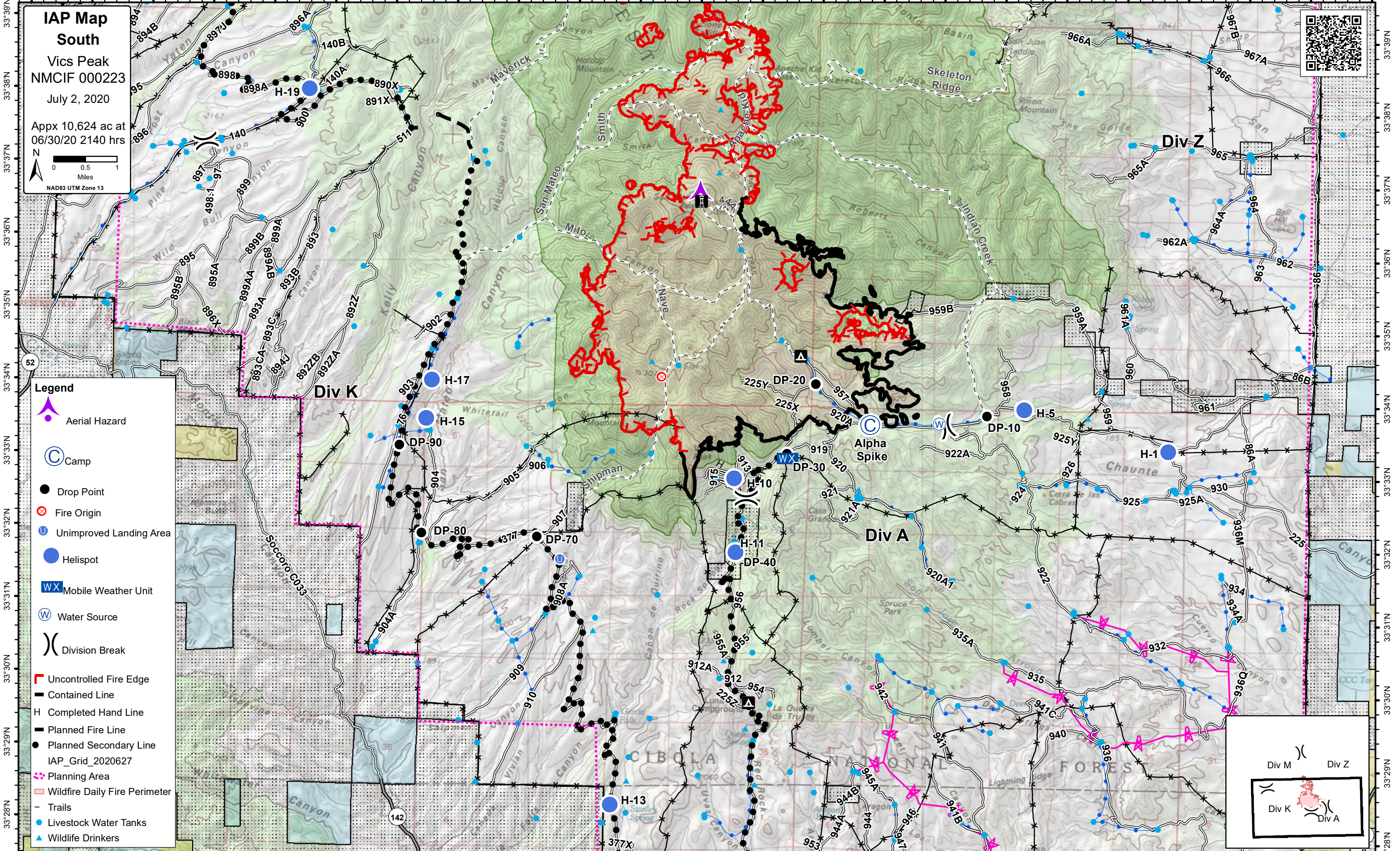
33°49'N 33°48'N 33°47'N 33°46'N 33°45'N 33°44'N 33°43'N 33°42'N 33°41'N 33°40'N 33°39'N 33°38'N

107°37'W 107°36'W 107°35'W 107°34'W 107°33'W 107°32'W 107°31'W 107°30'W 107°29'W 107°28'W 107°27'W 107°26'W 107°25'W 107°24'W 107°23'W 107°22'W 107°21'W 107°20'W 107°19'W 107°18'W 107°17'W 107°16'W 107°15'W

IAP Map
South
Vics Peak
NMCIF 000223
July 2, 2020
Appx 10,624 ac at
06/30/20 2140 hrs



- Legend**
- Aerial Hazard
 - Camp
 - Drop Point
 - Fire Origin
 - Unimproved Landing Area
 - Helispot
 - Mobile Weather Unit
 - Water Source
 - Division Break
 - Uncontrolled Fire Edge
 - Contained Line
 - Completed Hand Line
 - Planned Fire Line
 - Planned Secondary Line
 - IAP_Grid_2020627
 - Planning Area
 - Wildfire Daily Fire Perimeter
 - Trails
 - Livestock Water Tanks
 - Wildlife Drinkers



107°36'W 107°35'W 107°34'W 107°33'W 107°32'W 107°31'W 107°30'W 107°29'W 107°28'W 107°27'W 107°26'W 107°25'W 107°24'W 107°23'W 107°22'W 107°21'W 107°20'W 107°19'W 107°18'W 107°17'W 107°16'W 107°15'W

33°39'N 33°38'N 33°37'N 33°36'N 33°35'N 33°34'N 33°33'N 33°32'N 33°31'N 33°30'N 33°29'N 33°28'N

33°39'N 33°38'N 33°37'N 33°36'N 33°35'N 33°34'N 33°33'N 33°32'N 33°31'N 33°30'N 33°29'N 33°28'N