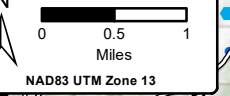


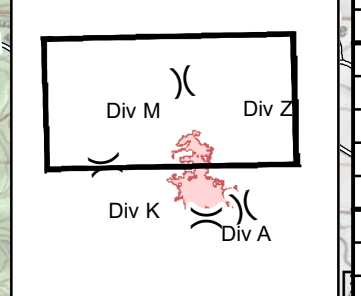
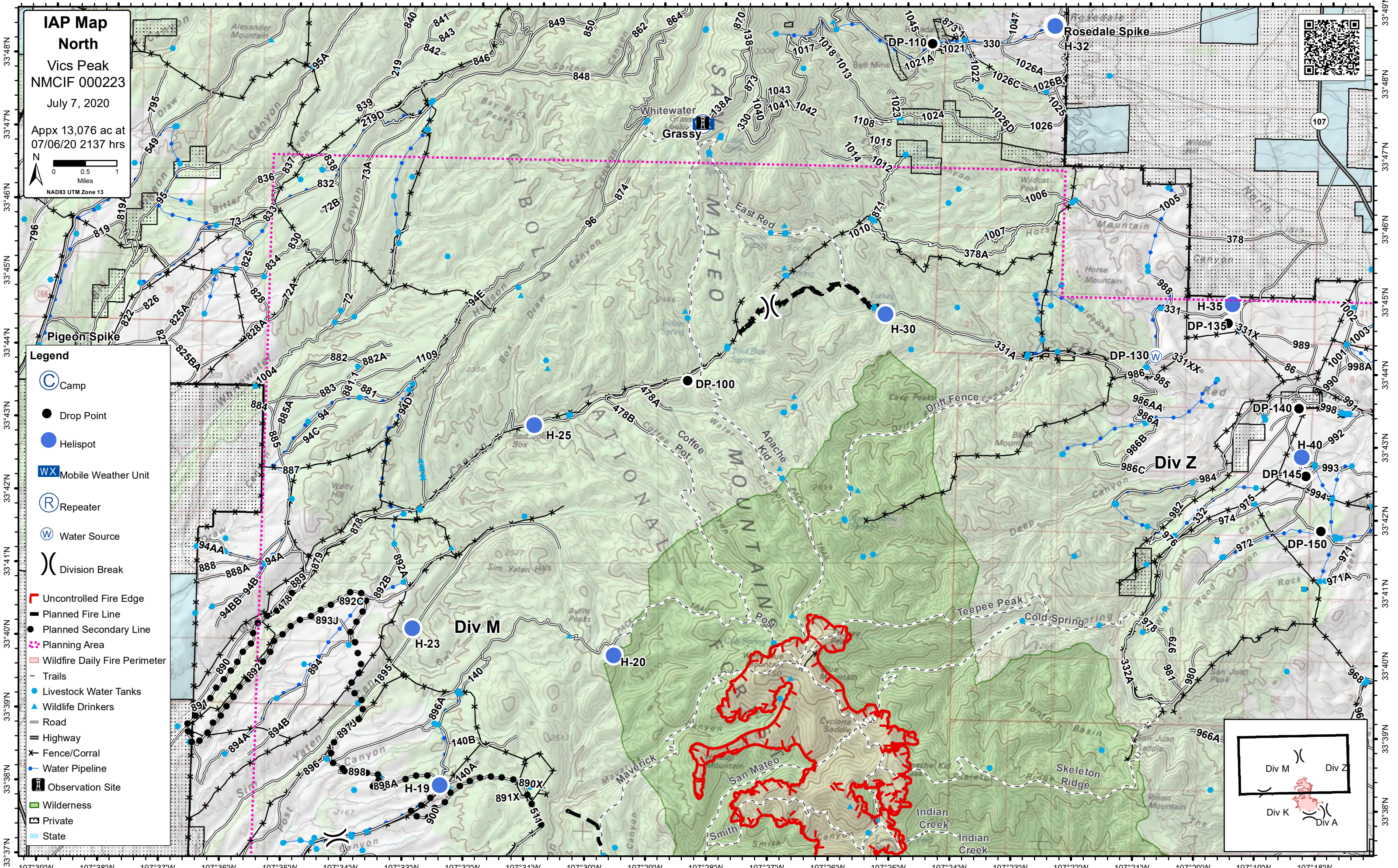
107°39'W 107°38'W 107°37'W 107°36'W 107°35'W 107°34'W 107°33'W 107°32'W 107°31'W 107°30'W 107°29'W 107°28'W 107°27'W 107°26'W 107°25'W 107°24'W 107°23'W 107°22'W 107°21'W 107°20'W 107°19'W 107°18'W

**IAP Map**  
**North**  
Vics Peak  
NMCIF 000223  
July 7, 2020

Appx 13,076 ac at  
07/06/20 2137 hrs



- Legend**
- Camp
  - Drop Point
  - Helispot
  - Mobile Weather Unit
  - Repeater
  - Water Source
  - Division Break
  - Uncontrolled Fire Edge
  - Planned Fire Line
  - Planned Secondary Line
  - Planning Area
  - Wildfire Daily Fire Perimeter
  - Trails
  - Livestock Water Tanks
  - Wildlife Drinkers
  - Road
  - Highway
  - Fence/Corral
  - Water Pipeline
  - Observation Site
  - Wilderness
  - Private
  - State



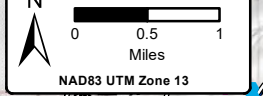
107°39'W 107°38'W 107°37'W 107°36'W 107°35'W 107°34'W 107°33'W 107°32'W 107°31'W 107°30'W 107°29'W 107°28'W 107°27'W 107°26'W 107°25'W 107°24'W 107°23'W 107°22'W 107°21'W 107°20'W 107°19'W 107°18'W

33°48'N 33°47'N 33°46'N 33°45'N 33°44'N 33°43'N 33°42'N 33°41'N 33°40'N 33°39'N 33°38'N

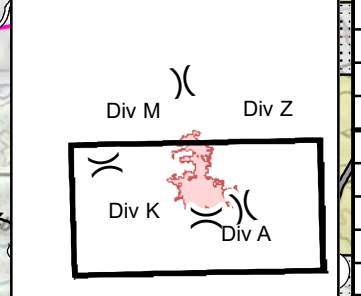
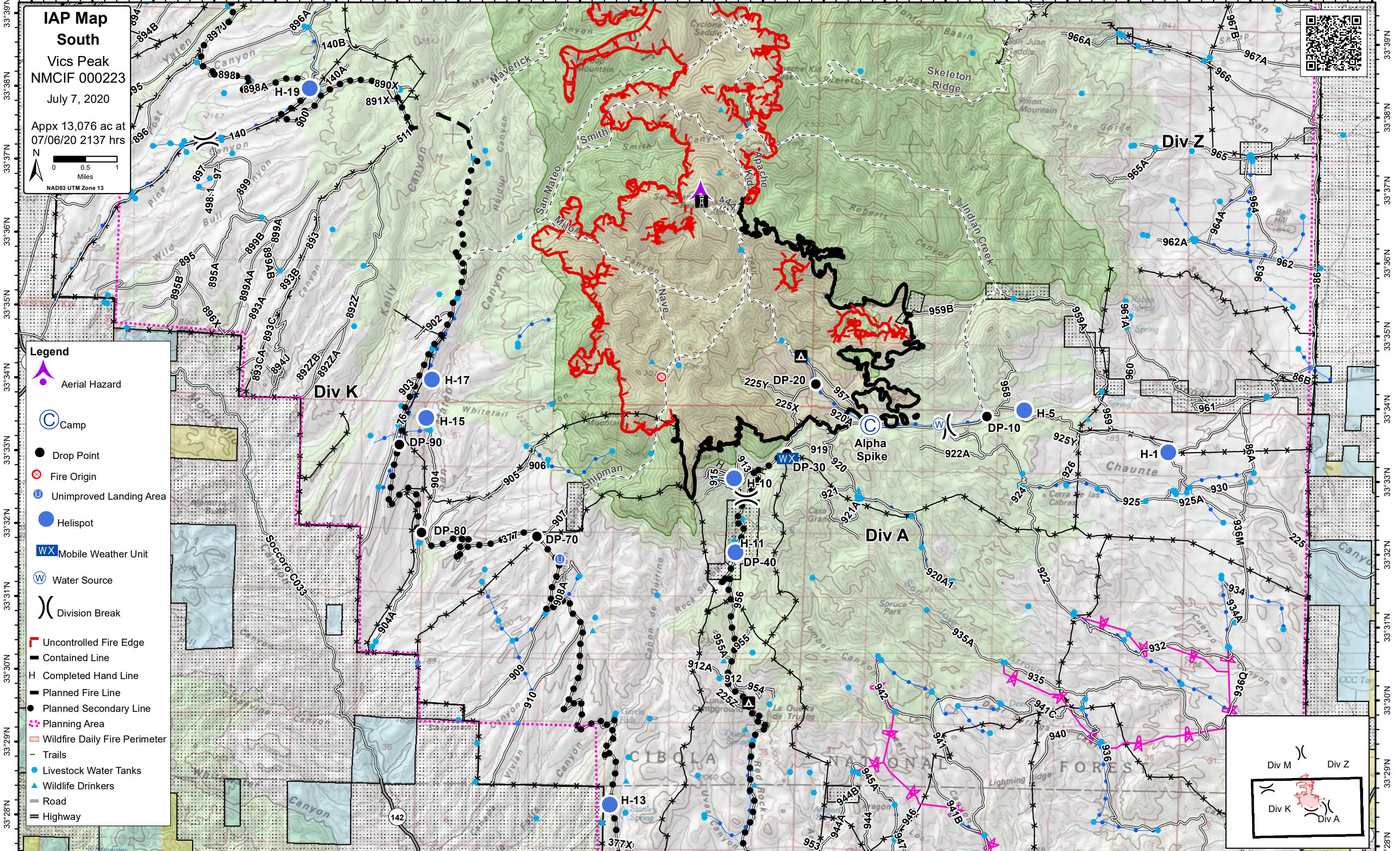
33°49'N 33°48'N 33°47'N 33°46'N 33°45'N 33°44'N 33°43'N 33°42'N 33°41'N 33°40'N 33°39'N 33°38'N

107°37'W 107°36'W 107°35'W 107°34'W 107°33'W 107°32'W 107°31'W 107°30'W 107°29'W 107°28'W 107°27'W 107°26'W 107°25'W 107°24'W 107°23'W 107°22'W 107°21'W 107°20'W 107°19'W 107°18'W 107°17'W 107°16'W 107°15'W

**IAP Map**  
**South**  
Vics Peak  
NMCIF 000223  
July 7, 2020  
Appx 13,076 ac at  
07/06/20 2137 hrs



- Legend**
- Aerial Hazard
  - Camp
  - Drop Point
  - Fire Origin
  - Unimproved Landing Area
  - Helispot
  - Mobile Weather Unit
  - Water Source
  - Division Break
  - Uncontrolled Fire Edge
  - Contained Line
  - Completed Hand Line
  - Planned Fire Line
  - Planned Secondary Line
  - Planning Area
  - Wildfire Daily Fire Perimeter
  - Trails
  - Livestock Water Tanks
  - Wildlife Drinkers
  - Road
  - Highway



107°36'W 107°35'W 107°34'W 107°33'W 107°32'W 107°31'W 107°30'W 107°29'W 107°28'W 107°27'W 107°26'W 107°25'W 107°24'W 107°23'W 107°22'W 107°21'W 107°20'W 107°19'W 107°18'W 107°17'W 107°16'W 107°15'W

33°39'N  
33°38'N  
33°37'N  
33°36'N  
33°35'N  
33°34'N  
33°33'N  
33°32'N  
33°31'N  
33°30'N  
33°29'N  
33°28'N

33°39'N  
33°38'N  
33°37'N  
33°36'N  
33°35'N  
33°34'N  
33°33'N  
33°32'N  
33°31'N  
33°30'N  
33°29'N  
33°28'N