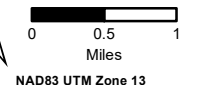


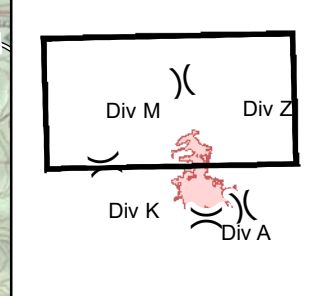
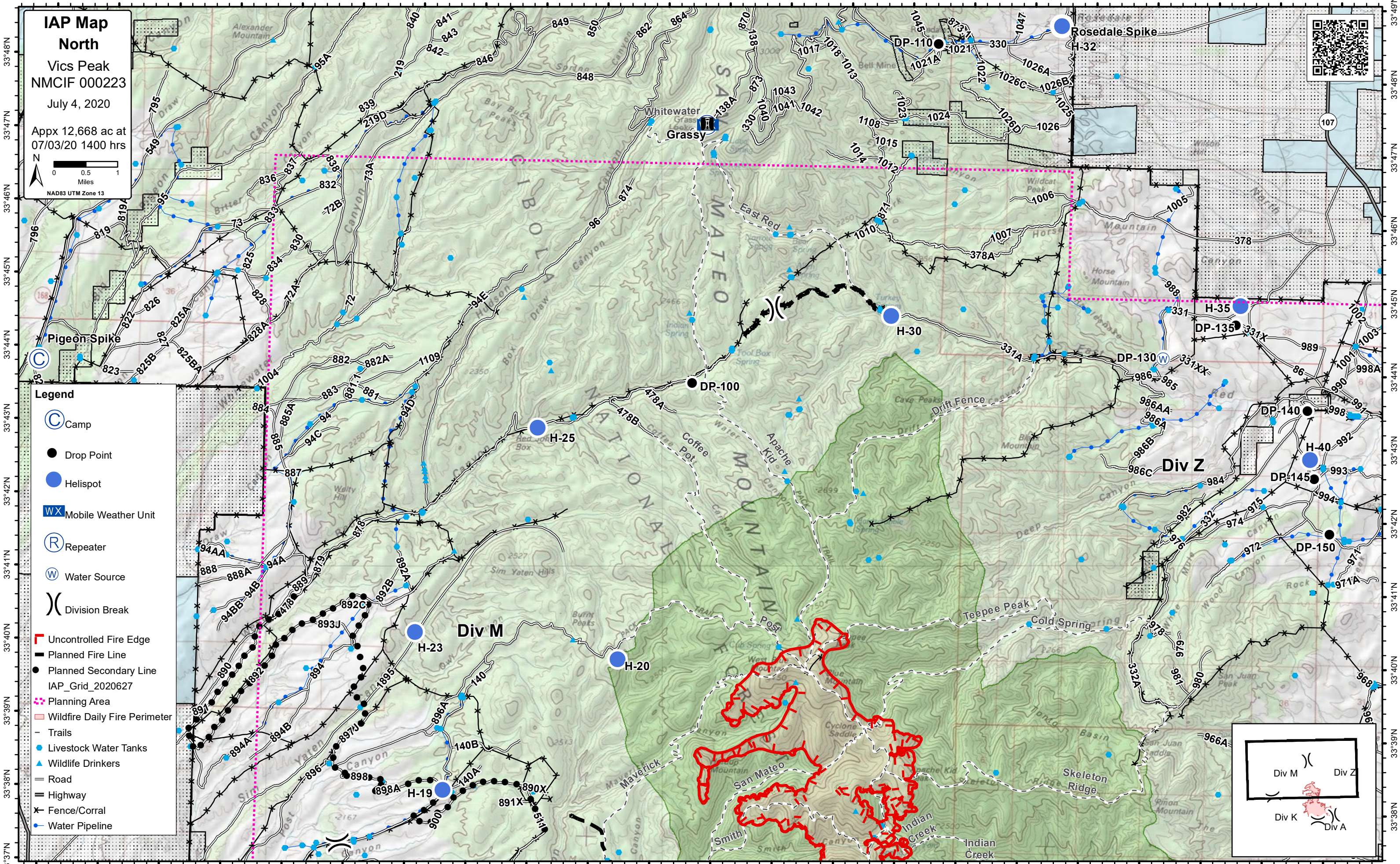
107°39'W 107°38'W 107°37'W 107°36'W 107°35'W 107°34'W 107°33'W 107°32'W 107°31'W 107°30'W 107°29'W 107°28'W 107°27'W 107°26'W 107°25'W 107°24'W 107°23'W 107°22'W 107°21'W 107°20'W 107°19'W 107°18'W

**IAP Map**  
**North**  
Vics Peak  
NMCIF 000223  
July 4, 2020

Appx 12,668 ac at  
07/03/20 1400 hrs



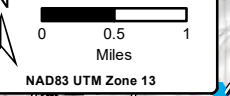
- Legend**
- Camp
  - Drop Point
  - Helispot
  - Mobile Weather Unit
  - Repeater
  - Water Source
  - Division Break
  - Uncontrolled Fire Edge
  - Planned Fire Line
  - Planned Secondary Line
  - IAP\_Grid\_2020627
  - Planning Area
  - Wildfire Daily Fire Perimeter
  - Trails
  - Livestock Water Tanks
  - Wildlife Drinkers
  - Road
  - Highway
  - Fence/Corral
  - Water Pipeline



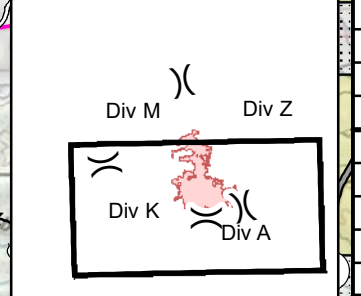
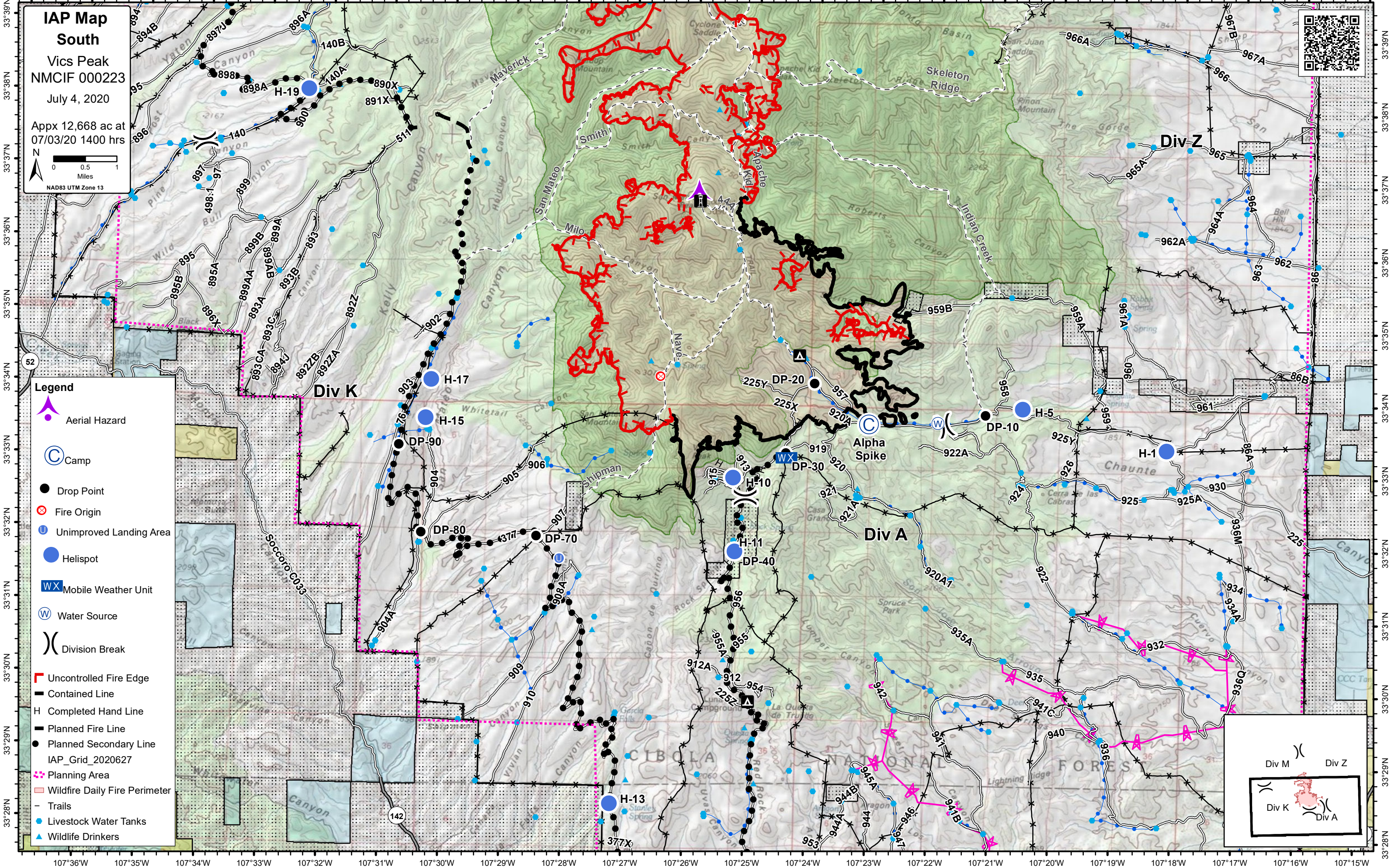
107°39'W 107°38'W 107°37'W 107°36'W 107°35'W 107°34'W 107°33'W 107°32'W 107°31'W 107°30'W 107°29'W 107°28'W 107°27'W 107°26'W 107°25'W 107°24'W 107°23'W 107°22'W 107°21'W 107°20'W 107°19'W 107°18'W

107°37'W 107°36'W 107°35'W 107°34'W 107°33'W 107°32'W 107°31'W 107°30'W 107°29'W 107°28'W 107°27'W 107°26'W 107°25'W 107°24'W 107°23'W 107°22'W 107°21'W 107°20'W 107°19'W 107°18'W 107°17'W 107°16'W 107°15'W

**IAP Map**  
**South**  
Vics Peak  
NMCIF 000223  
July 4, 2020  
Appx 12,668 ac at  
07/03/20 1400 hrs



- Legend**
- Aerial Hazard
  - Camp
  - Drop Point
  - Fire Origin
  - Unimproved Landing Area
  - Helispot
  - Mobile Weather Unit
  - Water Source
  - Division Break
  - Uncontrolled Fire Edge
  - Contained Line
  - Completed Hand Line
  - Planned Fire Line
  - Planned Secondary Line
  - IAP\_Grid\_2020627
  - Planning Area
  - Wildfire Daily Fire Perimeter
  - Trails
  - Livestock Water Tanks
  - Wildlife Drinkers



107°36'W 107°35'W 107°34'W 107°33'W 107°32'W 107°31'W 107°30'W 107°29'W 107°28'W 107°27'W 107°26'W 107°25'W 107°24'W 107°23'W 107°22'W 107°21'W 107°20'W 107°19'W 107°18'W 107°17'W 107°16'W 107°15'W

33°39'N 33°38'N 33°37'N 33°36'N 33°35'N 33°34'N 33°33'N 33°32'N 33°31'N 33°30'N 33°29'N 33°28'N

33°39'N 33°38'N 33°37'N 33°36'N 33°35'N 33°34'N 33°33'N 33°32'N 33°31'N 33°30'N 33°29'N 33°28'N