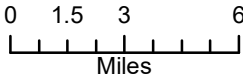


Vics Peak NMCIF 000223

Transportation Map
June 30, 2020



To Magdalena
(30 miles from
FS Rd 549
to US-60)

To Magdalena
(23 miles from
FS Rd 330)

To Socorro
(19 miles
from FS Rd 330
to I-25)

I-25 Exit 115
to NM-1

Legend

⊙ Spike Camp

● Drop Point

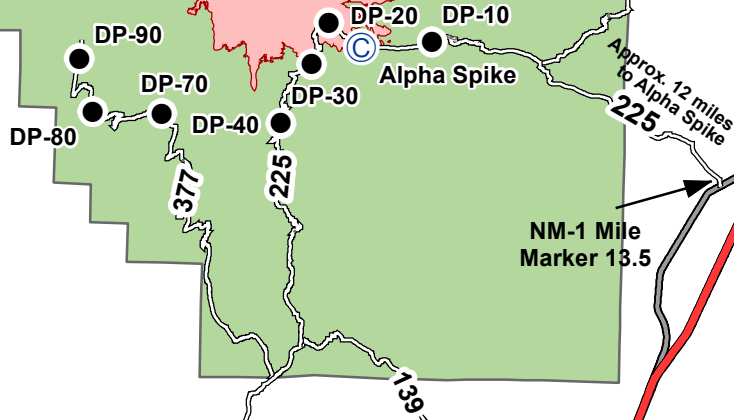
— Forest Road

— Highway

— Interstate

■ Fire Perimeter

■ Forest Service Boundary



NM-1 Mile
Marker 13.5

Approx. 12 miles
to Alpha Spike